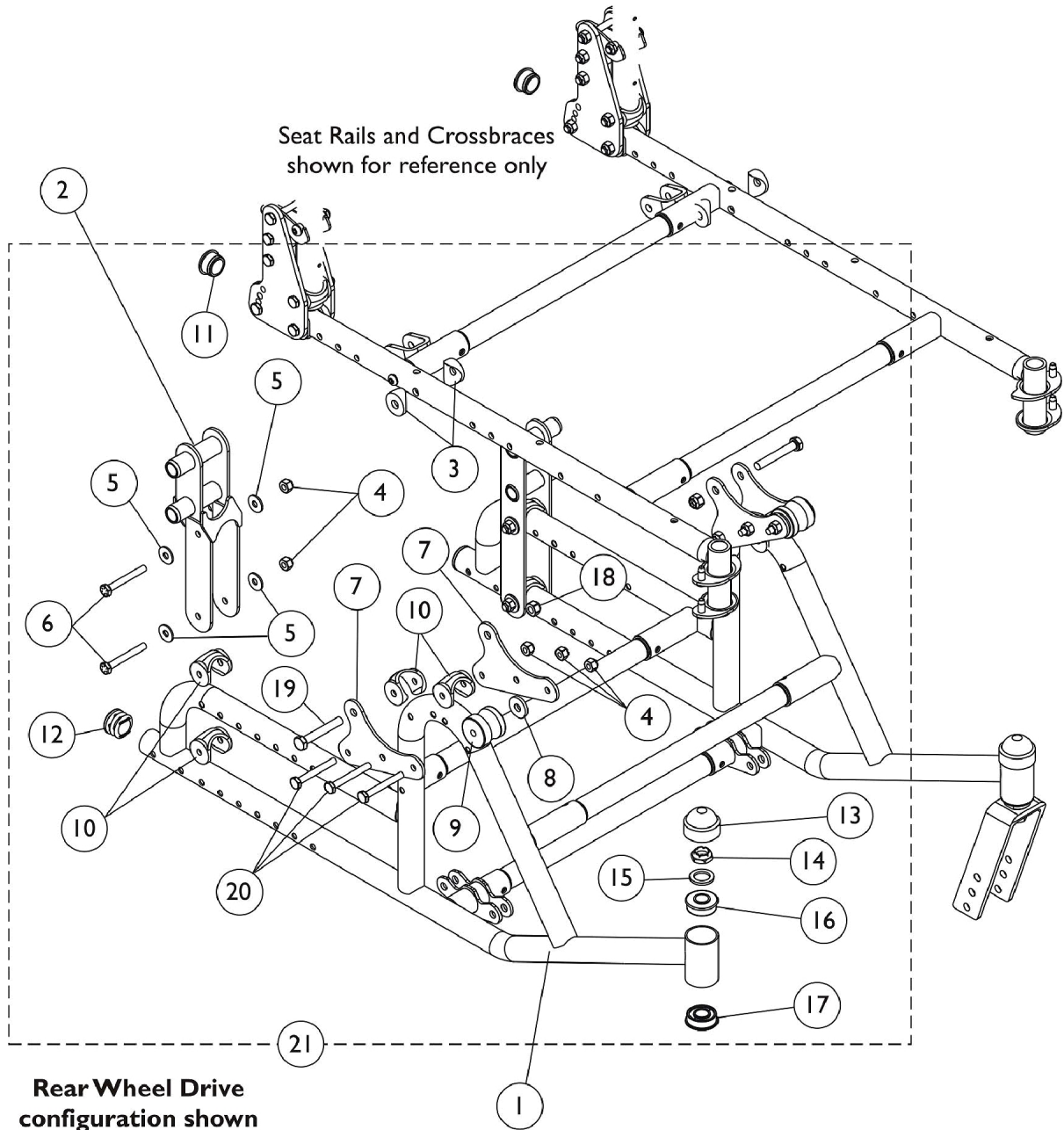


Frames and Frame Hardware

NOTE: If the chair is set up for a **FRONT WHEEL CONFIGURATION** and they need a right side frame, they should order the left side frame, if they need a left side frame, they should order the right side.



Frames and Frame Hardware

NOTE: If the chair is set up for a FRONT WHEEL CONFIGURATION and they need a right side frame, they should order the left side frame, if they need a left side frame, they should order the right side.

Item Number	Note	Part Number	Description	Quantity Per	
				Package	Assembly
1	A,F,G	8881121602	Frame w/ Headtube Bearings, Color - Right	1	1
1	A,F,G	8881121603	Frame w/ Headtube Bearings, Color - Left	1	1
2	B,D,E	1121625	Plate, Rear Axle (Offset)	1	2
3		1016263	Spacer, Coved (3/4 x 1 x 1/2")	1	4
4		1065362	Locknut (1/4-28)	1	10
5		1026900	Washer (1/4 x 23/32 x 1/16")	1	8
6		1114099	NLA - Screw, Hex Head (1/4-28 x 2")	1	4
7		1121619-NLA	NLA - Plate, Tilt Angle	1	4
8		1016301	Washer, Nylon (5/16 x 7/8 x 1/8")	1	2
9		1048801	Block, Stop	1	2
10		1118469	Uni-Washer, Coved	1	8
11		1056328	Plug Button, Black (1")	1	2
12		1029501	Plug Button, Black (1")	1	2
13		1001843	Cap, Head Tube, Black	1	2
14		1001979	Locknut (1/2-20)	1	2
15		1021508	Washer, Nylon (5/8 x 1 x 3/32")	1	2
16		1001801	Bearing, Flange (1/2")	1	2
17		1085298	Bearing (1-1/4" O.D. x 1/2" I.D.)	1	2
18		1026906-NLA	NLA - Locknut (5/16-24)	1	2
19		1031891	Screw, Hex Head (5/16-24 x 2")	1	2
20	1055349	Screw, Hex Head (1/4-28 x 2")	1	6	
21	C	1121580	Kit, Frame Hardware (Both Frames)	2	1
13		1131189	Package, Head Tube Cap	10	2

NOTE: A - Frame includes Headtube Bearings (items 16 and 17)
 B - Item 2, Rear Axle Plate, is Not included in Frame Hardware Kit.
 C - Includes items 3-20
 D - Due to design change, Rear Axle Plate (1121625) must be replaced in pairs on chairs built Before 2/1/04. Previous Axle Plate is NLA.
 E - Use with 20", 22", & 24" Wheels (SPT chairs)
 F - Specify frame finish when ordering
 G - If the chair is set up for a FRONT WHEEL CONFIGURATION and they need a right side frame, they should order the left side frame, if they need a left side frame, they should order the right side.

NOTE: If the chair is set up for a FRONT WHEEL CONFIGURATION and they need a right side frame, they should order the left side frame, if they need a left side frame, they should order the right side.