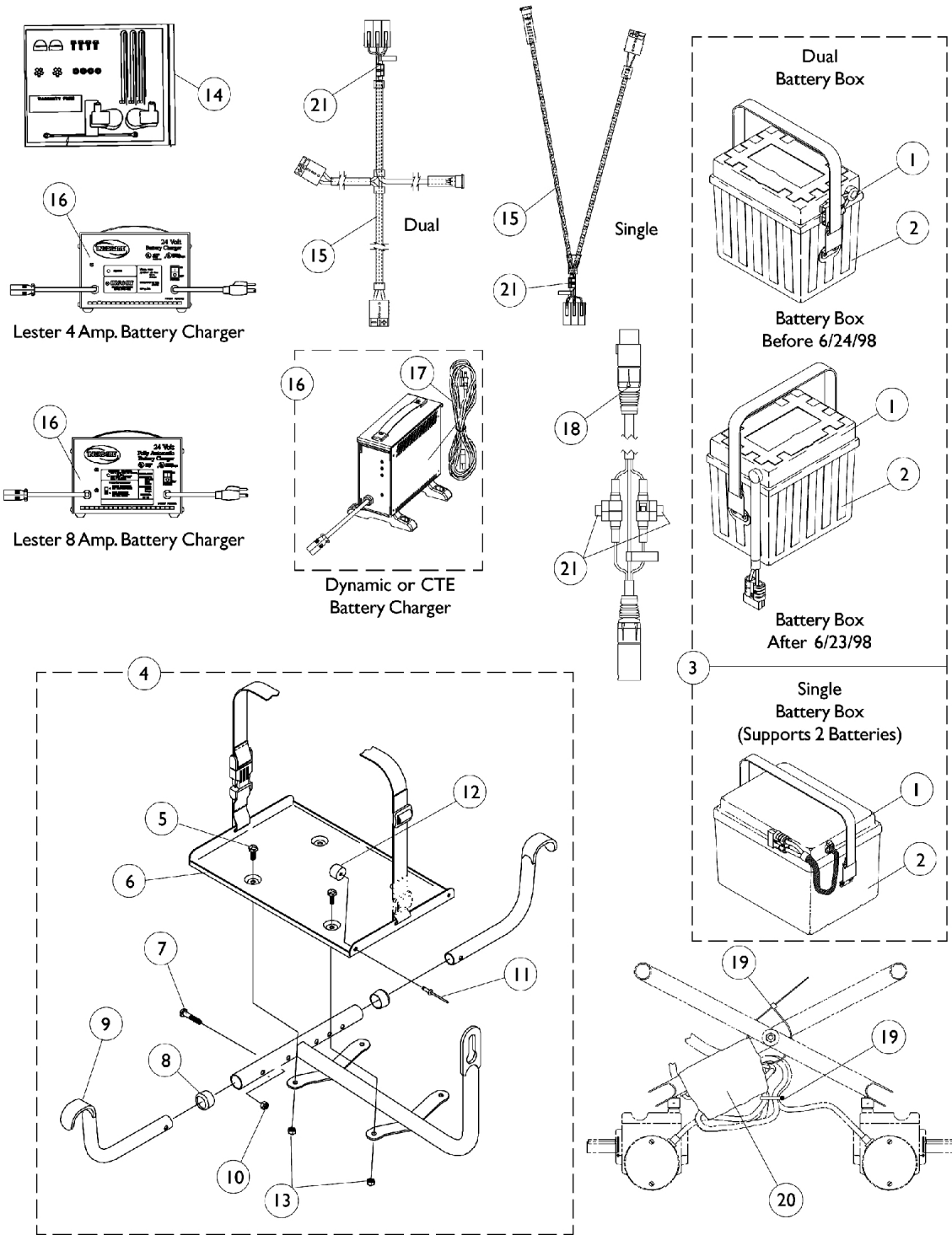


Battery Boxes - Chargers - Harnesses - Trays



Battery Boxes - Chargers - Harnesses - Trays

Item Number	Note	Part Number	Description	Quantity Per	
				Package	Assembly
1	B,B1,E	1060462-NLA	NLA - Battery Box Top Assembly, Single	1	1
1	B,B1,E, F	1037275-NLA	NLA - Battery Box Top Assembly, Dual w/ Single Fixed Connector	1	2
1	B,B1,E, G	1057941-NLA	NLA - Battery Box Top Assembly, Dual w/ Single Extended Connector, UI	1	2
2		1060460-NLA	NLA - Battery Box Bottom, Single	1	1
2		1009268-NLA	NLA - Battery Box Bottom Assembly, U1	1	2
3		1061509-NLA	NLA - Battery Box Assembly, Single, Supports 2 Batteries	1	1
3	F	1061510-NLA	NLA - Battery Box Assembly, Dual w/ Single Fixed Connector	1	2
3	G	1057942-NLA	NLA - Battery Box Assembly, Dual w/ Single Extended Connector, UI	1	2
4		1060451	Battery Tray Assembly, Single	1	1
4		1061158	Battery Tray Assembly, Dual	1	1
5		1025752-NLA	NLA - Screw, Hex Head (1/4-20 x 1-1/2")	1	4
6		1037270-NLA	NLA - Tray with Buckle {Single and Dual}	1	1
7		1021406	Screw, Hex Head (1/4-20 x 1-1/4")	1	2
8		15680X012	Collar, Anti-Rattle (7/8")	1	2
9		1038220-NLA	NLA - Bracket, Tray Hanger, Black	25	2
10		7930333	Locknut (1/4-20)	1	1
11		1007094-NLA	NLA - Rivet, Pop (3/16") (UI Battery Boxes Only)	1	2
12		1016025-NLA	NLA - Bumper, Rubber (UI Battery Boxes Only)	25	2
13		7930323-NLA	NLA - Package, Locknut (1/4-20)	1	1
14		1097005-NLA	NLA - Jumper Cable Hardware Kit	1	1
15		1060464-NLA	NLA - Harness, Wire, Single	1	1
15		1067404	Harness, Wire, Dual	1	1
16	C,O	1053161-NLA	NLA - Charger, Battery, 8 Amp, 115vac, Off Board Dual Mode Round Plug, Lester	1	1
16		1085678-NLA	NLA - Charger, Battery, 8 Amp. 115vac, Off Board, Dual Mode, Round Plug w/ AC Power Line Cord, Dynamic	1	1
16	L	1061411-NLA	NLA - Charger, Battery, 4 Amp. 115vac, Off Board, Dual Mode, Round Plug, Lester	1	1
16	M,M1	1123249	Charger, Battery, 8 Amp. 115vac (Off Board) Single Mode Round Plug w/ AC Power Line Cord	1	1
16	M,M1	1123249E-NLA	NLA - WARR RPLMT - Charger, Battery, 8 Amp, 115VAC (Off Board) Single Mode Round Plug w/ AC Power Line Cord	1	1
17	N	1089627-NLA	NLA - Cord, AC Power, 115VAC, 2 Prong Off-Board (11' 6" L)	1	1
17		1121086	Cord, AC Power, 115VAC, 3 Prong On-Board (6' 6-1/2" L)	1	1
18		1083929-NLA	NLA - Cable, Charger Extension, Round Plug (24" L)	1	1
19		1095502-NLA	NLA - Package, Tie Wrap (11-1/2" L)	10	1
20		1058491-NLA	NLA - Connector Boot, Wire	1	1
21	J	1098892-NLA	NLA - Fuse - Buss ATC-15 (15 AMP)	1	1
21	K	1090117-NLA	NLA - Fuse - Buss Mini ATM-15 (15 AMP)	1	2

Battery Boxes - Chargers - Harnesses - Trays

Item Number	Note	Part Number	Description	Quantity Per	
				Package	Assembly
	A,B,B1, H	50000X166-NLA	NLA - Fuse - Buss 2-1/4" L (60 AMP)	1	2
	A,I	1089385	Fuse, MIDI (Non-G/B & G/B) (80 AMP)	1	1
	A,D	1060454-NLA	NLA - Hardware, Terminal, U1 Batteries	2	1
NOTE: A - Not Shown B - Battery harness fuse changed from a Bussman 60 Amp. to a MIDI 80 Amp. fuse as of 11/5/99 for Dual Battery Boxes and 11/10/00 for the Single Battery Box. B1 - The current battery box top assemblies are compatible for all chairs manufactured before the dates specified and must be ordered when a replacement Bussman 60 amp. fuse is requested. C - On 7/18/01 Lester 8 battery charger was reinstated. D - Hardware includes small battery terminal caps (gray and orange), 1/4-20 x 7/8" hex flange screws and instruction sheet for two batteries. E - It is recommended that new terminal hardware be ordered when a new battery box top is ordered. F - Before 6/24/98 G - After 6/23/98 H - Before 11/5/99 for dual battery box and Before 11/10/00 for Single battery box I - After 11/4/99 for dual battery box and After 11/9/00 for single battery box J - Before 4/1/03. Charger extension cable takes 1 fuse and the wire harness takes 2 fuses K - After 3/31/03. Charger extension cable takes 2 fuses and the wire harness takes 2 fuses L - The 4 amp. Lester charger was obsoleted and replaced with the 8 amp. CTE charger. For wet cell batteries, use the 8 amp. dual mode Lester charger. M - CTE charger introduced 4/1/04. Used on Gel Cell or AGM (Absorbed Glass Mat) batteries. For wet cell batteries refer to the 8 amp. Lester charger. M1 - CTE charger looks exactly the same as Dynamic's charger except for the company name that is silk screened on the narrow side panel, where the charger plug is (hard wired) attached. Serial number starts with 04A00000001. N - No longer available as a service part. Please use 1121086 as its replacement. O - Use Battery Charger part number 1123249 as a replacement.					