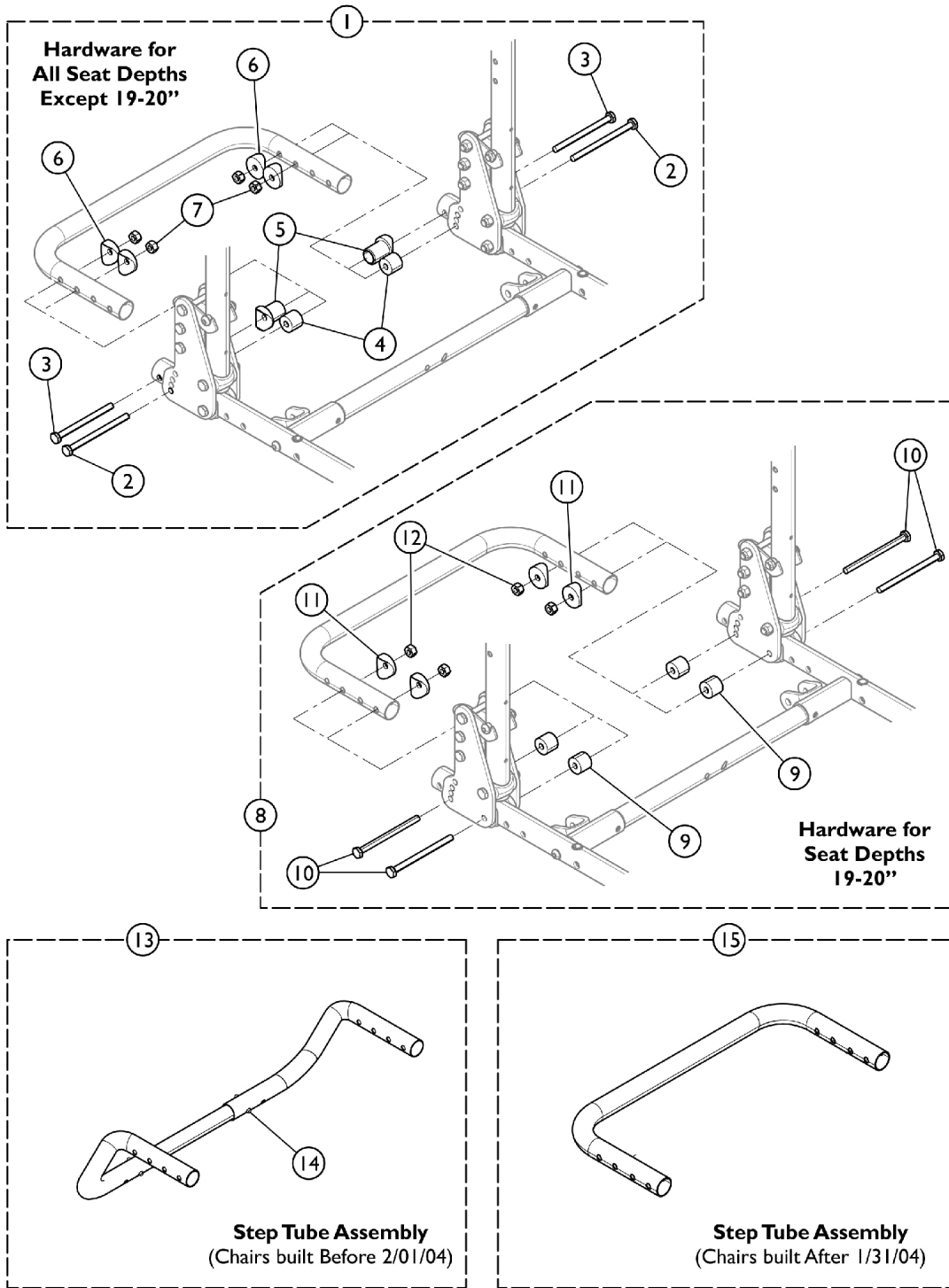


Adult Tilt Foot Assist Option (ATFA)



Adult Tilt Foot Assist Option (ATFA)

Item Number	Note	Part Number	Description	Quantity Per	
				Package	Assembly
1	A	1064330	Hardware, Mounting, Adult Tilt Foot Assist	1	1
2		1064329-NLA	NLA - Screw, Hex Head (1/4-28 x 3-1/2")	1	2
3		1063208-NLA	NLA - Screw, Hex Head (1/4-28 x 3-1/4")	1	2
4		1064328-NLA	NLA - Spacer, Nylon (1/4 x 3/4 x 5/8")	1	2
5		1017148	Pivot, Footrest	1	2
6		40157X020	Spacer, Coved (1/4 x 1 x 9/16")	1	4
7		1055366	Locknut (1/4-28)	1	4
8	B,I	1192813	Hardware, Mounting, Adult Tilt Foot Assist (19-20")	1	1
9			NLA - Spacer, Nylon (1/4 x 3/4 x 5/8")	1	4
10			NLA - Screw, Hex Head (1/4-28 x 3-1/2")	1	4
11			Spacer, Coved (1/4 x 1 x 9/16")	1	4
12			Locknut (1/4-28)	1	4
			NLA - Instruction Sheet, Tilt Foot Assist	1	4
13	A,C,G	1064070-NLA	NLA - Step Tube Assembly, Black (15 - 17" W)	1	1
13	D,F,G	1064069-NLA	NLA - Step Tube Assembly, Black (18 - 20" W)	1	1
13	E,F,G	1064068-NLA	NLA - Step Tube Assembly, Black (21 - 22" W)	1	1
14	G	1025763	Spring, Torsion with Double Button	1	1
15	H	See Chart	Step Tube Assembly (After 1/31/04)	1	1
		1064591-NLA	NLA - Instruction Sheet, Tilt Foot Assist	1	1

NOTE: A - Includes items 2 - 7.
 B - Includes items 9 - 12.
 C - 15 - 17" Wide Chairs only.
 D - 18 - 20" Wide Chairs only.
 E - 21 - 22" Wide Chairs only.
 F - Step Tube Assembly does not include hardware, see 1064330 to attach ATFA option.
 G - Chairs manufactured before 02/01/04.
 H - Chairs manufactured after 01/31/04. See Step Tube Assembly Chart below.
 I - Use with 19 - 20" Seat Depth Chairs only.

#15 Step Tube Assembly (After 1/31/04)

Chair Width	Part Number
14"	1124007-NLA
15"	1124008-NLA
16"	1124009-NLA
17"	1124010-NLA
18"	1124011-NLA
19"	1124012-NLA
20"	1124013-NLA
21"	1124014-NLA
22"	1124015-NLA