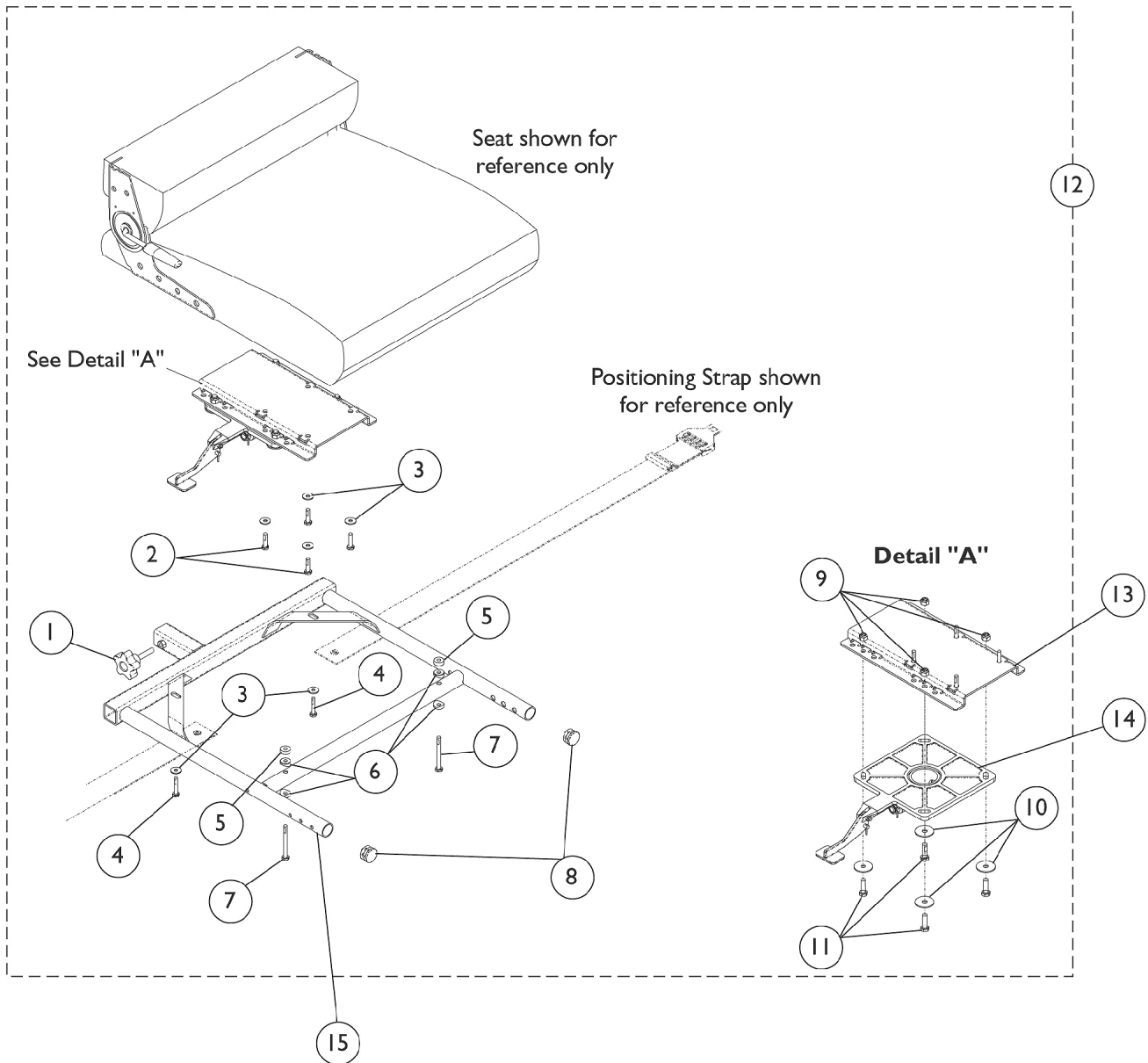


Van Seat Frame and Mounting Hardware

After 7/13/03

If converting a wheelchair from a Semi-Recline Van Seat w/ Cushion to a Semi-Recline Van Seat w/ Solid Seat Base, a new Seat Mounting Bracket item #13 part number 1129722 is required also.



Van Seat Frame and Mounting Hardware

After 7/13/03

If converting a wheelchair from a Semi-Recline Van Seat w/ Cushion to a Semi-Recline Van Seat w/ Solid Seat Base, a new Seat Mounting Bracket item #13 part number 1129722 is required also.

Item Number	Note	Part Number	Description	Quantity Per	
				Package	Assembly
12	A,B	1119577	Kit, Van Seat Mounting Hardware	1	1
1			NLA - Knob, Adjustment, Black (5/16-18 x 1-1/2")	1	1
2			NLA - Screw, Hex Head Cap w/ Patch (1/4-20 x 1")	1	4
3			Washer (1/4 x 23/32 x 1/16")	1	6
4			NLA - Screw, Hex Head w/ Patch (1/4-20 x 1-1/4")	1	2
5			Spacer (1/4 x 5/8 x 1/4")	1	2
6			Spacer, Coved (1/4 x 11/16 x 1/2")	1	4
7			NLA - Screw, Hex Head w/Patch (1/4-20 x 2-1/2")	1	2
8			Plug Button, Black (1")	1	2
9			Locknut (5/16-18)	1	4
10			Washer, Steel (5/16 x 1-1/4 x 1/16")	1	4
11			Screw, Hex Head w/ Patch (5/16-18 x 1")	1	4
13	C	1116919	Bracket, Seat Mounting, Black	1	1
13	D	1129722	Bracket, Seat Mounting, Black	1	1
14		1116413-NLA	NLA - Pivot, Seat	1	1
15		1123391	Frame, Van Seat, Black (16" W)	1	1
15		1116392	Frame, Van Seat, Black (18" W)	1	1
15		1116393	Frame, Van Seat, Black (20" W)	1	1
NOTE: A - Item 8, Plug Buttons, are only used in the absence of front riggings. B - Includes items 1-11 C - Van Seats without Solid Seat Base D - Van Seats with Solid Seat Base					