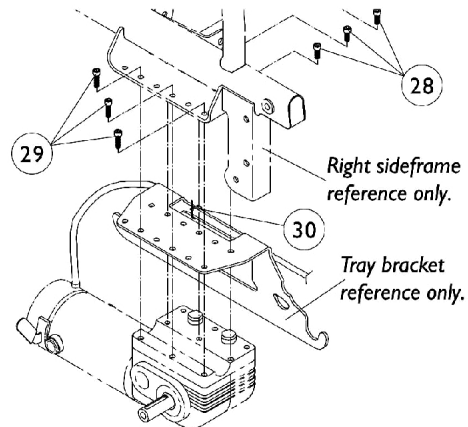
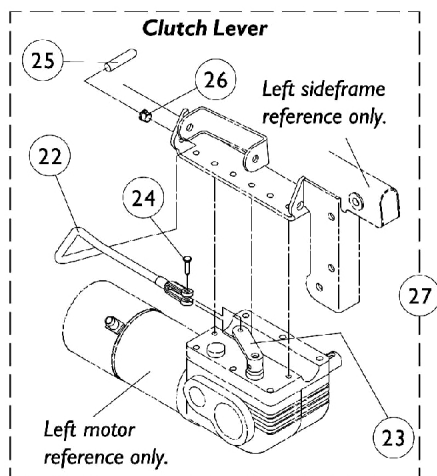
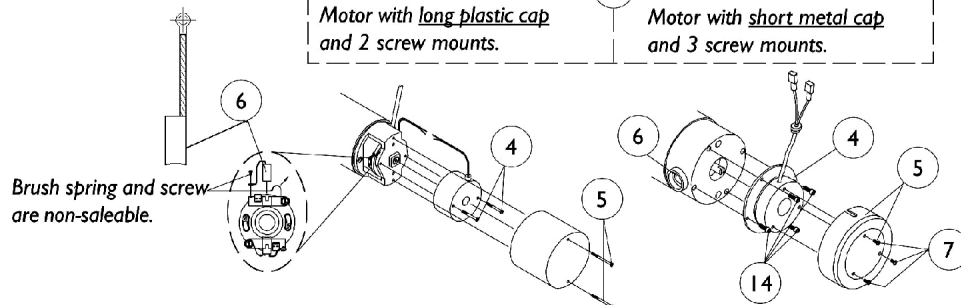
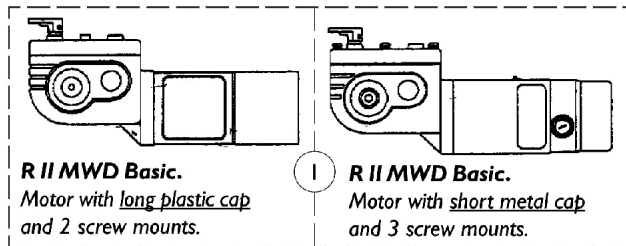
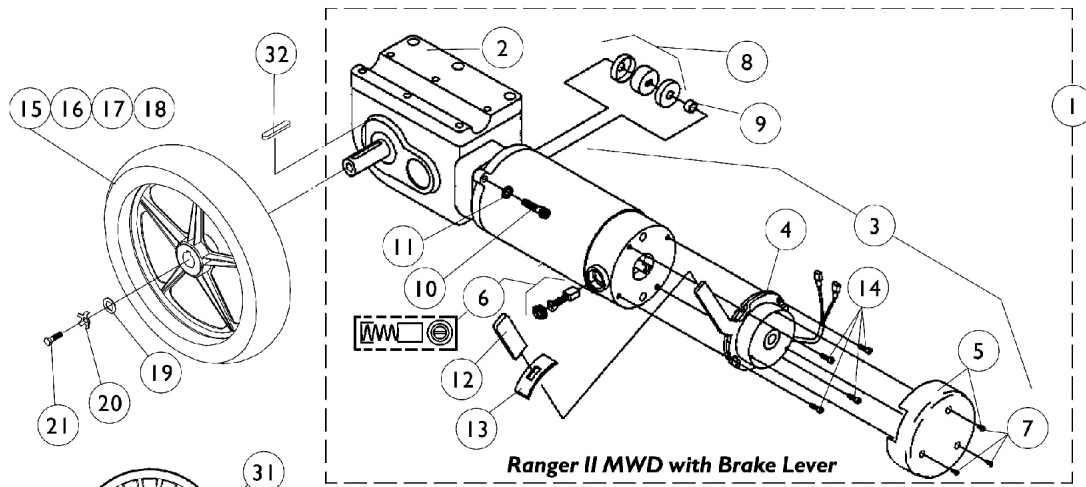


Motor, 2-Pole, Gearboxes and 12" Drive Wheel



Motor, 2-Pole, Gearboxes and 12" Drive Wheel

Drive Wheel, 2 Pole Motor and Gearboxes - (Items 1-5)

Item Number	Description	Ranger II MWD and W.S.T. w/Brake Lever (Before 3/15/99) - Right	Ranger II MWD and W.S.T. w/Brake Lever (Before 3/15/99) - Left	Ranger II MWD Basic (Long Cap) - Right	Ranger II MWD Basic (Long Cap) - Left	Ranger II MWD Basic (Short Cap) - Right	Ranger II MWD Basic (Short Cap) - Left
1	Motor/ Gearbox	1057907-NLA	1057906-NLA	1071593-NLA	1071594-NLA	1071595-NLA See Note(s) B	1071596-NLA See Note(s) B
2	Gear Box	1056733-NLA	1056732-NLA	N/A	N/A	N/A	N/A
3	Motor Assembly	1070162-NLA	1070161-NLA	N/A	N/A	N/A	N/A
3	WARR RPLMT - Motor Assembly	1070162E-NLA A	1070161E-NLA A	N/A	N/A	N/A	N/A
4	Brake Repair Kit	1056735-NLA	1056734-NLA	1055872-NLA	1055872-NLA	1057827-NLA	1057827-NLA
5	Brake Cover w/Screws	1060996	1056736-NLA	1038361-NLA See Note(s) A	1038361-NLA See Note(s) A	1057826	1057826

NOTE: A - Sold in pairs only

B - No Longer Available. Order the long cap Motor/ Gearbox Assembly part numbers 1071593 and 1071594 in pairs.

NOTE: Light Duty, 250-S models use long cap motors.

NOTE: See page for 4-Pole Motors with brake levers for chairs made after 3/14/99.

NOTE: MWD-R motor/gearbox is also used as a RWD-L motor/gearbox and MWD-L motor/gearbox is used as a RWD-R. The part numbers are already switched around respectively for this MWD page.

Drive Wheel, 2 Pole Motor and Gearboxes - (Items 6-32)

Item Number	Description	Ranger II MWD W.S.T. w/Brake Lever (Before 3/15/99)	Ranger II MWD Basic (Long Cap)	Ranger II MWD Basic (Short)
6	Brush w/Cap (Pair)	1064336-NLA	561-005-NLA See Note(s) H	1044044-NLA
7	Screw, Phillips Pan Head (4-40 x 1/4")	1050305-NLA	N/A	1050305-NLA
8	NLA - Coupling w/ Cup (1" Diameter)	5165204-NLA See Note(s) F	N/A	N/A
8	NLA - Coupling w/ Cup (1-5/16" Diameter)	50000X007-NLA See Note(s) G	N/A	N/A
9	Spacer (5/16 x 7/16 x 7/32")	50000X341-NLA See Note(s) A	N/A	N/A
10	Screw, Socket Head (1/4-20 x 1-1/8")	1043594	N/A	N/A
11	Lockwasher	10502X001-NLA	N/A	N/A
12	Tip, Protective	1006490	N/A	N/A

Motor, 2-Pole, Gearboxes and 12" Drive Wheel

Drive Wheel, 2 Pole Motor and Gearboxes - (Items 6-32)

Item Number	Description	Ranger II MWD W.S.T. w/Brake Lever (Before 3/15/99)	Ranger II MWD Basic (Long Cap)	Ranger II MWD Basic (Short)
13	Slotted Plate	1057972-NLA	N/A	N/A
14	Screw (8-32 x 1/2")	1008498-NLA	N/A	N/A
15	Drive Wheel w/Foam Fill (12-1/2")	1064177 See Note(s) B	1064177 See Note(s) B	1064177 See Note(s) B
15	Drive Wheel Pneumatic (12-1/2")	1064178-NLA See Note(s) B	1064178-NLA See Note(s) B	1064178-NLA See Note(s) B
16	Tire (12-1/2" x 2-1/4")	1011524	1011524	1011524
17	Flat Free Insert	1073936-NLA See Note(s) C	1073936-NLA See Note(s) C	1073936-NLA See Note(s) C
18	Tube (12-1/2" x 2-1/4")	1011525	1011525	1011525
19	Washer (11/32 x 13/16 x 1/8")	1023262-NLA	1023262-NLA	1023262-NLA
20	Washer Locking Tab (Pair)	1064179	1064179	1064179
21	Screw (Pkg) (M8 x 1-1/4 x 20MM)	7930322-NLA	7930322-NLA	7930322-NLA
22	Clutch Lever -Right	N/A	1098712-NLA See Note(s) E	1098712-NLA See Note(s) E
22	Clutch Lever -Left	N/A	1098713-NLA See Note(s) E	1098713-NLA See Note(s) E
23	Bracket, Clutch Lever	N/A	1071567-NLA	1071567-NLA
24	Pin, Clevis	N/A	1071568	1071568
25	Tip, Protective	N/A	1040060	1040060
26	Bushing, Snap	N/A	1071562-NLA	1071562-NLA
27	Clutch Lever Assembly -Right	N/A	1074114-NLA	1074114-NLA
27	Clutch Lever Assembly -Left	N/A	1074135-NLA	1074135-NLA
28	Screw, Socket Head (M6 x 20MM)	1071505	1071505 See Note(s) D	1071505 See Note(s) D
29	Screw, Socket Head (M6 x 35MM)	1071504-NLA See Note(s) D	1071504-NLA	1071504-NLA
30	Cable Tie (5-5/8" Long)	1021260	1021260	1021260
31	Shroud Cover, Black Drive Wheel	1074974-NLA	1074974-NLA	1074974-NLA
32	Key	1023264	1023264	1023264

Motor, 2-Pole, Gearboxes and 12" Drive Wheel

NOTE: A - Spacer not needed after 6/30/98
B - Drive Wheel comes with a locking tab and instruction sheet
C - As of 10/20/99 the "Solid" Flat Free Insert was replaced with a "Foam Fill" process. When a Flat Free Insert is requested, a complete wheel must be ordered
D - Weight Shifting Tilt takes a quantity of 2 per side for item 29
E - Short end of clutch lever was lengthened from 2" to 2-3/4" long as of 12/11/00. Replace in pairs for chairs made before 12/11/00

F - Coupling with Cup for chairs manufactured before 11/12/01 - Use part # 50000X007 as a direct replacement part.
G - After 11/11/01 Coupling with Cup was resized from approximately 1" to 1-5/16" diameter and can be used as a direct replacement for part number 5165204
H - 561-005 are internal brushes and do not use Caps.