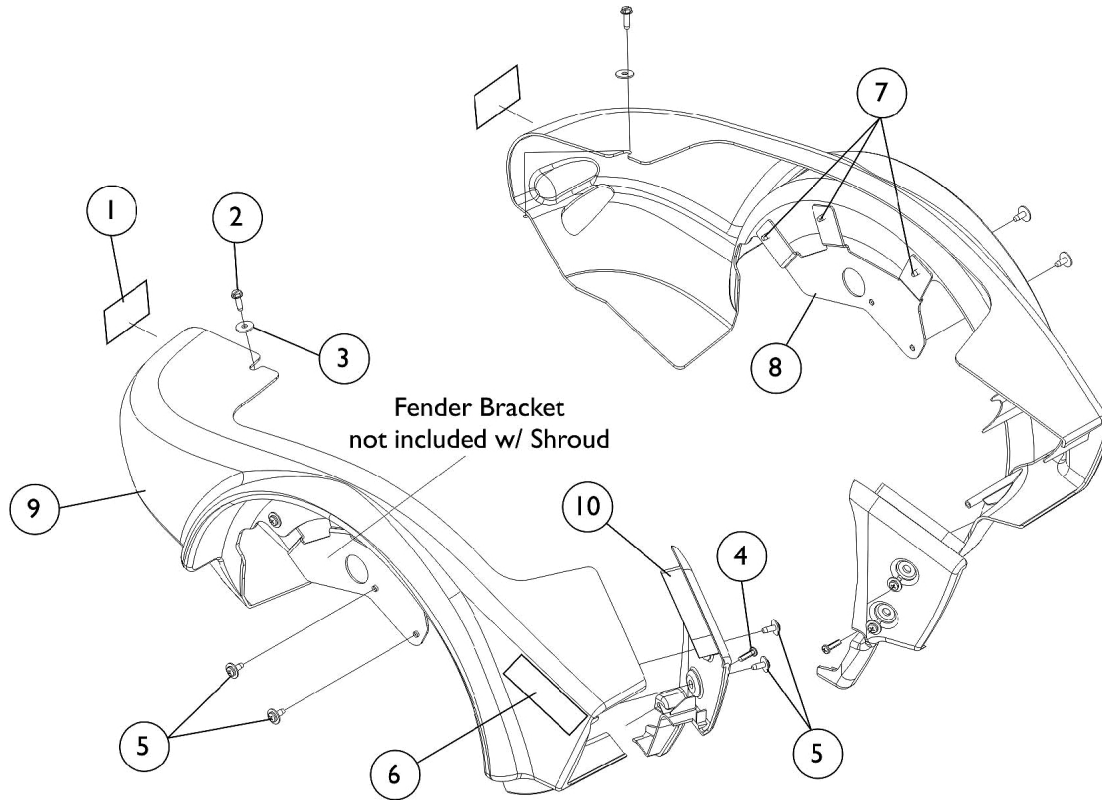


Side Shrouds and Attaching Hardware



Side Shrouds and Attaching Hardware

Item Number	Note	Part Number	Description	Quantity Per	
				Package	Assembly
1		1104797	Decal, Drive/Push	1	2
2		1025451	Screw, Slotted Hex Washer Head (#10-32 x 5/8")	1	2
3		1070587	Washer, Flat (3/16 x 5/8 x 1/16")	1	2
4		1114276	Screw, Phillips Pan Head (#8-16 x 5/8")	1	2
5		1114308	Screw, Phillips Pan Head Tap (#10-32 x 1/2")	1	8
	A	1123224	Kit, Side Shroud Hardware	2	1
6		1123358-NLA	NLA - Decal, Model - Pronto M94	1	2
7		1114308	Screw, Phillips Pan Head Tap (#10-32 x 1/2")	1	3
8		1114304-NLA	NLA - Bracket, Fender Mounting, Black - Right	1	1
8		1114305-NLA	NLA - Bracket, Fender Mounting, Black - Left	1	1
9	B,C	1124373	Shroud, Side w/ Decals, Candy Red Pearl - Right	1	1
9	B,C	1124374	Shroud, Side w/ Decals, Candy Red Pearl - Left	1	1
9	B	1124375	Shroud, Side w/ Decals, Magic Black - Right	1	1
9	B	1124376	Shroud, Side w/ Decals, Magic Black - Left	1	1
9	B	1124377	Shroud, Side w/ Decals, Dark Blue Pearl - Right	1	1
9	B	1124378	Shroud, Side w/ Decals, Dark Blue Pearl - Left	1	1
10		1110696	Shroud, Front Inner - Right	1	1
10		1110697	Shroud, Front Inner - Left	1	1

NOTE: A - Not Shown. Includes items 2-5.
 B - Includes Decals, items 1 & 6.
 C - Due to a supplier change it is recommended to order the right and left Side Shrouds to match in color shade for wheelchairs manufactured before 1/3/12.