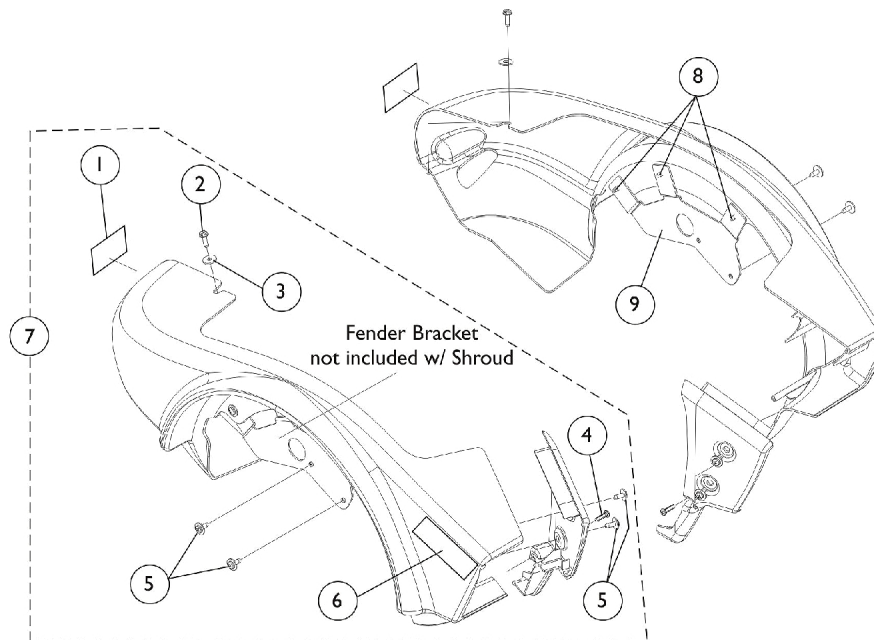
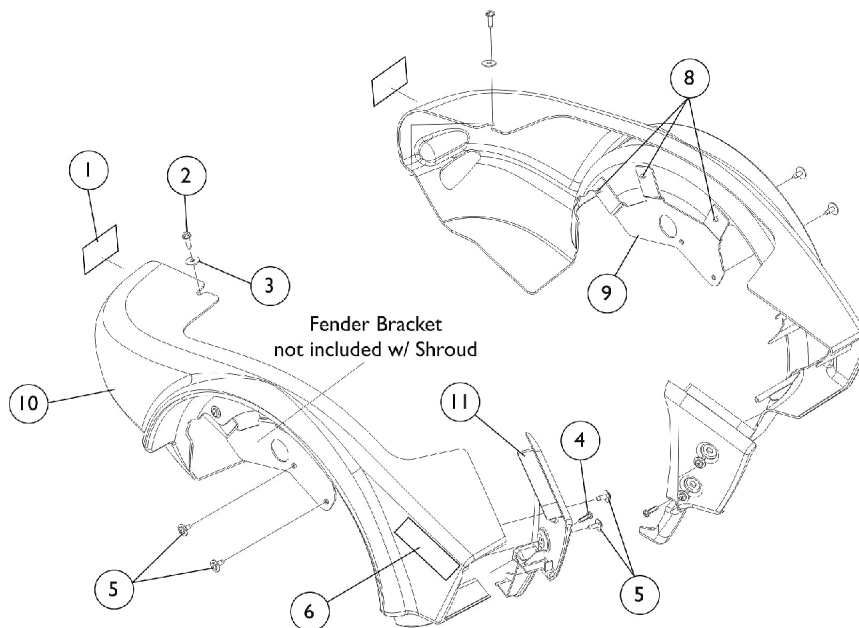


Side Shrouds and Attaching Hardware



Chairs built **Before 11/24/03**



Chairs built **After 11/23/03**

Side Shrouds and Attaching Hardware

Item Number	Note	Part Number	Description	Quantity Per	
				Package	Assembly
1		1104797	Decal, Drive/Push	1	2
2		1025451	Screw, Slotted Hex Washer Head (#10-32 x 5/8")	1	2
3		1070587	Washer, Flat (3/16 x 5/8 x 1/16")	1	2
4		1114276	Screw, Phillips Pan Head (#8-16 x 5/8")	1	2
5		1114308	Screw, Phillips Pan Head Tap (#10-32 x 1/2")	1	8
	C	1123224	Kit, Side Shroud Hardware	2	1
6		1112377-NLA	NLA - Decal, Model - Pronto M91	1	2
7	A,B	1123295	Kit, Shroud, Side, Candy Red Pearl - Right	1	1
7	A,B	1123296	Kit, Shroud, Side, Candy Red Pearl - Left	1	1
7	A,B	1123297	Kit, Shroud, Side, Magic Black - Right	1	1
7	A,B	1123298	Kit, Shroud, Side, Magic Black - Left	1	1
7	A,B	1123299	Kit, Shroud, Side, Dark Blue Pearl - Right	1	1
7	A,B	1123300	Kit, Shroud, Side, Dark Blue Pearl - Left	1	1
8		1114308	Screw, Phillips Pan Head Tap (#10-32 x 1/2")	1	3
9		1114304-NLA	NLA - Bracket, Fender Mounting, Black - Right	1	1
9		1114305-NLA	NLA - Bracket, Fender Mounting, Black - Left	1	1
10	D,E	1123093	Shroud, Side w/ Decals, Candy Red Pearl - Right	1	1
10	D,E	1123094	Shroud, Side w/ Decals, Candy Red Pearl - Left	1	1
10	D	1123095	Shroud, Side w/ Decals, Magic Black - Right	1	1
10	D	1123096	Shroud, Side w/ Decals, Magic Black - Left	1	1
10	D	1123097	Shroud, Side w/ Decals, Dark Blue Pearl - Right	1	1
10	D	1123098	Shroud, Side w/ Decals, Dark Blue Pearl - Left	1	1
11		1110696	Shroud, Front Inner - Right	1	1
11		1110697	Shroud, Front Inner - Left	1	1

NOTE: A - Due to design change, for chairs built Before 11/24/03, Side Shrouds and Front Inner Shrouds must be replaced together. Kits provide all necessary parts.
B - Includes Side Shroud, Front Inner Shroud, and items 1-6.
C - Not Shown. Includes items 2-5.
D - Includes Decals, items 1 & 6.
E - Due to a supplier change it is recommended to order the right and left Side Shrouds to match in color shade for wheelchairs manufactured before 1/3/12.