

## Oxygen Concentrator, Portable XPO2, XPO2 QI



*Yes, you can.*

## Parts Catalog Usage Guide

The information contained in this document is subject to change without notice. This catalog contains service parts for Form No. 15-077. If you have any questions regarding this catalog, please contact one of our Customer Service Representatives.

### For Customer Service Support Call:

**1-800-333-6900**

### For Faxed In Orders Call:

**1-800-678-4682 or**

**1-440-366-0709**

### For Technical Service Call:

**1-800-832-4707**

### Literature Can Be Found at:

**www.invacare.com or**

**1-800-828-6272**

## SYMBOL DEFINITION

Throughout this catalog you will notice letters to draw your attention to specific footnotes which are located at the bottom of the page or below specified charts.

Examples:

A,B,C etc. = Special Comments

NOTE: = General information pertaining to that specific page

NLA = No Longer Available

## HARDWARE MEASUREMENTS

The measurements for the hardware will be listed as follows:

Screws, Bolts Diameter X Thread Count/Pitch X Length

Washers Inside Diameter X Outside Diameter X Thickness

Spacers Inside Diameter X Outside Diameter X Length

For your convenience, we have supplied an area for you to list your Invacare Representatives.

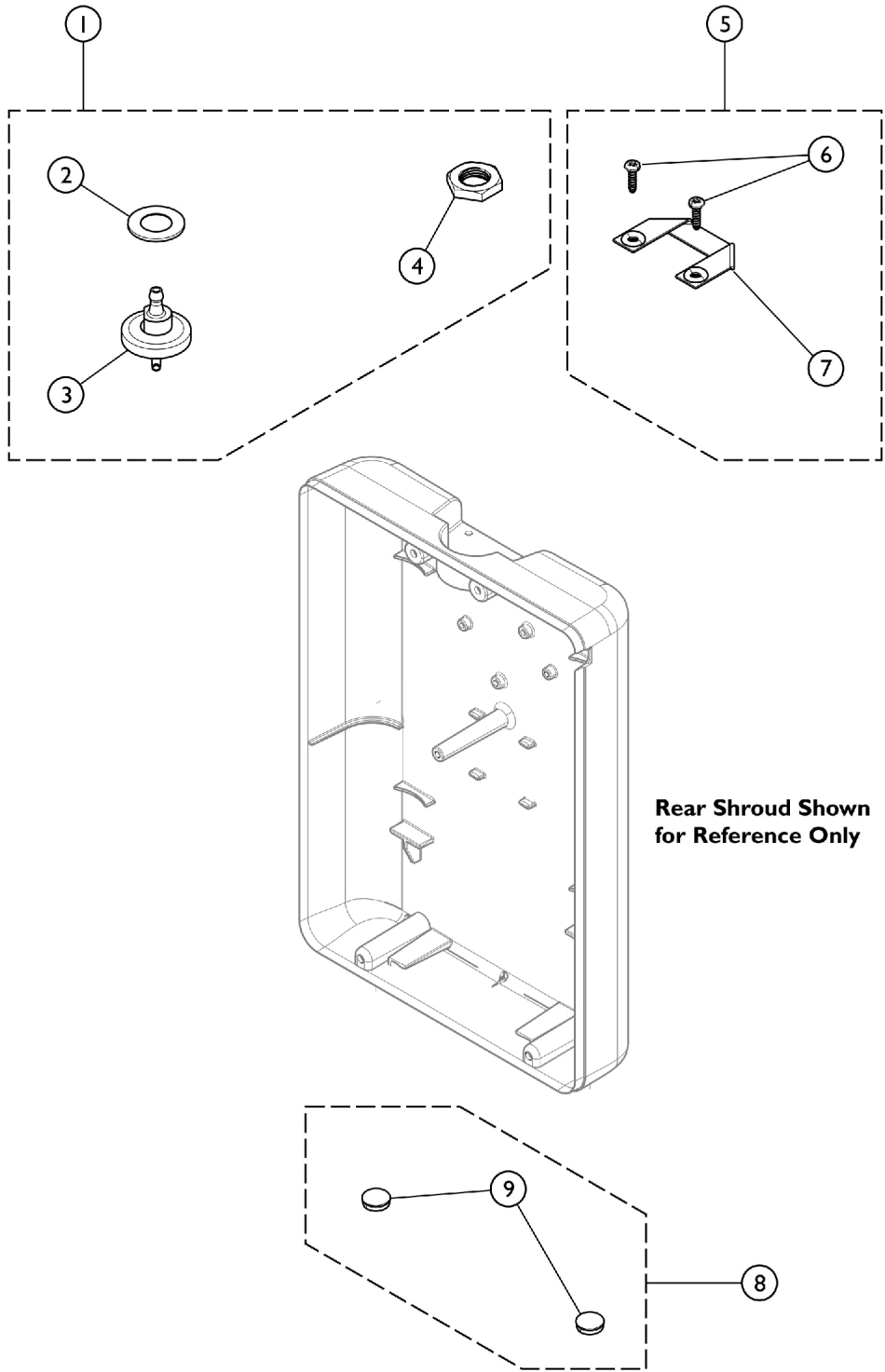
Name	Phone Numbers

© 2015 Invacare Corporation. All rights reserved. Republication, duplication or modification in whole or in part is prohibited without prior written permission from Invacare. Trademarks are identified by ™ and ®. All trademarks are owned by or licensed to Invacare Corporation or its subsidiaries unless otherwise noted.

# TABLE of CONTENTS

Description	Page Number
01. Shroud Components .....	3
02. Power Inlet .....	5
03. Front Assembly .....	7
04. Packaging and Inserts .....	9

# Shroud Components

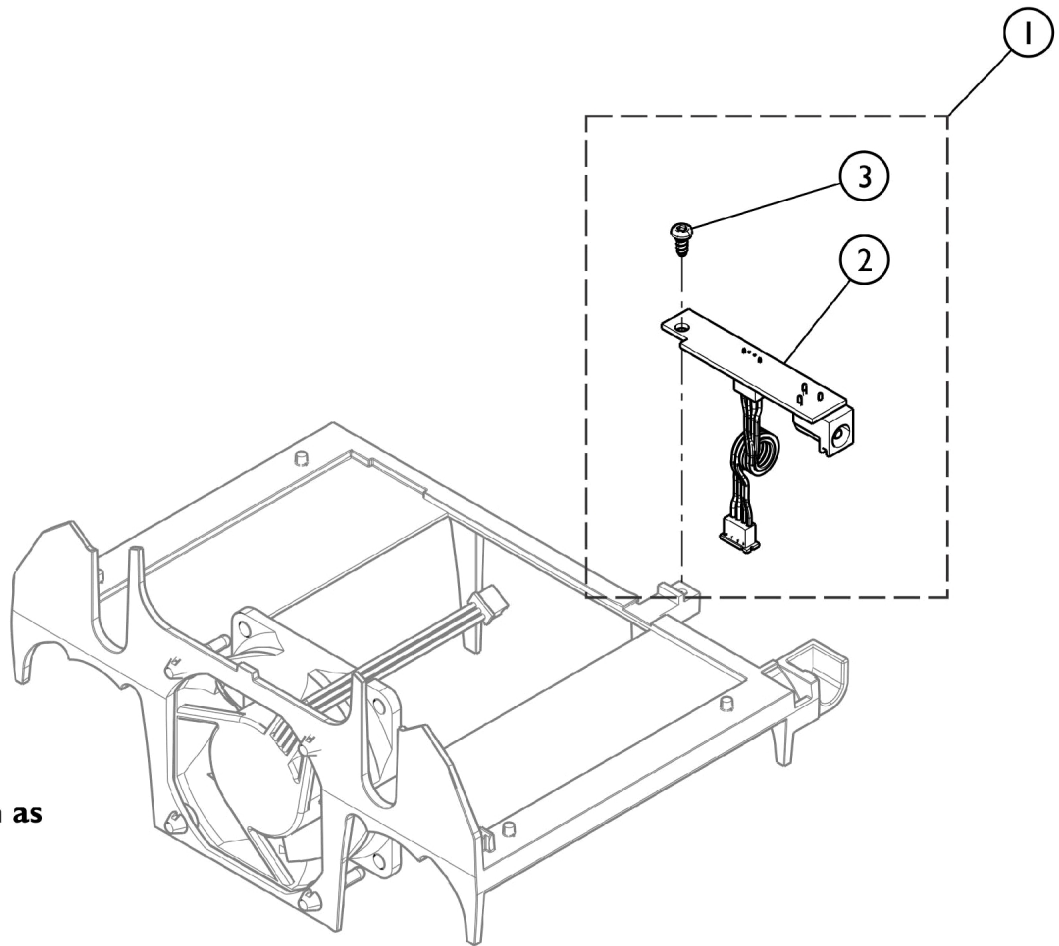


SRE\_006A

## Shroud Components

Item Number	Note	Part Number	Description	Quantity Per	
				Package	Assembly
1	A	1185319	Kit, HEPA Filter, XPO2	1	1
2			Washer (.56 x 1.00 x .063)	1	5
3			Outlet, HEPA Filter	1	5
4			Nut, Nylon, Black (9/16-18)	1	5
			Seal, Notice	1	5
5	B	1166963	Kit, Pull Strap	1	1
6			Screw, Pan Head, Torx (6-19 x 1/2)	1	2
7			Pull Strap	1	1
8	C	1185323	Kit, Bumper	1	1
9			Bumper, Adhesive Backed, Rubber Dome	1	9
NOTE: A - Kit includes items 2, 3, and 4. B - Kit includes items 6 and 7. C - Kit includes item 9.					

# Power Inlet



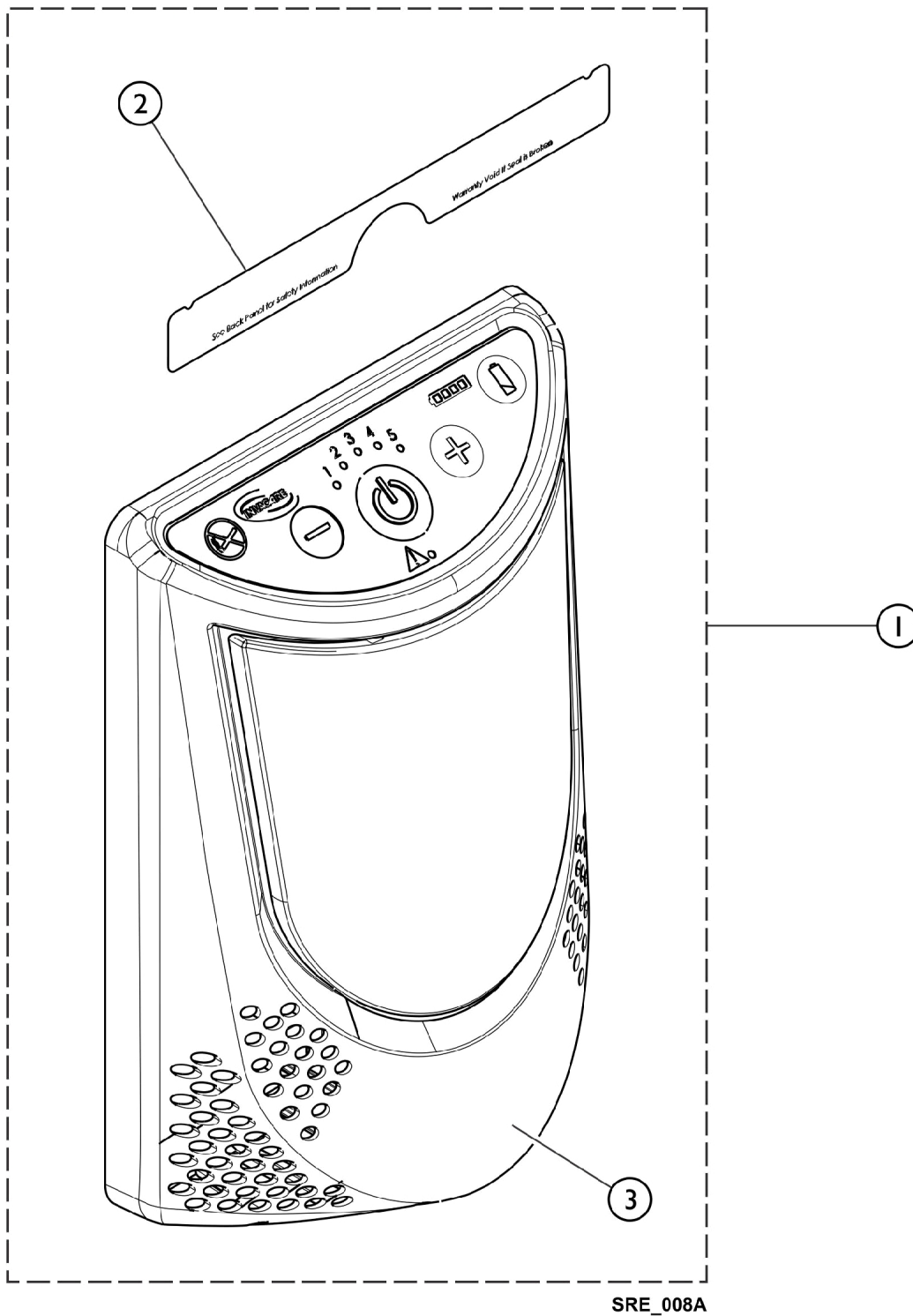
**Support Shown as  
Reference**

SRE\_007A

## Power Inlet

Item Number	Note	Part Number	Description	Quantity Per	
				Package	Assembly
1	A	1185321	Kit, Power Inlet, DC Jack, XPO2 QI	1	1
2			Power Inlet, PCB, XPO2	1	1
3			Screw, Pan Head, Torx (4-20 x 1/4)	1	1
			Seal, Notice	1	1
1	A	1185325	Kit, Power Inlet, DC Jack, XPO2	1	1
2			Power Inlet, PCB, XPO2	1	1
3			Screw, Pan Head, Torx (4-20 x 1/4)	1	1
			Seal, Notice	1	1
NOTE: A - Kit includes items 2, 3, and Seal Notice.					

# Front Assembly





## Front Assembly

Item Number	Note	Part Number	Description	Quantity Per	
				Package	Assembly
1	A	1185320	Kit, Upper Assembly, XPO2, QI	1	1
2			Seal, Notice	1	1
3			Front Assembly, XPO2	1	1
1	A	1185324	Kit, Upper Assembly, XPO2	1	1
2			Seal, Notice	1	1
3			Front Assembly, XPO2	1	1
NOTE: A - Kit includes items 2 and 3.					

## Packaging and Inserts

Item Number	Note	Part Number	Description	Quantity Per	
				Package	Assembly
1	A	1184129	Kit, Carton w/ Inserts	1	1
NOTE: A - Kit includes Shipping Carton, Lower Insert, and Tray Insert. No illustration.					

Invacare Corporation

[www.invacare.com](http://www.invacare.com)



***Yes, you can.***

One Invacare Way  
Elyria, Oh USA  
44036-2125  
800-333-6900

Technical Support  
800-832-4707  
Customer Service  
800-333-6900

Literature Orders  
800-333-6900

© 2015 Invacare Corporation. All rights reserved. Republication, duplication or modification in whole or in part is prohibited without prior written permission from Invacare. Trademarks are identified by <sup>™</sup> and ®. All trademarks are owned by or licensed to Invacare Corporation or its subsidiaries unless otherwise noted.  
(Revised 05/29/15)

Form No. 15-077