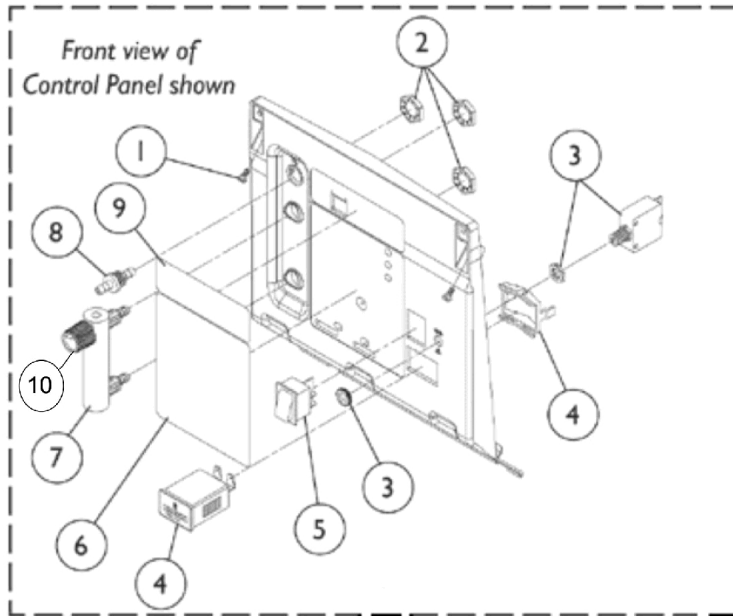


Control Panel - Front View

IRC5LXAW and IRC5LXO2AW



NOTE: There are 2 styles of #10 - flowmeter knobs. These knobs are NOT interchangeable. Refer to the photos below.

1128379



Used with flowmeters that have an indented Phillips head screw on top.

1128380



Used with flowmeters that have a slotted head screw on top.

Control Panel - Front View IRC5LXAW and IRC5LXO2AW

Item Number	Note	Part Number	Description	Quantity Per	
				Package	Assembly
1		2003065-NLA	NLA - Screw, Phillips Hex Washer Head (#8-32 x 3/8")	1	2
1		1128404	Screw, Phillips Hex Washer Head (#8-32 x 3/8")	1	2
2		2000507	Palnut (9/16-18)	1	3
3		1110824-NLA	NLA - Tech Only - Circuit Breaker (4 AMP)	1	1
4		1098707	Hour Meter Assembly with Clip	1	1
5		2001134	Switch, On/Off	1	1
5	G	1139950	Switch, Powe On/Off	1	1
6	A	1121467-NLA	NLA - Label, Control Panel, English - IRC5LXAW	1	1
6	A	1121475-NLA	NLA - Label, Control Panel, English - IRC5LXO2AW	1	1
7	F	1110823-NLA	NLA - Meter, Flow (0-5 LPM)	1	1
7	E	1110561	Flowmeter without Palnuts - 5 Liter	1	1
8		2000473	Connector, Barbed (1/4")	1	1
9	H	See Note	See Footnote	1	1
10		2001086-NLA	NLA - Knob, Flowmeter	1	1
10	C	1128379-NLA	NLA - Package, Knob, Flowmeter, Silver w/ Black Swish (Pkg. of 10)	10	1
10	D	1128380	Package, Knob, Flowmeter, Black w/ Silver Swish	10	1
	B	1101591	Support, Control Panel	1	2
	B,G	2001141-NLA	NLA - Seal, Switch	1	1
	B	1112562-NLA	NLA - Tech Only - Seal, Circuit Breaker	1	1

NOTE: A - Dependent on model.
 B - Not Shown.
 C - Knob is silver with black "swish". Used on flow meters with Phillips head indented screw on top.
 D - Knob is black with silver "swish". Used on flow meters with a slotted head screw on top.
 E - Palnuts not included. Refer to Item #2.
 F - Replace with #1110561.
 G - Individual item no longer available, refer to part #2001134 for replacement.
 H - No longer available as a service part in the field.