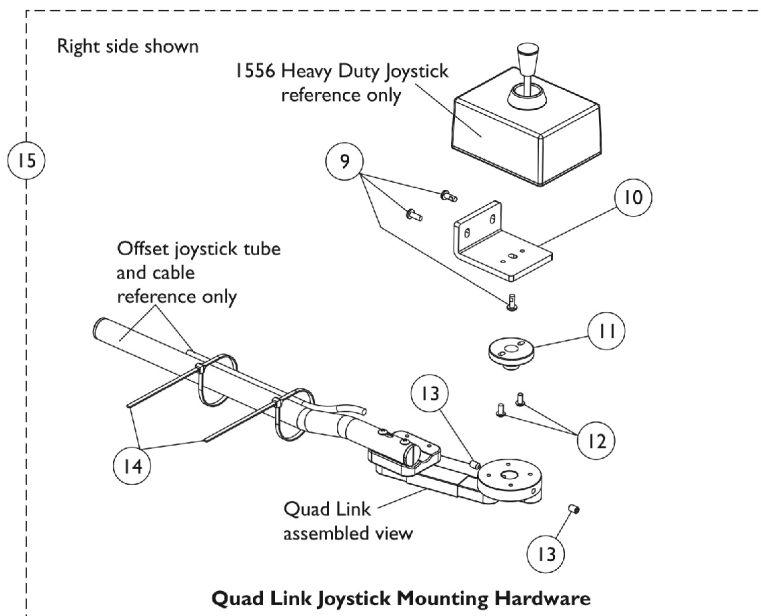
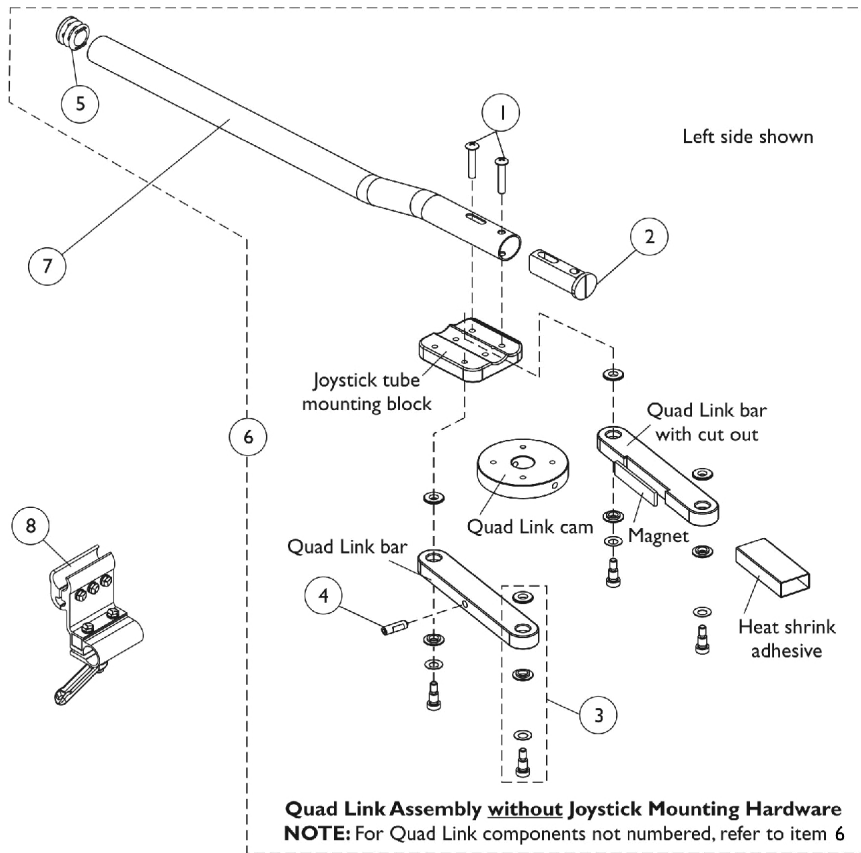


# Quad Link For 1556 Heavy Duty Joystick

10/9/03 Thru 1/12/04



## Quad Link For 1556 Heavy Duty Joystick

### 10/9/03 Thru 1/12/04

Item Number	Note	Part Number	Description	Quantity Per	
				Package	Assembly
1		1025714	Screw, Phillips Pan Head (#10-32 x 1-1/8")	1	2
2		1093063	Spacer, Joystick Tube, Black	1	1
3		1123005-NLA	NLA - Quad Link Hardware Consists Of: 4 each Screw, Socket Head Shoulder (1/4 x 1/4") 4 each Washer, Spring (1/4 x 1/2 x 1/32") 8 each Spacer, Flanged (1/4 x 9/16 x 1/8")	1	1
4		1123010-NLA	NLA - Screw, Socket Head Set w/ Patch (1/4-20 x 3/4")	1	1
5		1027095	Plug Button, Black (7/8")	1	1
6	A,C	1121120-NLA	NLA - Quad Link Assembly - Right	1	1
6	A,C	1123004-NLA	NLA - Quad Link Assembly - Left	1	1
7		1093506-NLA	NLA - Tube, Joystick Offset (1/2")	1	1
8		1093071	Clamp, Fixed Height Joystick Tube	1	1
9		1134086-NLA	NLA - Screw, Socket Button Head w/ Patch (#10-32 x 1/2")	1	3
10		1121111-NLA	NLA - Plate, 1556 Heavy Duty Joystick Quad Link	1	1
11		1121101-NLA	NLA - Mount, Joystick Spin	1	1
12		1016401-NLA	NLA - Screw, Phillips Round Head (#10-32 x 3/8")	1	2
13		1123010-NLA	NLA - Screw, Socket Head Set w/ Patch (1/4-20 x 3/4")	1	2
14		1095502-NLA	NLA - Package, Tie Wrap (11-1/2" L)	10	2
15	B,C	1121115-NLA	NLA - Quad Link Joystick Mounting Hardware	1	1

NOTE: A - Includes items 1-5. When ordering a Quad Link Assembly for the first time, item 15 must be ordered as well. When replacing an existing Quad Link made before 10/9/03, items 6, 7, 8 and 15 must be ordered.  
B - Includes items 9-14 and used for 1556 Heavy Duty Joystick.  
C - No Longer available, see Quad Link dated after 1/12/04