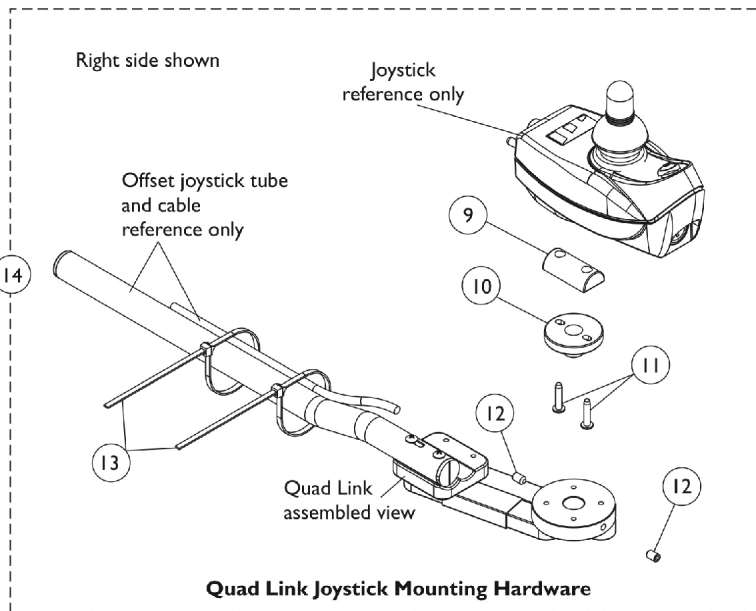
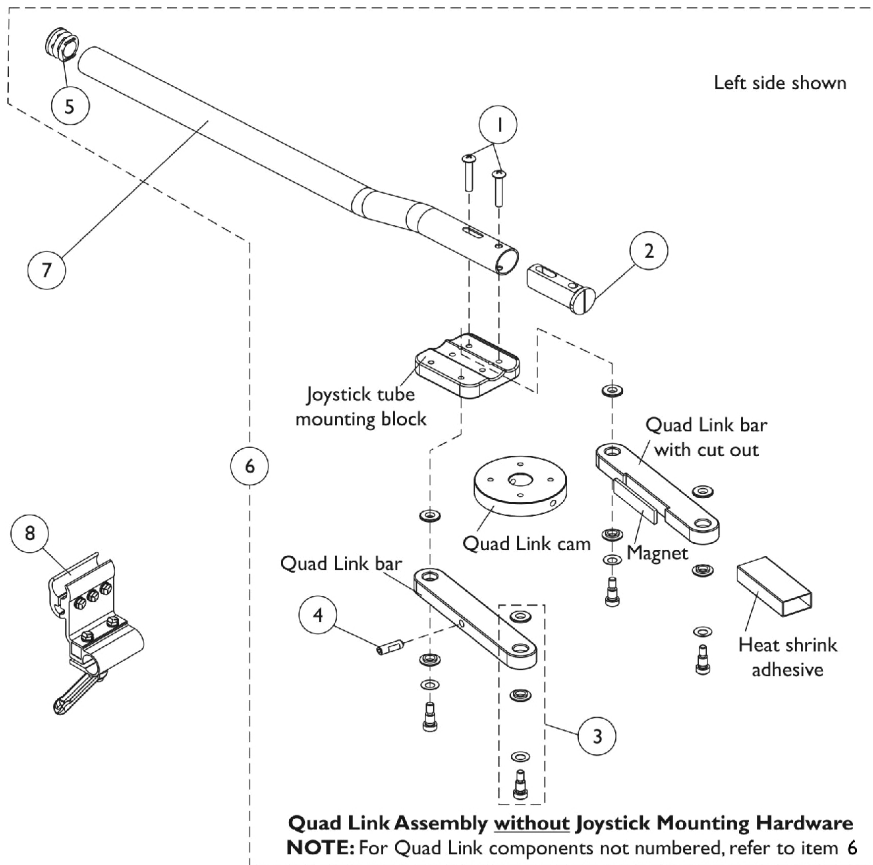


# Quad Link For MK5 DPJ Joystick

10/9/03 Thru 1/12/04



## Quad Link For MK5 DPJ Joystick

### 10/9/03 Thru 1/12/04

Item Number	Note	Part Number	Description	Quantity Per	
				Package	Assembly
1		1025714	Screw, Phillips Pan Head (#10-32 x 1-1/8")	1	2
2		1093063	Spacer, Joystick Tube, Black	1	1
3		1123005-NLA	NLA - Quad Link Hardware Consists Of: 4 each Screw, Socket Head Shoulder (1/4 x 1/4") 4 each Washer, Spring (1/4 x 1/2 x 1/32") 8 each Spacer, Flanged (1/4 x 9/16 x 1/8")	1	1
4		1123010-NLA	NLA - Screw, Socket Head Set w/ Patch (1/4-20 x 3/4")	1	1
5		1027095	Plug Button, Black (7/8")	1	1
6	A,C	1121120-NLA	NLA - Quad Link Assembly - Right	1	1
6	A,C	1123004-NLA	NLA - Quad Link Assembly - Left	1	1
7		1093506-NLA	NLA - Tube, Joystick Offset (1/2")	1	1
8		1093071	Clamp, Fixed Height Joystick Tube	1	1
9		1121100-NLA	NLA - Mount, Joystick Quad Link	1	1
10		1121101-NLA	NLA - Mount, Joystick Spin	1	1
11		1102546-NLA	NLA - Screw, Phillips Pan Head (#10-32 x 7/8")	1	2
12		1123010-NLA	NLA - Screw, Socket Head Set w/ Patch (1/4-20 x 3/4")	1	2
13		1095502-NLA	NLA - Package, Tie Wrap (11-1/2" L)	10	2
14	B,C	1121113-NLA	NLA - Quad Link Joystick Mounting Hardware	1	1
<p>NOTE: A - Includes items 1-5. When ordering a Quad Link Assembly for the first time, item 14 must be ordered as well. When replacing an existing Quad Link made before 10/9/03, items 6, 7, 8 and 14 must be ordered.            B - Includes items 9-13 and used for MK5 DPJ joystick.            C - No Longer available, see Quad Link dated after 1/12/04</p>					