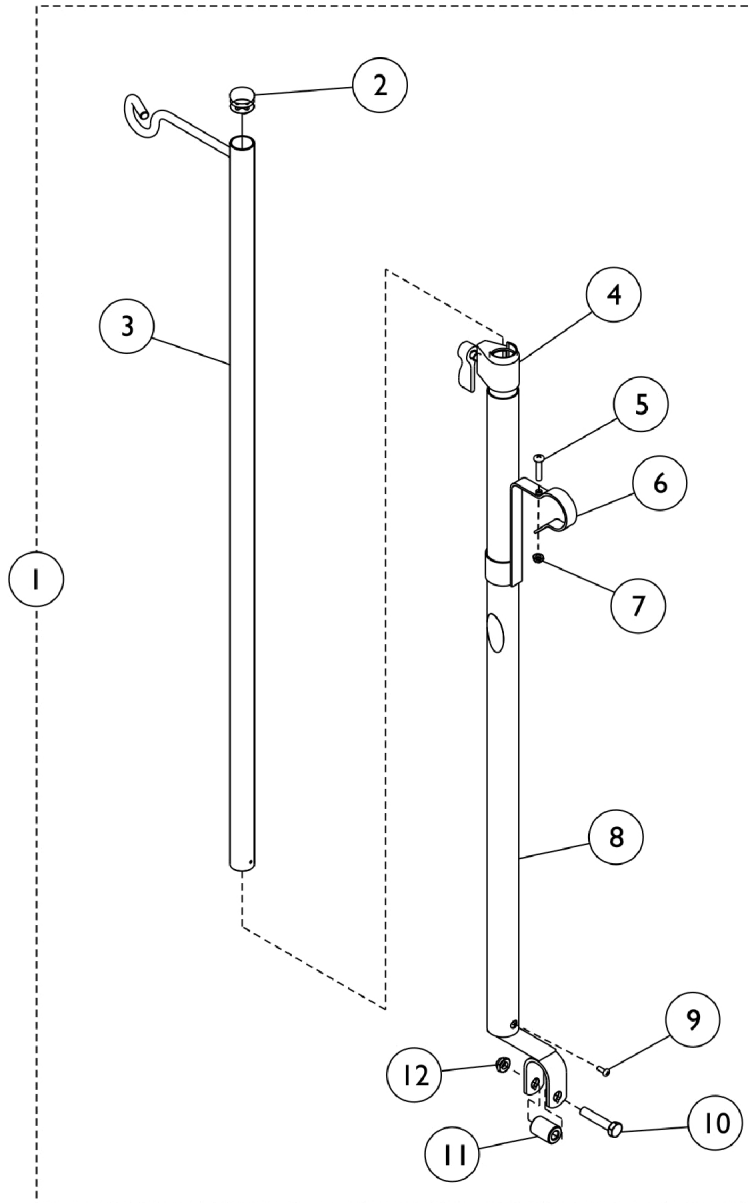


# I.V. Rod and Bracket (2218)

NOTE: If your chair was built with a serial # starting with "03H" or "03I", please contact an Invacare Parts Specialist for replacement parts at 1-800-333-6900 Ext. 3722.



## I.V. Rod and Bracket (2218)

**NOTE: If your chair was built with a serial # starting with "03H" or "03I", please contact an Invacare Parts Specialist for replacement parts at 1-800-333-6900 Ext. 3722.**

Item Number	Note	Part Number	Description	Quantity Per	
				Package	Assembly
1		1101760-NLA	NLA - Rod, I.V., Telescoping (Model 2218)	1	1
2		1027095	Plug Button, Black (7/8")	1	1
3		04701X028	Rod, I.V.	1	1
4		12592X000-NLA	NLA - Adjustment Lock Assembly, Chrome	1	1
5		16718X000-NLA	NLA - Screw, Phillips Pan Head (#10-32 x 7/8")	1	1
6		1020082	Bracket, Mounting, Chrome	1	1
7		60279X003	Locknut (#10-32)	1	1
8		1017623	Socket, I.V.	1	1
9		21243X000-NLA	NLA - Screw, Phillips Pan Head (#6-20 x 3/8")	1	1
10		11239X001	Screw, Hex Head (5/16-24 x 1-1/2")	1	1
11		1017843-NLA	NLA - Spacer, Chrome (5/16 x 11/16 x 15/16")	1	1
12		60264X001	Locknut (5/16-24)	1	1
	A	1023618	Insert, Guide Tube, Black (1" Long)	1	1
	A	1114827	Instruction Sheet	1	1

NOTE: A - Not Shown.