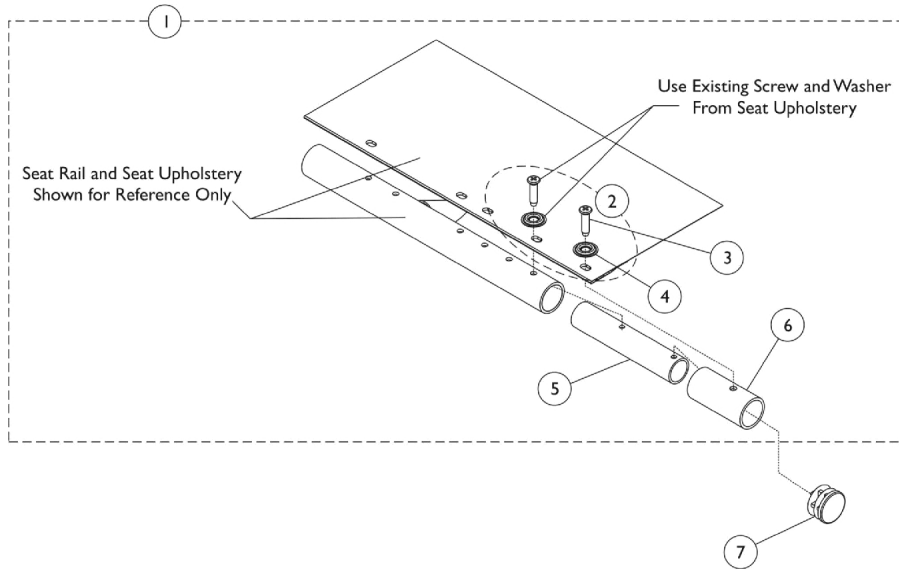


# Seat Extensions

**NOTE: If your chair was built with a serial # starting with "03H" or "03I", please contact an Invacare Parts Specialist for replacement parts at 1-800-333-6900 Ext. 3722.**



## Seat Extensions

**NOTE: If your chair was built with a serial # starting with "03H" or "03I", please contact an Invacare Parts Specialist for replacement parts at 1-800-333-6900 Ext. 3722.**

Item Number	Note	Part Number	Description	Quantity Per	
				Package	Assembly
1	A,B	1119122	Kit, Seat Extension (2")	1	1
3			Screw, Phillips Oval Head (#12-14 x 7/8")	1	2
4			Washer (1/4 x 3/4 x 3/32")	1	2
5			Tube, Insert, Black	1	2
6			Spacer	1	2
2			C	1131378	Kit, Hardware
3	Screw, Phillips Oval Head (#12-14 x 7/8")	1			12
4	Washer (1/4 x 3/4 x 3/32")	1			12
7	1027095	Plug Button, Black (7/8")			1
NOTE: A - Includes items 3-6. B - For 20" seat depth, includes items 2-5 all at quantity 2. C - Includes 3 and 4.					