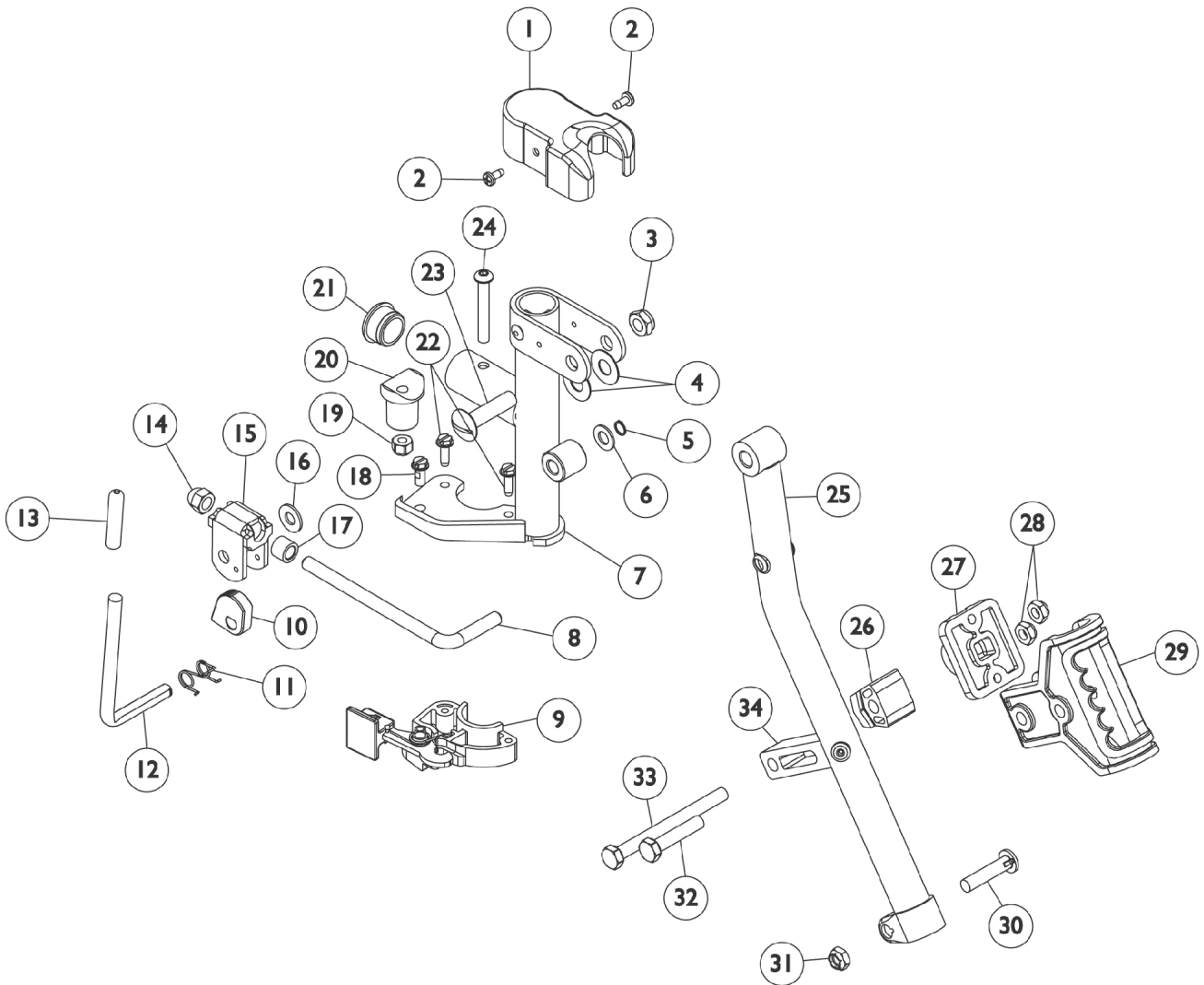


Legrest Support - AT5044

Ratchet Style (Before 9/21/05)



Legrest Support - AT5044 Ratchet Style (Before 9/21/05)

Item Number	Note	Part Number	Description	Quantity Per	
				Package	Assembly
1		1017187	Cover, Top	1	1
2		1025729	Screw, Phillips Pan Head Tap (#8-32 x 3/8")	1	2
3		40363X000	Hex Nut (3/8"-16)	1	1
4		1058636-NLA	NLA - Washer, Nylon (25/64 x 7/8 x 1/32")	1	2
5		1040831	Ring, Snap	1	1
6		1025704	Washer, Flat (5/16 x 5/8 x 1/16")	1	1
7	F	8881065812-NL A	NLA - Bracket, Legrest Support, Color - Right	1	1
7	F	8881065813-NL A	NLA - Bracket, Legrest Support, Color - Left	1	1
8		1113030	Bar, Ratchet	1	1
9		1025454	Housing, Latch - Right	1	1
9		1025455	Housing, Latch - Left	1	1
10		1037125	Cam, Legrest	1	1
11		1037485	Spring, Release	1	1
12		1065802-NLA	NLA - Handle, Release	1	1
13		1040060	Tip, Plastic, Black	1	1
14		10261X000	Nut, Acorn (5/16-24)	1	1
15		04528X002	Bracket, Release, Black	1	1
16		1013519	Washer, Nylon (5/16 x 11/16 x 1/16")	1	1
17		47330X003	Spacer (5/16 x 1/2 x 3/8")	1	1
18		1017423	Screw, Slotted Hex Washer Head w/ Patch (#10-32 x 1/2")	1	1
19		1025736	Locknut (1/4-20)	1	1
20		1017148	Pivot, Footrest	1	1
21		1056328	Plug Button, Black (1")	1	1
22		1025451	Screw, Slotted Hex Washer Head (#10-32 x 5/8")	1	2
23		11919X000-NLA	NLA - Screw, Slotted Truss Head (3/8-16 x 1-1/2")	1	1
24		1001762	Screw, Socket Button Head (1/4-20 x 1-3/4")	1	1
25	C	1043556-NLA	NLA - Tube, Elevating Adjustable Support, Black - Right	1	1
25	C	1043557-NLA	NLA - Tube, Elevating Adjustable Support, Black - Left	1	1
26		1025133	Spacer, Legrest Pad, Black	1	1
27		04526X019	Plate, Legrest Pad	1	1
28		1025730	Locknut (5/16-24)	1	3
29		1032266	Bracket, Legrest Pad Mounting, Black	1	1
30		1026030	Bolt, Lug (5/16-24 x 1-3/8")	1	1
32		1028514	Screw, Hex Head (5/16-24 x 1-1/2")	1	1
33		1037110	Screw, Hex Head (5/16-24 x 3-1/2")	1	1
34		1032267	Spacer, Legrest Pad Mounting, Black	1	1
	B,D,E	8881065806	Legrest Support Assembly, Sector, Color - Right	1	1
	B,D,E	8881065807	Legrest Support Assembly, Sector, Color - Left	1	1
	A,C,E	8881065804-NL A	NLA - Legrest Support Assembly, Sector, Color - Right	1	1
	A,C,E	8881065805-NL A	NLA - Legrest Support Assembly, Sector, Color - Left	1	1

Legrest Support - AT5044

Ratchet Style (Before 9/21/05)

NOTE: A - Includes Items 1-34 with Calf Pad.
B - 12-20" Wide Chairs
C - 22" Wide Chairs
D - Includes items 1-16 and 18-34.
E - Not Shown.
F - Specify frame finish when ordering

See Calf Pad and Ratchet Assembly sections for their prospective part numbers.