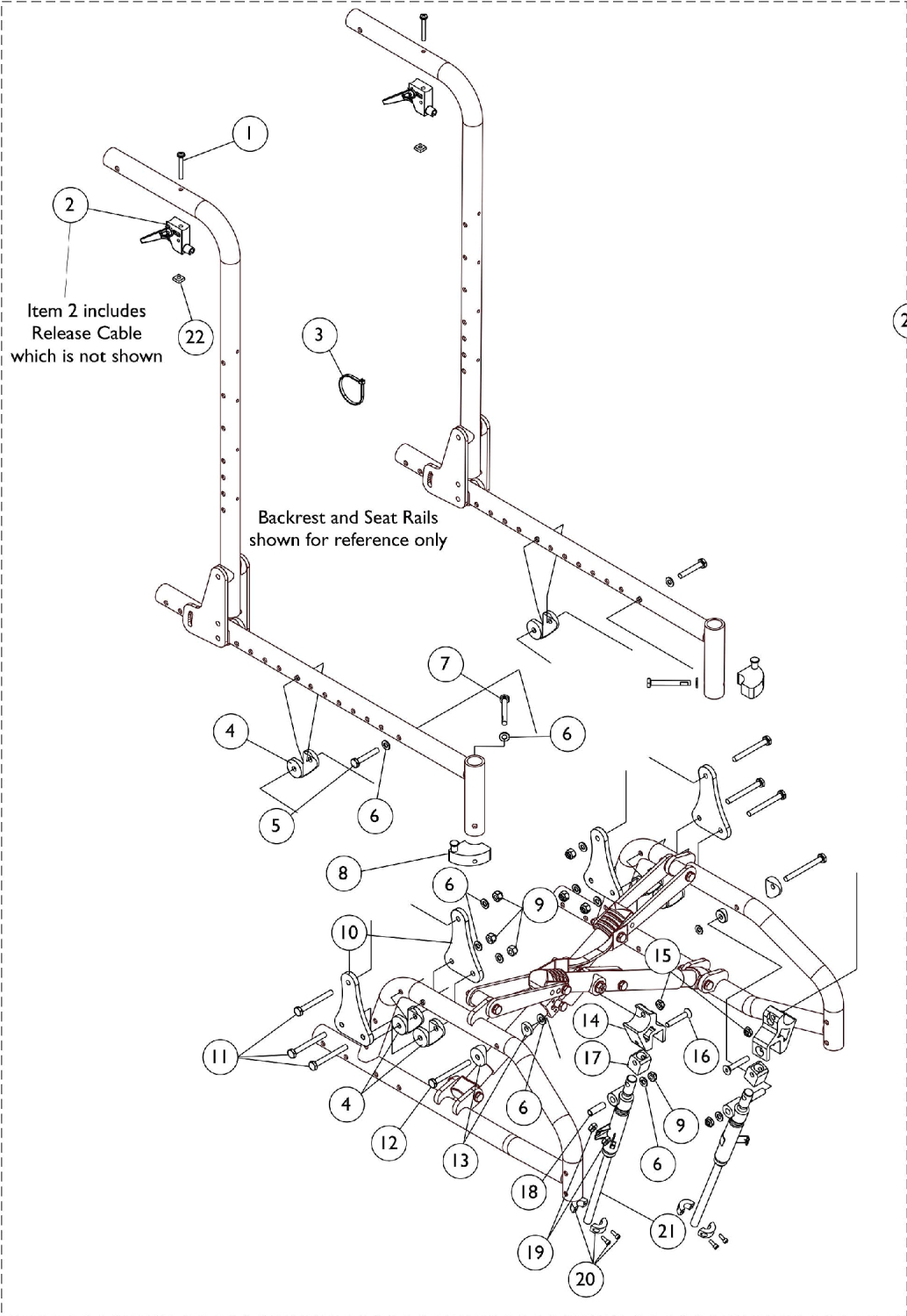


Tilt Hardware



Tilt Hardware

Item Number	Note	Part Number	Description	Quantity Per	
				Package	Assembly
1		1026107	Screw, Phillips Pan Head (#10-32 x 1-3/8")	1	2
2		1078451	Release Handle Assembly w/ Cable	1	2
3		1021260	Tie Wrap (5-5/8" L)	1	1
4		1118469	Uni-Washer, Coved	1	6
5		1055347-NLA	NLA - Screw, Hex Head (1/4-28 x 1-1/2")	1	2
6		1026907	Washer (1/4 x 1/2 x 1/16")	1	14
7		1052957	Screw, Hex Head w/ Patch (1/4-20 x 2")	1	2
8	B	1054571	Kit, Sector Block - Right	1	1
8	B	1054572	Kit, Sector Block - Left	1	1
9		1065362	Locknut (1/4-28)	1	8
10		1118471-NLA	NLA - Plate, Tilt	1	4
11		1055350	Screw, Hex Head (1/4-28 x 2-1/4")	1	6
12		1118541-NLA	NLA - Screw, Hex Head (1/4-28 x 2-3/4")	1	2
13		1026099	Spacer, Coved (1/4 x 11/16 x 1/2")	1	4
14		1118472	Bracket, Lock Cylinder, Black	1	2
15		1025765	Locknut (1/4-28)	1	2
16		1060097-NLA	NLA - Screw, Socket Flat Head (1/4-28 x 1-1/2")	1	2
17		1118470	Sleeve, Cylinder	1	2
18		1118534	Bushing, Steel (5/16 x 1/4 x 1")	1	2
19		1071276-NLA	NLA - Nut, Hex (1/4-20)	1	4
20		1073707	Clamp, Cylinder with Screws	1	2
21		1024006	Cylinder, Lock, Silver - Right	1	1
21		1037658	Cylinder, Lock, Silver - Left	1	1
22		1086207	Nut, Square (#10-32)	1	2
23	A	1118548	Tilt Hardware Kit (Both Sides)	2	1

NOTE: A - Includes items 1-22
 B - Includes sector block and hardware, items 6 and 7.