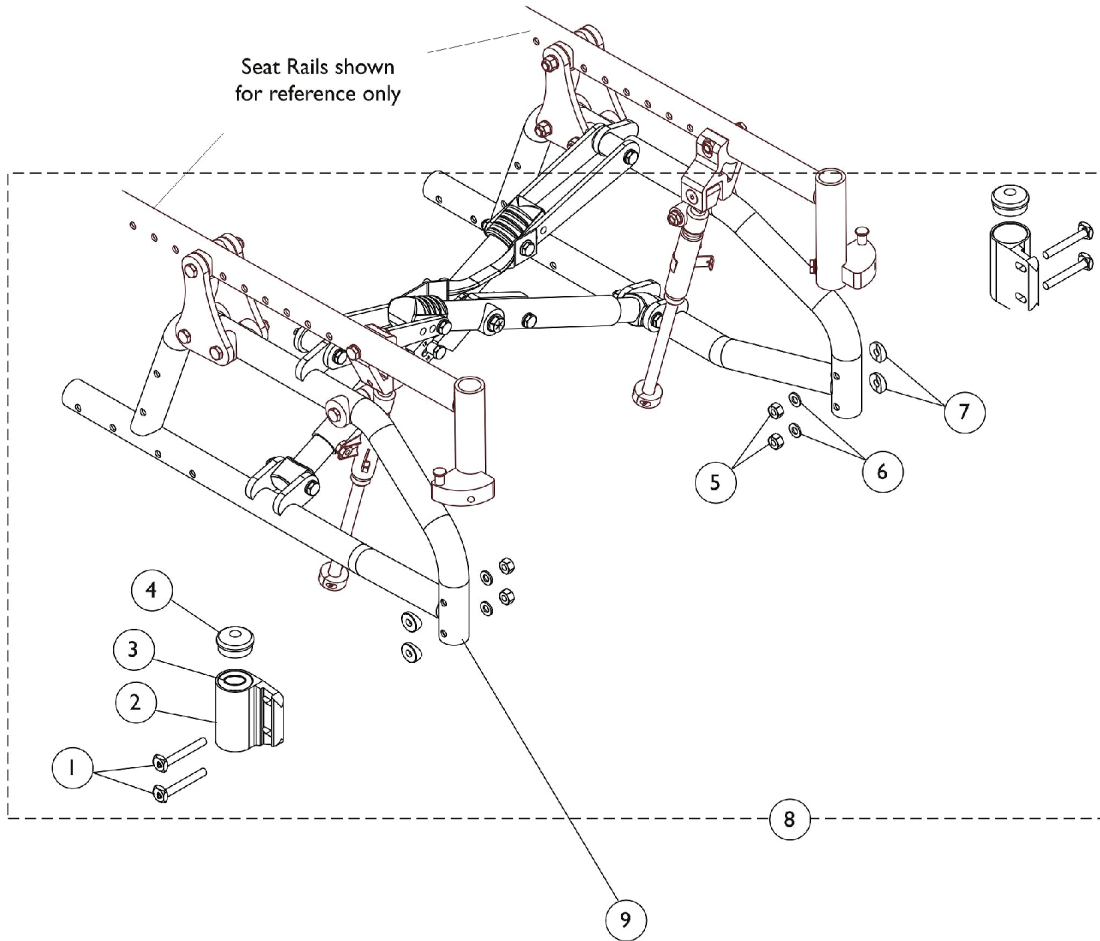


# Frames and Frame Hardware

Transport Ready Chairs requiring Frames and/or Frame Hardware parts must be returned to Invacare for service.



## Frames and Frame Hardware

Transport Ready Chairs requiring Frames and/or Frame Hardware parts must be returned to Invacare for service.

Item Number	Note	Part Number	Description	Quantity Per	
				Package	Assembly
1	C	1113501	Screw, Eccentric (1/4-28 x 1-11/16")	1	4
1	D	1118497	Screw, Eccentric (1/4-28 x 1-7/8")	1	4
2		1118542	Caster Headtube Assembly, Black - Right	1	1
2		1118543	Caster Headtube Assembly, Black - Left	1	1
3		40117X021	Bearing (1/2" I.D. x 1-1/8" O.D.)	1	4
4		1088523	Plug Button, Head Tube, Black	1	2
5		1055366	Locknut (1/4-28)	1	4
6		1026907	Washer (1/4 x 1/2 x 1/16")	1	4
7		1009861	Spacer, Coved (1/4 x 11/16 x 1/2")	1	4
8	A	1118551	Kit, Frame Hardware, Non Transport Ready Chairs (Pair)	2	1
9	B	8881118493	Frame without Hardware, Color - Right	1	1
9	B	8881118494	Frame without Hardware, Color - Left	1	1

NOTE: A - Includes items 1-7  
 B - Specify Frame Finish when ordering  
 C - These screws are used on chairs "without" TRBKTS or TRRO Option.  
 D - These screws used on chairs equipped with TRBKTS or TRRO Option