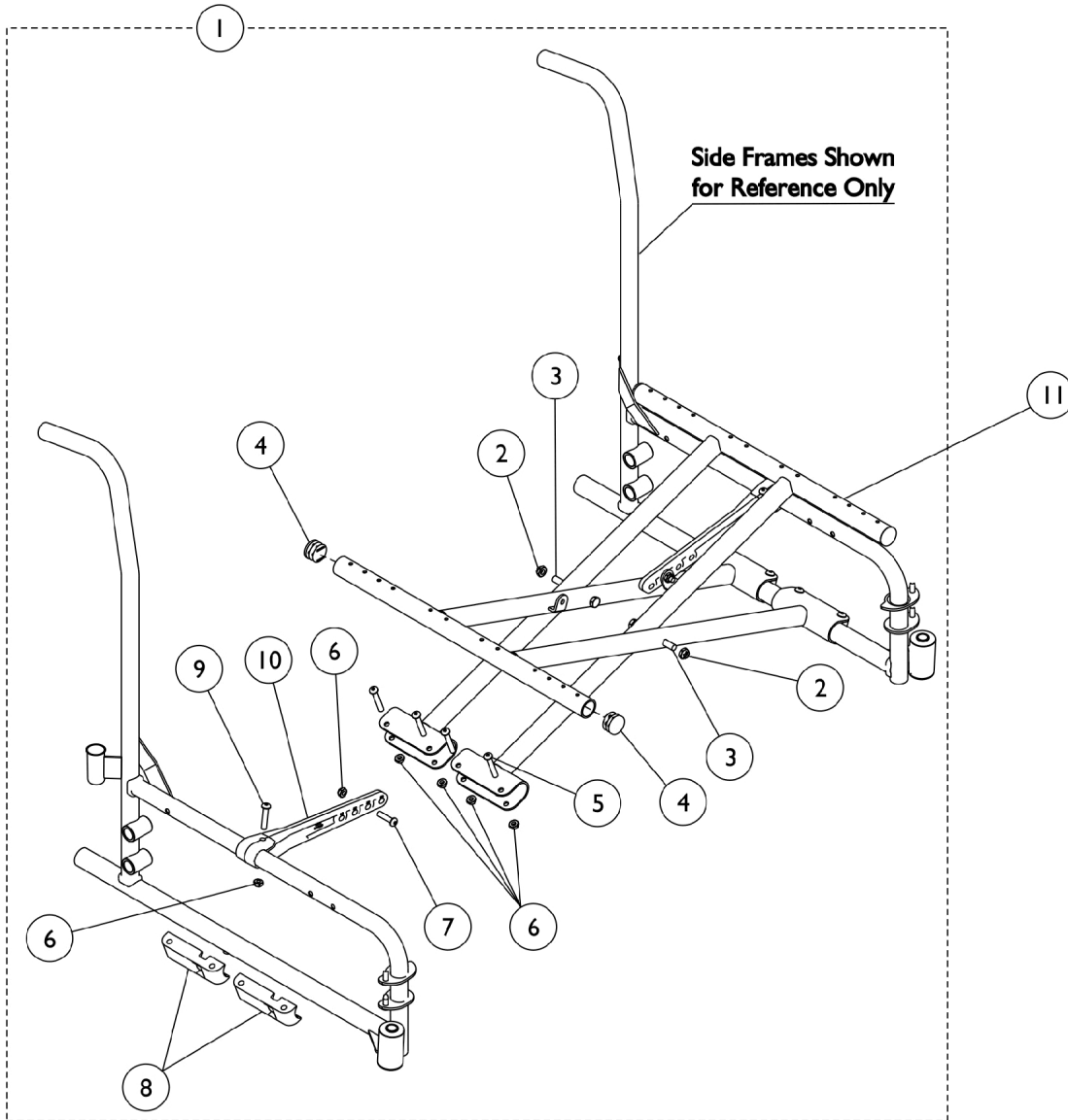


# Crossbraces and Hardware

NOTE: If your chair was built with a serial # starting with "03H" or "03I", please contact an Invacare Parts Specialist for replacement parts at 1-800-333-6900 Ext. 3722.



## Crossbraces and Hardware

**NOTE: If your chair was built with a serial # starting with "03H" or "03I", please contact an Invacare Parts Specialist for replacement parts at 1-800-333-6900 Ext. 3722.**

Item Number	Note	Part Number	Description	Quantity Per	
				Package	Assembly
1	A	1118201	Hardware, X-Brace (18 - 24" W)	1	1
2		60264X001	Locknut (5/16-24)	1	2
3		40317X001	Screw, Hex Head (5/16-24 x 2-3/4")	1	2
4		1027095	Plug Button, Black (7/8")	1	4
5		1008495	Screw, Socket Button Head (1/4-20 x 1-1/2")	1	8
6		60275X000	Locknut (1/4-20)	1	12
7		1009837	Screw, Socket Button Head (1/4-20 x 1")	1	2
8		1012172-NLA	NLA - Clamp, Saddle	1	4
9		1008432	Screw, Socket Button Head (1/4-20 x 1-1/4")	1	2
10		1118199	Link, Pivot, Black (18 - 24" W)	1	2
11		1118206	Crossbrace, Black (18" W)	1	2
11		1117405	Crossbrace, Black (20" W)	1	2
11		1117406	Crossbrace, Black (22" W)	1	2
11		1117407	Crossbrace, Black (24" W)	1	2

NOTE: A - Includes items 2-10.