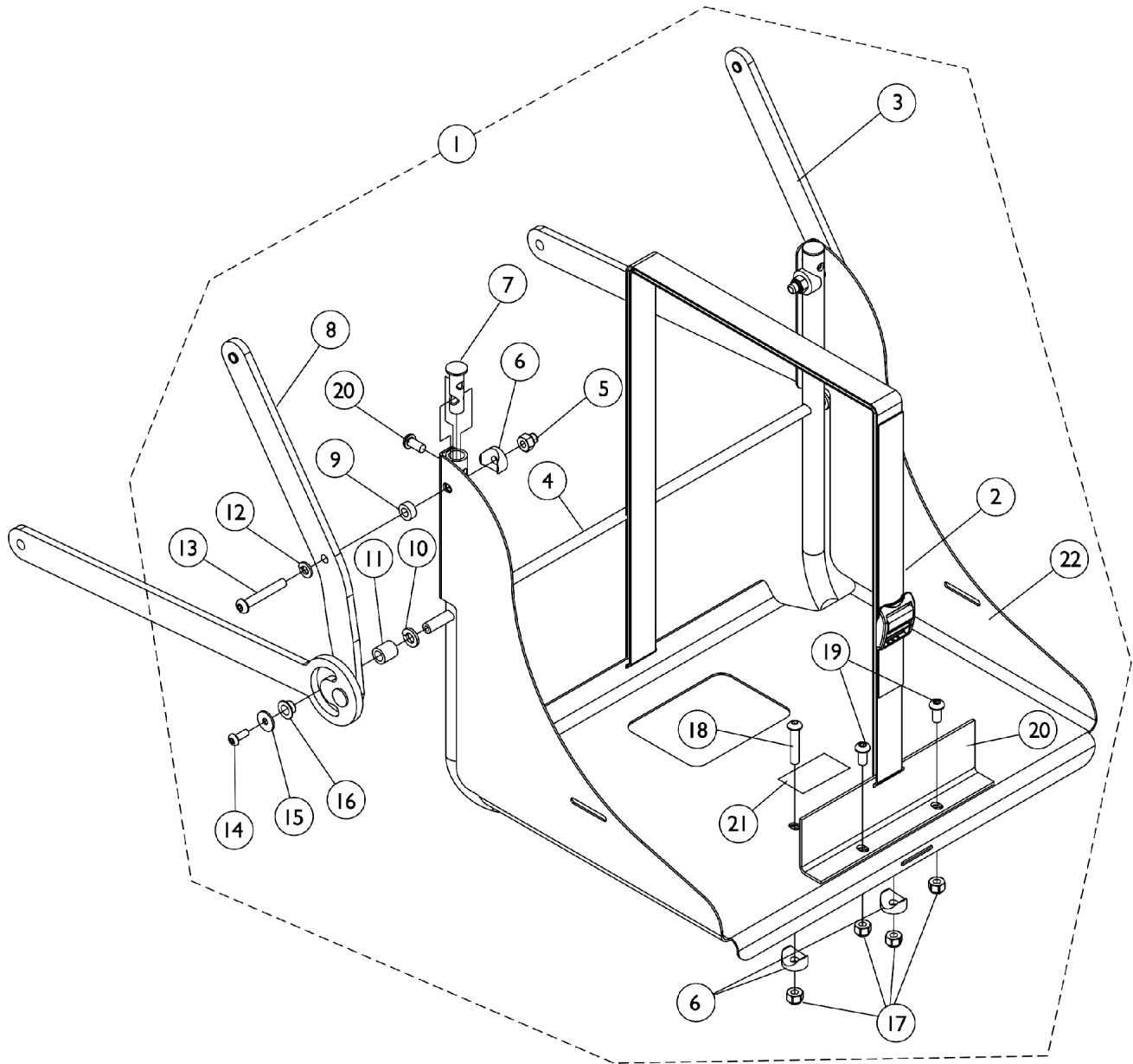


Vent Tray Assembly without Mounting Hardware



Vent Tray Assembly without Mounting Hardware

Item Number	Note	Part Number	Description	Quantity Per	
				Package	Assembly
1	A,B	1115816-NLA	NLA - Vent Tray Assembly	1	1
2		1113258-NLA	NLA - Strap and Buckle Assembly	1	1
3		1113256-NLA	NLA - Vent Tray Linkage Assembly - Right	1	1
4		1113636-NLA	NLA - Tube, Vent Tray Support, Black	1	1
5		1044214	Nut, Hex with Nylon Cap (1/4-20)	1	2
6		1025457	Spacer, Coved (1/4 x 3/4 x 11/32")	1	4
7		1115813-NLA	NLA - Plug, Slide Tube	1	2
8		1113257-NLA	NLA - Vent Tray Linkage Assembly - Left	1	1
9		1026104-NLA	NLA - Spacer	1	2
10		1072692-NLA	NLA - Lockwasher, Split (5/16")	1	2
11		1115822-NLA	NLA - Spacer, Vent	1	2
12		1007453	Lockwasher, Split (1/4")	1	2
13		1019590	Screw, Socket Button Head (1/4-20 x 1-5/8")	1	2
14		1072319-NLA	NLA - Screw, Socket Button Head (#10-32 x 1/2")	1	2
15		1070587	Washer, Flat (3/16 x 5/8 x 1/16")	1	2
16		1079635	Bushing, Flange	1	2
17		1025736	Locknut (1/4-20)	1	4
18		1008432	Screw, Socket Button Head (1/4-20 x 1-1/4")	1	2
19		1006773-NLA	NLA - Screw, Socket Button Head (1/4-20 x 1/2")	1	4
20		1115820-NLA	NLA - Bracket, Vent Tray, Black	1	1
21		1118361-NLA	NLA - Decal, Warning, Approved Charger and Harness	1	1
22	C,D	1114968-NLA	NLA - Tray, Vent	1	1
		1125645-NLA	NLA - Spring, Dark Yellow, EXTRA Heavy Duty	1	2
NOTE: A - Includes items 2-22 and used for 2GT, 2GR and 2GTR systems. When adding a vent tray assembly to extruded back canes for the first time, see page titled "Vent Tray Kit For Extruded Back Canes" and order item number 1 B - When Center Mount Riggings are present and a customer is adding a Vent Tray for the first time in the field, additional Invacare Technical Assistance may be required. Call 1-800-832-4707 for instructions. C - Not Shown. EXTRA Heavy Duty Springs must be ordered as well when a vent tray assembly is requested for the first time. D - Spring color changed from Sunny Yellow to Dark Yellow 3/22/10. It is recommended to order springs in pairs to match color and maintain equal spring tension on both sides of the wheelchair					