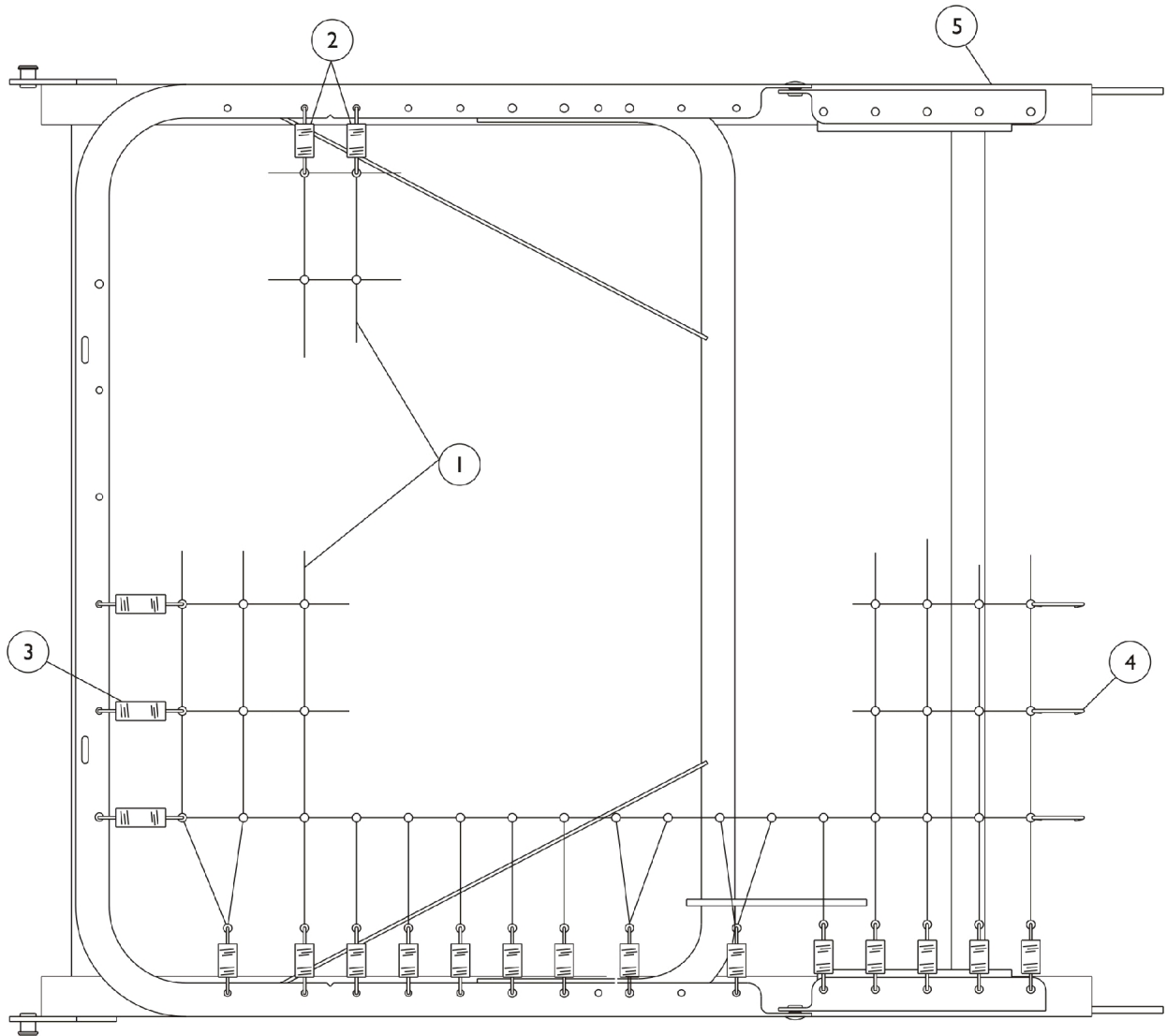


# Head Springs 5000 and 5000IVC



## Head Springs 5000 and 5000IVC

Item Number	Note	Part Number	Description	Quantity Per	
				Package	Assembly
1		51000M133	Fabric, Link - Head Spring (16 x 7")	1	1
2		51000M135	Spring, Helical (11 turns)	1	28
3		51000M136	Spring, Helical (18 turns)	1	6
4		51000M013	Link, Center	1	6
5	A	5000M001	Frame, Head Spring (without fabric), Brown	1	1
NOTE: A - Part cannot be serviced in the field. Invacare uses a stretching machine to put the springs on.					
Part number 5000M001 cannot be serviced in the field. Invacare uses a stretching machine to put the springs on.					