

Veranda™ 4000 (K0004) and 3000 (K0003)

Wheelchair



Yes, you can.

Parts Catalog Usage Guide

The information contained in this document is subject to change without notice. This catalog contains service parts for Form No. 13-510. If you have any questions regarding this catalog, please contact one of our Customer Service Representatives.

For Customer Service Support Call:

1-800-333-6900

For Faxed In Orders Call:

1-800-678-4682 or

1-440-366-0709

For Technical Service Call:

1-800-832-4707

Literature Can Be Found at:

www.invacare.com or

1-800-828-6272

SYMBOL DEFINITION

Throughout this catalog you will notice letters to draw your attention to specific footnotes which are located at the bottom of the page or below specified charts.

Examples:

A,B,C etc. = Special Comments

NOTE: = General information pertaining to that specific page

NLA = No Longer Available

HARDWARE MEASUREMENTS

The measurements for the hardware will be listed as follows:

Screws, Bolts Diameter X Thread Count/Pitch X Length

Washers Inside Diameter X Outside Diameter X Thickness

Spacers Inside Diameter X Outside Diameter X Length

For your convenience, we have supplied an area for you to list your Invacare Representatives.

Name	Phone Numbers

© 2019 Invacare Corporation, Elyria, Ohio. Invacare, the Medallion Design and Yes, you can. are registered trademarks; Veranda is a trademark of Invacare Corporation.

TABLE of CONTENTS

Description	Page Number
Accessories	22
Arms - Space Saver Fixed Height	6
Back Cane and Hardware	4
Forks and Hardware	10
Frame Finishes, Upholstery Colors, Decals and Literature	3
Front Casters and Mounting Hardware	12
Front Riggings - Footrest	18
Front Riggings - Legrest, Calf Pad and Mounting Hardware	20
Upholstery - Seat, Back and Hardware	8
Wheel Lock and Mounting Hardware	16
Wheels - Rear, Handrim and Mounting Hardware	14

Frame Finishes, Upholstery Colors, Decals and Literature

Frame Finishes

Color Number	Color
71P	Silver Vein

Upholstery Color

Color Number	Description
U240	Nylon - Black

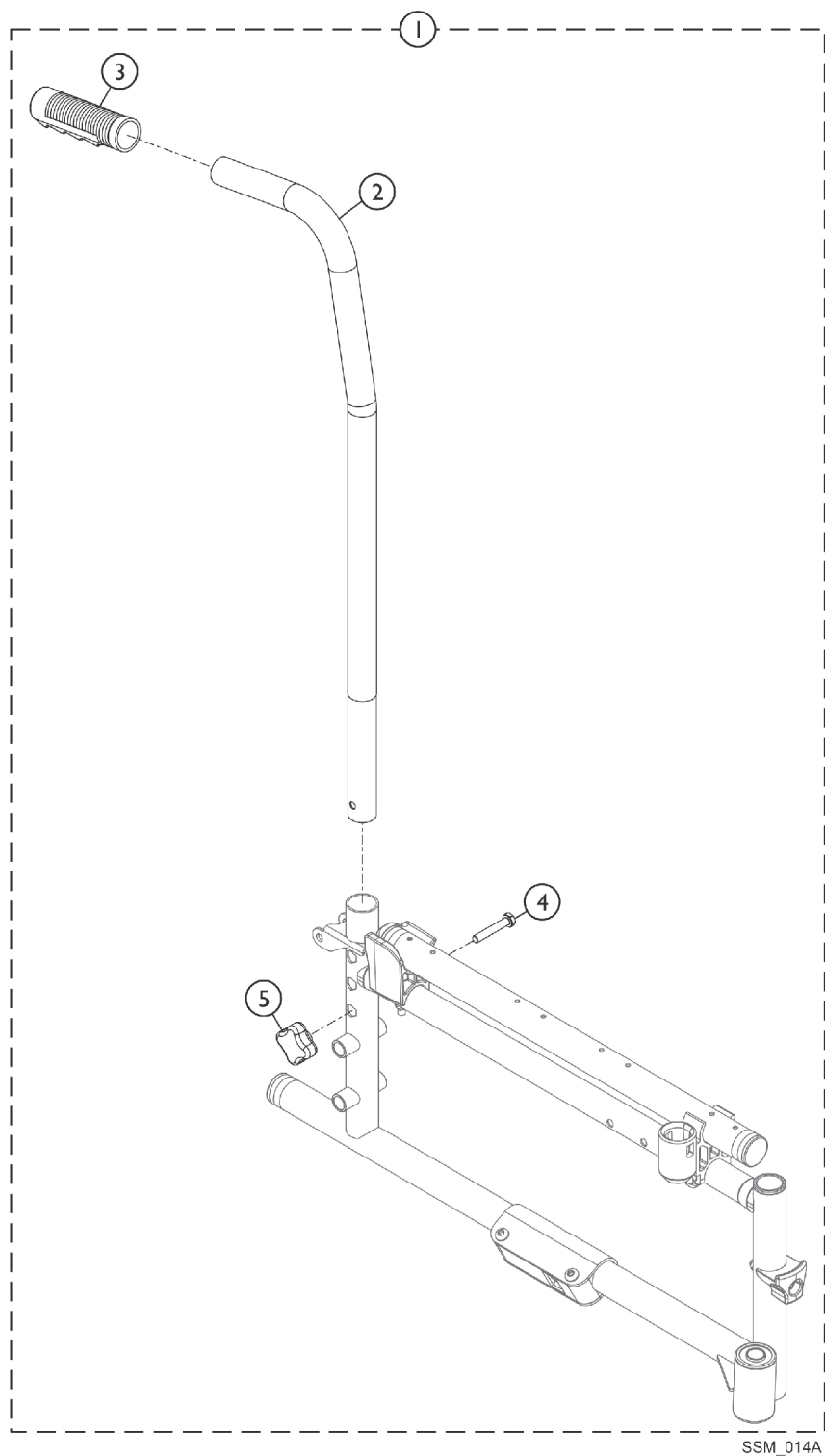
Decals

Description	Part Number	Quantity
Invacare Logo Decal	1095498-NLA	2

Literature

Description	Part Number
Veranda 3000 and Veranda 4000 Owner's Manual	1567855
The Owner's Manual is not sold as a service part. Refer to www.invacare.com/homecare . Under Product Literature Search enter part #1567855 in the "Keywords - Field" and view/print a copy for your reference.	

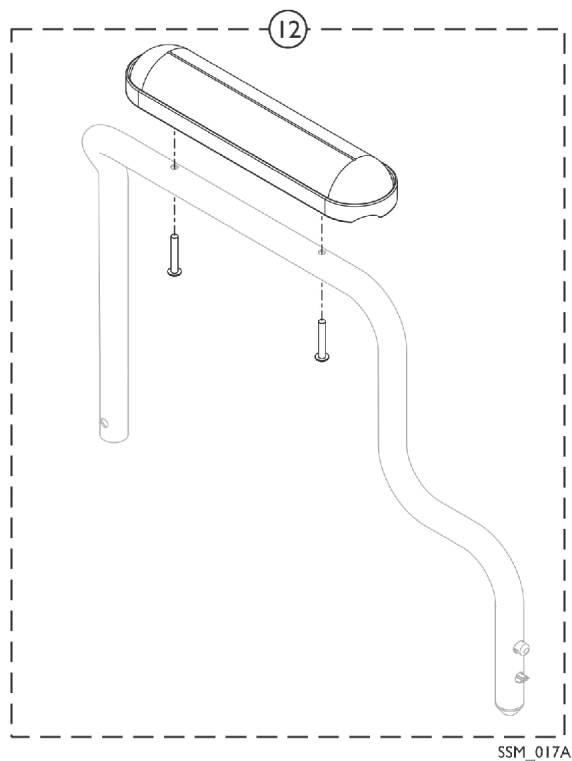
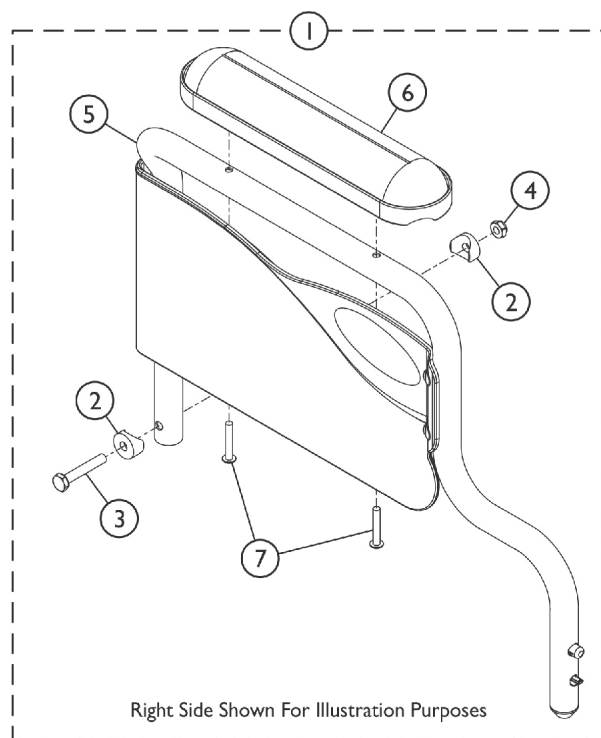
Back Cane and Hardware



Back Cane and Hardware

Item Number	Note	Part Number	Description	Quantity Per	
				Package	Assembly
1	A,B	1185212	Back Cane w/ Handgrip Assembly, Silver Vein - Right/Left (15 - 17" H)	1	1
2			Back Cane, Silver Vein - Right/Left (15 - 17" H)	1	1
3			Grip, Hand (6")	1	1
4			Screw, Hex Head (M6 x 35)	1	1
5			Turn Knob	1	1
NOTE: A - Includes items 2-5. Back Cane assembly is interchangeable between the right and left side. B - The Veranda 3000 has a non-adjustable 16" back height. The Veranda 3000 Side Frame has only one hole to attach the Back Cane. The Veranda 4000 Side Frame has 3 holes to accommodate the adjustable back height.					

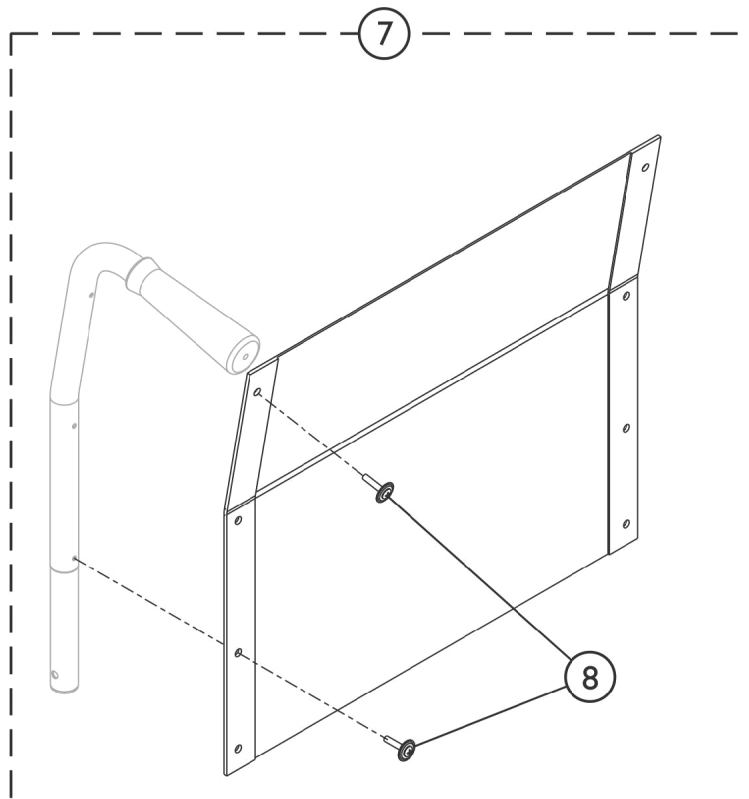
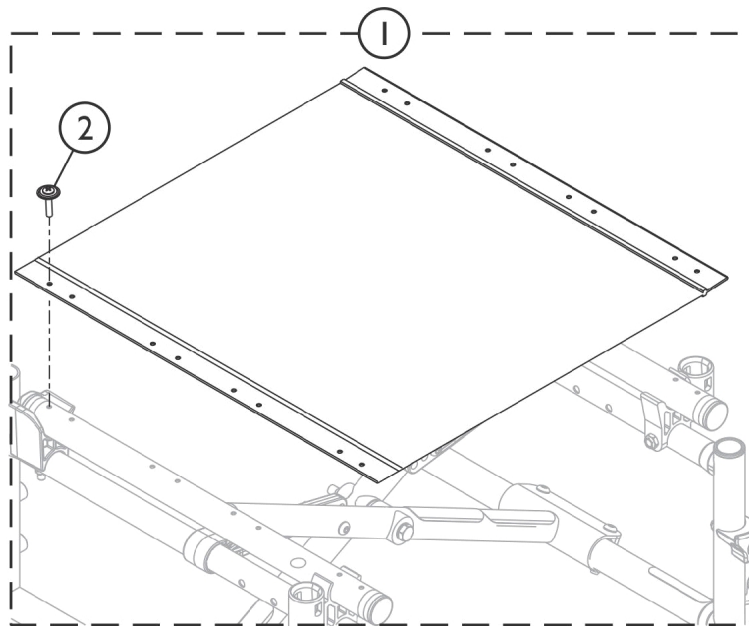
Arms - Space Saver Fixed Height



Arms - Space Saver Fixed Height

Item Number	Note	Part Number	Description	Quantity Per	
				Package	Assembly
1	A	1573725	Kit, Armrest, Fixed, Desk Length, Silver Vein - Right	1	1
2			Spacer, Coved (1/4 x 3/4 x 11/32")	1	2
3			Screw, Hex Head (1/4-20 x 1-1/2")	1	1
4			Locknut (1/4-20)	1	1
5			Armrest Assembly, Fixed, Desk Length, Silver Vein - Right	1	1
6			Pad, Arm, Desk Length	1	1
7			Screw, Phillips Pan Head (#10-32 x 1-1/8")	1	2
1	A	1573726	Kit, Armrest, Fixed, Desk Length, Silver Vein - Left	1	1
2			Spacer, Coved (1/4 x 3/4 x 11/32")	1	2
3			Screw, Hex Head (1/4-20 x 1-1/2")	1	1
4			Locknut (1/4-20)	1	1
5			Armrest Assembly, Fixed, Desk Length, Silver Vein - Left	1	1
6			Arm Pad, Desk Length w/ Law Label	1	1
7			Screw, Phillips Pan Head (#10-32 x 1-1/8")	1	2
12		1573724	Arm Pad w/ Screws Assembly, Desk Length, Black	1	1
NOTE: A - Includes items 2-7. Specify U67 Black for the arm pad upholstery.					

Upholstery - Seat, Back and Hardware



SSM_018A

Upholstery - Seat, Back and Hardware

Item Number	Note	Part Number	Description	Quantity Per	
				Package	Assembly
1	A	See Chart	Item #1 - Upholstery - Seat and Hardware	1	1
2		1041541	Package, Screw Phillips Csunk Oval Head w/ Washer (#10-16 x 7/8") (12 ea.)	12	1
7	B	See Chart	Item #7 - Upholstery - Back and Hardware	1	1
8		1091073	Hardware, Upholstery - Screws w/ Washers (Pkg. of 6)	6	1
NOTE: A - Includes item 2. B - Includes item 8.					

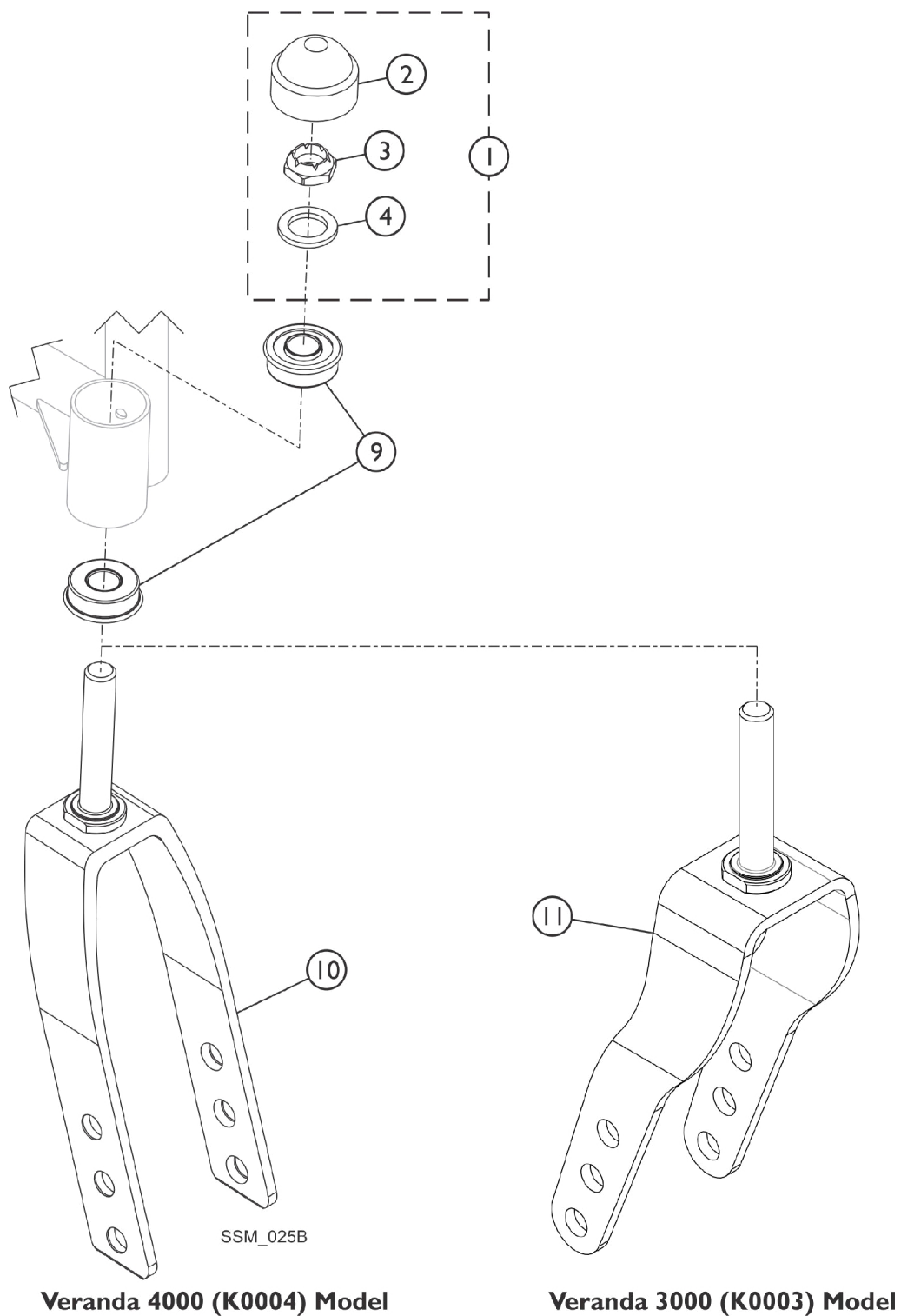
Item #1 - Upholstery - Seat and Hardware

Chair Dimensions	Part Number
16" W x 16" D	1127531
18" W x 16" D	1127533
18" W x 18" D	1127534
20" W x 16" D	1127535
20" W x 18" D	1127536

Item #7 - Upholstery - Back and Hardware

Chair Width	Part Number
16" W	1127480
18" W	1127482
20" W	1127484

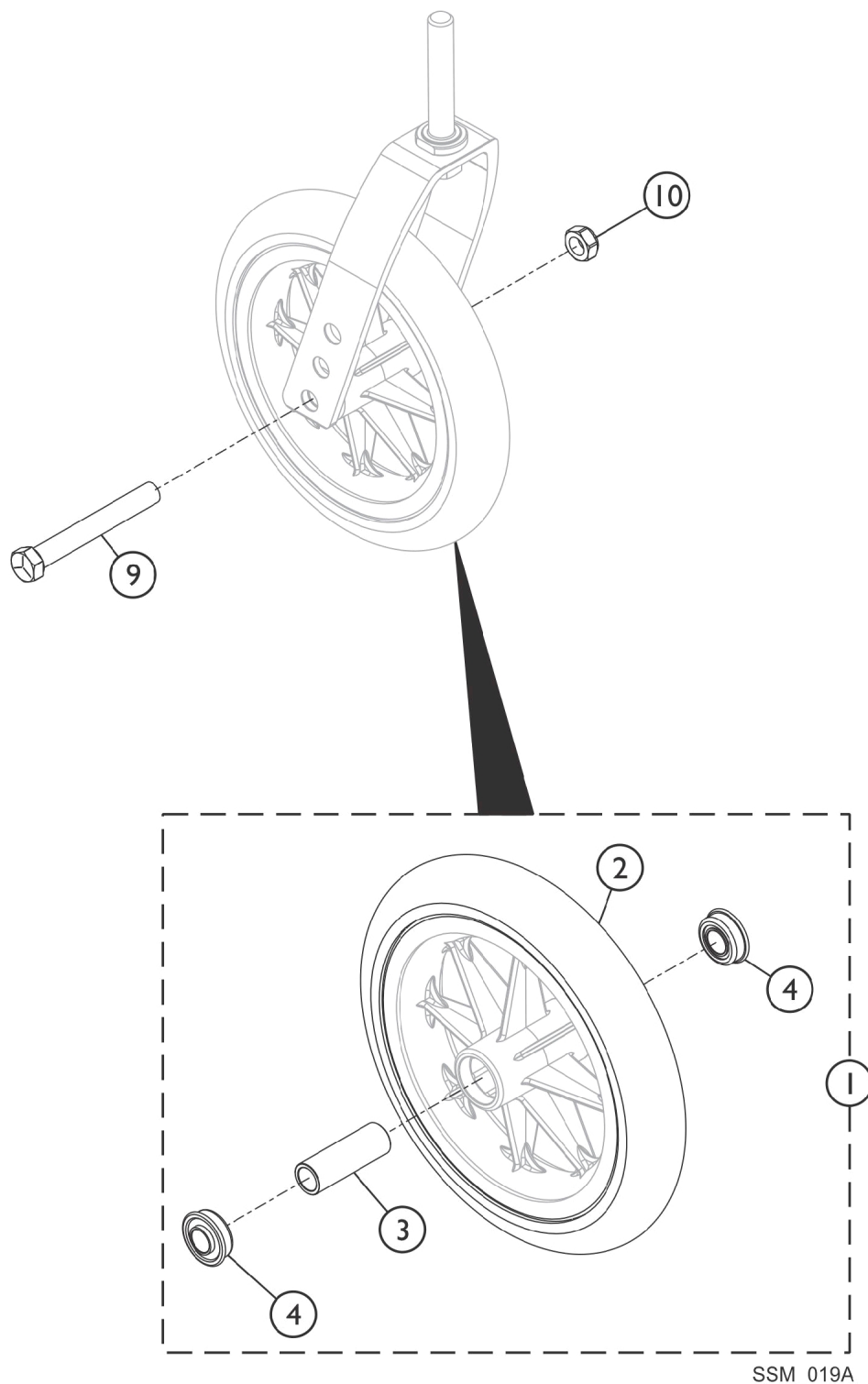
Forks and Hardware



Forks and Hardware

Item Number	Note	Part Number	Description	Quantity Per	
				Package	Assembly
1	A	1033202	Kit, Fork Hardware (Pair)	1	1
2			Cap, Head Tube, Black	1	2
3			Locknut (1/2-20)	1	2
4			Washer, Nylon (5/8 x 1 x 3/32")	1	2
9		1001801	Bearing, Flange (1/2")	1	2
10	B	1056640	Fork and Stem Assembly, Black (8" & 6 x 2" Caster)	1	1
11	C	1111305	Fork and Stem Assembly, Steel, Black (8")	1	1
NOTE: A - Includes Items 2 thru 4. B - Used for the Veranda (K0004) model C - Used for the Veranda (K0003) model					

Front Casters and Mounting Hardware

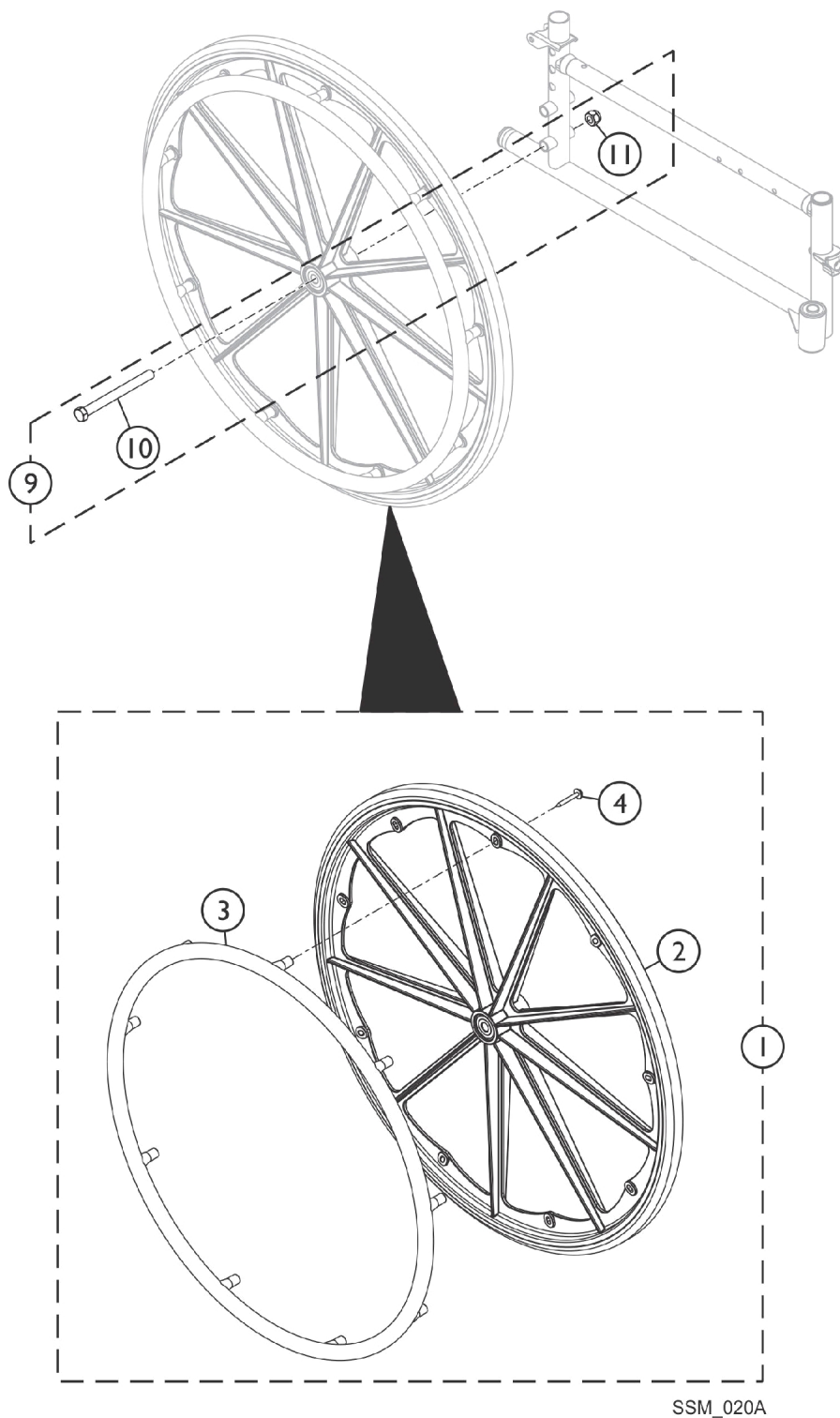


Front Casters and Mounting Hardware

Item Number	Note	Part Number	Description	Quantity Per	
				Package	Assembly
1	A	1058649	Wheel Assembly, Composite Urethane (8" x 1-1/4")	1	1
2		1038157	Tire, Urethane, Dark Grey (8" x 1-1/4")	1	1
3		1020592	Spacer, Bearing (7/16 x 5/8 x 1-3/4")	1	1
4		1040102	Bearing (7/16")	1	2
9		57667P007	Screw, Hex Head (7/16-20 x 3-1/4")	1	1
10		20225X000	Locknut (7/16-20)	1	1

NOTE: A - Includes items 2-4. Invacare recommends front casters be ordered in pairs.

Rear Wheel, Handrim and Mounting Hardware

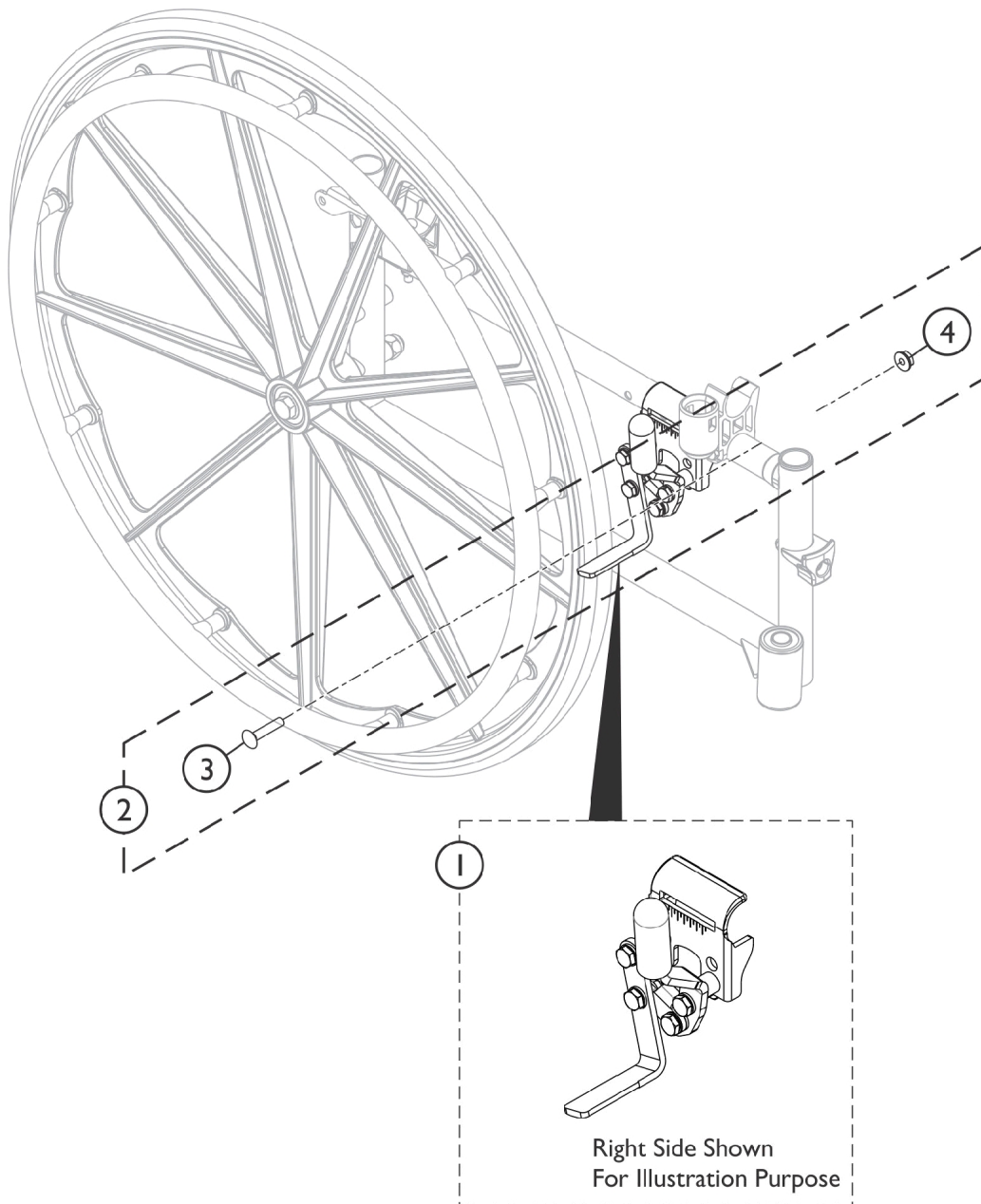


SSM_020A

Rear Wheel, Handrim and Mounting Hardware

Item Number	Note	Part Number	Description	Quantity Per	
				Package	Assembly
1	A	1152229	Kit, Wheel 24", 7/16" Axle, Composite Urethane - 9 PT. Plastic Coated Handrim	1	1
2			Wheel Assembly, Composite, Corded Urethane (24")	1	1
3			Handrim, Composite, 9 PT., Black (24" wheel)	1	1
4			Hardware, Handrim Attaching - 9 PT.	9	1
9	B	1570524	Kit, Rear Wheel Mounting Hardware	1	1
10			Screw, Hex Head (7/16-20 x 4-1/2")	1	1
11			Locknut (7/16-20)	1	1
NOTE: A - Includes items 2-4. B - Includes items 10 and 11.					

Wheel Lock and Mounting Hardware

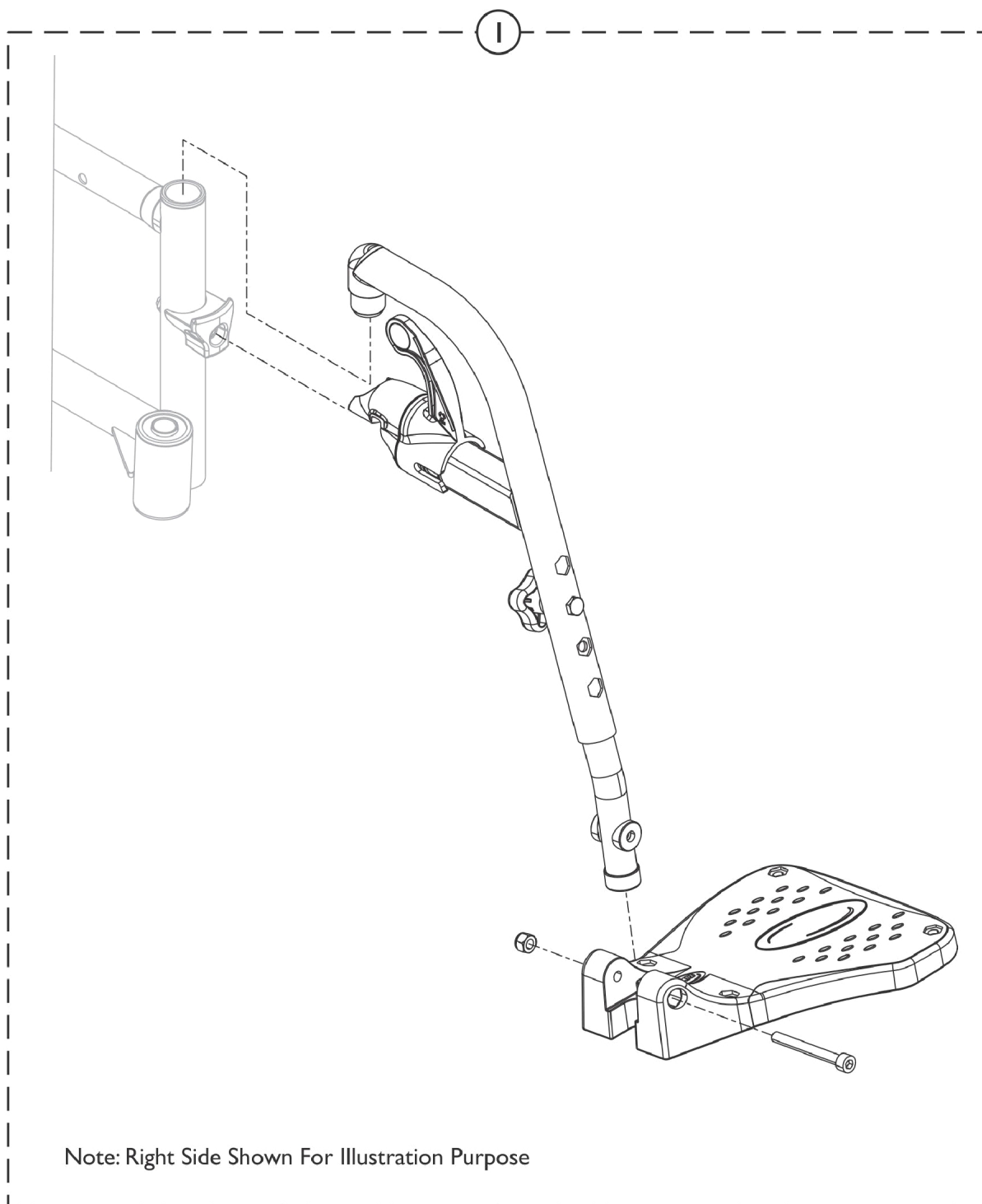


SSM_021A

Wheel Lock and Mounting Hardware

Item Number	Note	Part Number	Description	Quantity Per	
				Package	Assembly
1	A	1101452	Wheel Lock Assembly, Push to Lock, Black - Right	1	1
1		1101453	Wheel Lock Assembly, Push to Lock, Black - Left	1	1
2		1017677	Kit, Hardware, Wheel Lock (Pair)	1	1
3			Bolt, Carriage (1/4-20 x 1-1/4")	1	2
4			Nut, Hex Flang (1/4-20)	1	2
NOTE: A - Includes items 3 and 4.					

Front Riggings - Footrest

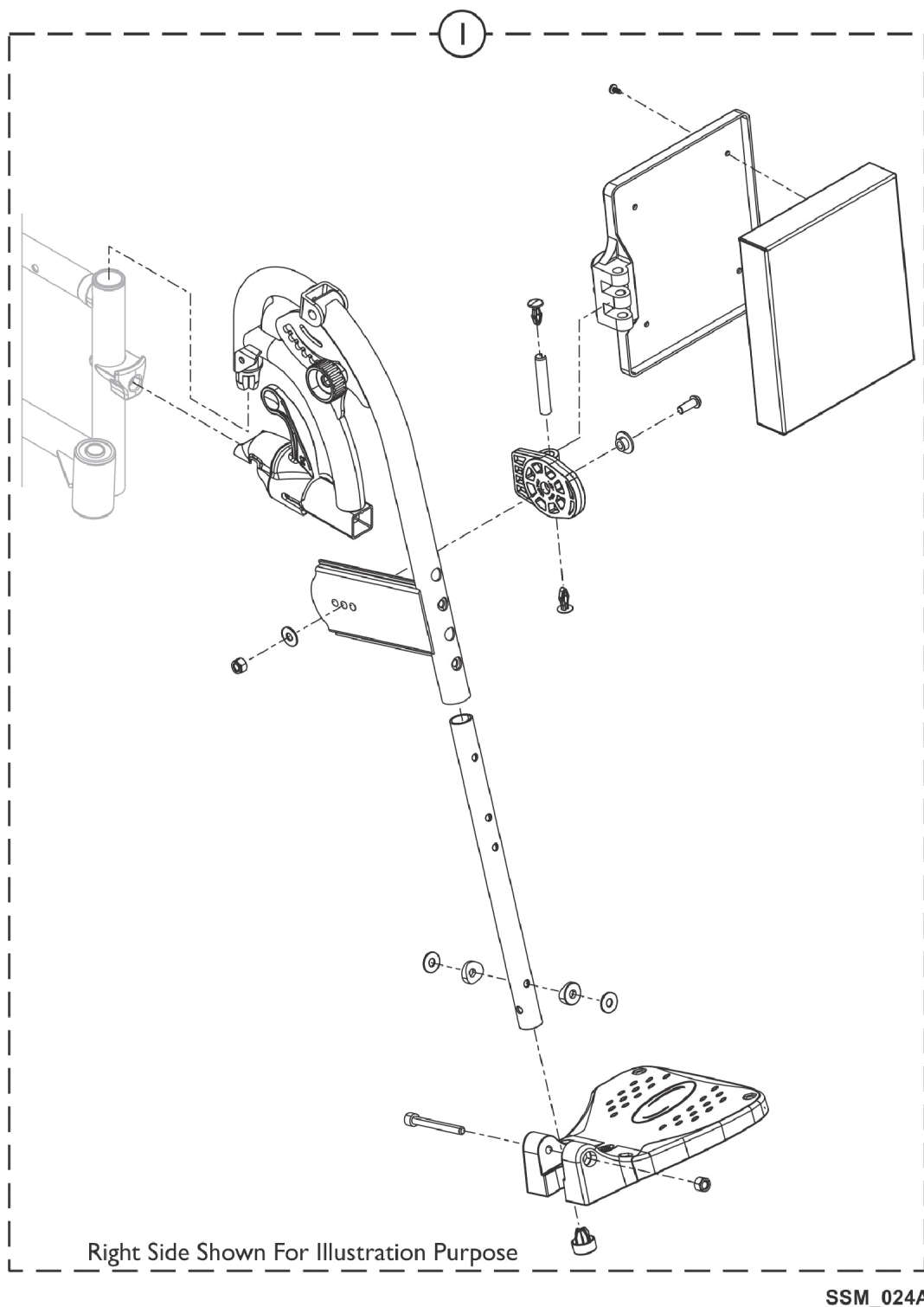


SSM_022A

Front Riggings - Footrest

Item Number	Note	Part Number	Description	Quantity Per	
				Package	Assembly
1		1180326	Footrest w/ Composite Footplate Assembly (Pair)	1	1

Front Riggings - Legrest, Calf Pad and Mounting Hardware



Front Riggings - Legrest, Calf Pad and Mounting Hardware

Item Number	Note	Part Number	Description	Quantity Per	
				Package	Assembly
1		1180327	Legrest w/ Composite Footplate Assembly, Black (Pair)	1	1

Accessories

Description	Part Number
Rear Anti-Tipper (Pair)	1360 See Note(s) A
Heel Loop (Pair)	1492315 See Note(s) B
NOTE: A - Includes the Rear Anti-Tippers and Anti-Rattle Plugs for the Lower Frame Tube. B - Includes the Heel Loops w/ Attaching Hardware for Legrest or Footrest.	

Invacare Corporation

www.invacare.com



Yes, you can.

One Invacare Way
Elyria, Oh USA
44036-2125
800-333-6900

Technical Support
800-832-4707
Customer Service
800-333-6900

Literature Orders
800-333-6900

© 2019 Invacare Corporation. All rights reserved. Republication, duplication or modification in whole or in part is prohibited without prior written permission from Invacare. Trademarks are identified by ™ and ®. All trademarks are owned by or licensed to Invacare Corporation or its subsidiaries unless otherwise noted. (Revised 5/28/19)

Form No. 13-510