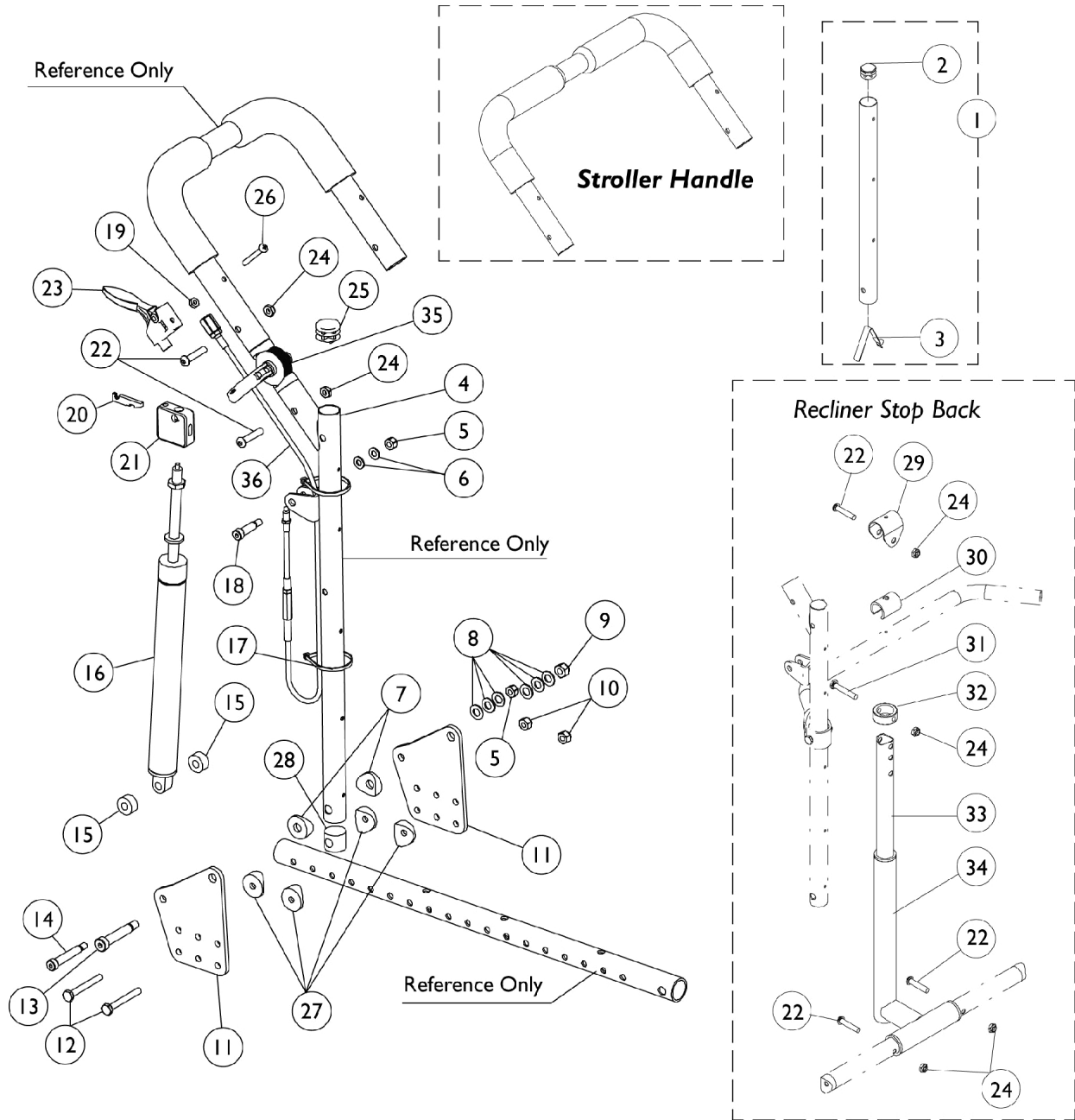


Recliner Back Assembly



Recliner Back Assembly

Item Number	Note	Part Number	Description	Quantity Per	
				Package	Assembly
1		1070998	Headrest Extension Tube Assembly, Black - Right	1	1
1		1070999	Headrest Extension Tube Assembly, Black - Left	1	1
2		1027095	Plug Button, Black (7/8")	1	2
3		1024713	Spring, Torsion w/ Button	1	2
4		1076527-NLA	NLA - Cane, Back, Recliner, Black - Right	1	1
4		1076528-NLA	NLA - Cane, Back, Recliner, Black - Left	1	1
5		1025736	Locknut (1/4-20)	1	4
6		1026907	Washer (1/4 x 1/2 x 1/16")	1	4
7		1071729-NLA	NLA - Spacer, Coved (3/8 x 1 x 9/16")	1	4
8		1025704	Washer, Flat (5/16 x 5/8 x 1/16")	1	12
9		1026158	Locknut (5/16-18)	1	2
10		1065362	Locknut (1/4-28)	1	4
11		1071739-NLA	NLA - Bracket, Recliner, Black	1	4
12		1055349	Screw, Hex Head (1/4-28 x 2")	1	4
13		1071737-NLA	NLA - Screw, Shoulder Hex Socket Head (3/8" x 1-5/8", 5/16-18)	1	2
14		1071736	Screw, Shoulder Hex Socket Head (5/16" x 1-5/8", 1/4-20)	1	2
15		1069736-NLA	NLA - Bushing (3/8")	1	4
16		1076526	Cylinder, Recliner	1	2
17		1021260	Tie Wrap (5-5/8" L)	1	4
18		1050153	Screw, Shoulder Hex Socket Head (5/16 x 7/8", 1/4-20)	1	2
19		1025735	Locknut (#10-32)	1	2
20		1071735	Lever, Cylinder Release	1	2
21		1071718	Bracket, Cylinder Release, Black	1	2
22		1055309	Screw, Socket Button Head (1/4-28 x 1-1/4")	1	7
23		1078318	Handle, Cable Release, Black	1	2
24		1025765	Locknut (1/4-28)	1	6
25		1029501	Plug Button, Black (1")	1	2
26		1026107	Screw, Phillips Pan Head (#10-32 x 1-3/8")	1	2
27		40157X020	Spacer, Coved (1/4 x 1 x 9/16")	1	8
28		1081265	Plug	1	2
29		1083926	Clamp, Black	1	1
30		1083905-NLA	NLA - Bushing	1	1
31		1055347-NLA	NLA - Screw, Hex Head (1/4-28 x 1-1/2")	1	1
32		1083906-NLA	NLA - Ring, Stop	1	1
33		1083928	Tube, Upper, Black	1	1
34		1082635-NLA	NLA - T-Tube, Lower, Black	1	1
35	A	1114690-NLA	NLA - Hardware, Stroller Handle Hinge	2	1
36		1082638	Cable Release Assembly	1	2

NOTE: A - Includes items 22 and 24.