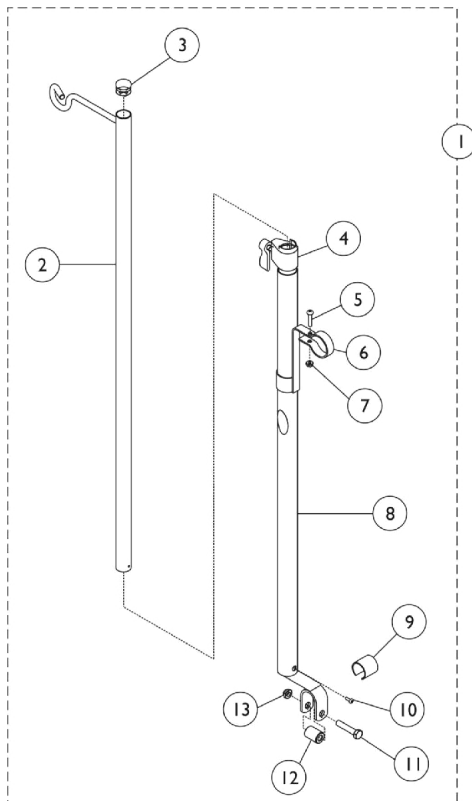


I.V. Rod and Bracket (2218) - Non-Recliner



Item Number	Note	Part Number	Description	Quantity Per	
				Package	Assembly
1	A	1101760-NLA	NLA - Rod, I.V., Telescoping (Model 2218)	1	1
2		1017623	Socket, I.V.	1	1
3		1027095	Plug Button, Black (7/8")	1	1
4		12592X000-NLA	NLA - Adjustment Lock Assembly, Chrome	1	1
5		16718X000-NLA	NLA - Screw, Phillips Pan Head (#10-32 x 7/8")	1	1
6		1020082	Bracket, Mounting, Chrome	1	1
7		60279X003	Locknut (#10-32)	1	1
8		1017623	Socket, I.V.	1	1
9	B	1023618	Insert, Guide Tube, Black (1" Long)	1	1
10		21243X000-NLA	NLA - Screw, Phillips Pan Head (#6-20 x 3/8")	1	1
11		11239X001	Screw, Hex Head (5/16-24 x 1-1/2")	1	1
12		1017843-NLA	NLA - Spacer, Chrome (5/16 x 11/16 x 15/16")	1	1
13		60264X001	Locknut (5/16-24)	1	1
	C	1114827	Instruction Sheet	1	1

NOTE: A - Includes items 2-13 and instruction sheet.
 B - Used on Fixed Front Frames Only.
 C - Not shown.