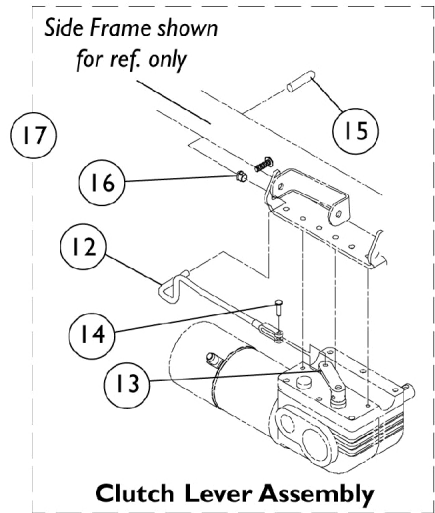
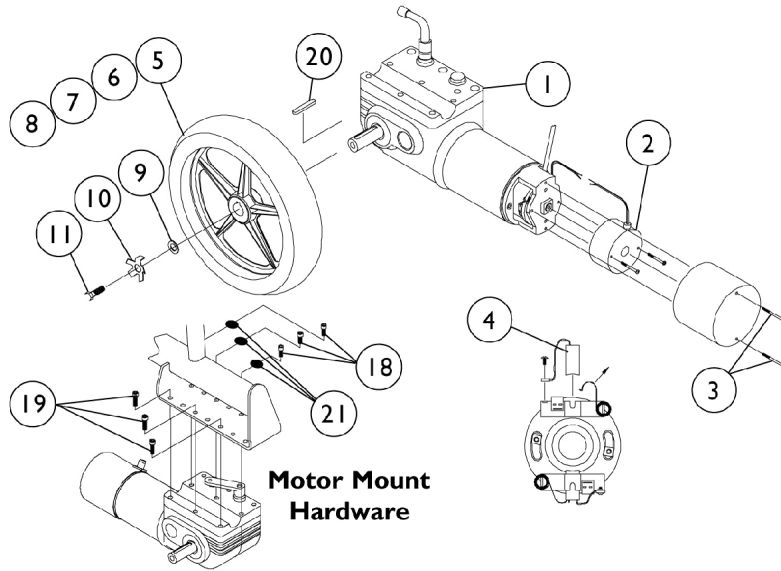


Drive Wheel, 2-Pole Motor & Gearbox (12-1/2 x 2-1/4") (Ranger II Basic, Excel and R2 jr.)



Drive Wheel, 2-Pole Motor & Gearbox (12-1/2 x 2-1/4") (Ranger II Basic, Excel and R2 jr.)

Item Number	Description	Part Number
1	Motor and Gearbox - Right	1071593-NLA
1	Motor and Gearbox - Left	1071594-NLA
2	Brake Repair Kit	1055872-NLA
3	Brake Cover with Screws (Pair)	1038361-NLA
4	Brushes (Pair)	561-005-NLA See Note(s) C
5	Drive Wheel, Foam Fill (12-1/2") with Locking Tab	1064177
	Drive Wheel, Pneumatic (12-1/2") with Locking Tab	1064178-NLA
6	Tire (12-1/2 x 2-1/4")	1011524
7	Flat Free Insert	1073936-NLA See Note(s) A
8	Tube (12-1/2 x 2-1/4")	1011525
9	Washer (21/64 x 53/64 x 7/64")	1079247
10	Washer, Locking Tab (Pair)	1064179
11	Screw, Hex Head (M8 x 20MM) (Pkg. of 25)	7930322-NLA
12	Clutch Lever - Right	1098712-NLA See Note(s) B
	Clutch Lever - Left	1098713-NLA See Note(s) B
13	Bracket, Clutch Lever	1071567-NLA
14	Pin, Clevis	1071568
15	Tip, Plastic	1040060
16	Bushing, Snap	1071562-NLA
17	Clutch Lever Assembly - Right	1074114-NLA
	Clutch Lever Assembly - Left	1074135-NLA
18	Screw, Socket Head (M6 x 15MM)	1080713-NLA
19	Screw, Socket Head (M6 x 35MM)	1080712-NLA
20	Key	1023264
21	Washer, Star (1/4")	10513X000-NLA

NOTE: A - As of 10/20/99 the "solid" flat free insert was replaced by a "foam fill" process. When a flat free insert is requested, a complete wheel must be ordered.

B - Short end of Clutch Lever was lengthened from 2" to 2-3/4" long as of 12/1/00. Replace in pairs for chairs made before 12/11/00.

C - 561-005 are internal brushes and do not use Caps.

NOTE: Light Duty, 250-S models use long cap motors.