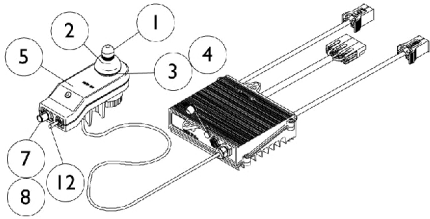


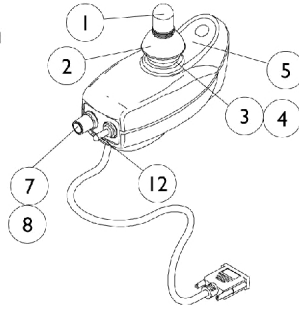
MKIV Joysticks

RII, RX, A, A+, TCHJOY

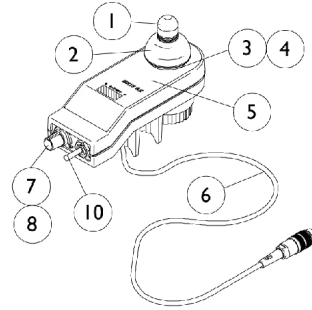


1080723NLA
RII Joystick/Controller
Before 5/1/00

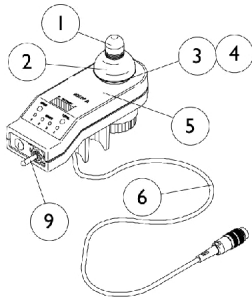
⚠ For chairs made before 5/1/00,
the following must be ordered:
RII Joystick part # (1092610)
RII Retro Controller part # (1095269)
Remote Programmer part # (1109091)



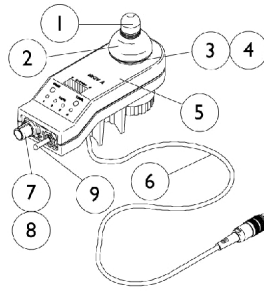
1092610
RII Joystick
After 4/30/00



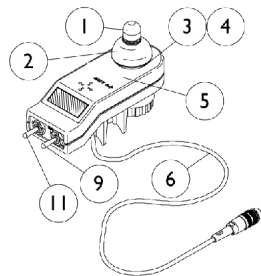
1038603
RX Joystick



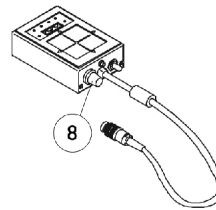
1038604
A Joystick
Before 9/1/96



1065944
A Joystick
After 8/31/96



1038608
A+ Joystick



1095289
TCHJOY
Touchpad "A"
Joystick

MKIV Joysticks RII, RX, A, A+, TCHJOY

| Item Number | Note | Part Number | Description | Quantity Per | |
|-------------|------|-------------|-------------------------------------|--------------|----------|
| | | | | Package | Assembly |
| | A,C | 1080723-NLA | NLA - Joystick/Controller, MKIV RII | 1 | 1 |
| | B | 1095269-NLA | NLA - Controller, MKIV RII, Retro | 1 | 1 |
| | B | 1109091-NLA | NLA - Programmer, Remote | 1 | 1 |
| | B | See Chart | MKIV Joysticks | 1 | 1 |

NOTE: A - For chairs made before 5/1/00, the following must be ordered, RII Joystick part #(1092610), RII Retro Controller Part #(1095269) and Remote Programmer part #(1109091)
 B - Not Shown
 C - For joystick inductive and switch components, refer to chart under RII joystick assembly part number 1092610

| Item Number | Description | RII | RX | A | | A+ | TCHJOY |
|---------------|--------------------------|------------------------------|------------------------------|------------------------------|------------------------------|------------------------------|-------------|
| | | | | Before 9/1/96 | After 8/31/96 | | |
| See Pictorial | Joystick Assembly | 1092610-NLA | 1038603-NLA | 1038604-NLA | 1065944-NLA | 1038608-NLA | 1095289-NLA |
| 1 | Knob, Joystick | 1040217 | 1040217 | 1040217 | 1040217 | 1040217 | N/A |
| 2 | Skirt, Joystick | 1040218 | 1040218 | 1040218 | 1040218 | 1040218 | N/A |
| 3 | Inductive, Joystick | 1036764-NLA See Note(s) B | 1036764-NLA See Note(s) C | 1036764-NLA See Note(s) B | 1036764-NLA See Note(s) C | 1036764-NLA See Note(s) B | N/A |
| 3 | Inductive, Joystick | N/A | 1104397-NLA See Note(s) D | N/A | 1104397-NLA See Note(s) D | N/A | N/A |
| 4 | Boot, Joystick | 50000X364-NLA LA | 50000X364-NLA LA | 50000X364-NLA LA | 50000X364-NLA LA | 50000X364-NLA LA | N/A |
| 5 | Overlay, Joystick Decal | 1049692-NLA See Note(s) A | 1038642-NLA | 1040190-NLA | 1040190-NLA | 1036776-NLA | N/A |
| 6 | Cable Assembly | N/A See Note(s) A | 1036750-NLA See Note(s) C | 1036750-NLA See Note(s) B | 1036750-NLA See Note(s) C | 1036750-NLA See Note(s) B | N/A |
| 6 | Cable Assembly | N/A | 1104205-NLA See Note(s) D | N/A | 1104205-NLA See Note(s) D | N/A | N/A |
| 7 | Potentiometer, Speed | 1040225-NLA See Note(s) B | 1040225-NLA See Note(s) C | N/A | 1040225-NLA See Note(s) C | N/A | N/A |
| 7 | Potentiometer, Speed | N/A | 1115518-NLA See Note(s) D | N/A | 1115518-NLA See Note(s) D | N/A | N/A |
| 8 | Knob, Potentiometer | 1025516-NLA | 1025516-NLA | N/A | 1025516-NLA | N/A | 1025516-NLA |
| 9 | Switch, On/Off Momentary | N/A | N/A | 1040185-NLA See Note(s) B | 1040185-NLA See Note(s) C | 1040185-NLA See Note(s) B | N/A |
| 9 | Switch, On/Off Momentary | N/A | N/A | N/A | 1115523-NLA See Note(s) D | N/A | N/A |
| 10 | Switch, Off/ 1-2 | N/A | 1038627-NLA See Note(s) C | N/A | N/A | N/A | N/A |

MKIV Joysticks

RII, RX, A, A+, TCHJOY

| Item Number | Description | RII | RX | A Before 9/1/96 | A After 8/31/96 | A+ | TCHJOY |
|-------------|------------------------|------------------------------|------------------------------|--------------------|--------------------|------------------------------|--------|
| 10 | Switch, Off/ 1-2 | N/A | 1115521-NLA See Note(s) D | N/A | N/A | N/A | N/A |
| 11 | Switch, Program | N/A | N/A | N/A | N/A | 1040186-NLA See Note(s) B | N/A |
| 12 | Switch, Toggle SPDT | 1010042-NLA See Note(s) B | N/A | N/A | N/A | N/A | N/A |

NOTE: A - Cable assembly and joystick overlay decal for RII joystick before 10/01/02 and after 9/30/02 are not available.
 B - Item requires soldering
 C - Before 10/01/02 item requires soldering
 D - After 9/30/02 item has a non-solder connector.