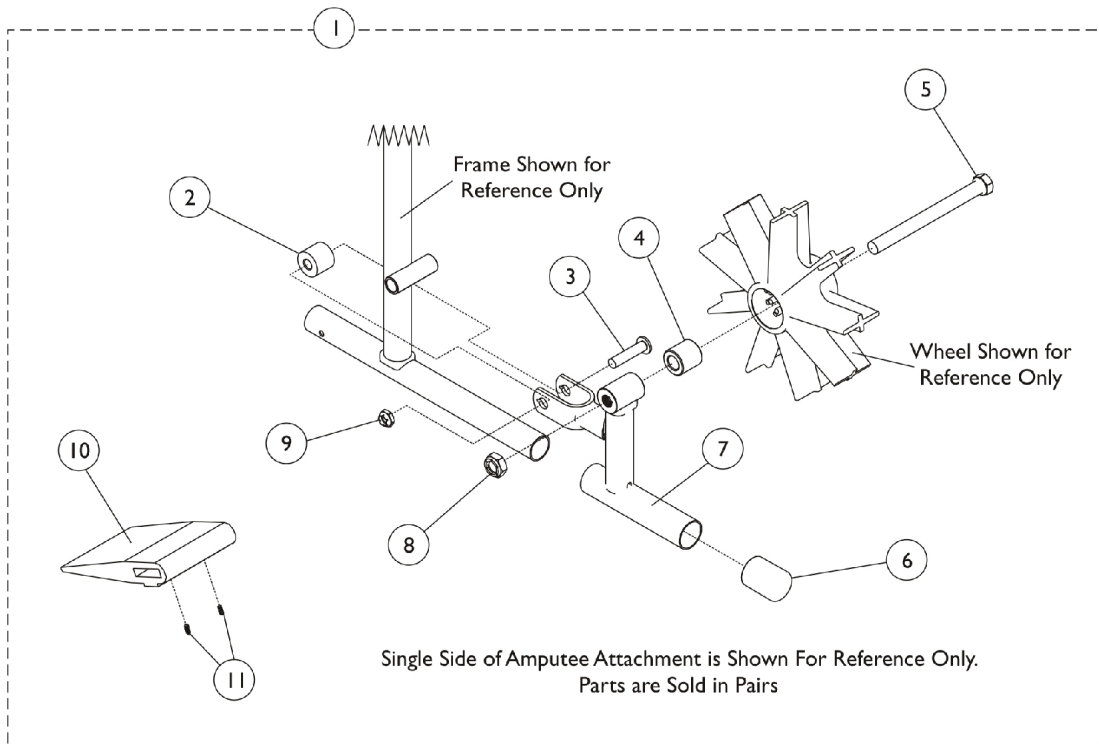


Amputee Attachment - T9357L

EX - Available After 2/15/99



Item Number	Note	Part Number	Description	Quantity Per	
				Package	Assembly
1	A,B	1085034-NLA	NLA - Attachment, Amputee	1	1
1	A,C	1085035-NLA	NLA - Attachment, Amputee	1	1
2		47324X011	Bushing, Pivot (5/16 x 7/8 x 3/4")	1	2
3		11232X009	Bolt, Lug (5/16-24 x 1-3/8")	1	2
4	C	1026101	Spacer (7/16 x 5/8 x 3/16")	1	2
4	B	47183X037-NLA	NLA - Spacer (1/2 x 7/8 x 7/8")	1	2
5	C	47203X024-NLA	NLA - Bolt, Hex Head (7/16-20 x 4")	1	2
5	B	47203X025	Bolt, Hex Head Cap (7/16-20 x 4-3/4")	1	2
6		1016346	Cap, End, Tube, Black (7/8")	1	2
7		1083126-NLA	NLA - Bracket, Amputee, Chrome - Right	1	1
7		1083127-NLA	NLA - Bracket, Amputee, Chrome - Left	1	1
8		20225X000	Locknut (7/16-20)	1	2
9		1107321	Nut, Low Cap (5/16"-24)	1	2
10		1016979	Spacer, Wheel Lock Shoe (2-7/16")	1	2
11		1008438	Screw, Set Socket Cup Point (#8-32 x 3/16")	1	4

NOTE: A - Includes items 2-11.
 B - Used on Removable Arm Chairs.
 C - Used on Permanent Arm Chairs.