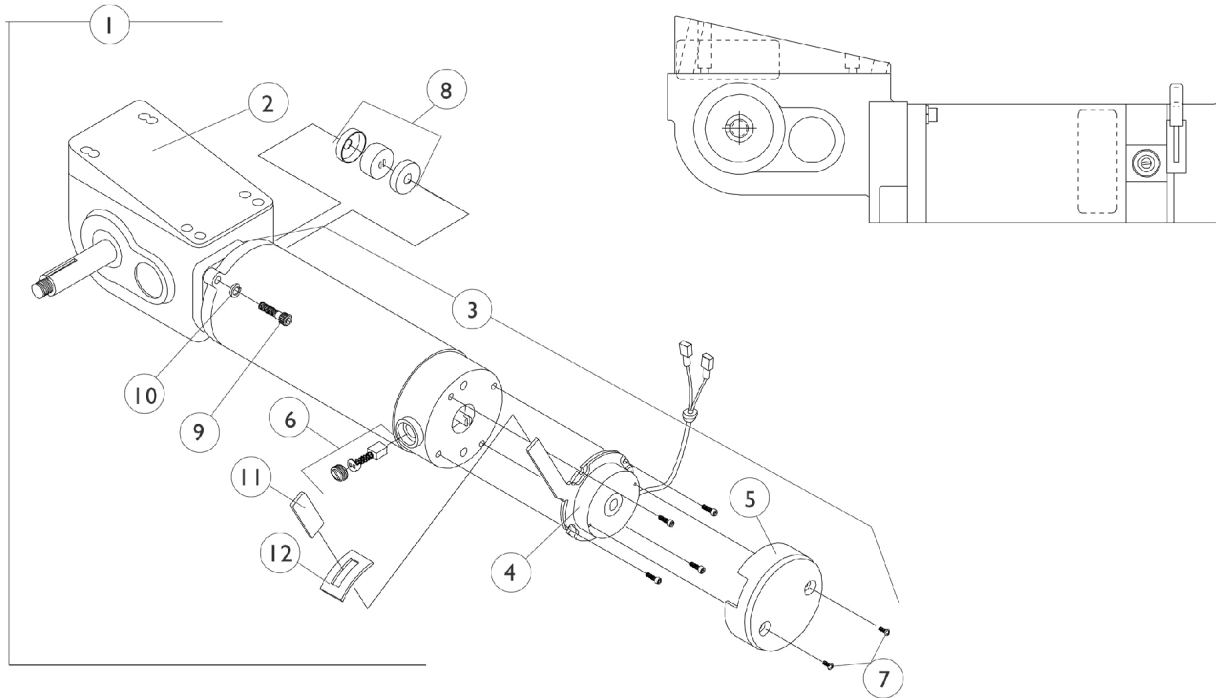


2-Pole Motor and Gearbox Storm Ranger X and H.S.M. Option

NOTE: After 9/14/98 Storm Ranger X changed from 2-pole to 4-pole motors.
NOTE: After 9/14/98 Storm Ranger X with (H.S.M.) was discontinued on-chair



2-Pole Motor and Gearbox Storm Ranger X and H.S.M. Option

NOTE: After 9/14/98 Storm Ranger X changed from 2-pole to 4-pole motors.

NOTE: After 9/14/98 Storm Ranger X with (H.S.M.) was discontinued on-chair

2-Pole Motor and Gearbox

| Item Number | Description | Before 9/15/98 Storm Ranger X RWD-R MWD-L | Before 9/15/98 Storm Ranger X RWD-L MWD-R | Before 9/15/98 Storm Ranger X with H.S.M. Option RWD-R MWD-L | Before 9/15/98 Storm Ranger X with H.S.M. Option RWD-L MWD-R |
|---|--|--|--|---|---|
| 1. | Motor/Gearbox | 1070437-NLA | 1070438-NLA | 1070441-NLA See Note(s) C | 1070442-NLA See Note(s) C |
| 2. | Gear Box | 1070460-NLA | 1070461-NLA | 1070460-NLA See Note(s) C | 1070461-NLA See Note(s) C |
| 3. | Motor Assembly | 1070505-NLA | 1070506-NLA | 1070507-NLA See Note(s) C | 1070508-NLA See Note(s) C |
| 3. | WARR RPLMT - Motor Assembly | 1070505E-NLA | 1070506E-NLA | 1070507E-NLA See Note(s) C | 1070508E-NLA See Note(s) C |
| 4. | Brake Repair Kit | 1064112-NLA | 1064111-NLA | 1064112-NLA | 1064111-NLA |
| 5. | Brake Cover with Screws | 1064113-NLA | 1064114-NLA | 1064113-NLA | 1064114-NLA |
| 6. | Brushes with Caps (Pair) | 1064336-NLA | 1064336-NLA | 1064336-NLA | 1064336-NLA |
| 7. | Screw (#4-40 x 1/4") | 1050305-NLA | 1050305-NLA | 1050305-NLA | 1050305-NLA |
| 8. | NLA - Coupling w/ Cup (1" Diameter) | 5165204-NLA See Note(s) A | 5165204-NLA See Note(s) A | 5165204-NLA See Note(s) A | 5165204-NLA See Note(s) A |
| 8. | NLA - Coupling w/ Cup (1-5/16" Diameter) | 50000X007-NLA See Note(s) B | 50000X007-NLA See Note(s) B | 50000X007-NLA See Note(s) B | 50000X007-NLA See Note(s) B, A |
| 9. | Screw (1/4-20 x 1-1/8") | 1043594 | 1043594 | 1043594 | 1043594 |
| 10. | Lockwasher | 10502X001-NLA | 10502X001-NLA | 10502X001-NLA | 10502X001-NLA |
| 11. | Plastic Tip | 1006490 | 1006490 | 1006490 | 1006490 |
| 12. | Slotted Plate | 1057972-NLA | 1057972-NLA | 1057972-NLA | 1057972-NLA |
| NOTE: A - Coupling with Cup for chairs manufactured before 11/12/05 - Use part # 50000X007 as a direct replacement part. B - After 11/11/01 Coupling with Cup was resized from approximately 1" to 1-5/16" diameter and can be used as a direct replacement for part number 5165204 C - No Longer Available (NLA). Convert to a right and left 4-Pole Motor/Gearbox Assembly part #'s 1085951 & 1085952 | | | | | |