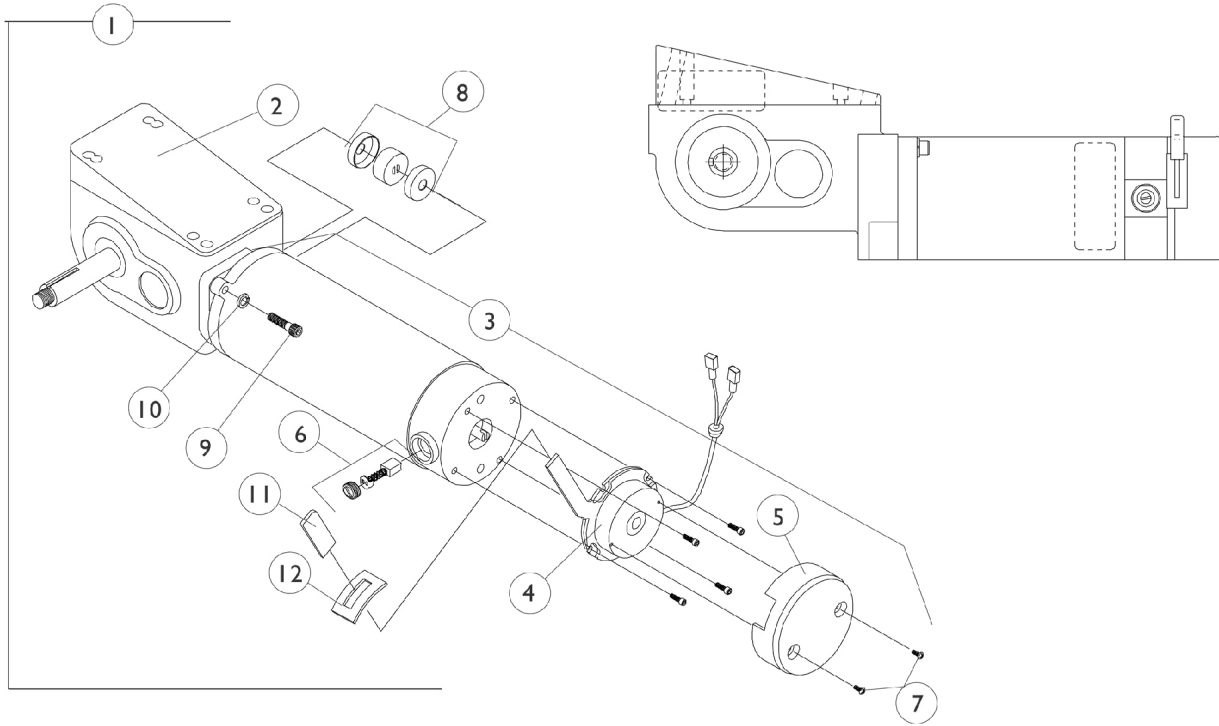


# 2-Pole Motor and Gearbox Storm Arrow and Torque

**NOTE:** After 8/31/98, Storm Arrow and Torque motors changed from 2-pole to 4-pole motors. Storm Arrow heavy duty changed to 4-pole motors after 10/22/98.



## 2-Pole Motor and Gearbox Storm Arrow and Torque

**NOTE: After 8/31/98, Storm Arrow and Torque motors changed from 2-pole to 4-pole motors. Storm Arrow heavy duty changed to 4-pole motors after 10/22/98.**

| Item Number | Description                              | Storm Arrow and Torque Before 9/1/98<br>RWD-R<br>MWD-L | Storm Arrow and Torque Before 9/1/98<br>RWD-L<br>MWD-R | Storm Arrow Heavy Duty Before 10/23/98<br>RWD-R<br>MWD-L | Storm Arrow Heavy Duty Before 10/23/98<br>RWD-L<br>MWD-R |
|-------------|--|--|--|--|--|
| 1.          | Motor/Gearbox                            | 1070441-NLA<br>See Note(s) A, D                        | 1070442-NLA<br>See Note(s) D, A                        | 1070414-NLA<br>See Note(s) A, E                          | 1070415-NLA<br>See Note(s) A, E                          |
| 2.          | Gear Box                                 | 1070460-NLA<br>See Note(s) A, D                        | 1070461-NLA<br>See Note(s) A, D                        | 1070439-NLA<br>See Note(s) A, E                          | 1070440-NLA<br>See Note(s) E, A                          |
| 3.          | Motor Assembly                           | 1070507-NLA<br>See Note(s) A, D                        | 1070508-NLA<br>See Note(s) A, D                        | 1070507-NLA<br>See Note(s) E, A                          | 1070508-NLA<br>See Note(s) A, E                          |
| 3.          | WARR RPLMT - Motor Assembly              | 1070507E-NLA<br>See Note(s) A, D                       | 1070508E-NLA<br>See Note(s) A, D                       | 1070507E-NLA<br>See Note(s) A, E                         | 1070508E-NLA<br>See Note(s) E, A                         |
| 4.          | Brake Repair Kit                         | 1064112-NLA  | 1064111-NLA  | 1064112-NLA  | 1064111-NLA  |
| 5.          | Brake Cover with Screws                  | 1064113-NLA  | 1064114-NLA  | 1064113-NLA  | 1064114-NLA  |
| 6.          | Brushes with Caps (Pair)                 | 1064336-NLA  | 1064336-NLA  | 1064336-NLA  | 1064336-NLA  |
| 7.          | Screw (#4-40 x 1/4")                     | 1050305-NLA  | 1050305-NLA  | 1050305-NLA  | 1050305-NLA  |
| 8.          | NLA - Coupling w/ Cup (1" Diameter)      | 5165204-NLA<br>See Note(s) B                           | 5165204-NLA<br>See Note(s) B                           | 5165204-NLA<br>See Note(s) B                             | 5165204-NLA<br>See Note(s) B                             |
| 8.          | NLA - Coupling w/ Cup (1-5/16" Diameter) | 50000X007-NLA<br>See Note(s) C                         | 50000X007-NLA<br>See Note(s) C                         | 50000X007-NLA<br>See Note(s) C                           | 50000X007-NLA<br>See Note(s) C                           |
| 9.          | Screw (1/4-20 x 1-1/8")                  | 1043594  | 1043594  | 1043594  | 1043594  |
| 10.         | Lockwasher                               | 10502X001-NLA  | 10502X001-NLA  | 10502X001-NLA  | 10502X001-NLA  |
| 11.         | Plastic Tip                              | 1006490  | 1006490  | 1006490  | 1006490  |
| 12.         | Slotted Plate                            | 1057972-NLA  | 1057972-NLA  | 1057972-NLA  | 1057972-NLA  |

NOTE: A - When replacing a motor only gearbox only or motor/gearbox assembly for Storm Torque chairs manufactured before 3/25/98, a pair of motor/gearbox assemblies should be ordered to match.  
 B - Coupling with Cup for chairs manufactured before 11/12/01 - Use part # 50000X007 as a direct replacement part.  
 C - After 11/11/01 Coupling with Cup was resized from approximately 1" to 1-5/16" diameter and can be used as a direct replacement for part number 5165204  
 D - No Longer Available (NLA). Convert to a right and left 4-Pole Motor/Gearbox Assembly part #'s 1085951 & 1085952  
 E - No Longer Available (NLA). Convert to a right and left 4-Pole Motor/Gearbox Assembly part #'s 1086215 & 1086216