

Tracer® IV Wheelchair (After 9/30/03)



Yes, you can.

Parts Catalog Usage Guide

The information contained in this document is subject to change without notice. This catalog contains service parts for Form No. 03-030. If you have any questions regarding this catalog, please contact one of our Customer Service Representatives.

For Customer Service Support Call:

1-800-333-6900

For Faxed In Orders Call:

1-800-678-4682 or

1-440-366-0709

For Technical Service Call:

1-800-832-4707

Literature Can Be Found at:

www.invacare.com or

1-800-828-6272

SYMBOL DEFINITION

Throughout this catalog you will notice letters to draw your attention to specific footnotes which are located at the bottom of the page or below specified charts.

Examples:

A,B,C etc. = Special Comments

NOTE: = General information pertaining to that specific page

NLA = No Longer Available

HARDWARE MEASUREMENTS

The measurements for the hardware will be listed as follows:

Screws, Bolts Diameter X Thread Count/Pitch X Length

Washers Inside Diameter X Outside Diameter X Thickness

Spacers Inside Diameter X Outside Diameter X Length

For your convenience, we have supplied an area for you to list your Invacare Representatives.

| Name | Phone Numbers |
|------|---------------|
| | |
| | |
| | |
| | |
| | |

© 2022 Invacare Corporation, Elyria, Ohio. Invacare, the Medallion Design and Yes you can. are registered trademarks; Tracer is a registered trademark of Invacare Corporation.

TABLE of CONTENTS

| Description | Page Number |
|---|--------------------|
| Accessories - I.V. Rod & Bracket - 2218 | 77 |
| Accessories - Miscellaneous | 81 |
| Accessories - Oxygen Holder - 1497 | 79 |
| Accessories - Solid Seat Insert | 76 |
| Arms - Conventional Adjustable Height - Chrome and Black Finish | 15 |
| Arms - Conventional Adjustable Height - Color Finish | 21 |
| Arms - Conventional Fixed Height Arm - Black Finish | 24 |
| Arms - Conventional Fixed Height Arm - Color Finish | 28 |
| Casters - Front and Mounting Hardware | 31 |
| Crossbraces & Hardware | 7 |
| Forks & Hardware | 33 |
| Frame Finishes, Packaging, Literature and Upholstery Colors | 4 |
| Frames - Side & Hardware | 5 |
| Front Riggings - Bolt Through and Spring Button Kits | 50 |
| Front Riggings - Calf Pads | 47 |
| Front Riggings - Footrest & Legrest Accessories | 48 |
| Front Riggings - Footrest Support Assembly - GT93H Series | 55 |
| Front Riggings - Footrest Support Assembly - T93H Series After 5/15/19 | 53 |
| Front Riggings - Footrest Support Assembly - T93H Series Before 5/16/19 | 51 |
| Front Riggings - Legrest Support - Articulating - AHL4A & AHL4C | 64 |
| Front Riggings - Legrest Support Assembly - GT94H Series | 62 |

TABLE of CONTENTS

| Description | Page Number |
|--|--------------------|
| Front Riggings - Legrest Support Assembly - T94H Series After 5/15/19 | 60 |
| Front Riggings - Legrest Support Assembly - T94H Series Before 5/16/19 | 57 |
| Front Riggings - Pivot/Slide Tube (Black) & Footplates - GT93H/T93H Series and GT94H/T94H Series | 73 |
| Front Riggings - Pivot/Slide Tube with Footplate - AHL4A/C Legrests | 67 |
| Front Riggings - Pivot/Slide Tube with Footplate - T93H Series and T94H Series | 70 |
| Seat Extensions | 9 |
| Upholstery - Back | 13 |
| Upholstery - Seat | 11 |
| Wheel Locks - Disk Style (Before 4/15/07) | 43 |
| Wheel Locks - Link-Pivot Style (After 4/14/07) | 45 |
| Wheels - Non-Projection Handrims - Attaching Hardware | 41 |
| Wheels - Non-Projection Handrims and Attaching Hardware | 38 |
| Wheels - Rear Wheel Hardware | 37 |
| Wheels - Rear Wheels | 35 |

Frame Finishes, Packaging, Literature and Upholstery Colors

NOTE: When adjusting or replacing parts, please refer to your Owner's Manual for assistance.

Frame Finishes

| Color Number | Color | Touch-Up Paint Part Number |
|--------------|-------------|----------------------------|
| 71P | Silver Vein | N/A |

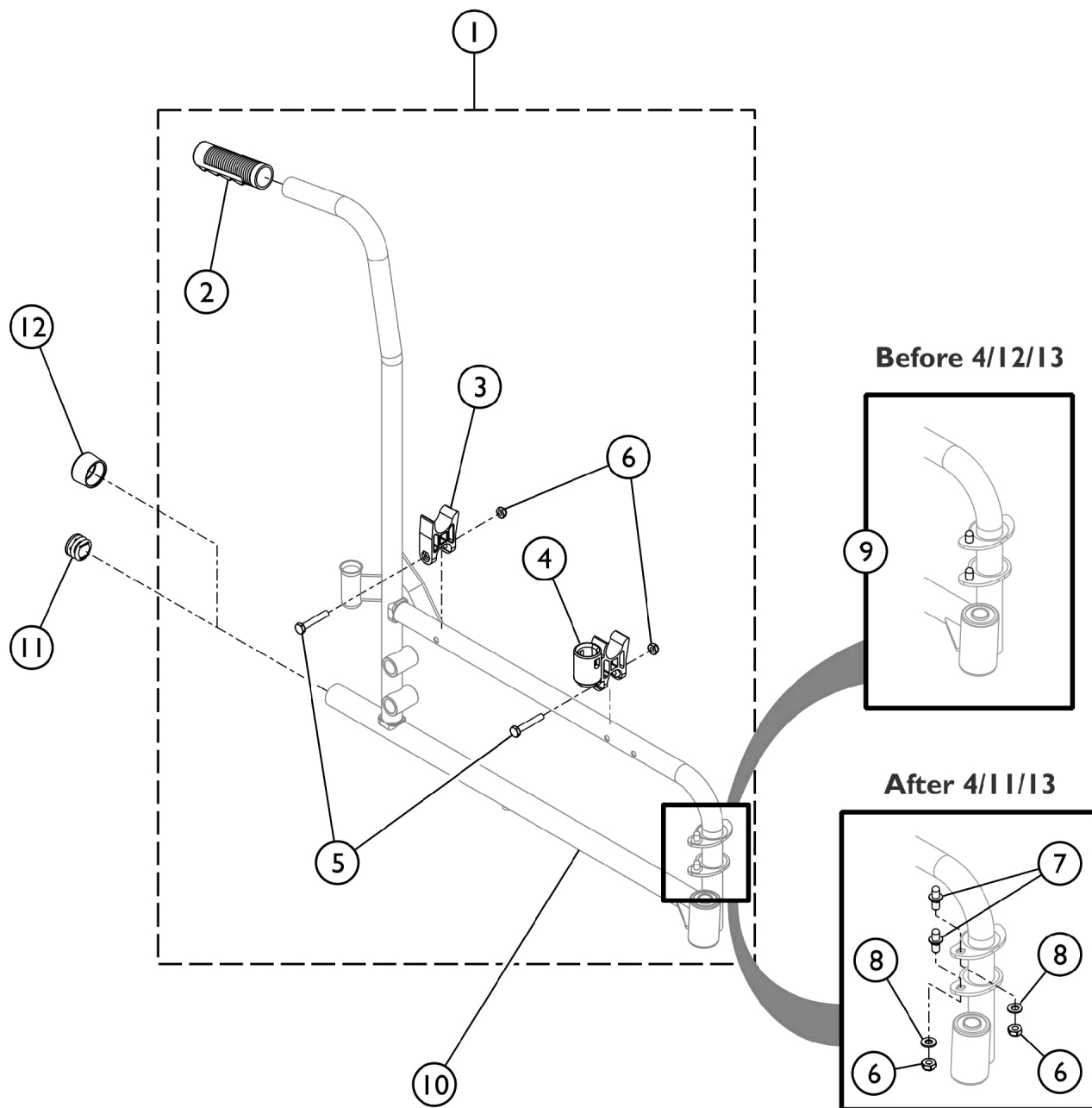
| Part Number | Description |
|--|---------------------------|
| 1110558 | Owner's Manual |
| 1055619 | Carton |
| 40131X041 | Carton Insert |
| 47568X002-NLA | Bag, Poly (34 x 12 x 38") |
| 40131X039-NLA | Insert |
| NOTE: When adjusting or replacing parts, please refer to your Owner's Manual for assistance. | |

Upholstery Colors

| Part Number | Description |
|-------------|---------------|
| U240 | Black Nylon |
| U67 | Black Vinyl |
| U75 | Dove Grey |
| U85 | Dark Blue |
| U86 | Ruby Red |
| U88 | Camel |
| U92 | Sky Blue |
| U550 | Midnight Blue |

Side Frame and Hardware

NOTE: If your chair was built with a serial # starting with "03H" or "03I", please contact an Invacare Parts Specialist for replacement parts at 1-800-333-6900 Ext. 3722.



SSM_043A

Side Frame and Hardware

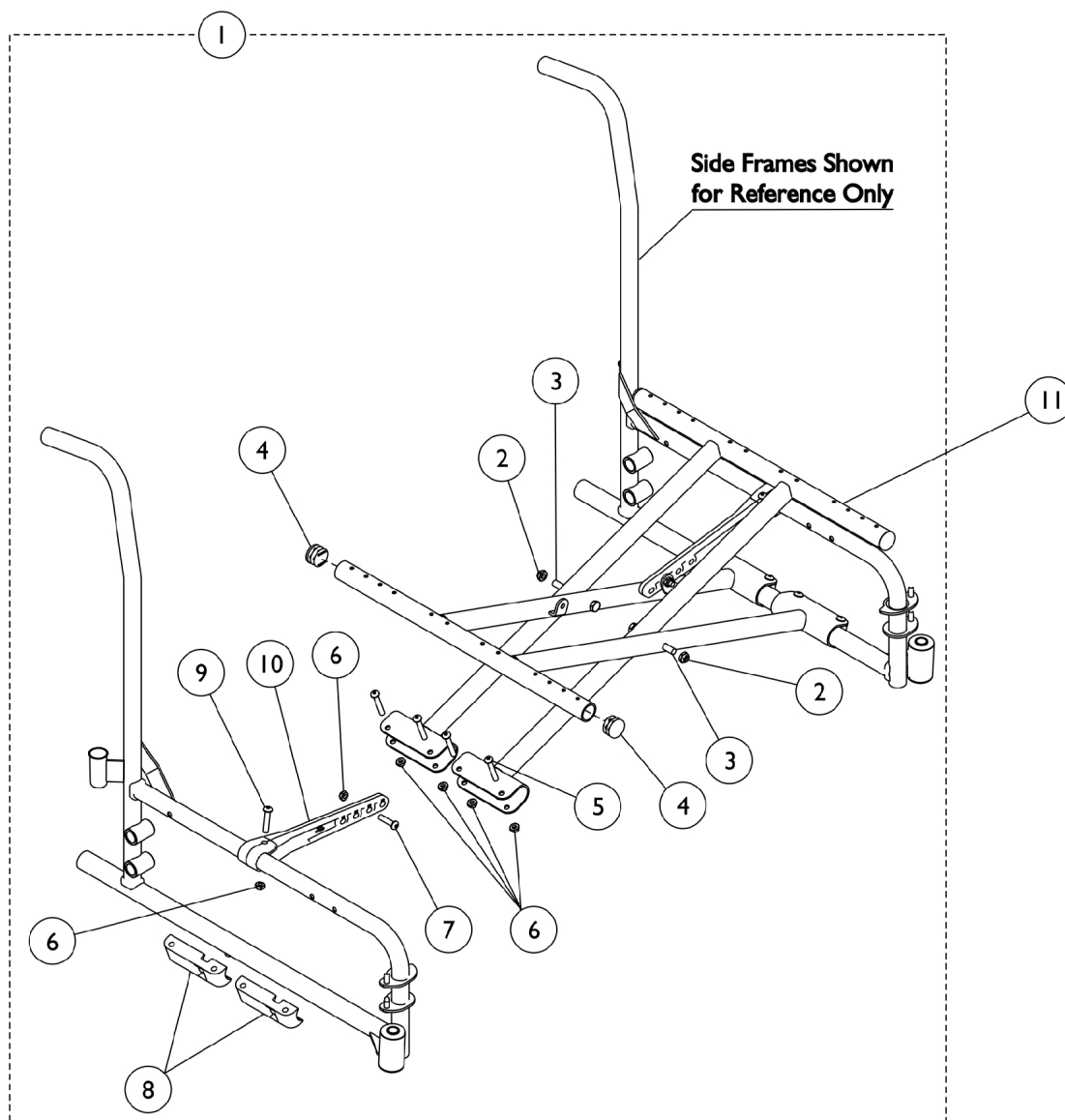
NOTE: If your chair was built with a serial # starting with "03H" or "03I", please contact an Invacare Parts Specialist for replacement parts at 1-800-333-6900 Ext. 3722.

| Item Number | Note | Part Number | Description | Quantity Per | |
|-------------|----------|-------------|--|--------------|----------|
| | | | | Package | Assembly |
| 1 | A | 1193615 | Kit, Side Frame Hardware (Pair) | 1 | 1 |
| 2 | | | Grip, Hand (6") | 1 | 2 |
| 3 | | | H-Block | 1 | 2 |
| 4 | | | H-Block with Socket Cup | 1 | 2 |
| 5 | | | Screw, Hex Head (1/4-20 x 1-1/2") | 1 | 4 |
| 6 | | | Locknut (1/4-20) | 1 | 8 |
| 7 | | | Pin, Hinge | 1 | 4 |
| 8 | | | Washer, Plain (1/4 x 1/2 x 9/16") | 1 | 4 |
| | | | NLA - Bag, Poly Zip-Lip (8-3/4" L x 6" W) | 1 | 1 |
| | | | Instruction Sheet, Hand Grip Service | 1 | 1 |
| 3 | B,C | 1107805 | H-Block | 1 | 2 |
| 4 | | 1109938 | H-Block with Socket Cup | 1 | 2 |
| 5 | | 16720X004 | Screw, Hex Head (1/4-20 x 1-1/2") | 1 | 4 |
| 6 | | 60275X000 | Locknut (1/4-20) | 1 | 4 |
| 9 | | 1096781 | Kit, Hinge Pin Replacement Hardware (Pair) | 1 | 1 |
| | | | NLA - Wrench, Allen (3/32") | 1 | 1 |
| | | | Cap, Threaded | 1 | 4 |
| | | | Washer, Locking Split (#10) | 1 | 4 |
| | | | Screw, Socket Button Head Cap, Regulator (8-32 x 3/8") | 1 | 4 |
| 10 | B,C,G | 1118225 | Frame, Side, Black- Right | 1 | 1 |
| 10 | B,C,G | 1118226-NLA | NLA - Frame, Side, Black- Left | 1 | 1 |
| 10 | H,I | 1194252 | Frame, Side, Black - Right | 1 | 1 |
| 10 | H,I | 1194245 | Frame, Side, Black - Left | 1 | 1 |
| 10 | B,C,D, G | 8881122748 | Frame, Side, Color - Right | 1 | 1 |
| 10 | B,C,D, G | 8881122749 | Frame, Side, Color - Left | 1 | 1 |
| 10 | D,H | 8881194239 | Frame, Side, Color - Right | 1 | 1 |
| 10 | D,H | 8881194354 | Frame, Side, Color - Left | 1 | 1 |
| 11 | E | 1029501 | Plug Button, Black (1") | 1 | 2 |
| 12 | F | 15680X013 | Anti-Rattle (1") | 1 | 2 |

NOTE: A - Kit includes items 2 - 8.
 B - 1096781, Hinge Pin Replacement Kit is only used on Side Frames (Item 10) w/ welded on Hinge Pins manufactured before (04/01/13).
 C - Side Frames manufactured after (04/11/13) have Hinge Pin Saddles w/ Square Holes to attach Removable, Non-Welded Hinge Pins.
 D - All Side Frames ordered after (04/11/13) require new Side Frame Hardware that will include the Removable Hinge Pins also and the removable Hinge Pins cannot be sold separately. Specify 71P Silver Vein when ordering.
 E - Chairs without Anti-Tippers require Plug Buttons.
 F - Anti-Rattle used in place of Plug Buttons for Chairs w/ Anti-Tippers.
 G - Before 10/12/16 bearing size was 1/2" (Before 02/21/17 applies to stock models T4_WCB22 and T4_WCB24 only).
 H - After 10/11/16 bearing size changed to 5/8" (After 02/20/17 applies to stock models T4_WCB22 and T4_WCB24 only).
 I - All Side Frames ordered after (04/11/13) require new Side Frame Hardware that will include the Removable Hinge Pins also and the removable Hinge Pins cannot be sold separately.

Crossbraces and Hardware

NOTE: If your chair was built with a serial # starting with "03H" or "03I", please contact an Invacare Parts Specialist for replacement parts at 1-800-333-6900 Ext. 3722.



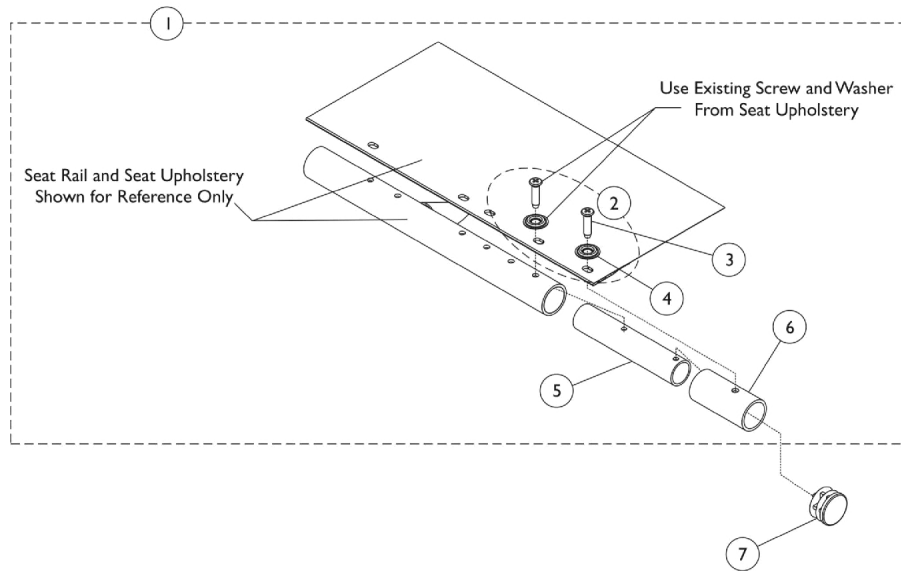
Crossbraces and Hardware

NOTE: If your chair was built with a serial # starting with "03H" or "03I", please contact an Invacare Parts Specialist for replacement parts at 1-800-333-6900 Ext. 3722.

| Item Number | Note | Part Number | Description | Quantity Per | |
|--------------------------------|------|-------------|---|--------------|----------|
| | | | | Package | Assembly |
| 1 | A | 1118201 | Hardware, X-Brace (18 - 24" W) | 1 | 1 |
| 2 | | 60264X001 | Locknut (5/16-24) | 1 | 2 |
| 3 | | 40317X001 | Screw, Hex Head (5/16-24 x 2-3/4") | 1 | 2 |
| 4 | | 1027095 | Plug Button, Black (7/8") | 1 | 4 |
| 5 | | 1008495 | Screw, Socket Button Head (1/4-20 x 1-1/2") | 1 | 8 |
| 6 | | 60275X000 | Locknut (1/4-20) | 1 | 12 |
| 7 | | 1009837 | Screw, Socket Button Head (1/4-20 x 1") | 1 | 2 |
| 8 | | 1012172-NLA | NLA - Clamp, Saddle | 1 | 4 |
| 9 | | 1008432 | Screw, Socket Button Head (1/4-20 x 1-1/4") | 1 | 2 |
| 10 | | 1118199 | Link, Pivot, Black (18 - 24" W) | 1 | 2 |
| 11 | | 1118206 | Crossbrace, Black (18" W) | 1 | 2 |
| 11 | | 1117405 | Crossbrace, Black (20" W) | 1 | 2 |
| 11 | | 1117406 | Crossbrace, Black (22" W) | 1 | 2 |
| 11 | | 1117407 | Crossbrace, Black (24" W) | 1 | 2 |
| NOTE: A - Includes items 2-10. | | | | | |

Seat Extensions

NOTE: If your chair was built with a serial # starting with "03H" or "03I", please contact an Invacare Parts Specialist for replacement parts at 1-800-333-6900 Ext. 3722.



Seat Extensions

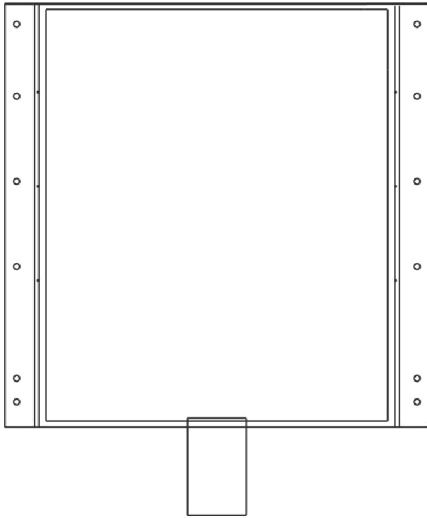
NOTE: If your chair was built with a serial # starting with "03H" or "03I", please contact an Invacare Parts Specialist for replacement parts at 1-800-333-6900 Ext. 3722.

| Item Number | Note | Part Number | Description | Quantity Per | |
|---|------|-------------|---|--------------|----------|
| | | | | Package | Assembly |
| 1 | A,B | 1119122 | Kit, Seat Extension (2") | 1 | 1 |
| 3 | | | Screw, Phillips Oval Head (#12-14 x 7/8") | 1 | 2 |
| 4 | | | Washer (1/4 x 3/4 x 3/32") | 1 | 2 |
| 5 | | | Tube, Insert, Black | 1 | 2 |
| 6 | | | Spacer | 1 | 2 |
| 2 | C | 1131378 | Kit, Hardware | 1 | 1 |
| 3 | | | Screw, Phillips Oval Head (#12-14 x 7/8") | 1 | 12 |
| 4 | | | Washer (1/4 x 3/4 x 3/32") | 1 | 12 |
| 7 | | 1027095 | Plug Button, Black (7/8") | 1 | 1 |
| NOTE: A - Includes items 3-6. B - For 20" seat depth, includes items 2-5 all at quantity 2. C - Includes 3 and 4. | | | | | |

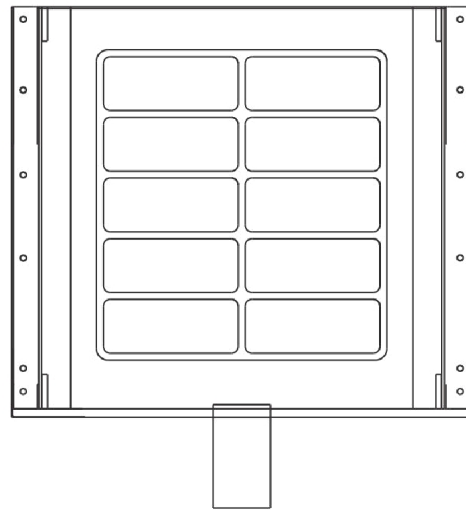
Seat Upholstery and Hardware Kits

NOTE: If your chair was built with a serial # starting with "03H" or "03I", please contact an Invacare Parts Specialist for replacement parts at 1-800-333-6900 Ext. 3722.

NOTE: After 10/11/16 additional hole was added to the rear corners of the seat upholstery and accommodates all wheelchairs manufactured before 10/12/16 as well. All Crossbrace Seat Rails in the field already have the additional upholstery hole and do not require replacement of Crossbraces.



Seat Upholstery - Nylon



Seat Upholstery - Vinyl

Seat Upholstery and Hardware Kits

NOTE: If your chair was built with a serial # starting with "03H" or "03I", please contact an Invacare Parts Specialist for replacement parts at 1-800-333-6900 Ext. 3722.

NOTE: After 10/11/16 additional hole was added to the rear corners of the seat upholstery and accommodates all wheelchairs manufactured before 10/12/16 as well. All Crossbrace Seat Rails in the field already have the additional upholstery hole and do not require replacement of Crossbraces.

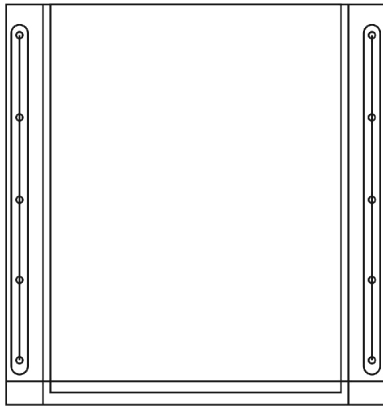
| Chair Width x Depth | Vinyl Upholstery | Nylon Upholstery |
|--|--------------------------------|--------------------------|
| 18" x 18" | 8881127512 See Note(s) B, A | 1127579 See Note(s) B |
| 18" x 20" | 8881127588 See Note(s) B, A | 1127580 See Note(s) B |
| 20" x 18" | 8881135515 See Note(s) B, A | 1127536 See Note(s) B |
| 20" x 20" | 8881127590 See Note(s) B, A | 1127582 See Note(s) B |
| 22" x 18" | 8881127591 See Note(s) B, A | 1127538 See Note(s) B |
| 22" x 20" | 8881127592 See Note(s) B, A | 1127584 See Note(s) B |
| 24" x 18" | 8881127593 See Note(s) B, A | 1127585 See Note(s) B |
| 24" x 20" | 8881127594 See Note(s) B, A | 1127586 See Note(s) B |
| NOTE: A - Specify upholstery color when ordering. See category titled, "Upholstery and Frame Colors." B - Upholstery kits include hardware. 18" deep chairs have six mounting holes and 20" deep chairs have seven mounting holes. | | |

Hardware - Seat Upholstery

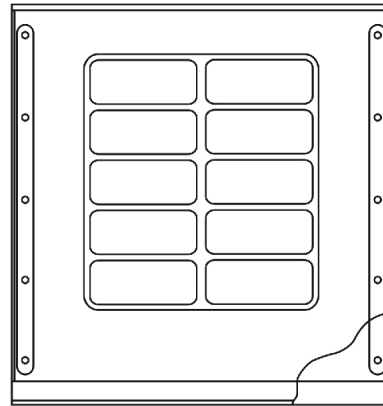
| Part Number | Description | Quantity |
|---|---|---------------------------------------|
| 1194392 See Note(s) A | 14 ea. Screw, Phillips Oval Head (#12-14 x 7/8") 14 ea. Washer (1/4 x 3/4 x 3/32") | 1 package of 14 Screws and 14 Washers |
| NOTE: A - Hardware is not sold individually. | | |

Back Upholstery

NOTE: If your chair was built with a serial # starting with "03H" or "03I", please contact an Invacare Parts Specialist for replacement parts at 1-800-333-6900 Ext. 3722.



Back Upholstery - Nylon



Back Upholstery - Vinyl

Back Upholstery

NOTE: If your chair was built with a serial # starting with "03H" or "03I", please contact an Invacare Parts Specialist for replacement parts at 1-800-333-6900 Ext. 3722.

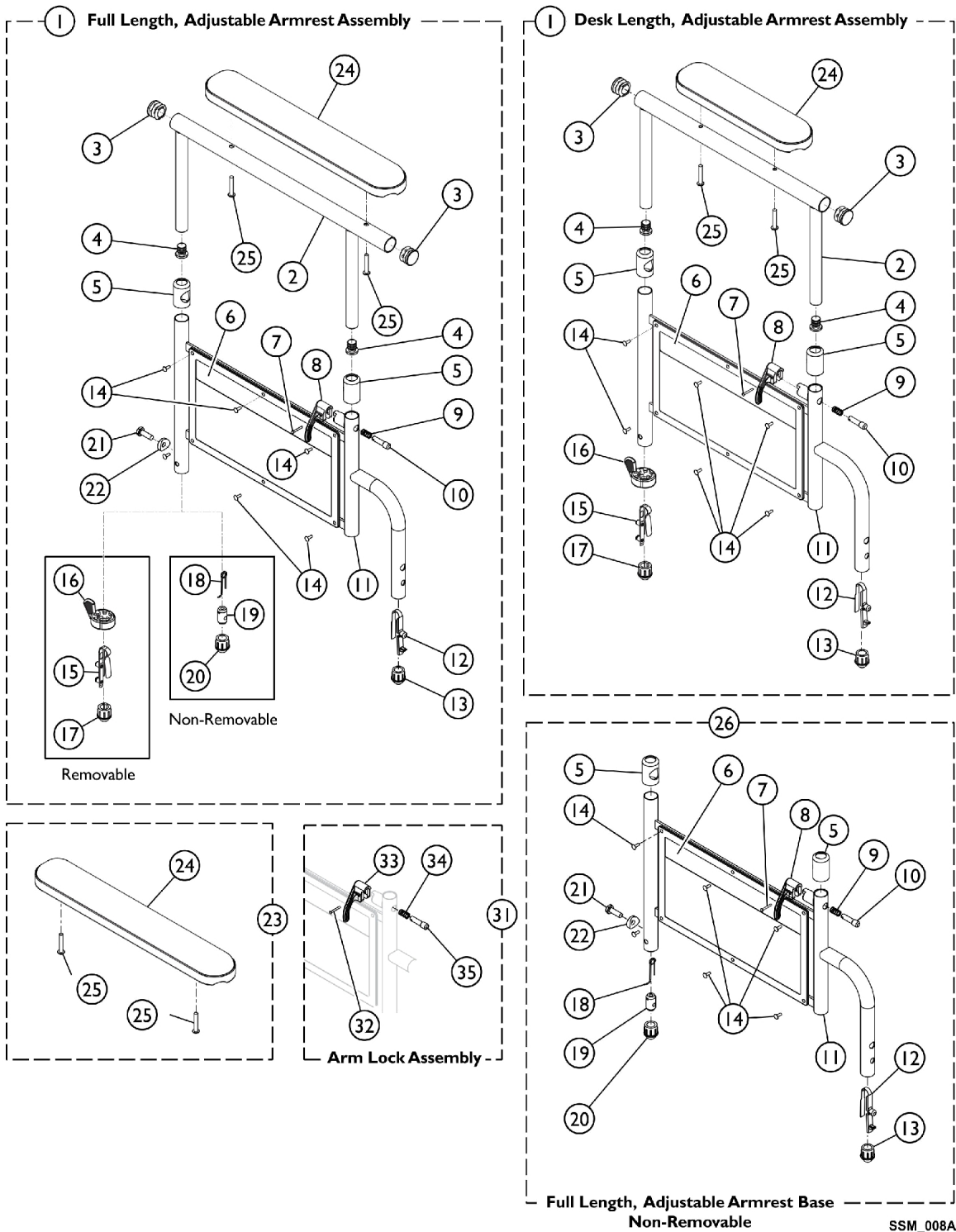
| Chair Width x Height | Vinyl Upholstery | Nylon Upholstery |
|--|------------------|------------------|
| 18" x 16" | 8881127476 | 1135517 |
| | See Note(s) B, A | See Note(s) B |
| 20" x 16" | 8881127576 | 1135518 |
| | See Note(s) A, B | See Note(s) B |
| 22" x 16" | 8881135516 | 1135519 |
| | See Note(s) A, B | See Note(s) B |
| 24" x 16" | 8881127578 | 1127574 |
| | See Note(s) A, B | See Note(s) B |
| NOTE: A - Specify upholstery color when ordering. See category titled, "Upholstery and Frame Colors." B - Upholstery kits include hardware. | | |

Hardware for Back Upholstery

| Part Number |
|--------------------------------------|
| 1131378 |
| 12 each - Washer (1/4 x 3/4 x 3/32") |
| 12 each - Screw (#12 x 7/8") |

Conventional Adjustable Height Arms - Chrome and Black Finish

NOTE: If your chair was built with a serial number starting with "03H" or "03I", please contact an Invacare Parts Specialist for replacement parts at 1-800-333-6900 Ext. 3722.



Conventional Adjustable Height Arms - Chrome and Black Finish

NOTE: If your chair was built with a serial number starting with "03H" or "03I", please contact an Invacare Parts Specialist for replacement parts at 1-800-333-6900 Ext. 3722.

| Item Number | Note | Part Number | Description | Quantity Per | |
|-------------|-------|-------------|---|--------------|----------|
| | | | | Package | Assembly |
| 1 | A,B,J | 8881127561 | Kit, Armrest, Full Length, Black - Right (Style 19) | 1 | 1 |
| 2 | | | Tube, Arm, Full Length, Black | 1 | 1 |
| 3 | | | Plug Button, Black (7/8") | 2 | 1 |
| 4 | | | Plug Button, Black (5/8") | 2 | 1 |
| 5 | | | Anti-Rattle | 2 | 1 |
| 6 | | | Guard, Clothing | 1 | 1 |
| 7 | | | Rivet, Tubular | 1 | 1 |
| 8 | | | Handle, Lock, Black - Right | 1 | 1 |
| 9 | | | Spring, Arm Lock | 1 | 1 |
| 10 | | | Pin, Locking | 1 | 1 |
| 11 | | | Armrest, Adjustable Height, Black | 1 | 1 |
| 12 | | | Spring, Torsion w/ Button Lock | 1 | 1 |
| 13 | | | Plug, Armrest, Black (3/4") (18GA) | 1 | 1 |
| 14 | | | Rivet | 6 | 1 |
| 15 | | | Spring, Torsion with Button Lock | 1 | 1 |
| 16 | | | Handle, Quad Release | 1 | 1 |
| 17 | | | Plug Button, Arm Tube, Black (3/4") | 1 | 1 |
| 24 | | | NLA - Pad, Arm, Full Length w/ Law Label | 1 | 1 |
| 25 | | | Package, Screw Phillips Pan Head (#10-32 x 1-1/8") | 2 | 1 |
| 1 | A,B,J | 8881127456 | Kit, Armrest, Full Length, Black - Left (Style 19) | 1 | 1 |
| 2 | | | Tube, Arm, Full Length, Black | 1 | 1 |
| 3 | | | Plug Button, Black (7/8") | 1 | 2 |
| 4 | | | Plug Button, Black (5/8") | 1 | 2 |
| 5 | | | Anti-Rattle | 1 | 2 |
| 6 | | | Guard, Clothing | 1 | 1 |
| 7 | | | Rivet, Tubular | 1 | 1 |
| 8 | | | Handle, Lock, Black - Left | 1 | 1 |
| 9 | | | Spring, Arm Lock | 1 | 1 |
| 10 | | | Pin, Locking | 1 | 1 |
| 11 | | | Armrest, Adjustable Height, Black | 1 | 1 |
| 12 | | | Spring, Torsion w/ Button Lock | 1 | 1 |
| 13 | | | Plug, Armrest, Black (3/4") (18GA) | 1 | 1 |
| 14 | | | Rivet | 1 | 6 |
| 15 | | | Spring, Torsion with Button Lock | 1 | 1 |
| 16 | | | Handle, Quad Release | 1 | 1 |
| 17 | | | Plug Button, Arm Tube, Black (3/4") | 1 | 1 |
| 24 | | | NLA - Pad, Arm, Full Length w/ Law Label | 1 | 1 |
| 25 | | | Package, Screw Phillips Pan Head (#10-32 x 1-1/8") | 1 | 1 |
| 1 | A,B,J | 8881135513 | Kit, Armrest, Desk Length, Black - Right (Style 29) | 1 | 1 |
| 2 | | | Tube, Arm, Desk Length, Black | 1 | 1 |
| 3 | | | Plug Button, Black (7/8") | 1 | 2 |

Conventional Adjustable Height Arms - Chrome and Black Finish

NOTE: If your chair was built with a serial number starting with "03H" or "03I", please contact an Invacare Parts Specialist for replacement parts at 1-800-333-6900 Ext. 3722.

| Item Number | Note | Part Number | Description | Quantity Per | |
|-------------|-------|-------------|--|--------------|----------|
| | | | | Package | Assembly |
| 4 | | | Plug Button, Black (5/8") | 1 | 2 |
| 5 | | | Anti-Rattle | 1 | 2 |
| 6 | | | Guard, Clothing | 1 | 1 |
| 7 | | | Rivet, Tubular | 1 | 1 |
| 8 | | | Handle, Lock, Black - Right | 1 | 1 |
| 9 | | | Spring, Arm Lock | 1 | 1 |
| 10 | | | Pin, Locking | 1 | 1 |
| 11 | | | Armrest, Adjustable Height, Black | 1 | 1 |
| 12 | | | Spring, Torsion w/ Button Lock | 1 | 1 |
| 13 | | | Plug, Armrest, Black (3/4") (18GA) | 1 | 1 |
| 14 | | | Rivet | 1 | 6 |
| 15 | | | Spring, Torsion with Button Lock | 1 | 1 |
| 16 | | | Handle, Quad Release | 1 | 1 |
| 17 | | | Plug Button, Arm Tube, Black (3/4") | 1 | 1 |
| 24 | | | Arm Pad, Desk Length w/ Law Label | 1 | 1 |
| 25 | | | Package, Screw Phillips Pan Head (#10-32 x 1-1/8") | 2 | 1 |
| 1 | A,B,J | 8881135514 | Kit, Armrest, Desk Length, Black - Left (Style 29) | 1 | 1 |
| 2 | | | Tube, Arm, Desk Length, Black | 1 | 1 |
| 3 | | | Plug Button, Black (7/8") | 1 | 2 |
| 4 | | | Plug Button, Black (5/8") | 1 | 2 |
| 5 | | | Anti-Rattle | 1 | 2 |
| 6 | | | Guard, Clothing | 1 | 1 |
| 7 | | | Rivet, Tubular | 1 | 1 |
| 8 | | | Handle, Lock, Black - Left | 1 | 1 |
| 9 | | | Spring, Arm Lock | 1 | 1 |
| 10 | | | Pin, Locking | 1 | 1 |
| 11 | | | Armrest, Adjustable Height, Black | 1 | 1 |
| 12 | | | Spring, Torsion w/ Button Lock | 1 | 1 |
| 13 | | | Plug, Armrest, Black (3/4") (18GA) | 1 | 1 |
| 14 | | | Rivet | 1 | 6 |
| 15 | | | Spring, Torsion with Button Lock | 1 | 1 |
| 16 | | | Handle, Quad Release | 1 | 1 |
| 17 | | | Plug Button, Arm Tube, Black (3/4") | 1 | 1 |
| 24 | | | Arm Pad, Desk Length w/ Law Label | 1 | 1 |
| 25 | | | Package, Screw Phillips Pan Head (#10-32 x 1-1/8") | 2 | 1 |
| 1 | C,D,J | 8881127562 | Kit, Armrest, Full Length, Black- Right (Style 19) | 1 | 1 |
| 2 | | | Tube, Arm, Full Length, Black | 1 | 1 |
| 3 | | | Plug Button, Black (7/8") | 1 | 2 |
| 4 | | | Plug Button, Black (5/8") | 1 | 2 |
| 5 | | | Anti-Rattle | 1 | 2 |
| 6 | | | Guard, Clothing | 1 | 1 |

Conventional Adjustable Height Arms - Chrome and Black Finish

NOTE: If your chair was built with a serial number starting with "03H" or "03I", please contact an Invacare Parts Specialist for replacement parts at 1-800-333-6900 Ext. 3722.

| Item Number | Note | Part Number | Description | Quantity Per | |
|-------------|-------|-------------|--|--------------|----------|
| | | | | Package | Assembly |
| 7 | | | Rivet, Tubular | 1 | 1 |
| 8 | | | Handle, Lock, Black - Right | 1 | 1 |
| 9 | | | Spring, Arm Lock | 1 | 1 |
| 10 | | | Pin, Locking | 1 | 1 |
| 11 | | | Armrest, Adjustable Height, Black | 1 | 1 |
| 12 | | | Spring, Torsion w/ Button Lock | 1 | 1 |
| 13 | | | Plug, Armrest, Black (3/4") (18GA) | 1 | 1 |
| 14 | | | Rivet | 1 | 6 |
| 18 | | | Spring, Release | 1 | 1 |
| 19 | | | Insert, Threaded | 1 | 1 |
| 20 | | | Plug, Armrest, Black (3/4") (20GA) | 1 | 1 |
| 21 | | | NLA - Bolt, Hex Head Cap (1/4-20 x 3/4") | 1 | 1 |
| 22 | | | Spacer, Coved (1/4 x 11/16 x 1/2") | 1 | 1 |
| 24 | | | NLA - Pad, Arm, Full Length w/ Law Label | 1 | 1 |
| 25 | | | Package, Screw Phillips Pan Head (#10-32 x 1-1/8") | 1 | 2 |
| 1 | C,D,J | 8881127560 | Kit, Armrest, Full Length, Black- Left (Style 19) | 1 | 1 |
| 2 | | | Tube, Arm, Full Length, Black | 1 | 1 |
| 3 | | | Plug Button, Black (7/8") | 1 | 2 |
| 4 | | | Plug Button, Black (5/8") | 1 | 2 |
| 5 | | | Anti-Rattle | 1 | 2 |
| 6 | | | Guard, Clothing | 1 | 1 |
| 7 | | | Rivet, Tubular | 1 | 1 |
| 8 | | | Handle, Lock, Black - Left | 1 | 1 |
| 9 | | | Spring, Arm Lock | 1 | 1 |
| 10 | | | Pin, Locking | 1 | 1 |
| 11 | | | Armrest, Adjustable Height, Black | 1 | 1 |
| 12 | | | Spring, Torsion w/ Button Lock | 1 | 1 |
| 13 | | | Plug, Armrest, Black (3/4") (18GA) | 1 | 1 |
| 14 | | | Rivet | 1 | 6 |
| 18 | | | Spring, Release | 1 | 1 |
| 19 | | | Insert, Threaded | 1 | 1 |
| 20 | | | Plug, Armrest, Black (3/4") (20GA) | 1 | 1 |
| 21 | | | NLA - Bolt, Hex Head Cap (1/4-20 x 3/4") | 1 | 1 |
| 22 | | | Spacer, Coved (1/4 x 11/16 x 1/2") | 1 | 1 |
| 24 | | | NLA - Pad, Arm, Full Length w/ Law Label | 1 | 1 |
| 25 | | | Package, Screw Phillips Pan Head (#10-32 x 1-1/8") | 1 | 2 |
| 23 | E,J | 8881127510 | Kit, Arm Pad w/Screws - Desk Length | 1 | 1 |
| 24 | | | Arm Pad, Desk Length w/ Law Label | 1 | 1 |
| 25 | | | Package, Screw Phillips Pan Head (#10-32 x 1-1/8") | 2 | 1 |
| 23 | E,J | 8881127509 | Kit, Arm Pad w/Screws - Full Length | 1 | 1 |
| 24 | | | NLA - Pad, Arm, Full Length w/ Law Label | 1 | 1 |

Conventional Adjustable Height Arms - Chrome and Black Finish

NOTE: If your chair was built with a serial number starting with "03H" or "03I", please contact an Invacare Parts Specialist for replacement parts at 1-800-333-6900 Ext. 3722.

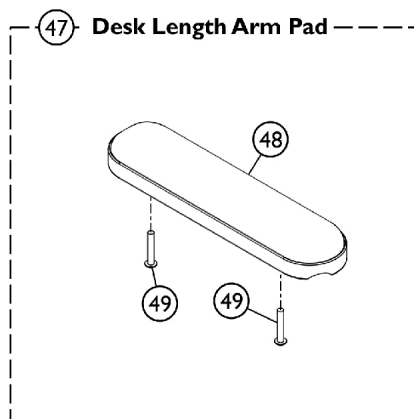
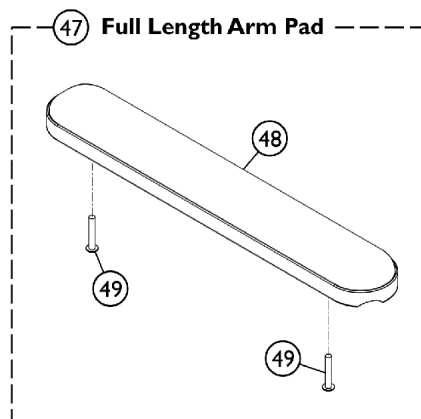
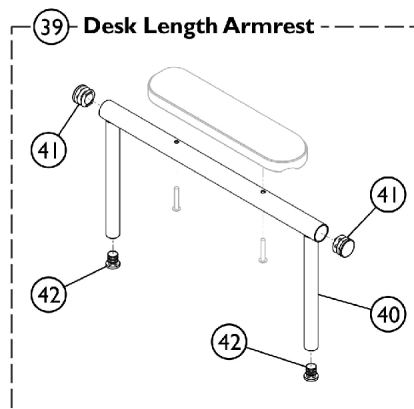
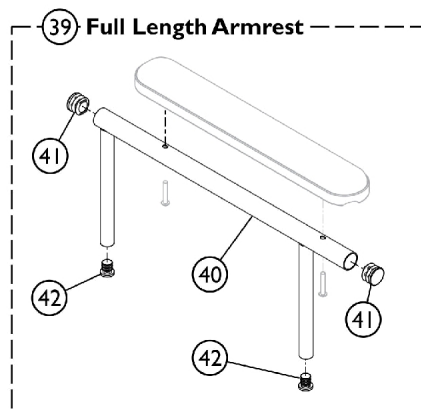
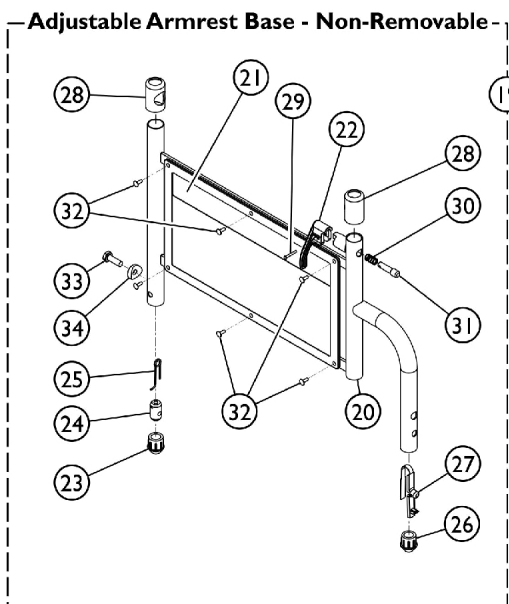
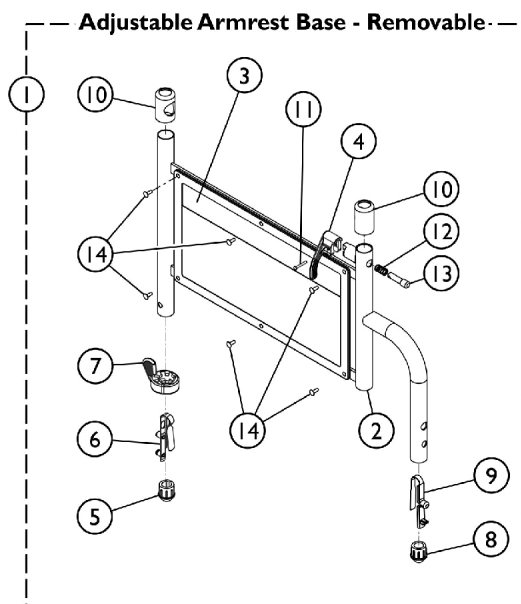
| Item Number | Note | Part Number | Description | Quantity Per | | | | | |
|-------------|--|-------------|---|--------------|--|---------|----------------------------------|---|---|
| | | | | Package | Assembly | | | | |
| 25 | C,F,H | 1121162 | Package, Screw Phillips Pan Head (#10-32 x 1-1/8") | 2 | 1 | | | | |
| 26 | | | Kit, Armrest Base, Adjustable, Non-removable, Black - Right | 1 | 1 | | | | |
| 5 | | | Anti-Rattle | 1 | 2 | | | | |
| 6 | | | Guard, Clothing | 1 | 1 | | | | |
| 7 | | | Rivet, Tubular | 1 | 1 | | | | |
| 8 | | | Handle, Lock, Black - Right | 1 | 1 | | | | |
| 9 | | | Spring, Arm Lock | 1 | 1 | | | | |
| 10 | | | Pin, Locking | 1 | 1 | | | | |
| 11 | | | Armrest, Adjustable Height, Black | 1 | 1 | | | | |
| 12 | | | Spring, Torsion w/ Button Lock | 1 | 1 | | | | |
| 13 | | | Plug, Armrest, Black (3/4") (18GA) | 1 | 1 | | | | |
| 14 | | | Rivet | 1 | 6 | | | | |
| 18 | | | Spring, Release | 1 | 1 | | | | |
| 19 | | | Insert, Threaded | 1 | 1 | | | | |
| 20 | | | Plug, Armrest, Black (3/4") (20GA) | 1 | 1 | | | | |
| 21 | | | NLA - Bolt, Hex Head Cap (1/4-20 x 3/4") | 1 | 1 | | | | |
| 22 | | | Spacer, Coved (1/4 x 11/16 x 1/2") | 1 | 1 | | | | |
| 26 | | | C,F,H | 1121163 | Kit, Armrest Base, Adjustable, Non-removeable, Black - Left | 1 | 1 | | |
| 5 | | | | | Anti-Rattle | 1 | 2 | | |
| 6 | | | | | Guard, Clothing | 1 | 1 | | |
| 7 | | | | | Rivet, Tubular | 1 | 1 | | |
| 8 | | | | | Handle, Lock, Black - Left | 1 | 1 | | |
| 9 | Spring, Arm Lock | 1 | | | 1 | | | | |
| 10 | Pin, Locking | 1 | | | 1 | | | | |
| 11 | Armrest, Adjustable Height, Black | 1 | | | 1 | | | | |
| 12 | Spring, Torsion w/ Button Lock | 1 | | | 1 | | | | |
| 13 | Plug, Armrest, Black (3/4") (18GA) | 1 | | | 1 | | | | |
| 14 | Rivet | 1 | | | 6 | | | | |
| 18 | Spring, Release | 1 | | | 1 | | | | |
| 19 | Insert, Threaded | 1 | | | 1 | | | | |
| 20 | Plug, Armrest, Black (3/4") (20GA) | 1 | | | 1 | | | | |
| 21 | NLA - Bolt, Hex Head Cap (1/4-20 x 3/4") | 1 | | | 1 | | | | |
| 22 | Spacer, Coved (1/4 x 11/16 x 1/2") | 1 | | | 1 | | | | |
| 26 | G,H | 1038460-NLA | | | NLA - Arm Tube Assembly w/ Plug Buttons, Desk Length, Black - Right/Left | 1 | 1 | | |
| 31 | | | | | I | 7100053 | Arm Lock Assembly, Black - Right | 1 | 1 |
| 32 | | | | | | | Rivet, Tubular | 1 | 2 |
| 33 | | | | | | | Handle, Lock, Black - Right | 1 | 1 |
| 34 | | | | | | | Spring, Arm Lock | 1 | 2 |
| 35 | | | | | | | Pin, Locking | 1 | 2 |

Conventional Adjustable Height Arms - Chrome and Black Finish

NOTE: If your chair was built with a serial number starting with "03H" or "03I", please contact an Invacare Parts Specialist for replacement parts at 1-800-333-6900 Ext. 3722.

| Item Number | Note | Part Number | Description | Quantity Per | |
|-------------|--|-------------|---------------------------------|--------------|----------|
| | | | | Package | Assembly |
| 31 | I | 7100054 | Arm Lock Assembly, Black - Left | 1 | 1 |
| 32 | | | Rivet, Tubular | 1 | 2 |
| 33 | | | Handle, Lock, Black - Left | 1 | 1 |
| 34 | | | Spring, Arm Lock | 1 | 2 |
| 35 | | | Pin, Locking | 1 | 2 |
| NOTE: | A - Removable Arm. B - Includes items 2-17, 24 and 25. C - Non-Removable. D - Includes items 2-14, 18-22, 24 and 25. E - Includes items 24 and 25. F - Includes items 5-14 and 18-22. G - Includes items 2-4. H - Please contact an Invacare Parts Specialist to order this item. I - Includes items 32-35. J - Specify upholstery color when ordering, see category titled "Frame Finishes, Packaging, Literature and Upholstery". | | | | |

Conventional Adjustable Height Arms - Color Finish



SSM_009A

Conventional Adjustable Height Arms - Color Finish

| Item Number | Note | Part Number | Description | Quantity Per | |
|-------------|------|-------------|---|--------------|----------|
| | | | | Package | Assembly |
| 1 | E,A | 8881181883 | Kit, Armrest Base, Adjustable, Removable, Color - Right | 1 | 1 |
| 2 | | | Armrest, Adjustable Height, Color | 1 | 1 |
| 3 | | | Guard, Clothing | 1 | 1 |
| 4 | | | Handle, Lock, Black - Right | 1 | 1 |
| 5 | | | Plug Button, Arm Tube, Black (3/4") | 1 | 1 |
| 6 | | | Spring, Torsion with Button Lock | 1 | 1 |
| 7 | | | Handle, Quad Release | 1 | 1 |
| 8 | | | Plug, Armrest, Black (3/4") (18GA) | 1 | 1 |
| 9 | | | Spring, Torsion w/ Button Lock | 1 | 1 |
| 10 | | | Anti-Rattle | 1 | 2 |
| 11 | | | Rivet, Tubular | 1 | 1 |
| 12 | | | Spring, Arm Lock | 1 | 1 |
| 13 | | | Pin, Locking | 1 | 1 |
| 14 | | | Rivet | 1 | 6 |
| 1 | E,A | 8881181884 | Kit, Armrest Base, Adjustable, Removable, Color - Left | 1 | 1 |
| 2 | | | Armrest, Adjustable Height, Color | 1 | 1 |
| 3 | | | Guard, Clothing | 1 | 1 |
| 4 | | | Handle, Lock, Black - Left | 1 | 1 |
| 5 | | | Plug Button, Arm Tube, Black (3/4") | 1 | 1 |
| 6 | | | Spring, Torsion with Button Lock | 1 | 1 |
| 7 | | | Handle, Quad Release | 1 | 1 |
| 8 | | | Plug, Armrest, Black (3/4") (18GA) | 1 | 1 |
| 9 | | | Spring, Torsion w/ Button Lock | 1 | 1 |
| 10 | | | Anti-Rattle | 1 | 2 |
| 11 | | | Rivet, Tubular | 1 | 1 |
| 12 | | | Spring, Arm Lock | 1 | 1 |
| 13 | | | Pin, Locking | 1 | 1 |
| 14 | | | Rivet | 1 | 6 |
| 19 | E,B | 8881181885 | Kit, Armrest Base, Adjustable, Non-removable, Color - Right | 1 | 1 |
| 20 | | | Armrest, Adjustable Height, Color | 1 | 1 |
| 21 | | | Guard, Clothing | 1 | 1 |
| 22 | | | Handle, Lock, Black - Right | 1 | 1 |
| 23 | | | Plug, Armrest, Black (3/4") (20GA) | 1 | 1 |
| 24 | | | Insert, Threaded | 1 | 1 |
| 25 | | | Spring, Release | 1 | 1 |
| 26 | | | Plug, Armrest, Black (3/4") (18GA) | 1 | 1 |
| 27 | | | Spring, Torsion w/ Button Lock | 1 | 1 |
| 28 | | | Anti-Rattle | 1 | 2 |
| 29 | | | Rivet, Tubular | 1 | 1 |
| 30 | | | Spring, Arm Lock | 1 | 1 |
| 31 | | | Pin, Locking | 1 | 1 |

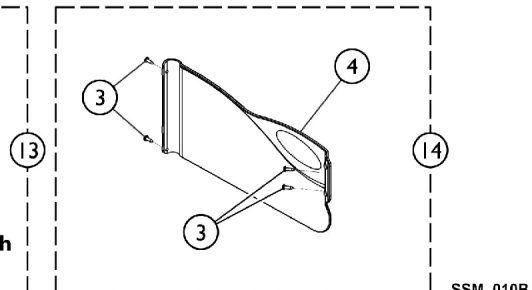
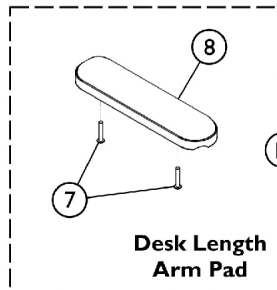
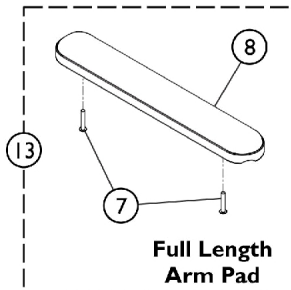
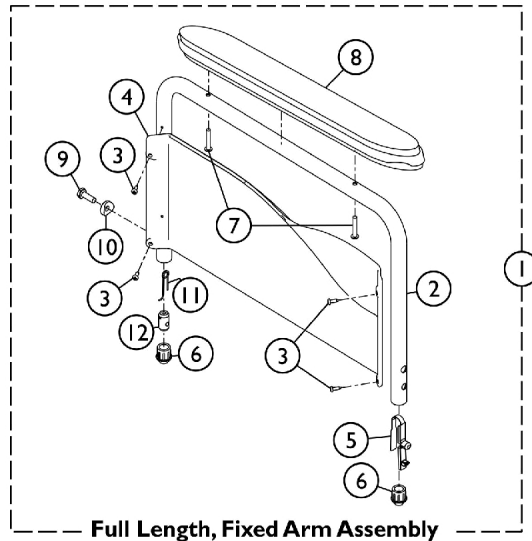
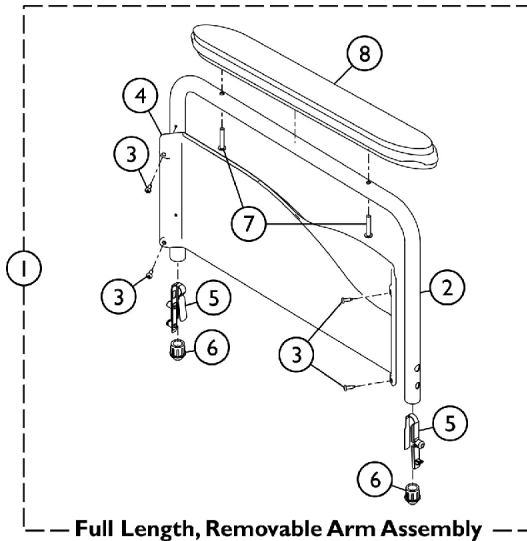
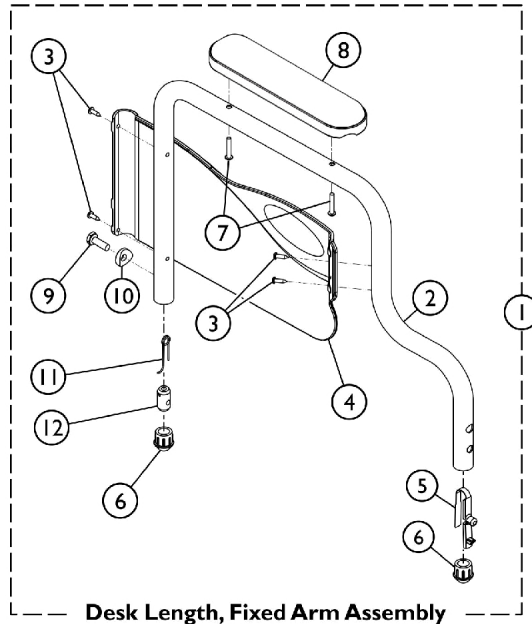
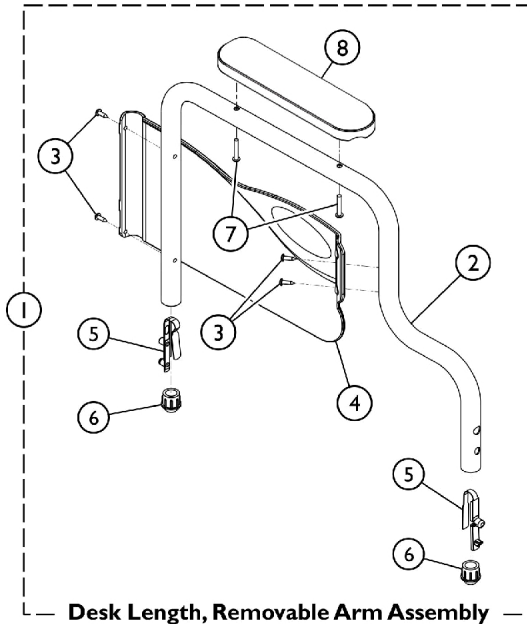
Conventional Adjustable Height Arms - Color Finish

| Item Number | Note | Part Number | Description | Quantity Per | |
|-------------|------|-------------|---|--------------|----------|
| | | | | Package | Assembly |
| 32 | E,B | 8881181886 | Rivet | 1 | 6 |
| 33 | | | NLA - Bolt, Hex Head Cap (1/4-20 x 3/4") | 1 | 1 |
| 34 | | | Spacer, Coved (1/4 x 11/16 x 1/2") | 1 | 1 |
| 19 | | | Kit, Armrest Base, Adjustable, Non-removable, Color - Left | 1 | 1 |
| 20 | | | Armrest, Adjustable Height, Color | 1 | 1 |
| 21 | | | Guard, Clothing | 1 | 1 |
| 22 | | | Handle, Lock, Black - Left | 1 | 1 |
| 23 | | | Plug, Armrest, Black (3/4") (20GA) | 1 | 1 |
| 24 | | | Insert, Threaded | 1 | 1 |
| 25 | | | Spring, Release | 1 | 1 |
| 26 | | | Plug, Armrest, Black (3/4") (18GA) | 1 | 1 |
| 27 | | | Spring, Torsion w/ Button Lock | 1 | 1 |
| 28 | | | Anti-Rattle | 1 | 2 |
| 29 | | | Rivet, Tubular | 1 | 1 |
| 30 | | | Spring, Arm Lock | 1 | 1 |
| 31 | | | Pin, Locking | 1 | 1 |
| 32 | | | Rivet | 1 | 6 |
| 33 | | | NLA - Bolt, Hex Head Cap (1/4-20 x 3/4") | 1 | 1 |
| 34 | | | Spacer, Coved (1/4 x 11/16 x 1/2") | 1 | 1 |
| 39 | | 8881181879 | Kit, Armrest w/ Plug Buttons, Desk Length, Color - Right/Left | 1 | 1 |
| 40 | | | Tube, Arm, Desk Length, Color - Right/Left | 1 | 1 |
| 41 | | | Plug Button, Black (7/8") | 1 | 2 |
| 42 | | 8881181881 | Plug Button, Black (5/8") | 1 | 2 |
| 39 | | | Kit, Armrest w/ Plug Buttons, Full Length, Color - Right/Left | 1 | 1 |
| 40 | | | Tube, Arm, Full Length, Color - Right/Left | 1 | 1 |
| 41 | | 8881127509 | Plug Button, Black (7/8") | 1 | 2 |
| 42 | | | Plug Button, Black (5/8") | 1 | 2 |
| 47 | | | Kit, Arm Pad w/Screws - Full Length | 1 | 1 |
| 48 | | 8881127510 | NLA - Pad, Arm, Full Length w/ Law Label | 1 | 1 |
| 49 | | | Package, Screw Phillips Pan Head (#10-32 x 1-1/8") | 2 | 1 |
| 47 | | | Kit, Arm Pad w/Screws - Desk Length | 1 | 1 |
| 48 | | 8881127510 | Arm Pad, Desk Length w/ Law Label | 1 | 1 |
| 49 | | | Package, Screw Phillips Pan Head (#10-32 x 1-1/8") | 2 | 1 |

NOTE: A - Includes items 2-14.
B - Includes items 20-34.
C - Includes items 40-42.
D - Includes items 48 and 49. Specify upholstery color when ordering, see category titled "Frame Finishes, Packaging, Literature and Upholstery".
E - Specify 71P Silver Vein when ordering.

Conventional Fixed Height - Black Finish

NOTE: If your chair was built with a serial # starting with "03H" or "03I", please contact an Invacare Parts Specialist for replacement parts at 1-800-333-6900 Ext. 3722.



SSM_010B

Conventional Fixed Height - Black Finish

NOTE: If your chair was built with a serial # starting with "03H" or "03I", please contact an Invacare Parts Specialist for replacement parts at 1-800-333-6900 Ext. 3722.

| Item Number | Note | Part Number | Description | Quantity Per | |
|-------------|------|-------------|---|--------------|----------|
| | | | | Package | Assembly |
| 1 | A,B | 8881127565 | Kit, Armrest, Desk Length, Black - Right (Style 28) | 1 | 1 |
| 2 | | | Armrest, Desk Length, Black - Right | 1 | 1 |
| 3 | | | Screw, Self Tapping (#6-20 x 1/2") | 1 | 4 |
| 4 | | | NLA - Guard, Clothing, Desk Length - Right | 1 | 1 |
| 5 | | | Spring, Torsion w/ Button Lock | 1 | 2 |
| 6 | | | Plug, Armrest, Black (3/4") (18GA) | 1 | 2 |
| 7 | | | Package, Screw Phillips Pan Head (#10-32 x 1-1/8") | 1 | 2 |
| 8 | | | Arm Pad, Desk Length w/ Law Label | 1 | 1 |
| 1 | A,B | 8881127563 | Kit, Armrest, Desk Length, Black - Left (Style 28) | 1 | 1 |
| 2 | | | Armrest, Desk Length, Black- Left | 1 | 1 |
| 3 | | | Screw, Self Tapping (#6-20 x 1/2") | 1 | 4 |
| 4 | | | NLA - Guard, Clothing, Desk Length - Left | 1 | 1 |
| 5 | | | Spring, Torsion w/ Button Lock | 1 | 2 |
| 6 | | | Plug, Armrest, Black (3/4") (18GA) | 1 | 2 |
| 7 | | | Package, Screw Phillips Pan Head (#10-32 x 1-1/8") | 1 | 2 |
| 8 | | | Arm Pad, Desk Length w/ Law Label | 1 | 1 |
| 1 | C,D | 8881127566 | Kit, Armrest, Desk Length, Black - Right (Style 28) | 1 | 1 |
| 2 | | | Armrest, Desk Length, Black - Right | 1 | 1 |
| 3 | | | Screw, Self Tapping (#6-20 x 1/2") | 1 | 4 |
| 4 | | | NLA - Guard, Clothing, Desk Length - Right | 1 | 1 |
| 5 | | | Spring, Torsion w/ Button Lock | 1 | 1 |
| 6 | | | Plug, Armrest, Black (3/4") (18GA) | 1 | 2 |
| 7 | | | Package, Screw Phillips Pan Head (#10-32 x 1-1/8") | 1 | 2 |
| 8 | | | Arm Pad, Desk Length w/ Law Label | 1 | 1 |
| 9 | | | NLA - Bolt, Hex Head Cap (1/4-20 x 3/4") | 1 | 1 |
| 10 | | | Spacer, Coved (1/4 x 11/16 x 1/2") | 1 | 1 |
| 11 | | | Spring, Release | 1 | 1 |
| 12 | | | Insert, Threaded | 1 | 1 |
| 1 | C,D | 8881127564 | Kit, Armrest, Desk Length, Black - Left (Style 28) | 1 | 1 |
| 2 | | | Armrest, Desk Length, Black- Left | 1 | 1 |
| 3 | | | Screw, Self Tapping (#6-20 x 1/2") | 1 | 4 |
| 4 | | | NLA - Guard, Clothing, Desk Length - Left | 1 | 1 |
| 5 | | | Spring, Torsion w/ Button Lock | 1 | 1 |
| 6 | | | Plug, Armrest, Black (3/4") (18GA) | 1 | 2 |
| 7 | | | Package, Screw Phillips Pan Head (#10-32 x 1-1/8") | 1 | 2 |
| 8 | | | Arm Pad, Desk Length w/ Law Label | 1 | 1 |
| 9 | | | NLA - Bolt, Hex Head Cap (1/4-20 x 3/4") | 1 | 1 |
| 10 | | | Spacer, Coved (1/4 x 11/16 x 1/2") | 1 | 1 |
| 11 | | | Spring, Release | 1 | 1 |
| 12 | | | Insert, Threaded | 1 | 1 |
| 1 | A,B | 8881127569 | Kit, Armrest, Full Length, Black - Right (Style 18) | 1 | 1 |
| 2 | | | Armrest, Full Length, Black - Right | 1 | 1 |
| 3 | | | Guard, Clothing, Full Length - Right | 1 | 1 |

Conventional Fixed Height - Black Finish

NOTE: If your chair was built with a serial # starting with "03H" or "03I", please contact an Invacare Parts Specialist for replacement parts at 1-800-333-6900 Ext. 3722.

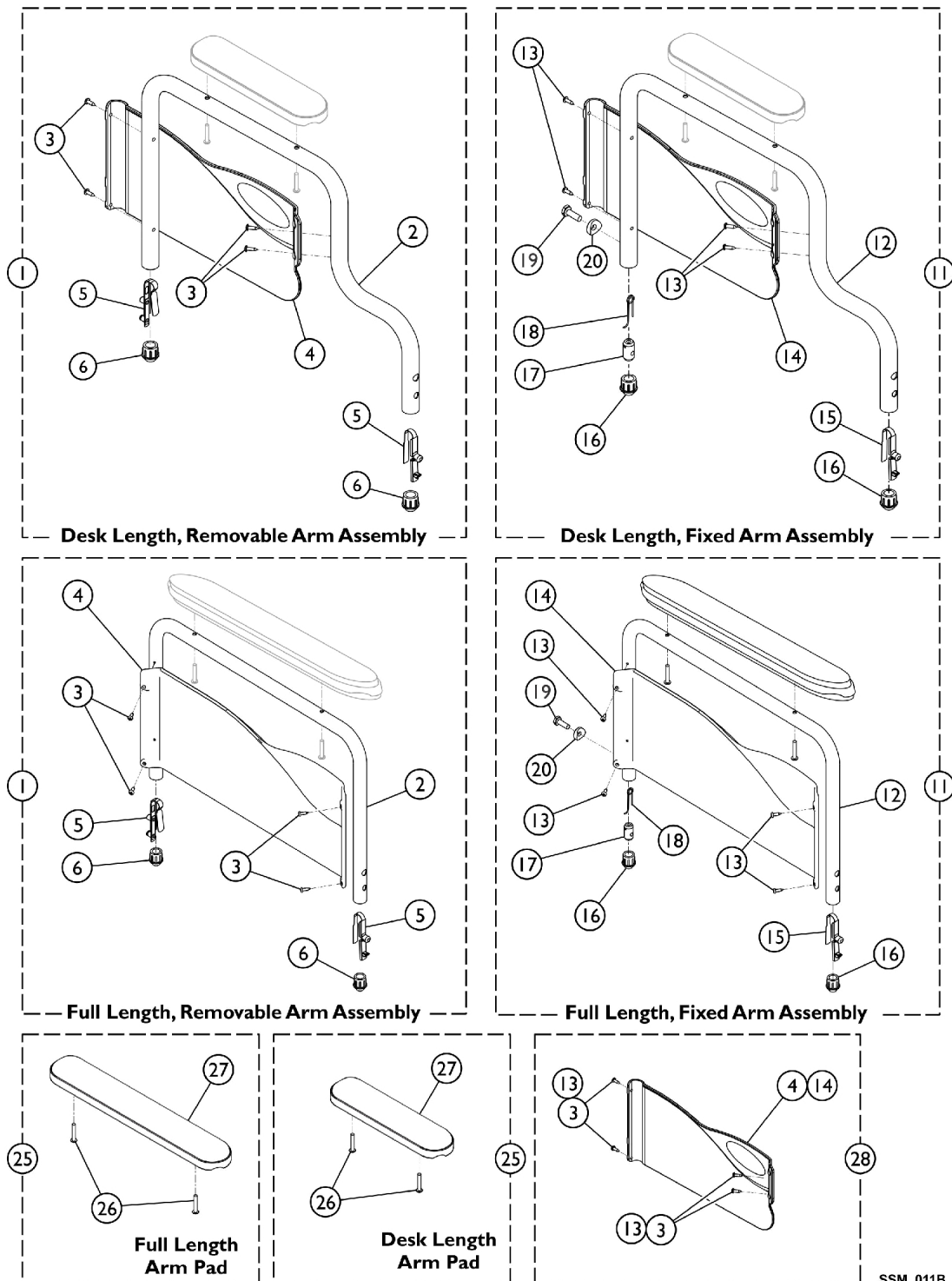
| Item Number | Note | Part Number | Description | Quantity Per | |
|-------------|------|-------------|---|--------------|----------|
| | | | | Package | Assembly |
| 4 | A,B | 8881127567 | Screw, Self Tapping (#6-20 x 1/2") | 1 | 4 |
| 5 | | | Spring, Torsion w/ Button Lock | 1 | 2 |
| 6 | | | Plug, Armrest, Black (3/4") (18GA) | 1 | 2 |
| 7 | | | Package, Screw Phillips Pan Head (#10-32 x 1-1/8") | 1 | 2 |
| 8 | | | NLA - Pad, Arm, Full Length w/ Law Label | 1 | 1 |
| 1 | | | Kit, Armrest, Full Length, Black - Left (Style 18) | 1 | 1 |
| 2 | | | Armrest, Full Length, Black - Left | 1 | 1 |
| 3 | | | Guard, Clothing, Full Length - Left | 1 | 1 |
| 4 | | | Screw, Self Tapping (#6-20 x 1/2") | 1 | 4 |
| 5 | | | Spring, Torsion w/ Button Lock | 1 | 2 |
| 6 | | | Plug, Armrest, Black (3/4") (18GA) | 1 | 2 |
| 7 | | | Package, Screw Phillips Pan Head (#10-32 x 1-1/8") | 1 | 2 |
| 8 | C,D | 8881127570 | NLA - Pad, Arm, Full Length w/ Law Label | 1 | 1 |
| 1 | | | Kit, Armrest, Full Length, Black - Right (Style 18) | 1 | 1 |
| 2 | | | Armrest, Full Length, Black - Right | 1 | 1 |
| 3 | | | Screw, Self Tapping (#6-20 x 1/2") | 1 | 4 |
| 4 | | | Guard, Clothing, Full Length - Right | 1 | 1 |
| 5 | | | Spring, Torsion w/ Button Lock | 1 | 1 |
| 6 | | | Plug, Armrest, Black (3/4") (18GA) | 1 | 2 |
| 7 | | | Package, Screw Phillips Pan Head (#10-32 x 1-1/8") | 1 | 2 |
| 8 | | | NLA - Pad, Arm, Full Length w/ Law Label | 1 | 1 |
| 9 | | | NLA - Bolt, Hex Head Cap (1/4-20 x 3/4") | 1 | 1 |
| 10 | | | Spacer, Coved (1/4 x 11/16 x 1/2") | 1 | 1 |
| 11 | | | Spring, Release | 1 | 1 |
| 12 | C,D | 8881127568 | Insert, Threaded | 1 | 1 |
| 1 | | | Kit, Armrest, Full Length, Black - Left (Style 18) | 1 | 1 |
| 2 | | | Armrest, Full Length, Black - Left | 1 | 1 |
| 3 | | | Screw, Self Tapping (#6-20 x 1/2") | 1 | 4 |
| 4 | | | Guard, Clothing, Full Length - Left | 1 | 1 |
| 5 | | | Spring, Torsion w/ Button Lock | 1 | 1 |
| 6 | | | Plug, Armrest, Black (3/4") (18GA) | 1 | 2 |
| 7 | | | Package, Screw Phillips Pan Head (#10-32 x 1-1/8") | 1 | 2 |
| 8 | | | NLA - Pad, Arm, Full Length w/ Law Label | 1 | 1 |
| 9 | | | NLA - Bolt, Hex Head Cap (1/4-20 x 3/4") | 1 | 1 |
| 10 | | | Spacer, Coved (1/4 x 11/16 x 1/2") | 1 | 1 |
| 11 | | | Spring, Release | 1 | 1 |
| 12 | E | 8881127509 | Insert, Threaded | 1 | 1 |
| 13 | | | Kit, Arm Pad w/Screws - Full Length | 1 | 1 |
| 7 | | | Package, Screw Phillips Pan Head (#10-32 x 1-1/8") | 2 | 1 |
| 8 | E | 8881127510 | NLA - Pad, Arm, Full Length w/ Law Label | 1 | 1 |
| 13 | | | Kit, Arm Pad w/Screws - Desk Length | 1 | 1 |
| 7 | | | Package, Screw Phillips Pan Head (#10-32 x 1-1/8") | 2 | 1 |
| 8 | | | Arm Pad, Desk Length w/ Law Label | 1 | 1 |

Conventional Fixed Height - Black Finish

NOTE: If your chair was built with a serial # starting with "03H" or "03I", please contact an Invacare Parts Specialist for replacement parts at 1-800-333-6900 Ext. 3722.

| Item Number | Note | Part Number | Description | Quantity Per | |
|---|------|-------------|--|--------------|----------|
| | | | | Package | Assembly |
| 14 | F | 1117365 | Kit, Clothing Guard, Conventional, Desk Length w/ Screws and Decals (Pair) | 1 | 1 |
| 14 | F | 1117366 | Kit, Clothing Guards - Conventional, Full Length w/ Screws & Decals | 1 | 1 |
| NOTE: A - Removable Arm. B - Includes items 2-8. C - Non-Removable Arm. D - Includes items 2-12. E - Includes items 7 and 8. F - Includes (1) each right and left clothing guard and attaching hardware. | | | | | |

Conventional Fixed Height - Color Finish



Conventional Fixed Height - Color Finish

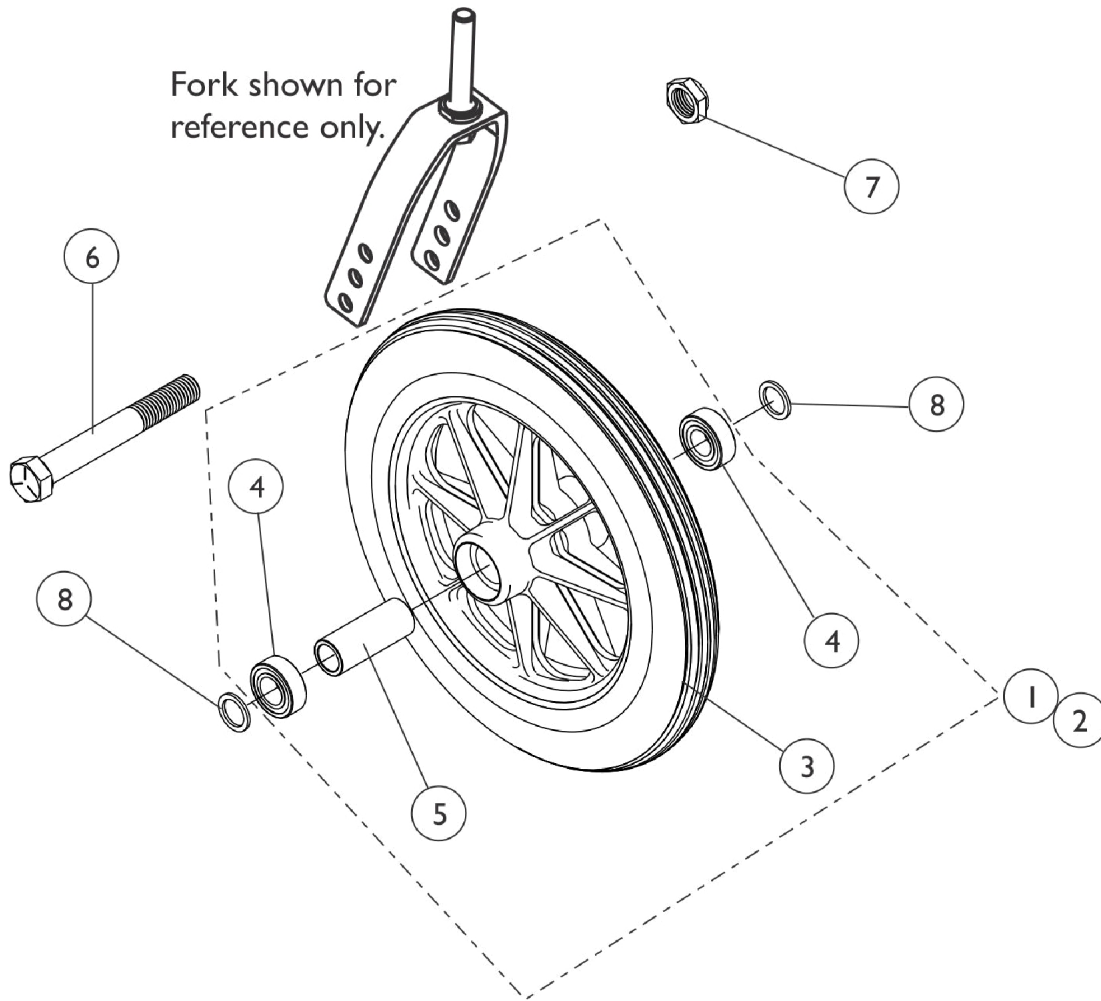
| Item Number | Note | Part Number | Description | Quantity Per | |
|-------------|------|-------------|---|--------------|----------|
| | | | | Package | Assembly |
| 1 | A,D | 8881182013 | Kit, Armrest, Fixed, Removable, Full Length, Color - Right (Style 18) | 1 | 1 |
| 2 | | | Armrest, Full Length, Color - Right | 1 | 1 |
| 3 | | | Screw, Self Tapping (#6-20 x 1/2") | 1 | 4 |
| 4 | | | Guard, Clothing, Full Length - Right | 1 | 1 |
| 5 | | | Spring, Torsion w/ Button Lock | 1 | 2 |
| 6 | | | Plug, Armrest, Black (3/4") (18GA) | 1 | 2 |
| 1 | A,D | 8881182014 | Kit, Armrest, Fixed, Removable, Full Length, Color - Left (Style 18) | 1 | 1 |
| 2 | | | Armrest, Full Length, Color - Left | 1 | 1 |
| 3 | | | Screw, Self Tapping (#6-20 x 1/2") | 1 | 4 |
| 4 | | | Guard, Clothing, Full Length - Left | 1 | 1 |
| 5 | | | Spring, Torsion w/ Button Lock | 1 | 2 |
| 6 | | | Plug, Armrest, Black (3/4") (18GA) | 1 | 2 |
| 1 | A,D | 8881182121 | Kit, Armrest, Fixed, Removable, Desk Length, Color - Right (Style 28) | 1 | 1 |
| 2 | | | Armrest, Desk Length, Color - Right | 1 | 1 |
| 3 | | | Screw, Self Tapping (#6-20 x 1/2") | 1 | 4 |
| 4 | | | NLA - Guard, Clothing, Desk Length - Right | 1 | 1 |
| 5 | | | Spring, Torsion w/ Button Lock | 1 | 2 |
| 6 | | | Plug, Armrest, Black (3/4") (18GA) | 1 | 2 |
| 1 | A,D | 8881182122 | Kit, Armrest, Fixed, Removable, Desk Length, Color - Left (Style 28) | 1 | 1 |
| 2 | | | Armrest, Desk Length, Color - Left | 1 | 1 |
| 3 | | | Screw, Self Tapping (#6-20 x 1/2") | 1 | 4 |
| 4 | | | NLA - Guard, Clothing, Desk Length - Left | 1 | 1 |
| 5 | | | Spring, Torsion w/ Button Lock | 1 | 2 |
| 6 | | | Plug, Armrest, Black (3/4") (18GA) | 1 | 2 |
| 11 | B,D | 8881180820 | Kit, Armrest, Fixed, Non-removable, Full Length, Color - Right | 1 | 1 |
| 12 | | | Armrest, Full Length, Color - Right | 1 | 1 |
| 13 | | | Screw, Self Tapping (#6-20 x 1/2") | 1 | 4 |
| 14 | | | Guard, Clothing, Full Length - Right | 1 | 1 |
| 15 | | | Spring, Torsion w/ Button Lock | 1 | 1 |
| 16 | | | Plug, Armrest, Black (3/4") (18GA) | 1 | 2 |
| 17 | | | Insert, Threaded | 1 | 1 |
| 18 | | | Spring, Release | 1 | 1 |
| 19 | | | NLA - Bolt, Hex Head Cap (1/4-20 x 3/4") | 1 | 1 |
| 20 | | | Spacer, Coved (1/4 x 11/16 x 1/2") | 1 | 1 |
| 11 | B,D | 8881180821 | Kit, Armrest, Fixed, Non-removable, Full Length, Color - Left | 1 | 1 |
| 12 | | | Armrest, Full Length, Color - Left | 1 | 1 |
| 13 | | | Screw, Self Tapping (#6-20 x 1/2") | 1 | 4 |
| 14 | | | Guard, Clothing, Full Length - Left | 1 | 1 |
| 15 | | | Spring, Torsion w/ Button Lock | 1 | 1 |
| 16 | | | Plug, Armrest, Black (3/4") (18GA) | 1 | 2 |

Conventional Fixed Height - Color Finish

| Item Number | Note | Part Number | Description | Quantity Per | |
|--|------|-------------|--|--------------|----------|
| | | | | Package | Assembly |
| 17 | | | Insert, Threaded | 1 | 1 |
| 18 | | | Spring, Release | 1 | 1 |
| 19 | | | NLA - Bolt, Hex Head Cap (1/4-20 x 3/4") | 1 | 1 |
| 20 | | | Spacer, Coved (1/4 x 11/16 x 1/2") | 1 | 1 |
| 11 | B,D | 8881122715 | Kit, Armrest, Fixed, Non-removable, Desk Length, Color - Right | 1 | 1 |
| 12 | | | Armrest, Desk Length, Color - Right | 1 | 1 |
| 13 | | | Screw, Self Tapping (#6-20 x 1/2") | 1 | 4 |
| 14 | | | Guard, Clothing, Desk Length - Right | 1 | 1 |
| 15 | | | Spring, Torsion w/ Button Lock | 1 | 1 |
| 16 | | | Plug, Armrest, Black (3/4") (18GA) | 1 | 2 |
| 17 | | | Insert, Threaded | 1 | 1 |
| 18 | | | Spring, Release | 1 | 1 |
| 19 | | | NLA - Bolt, Hex Head Cap (1/4-20 x 3/4") | 1 | 1 |
| 20 | | | Spacer, Coved (1/4 x 11/16 x 1/2") | 1 | 1 |
| 11 | B,D | 8881122716 | Kit, Armrest, Fixed, Non-removable, Desk Length, Color - Left | 1 | 1 |
| 12 | | | Armrest, Desk Length, Color - Left | 1 | 1 |
| 13 | | | Screw, Self Tapping (#6-20 x 1/2") | 1 | 4 |
| 14 | | | Guard, Clothing, Desk Length - Left | 1 | 1 |
| 15 | | | Spring, Torsion w/ Button Lock | 1 | 1 |
| 16 | | | Plug, Armrest, Black (3/4") (18GA) | 1 | 2 |
| 17 | | | Insert, Threaded | 1 | 1 |
| 18 | | | Spring, Release | 1 | 1 |
| 19 | | | NLA - Bolt, Hex Head Cap (1/4-20 x 3/4") | 1 | 1 |
| 20 | | | Spacer, Coved (1/4 x 11/16 x 1/2") | 1 | 1 |
| 25 | C | 8881127509 | Kit, Arm Pad w/Screws - Full Length | 1 | 1 |
| 26 | | | Package, Screw Phillips Pan Head (#10-32 x 1-1/8") | 2 | 1 |
| 27 | | | NLA - Pad, Arm, Full Length w/ Law Label | 1 | 1 |
| 25 | C | 8881127510 | Kit, Arm Pad w/Screws - Desk Length | 1 | 1 |
| 26 | | | Package, Screw Phillips Pan Head (#10-32 x 1-1/8") | 2 | 1 |
| 27 | | | Arm Pad, Desk Length w/ Law Label | 1 | 1 |
| 28 | E | 1117365 | Kit, Clothing Guard, Conventional, Desk Length w/ Screws and Decals (Pair) | 1 | 1 |
| 28 | E | 1117366 | Kit, Clothing Guards - Conventional, Full Length w/ Screws & Decals | 1 | 1 |
| NOTE: A - Includes items 2-6. B - Includes items 12-20. C - Includes items 26 and 27. Specify upholstery color when ordering, see category titled "Frame Finishes, Packaging, Literature and Upholstery". D - Specify 71P Silver Vein when ordering. E - Kit includes Clothing Guards and Mounting Hardware. | | | | | |

Casters and Mounting Hardware

NOTE: If your chair was built with a serial # starting with "03H" or "03I", please contact an Invacare Parts Specialist for replacement parts at 1-800-333-6900 Ext. 3722.



Casters and Mounting Hardware

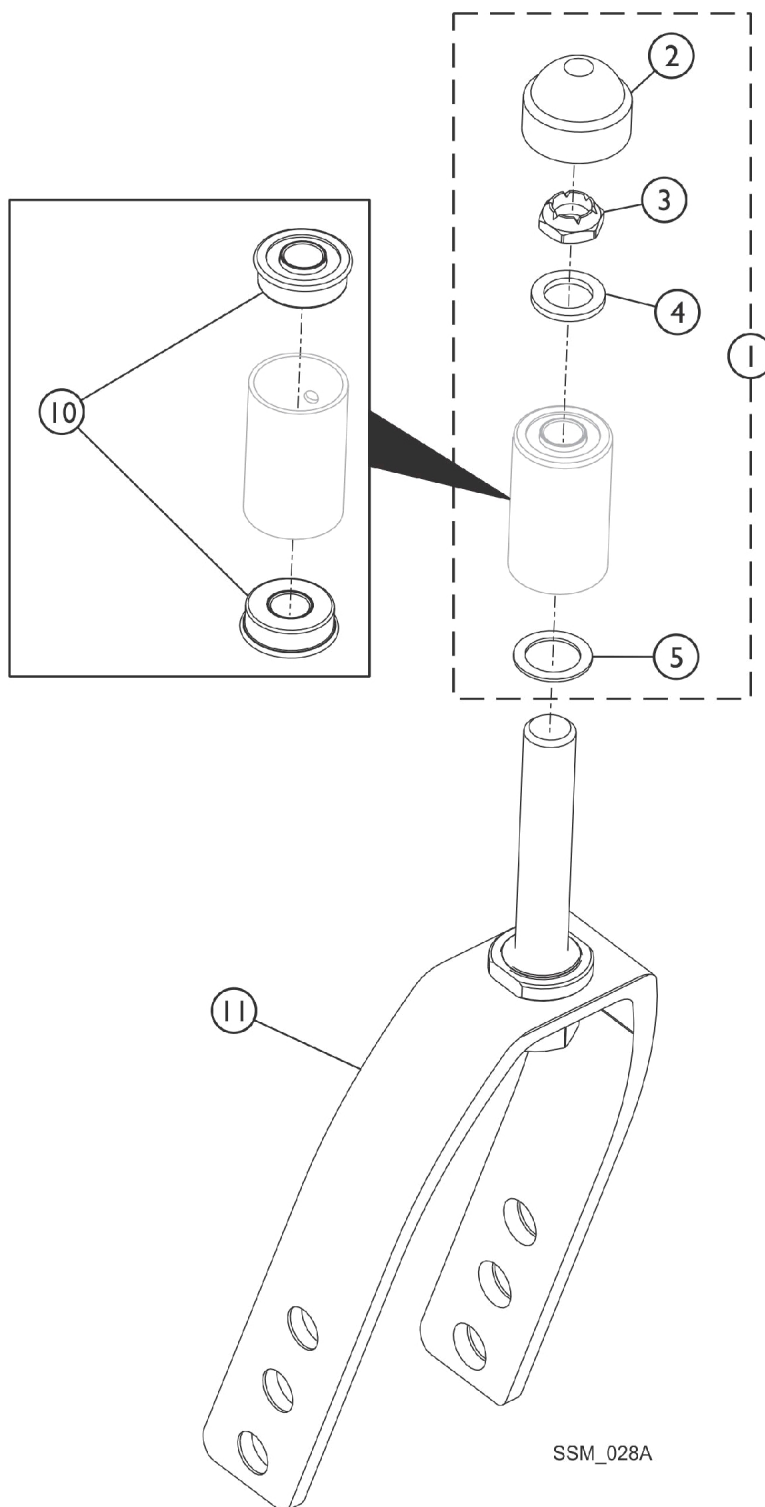
NOTE: If your chair was built with a serial # starting with "03H" or "03I", please contact an Invacare Parts Specialist for replacement parts at 1-800-333-6900 Ext. 3722.

AT903, 1290 & 1228

| Item Number | Description | AT903 Composite Urethane (8 x 1-1/4") | 1290 Composite Charcoal Grey Solid Rubber (8 x 1") | 1228 Composite Semi-Pneumatic (8 x 1-3/4") |
|---|--------------------------|---------------------------------------|--|--|
| 1 | Wheel Assembly - 1 piece | 1058649 See Note(s) A | 1086841 See Note(s) A | 1070811 See Note(s) C, A |
| 2 | Wheel Assembly - 1 pair | N/A | 1086842 See Note(s) B | 1071666 See Note(s) E, C |
| 3 | Tire | 1038157 | 1075458 See Note(s) D | N/A |
| 4 | Bearing | 1040102 | 1006049 | 1006049 |
| 5 | Hub Spacer | 1020592 | 1018982 | 1020592 |
| 6 | Front Axle | 57667P007 | 57667P007 | 57667P007 |
| 7 | Locknut, Axle | 20225X000 | 20225X000 | 20225X000 |
| 8 | Washer, Axle | N/A | 1026101 | 1016032 |
| NOTE: A - Includes Tire, Tube/Insert, Bearing and Spacer. B - Includes (2) Wheel Assemblies item #1 1086841, (2) Front Axles, (2) Locknuts and (4) Axle Washers. C - Required for 450lb weight capacity chair. D - Due to change in color effective 1/14/05, it is recommended that you order tires in pairs. E - Includes (2) ea. of item #11070811. | | | | |

Forks and Hardware

NOTE: If your chair was built with a serial # starting with "03H" or "03I", please contact an Invacare Parts Specialist for replacement parts at 1-800-333-6900 Ext. 3722.



Forks and Hardware

NOTE: If your chair was built with a serial # starting with "03H" or "03I", please contact an Invacare Parts Specialist for replacement parts at 1-800-333-6900 Ext. 3722.

| Item Number | Note | Part Number | Description | Quantity Per | |
|---|------|-------------|--|--------------|----------|
| | | | | Package | Assembly |
| 1 | A,D | 1089104 | Kit, Fork Hardware (Pair) | 1 | 1 |
| 2 | | | Cap, Head Tube, Black | 1 | 1 |
| 3 | | | Locknut (1/2-20) | 1 | 1 |
| 4 | | | Washer, Nylon (5/8 x 1 x 3/32") | 1 | 1 |
| 5 | | | Washer, Steel (17/32 x 3/4 x 1/32") | 1 | 1 |
| 2 | D | 1001843 | Cap, Head Tube, Black | 1 | 1 |
| 2 | D | 1131189 | Package, Head Tube Cap | 10 | 1 |
| 1 | E | 1194269 | Kit, Fork Hardware (Pair) | 1 | 1 |
| 2 | | | Cap, Head Tube, Black | 1 | 2 |
| 3 | | | Locknut (1/2-20) | 1 | 2 |
| 2 | F | 1192854 | Cap, Head Tube, Black | 1 | 1 |
| 10 | D | 1001801 | Bearing, Flange (1/2") | 1 | 2 |
| 10 | F | 1192848 | Bearing, Flange (5/8") | 1 | 2 |
| 11 | B,D | 1089103 | Fork and Stem, Aluminum, Black (8" Caster) | 1 | 1 |
| 11 | B,F | 1194266 | Fork and Stem, Aluminum, Black (8" Caster) | 1 | 1 |
| NOTE: A - Includes Items 2-5. B - Invacare recommends ordering the fork in a quantity of 2. D - Before 10/12/16 bearing size was 1/2" (Before 02/21/17 applies to stock models T4_WCB22 and T4_WCB24 only). E - After 10/11/16 bearing size changed to 5/8" (After 02/20/17 applies to stock models T4_WCB22 and T4_WCB24 only). Includes items 2 and 3. Item 4 and 5 not used After 10/11/16 and (After 02/20/17 for stock models T4_WCB22 and T4_WCB24 only). F - After 10/11/16. | | | | | |

Rear Wheels

NOTE: If your chair was built with a serial # starting with "03H" or "03I", please contact an Invacare Parts Specialist for replacement parts at 1-800-333-6900 Ext. 3722.

| Model Number | Wheel Style | Single Wheel Assembly | Tire | Tube/Insert | Bearing | Bearing Spacer |
|---|--|---------------------------------|------------------------------|-------------|-----------|----------------|
| U2222C | Composite Corded Urethane (24 x 1") 5/8" Axle (9-Spoke) | 1121043 See Note(s) A | 1118209 See Note(s) C | N/A | 40117X006 | 1019695-NLA |
| 5244BK | Composite Pneumatic w/Flat Free Insert (24 x 1-3/8") 5/8" Axle (7-Spoke) | 1045281 See Note(s) B, A | 40176X060 | 1045280 | 40117X006 | 1019695-NLA |
| U2244BK | Composite Urethane (24 x 1-1/4") 5/8" Axle (7-Spoke) | 1034130 See Note(s) A | 1026904 | N/A | 40117X006 | 1019695-NLA |
| NOTE: A - Includes Tire, Tube/Insert, Bearing and Spacer. B - Required for 450lb weight capacity. C - Corded Tires maybe more difficult to stretch over the wheel rim. The complete wheel assembly that has the tire and wheel rim preassembled maybe advisable NOTE: Effective 3/27/06, the U2222 wheel assembly is no longer available for this model. | | | | | | |

Rear Wheel and Handrim Assemblies - 24" Wheel with 5/8" Axle

| Wheel Style | Description | Part Number |
|--|--|------------------------------|
| U2222C | Assembly, Wheel 24", 5/8" Axle, Composite Urethane - Composite Handrim | 1133298 See Note(s) A |
| NOTE: A - Non-Corded Tire 24 x 1" Low Profile Urethane Tire was replaced with a Corded Tire as of 11/16/09. For chairs manufactured before 11/16/09, it is recommended to order (2) ea. in quantity to match | | |

Wheel Conversion Kits

| Part Number | Description | Quantity |
|------------------------------|-------------------------------|----------|
| 1121459 See Note(s) A | Kit, 350Lb Wheel Package (T4) | 1 Pair |
| 1121460 See Note(s) B | Kit, 450Lb Wheel Package (T4) | 1 Pair |

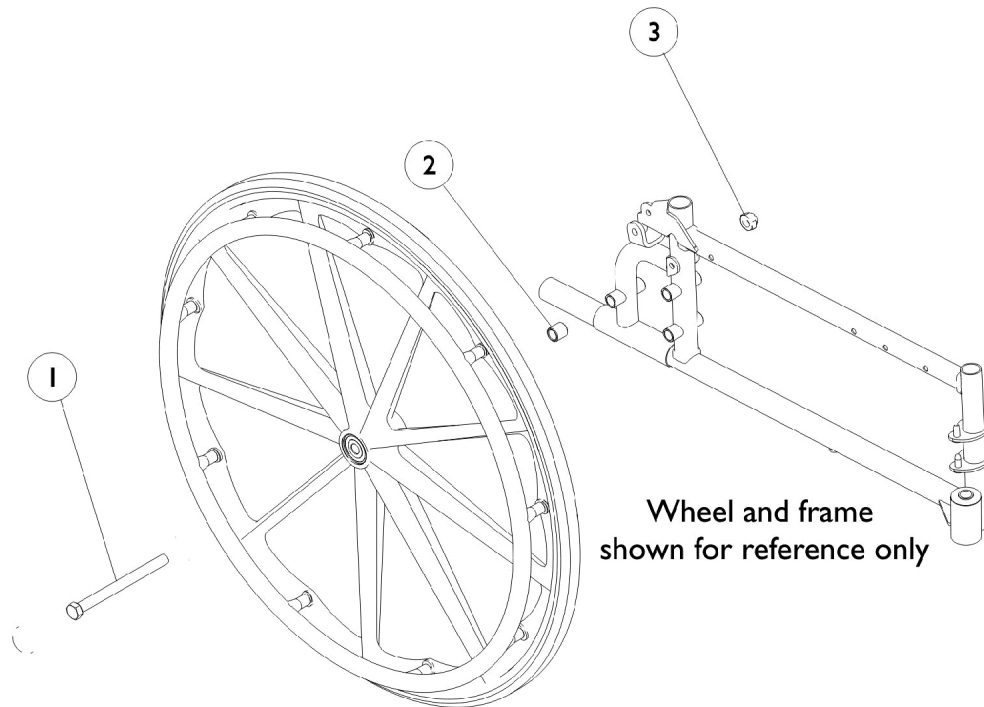
Rear Wheels

NOTE: If your chair was built with a serial # starting with "03H" or "03I", please contact an Invacare Parts Specialist for replacement parts at 1-800-333-6900 Ext. 3722.

| | |
|-------|---|
| NOTE: | A - Kit contains 2 - U2222C Wheel assemblies with Alum. Clear Anodized Handrims, 2 - AT903 Caster assemblies and a 350lb weight capacity decal. B - Kit contains 2 - 5244BK Wheel assemblies with Alum. Clear Anodized Handrims, 2 - 1228 Caster assemblies and a 450lb weight capacity decal. |
|-------|---|

Rear Wheel Hardware

NOTE: If your chair was built with a serial # starting with "03H" or "03I", please contact an Invacare Parts Specialist for replacement parts at 1-800-333-6900 Ext. 3722.



| Item Number | Note | Part Number | Description | Quantity Per | |
|-------------------------------|------|-------------|---------------------------|--------------|----------|
| | | | | Package | Assembly |
| 1 | A | 47203X020 | Axle (5/8-18 x 4-3/4") | 1 | 1 |
| 2 | | 47183X021 | Spacer (5/8 x 7/8 x 3/4") | 1 | 1 |
| 3 | | 60030X000 | Locknut (5/8-18) | 1 | 1 |
| | | 1034111 | Wheel Hardware - Rear | 1 | 1 |
| NOTE: A - Includes items 1-3. | | | | | |

Non-Projection Handrims and Attaching Hardware

NOTE: If your chair was built with a serial # starting with "03H" or "03I", please contact an Invacare Parts Specialist for replacement parts at 1-800-333-6900 Ext. 3722.

As of 8/11/15 Chrome Handrims were replaced by Alum. Clear Anodized and Steel Black 34P was replaced by Alum. Black Anodized Handrims.

Composite (COM)

| Wheel Style | Wheel Type | Handrim Only | Attaching Points | Attaching Hardware Kit |
|-------------|---|--------------|------------------|--------------------------|
| 5244BK | 24" Heavy Duty Composite Pneumatic w/Flat Free Insert | 1064036 | 7 | 1065790 See Note(s) A |
| U2222 | 24" Composite Urethane Tire | 1063919 | 9 | 1042074 See Note(s) A |
| U2222C | 24" Composite Urethane Tire | 1063919 | 9 | 1042074 |

NOTE: A - Hardware kit contains hardware for (1) handrim. See category titled, "Non-Projection Handrims Attaching Hardware" for more details.

Chrome Plated (CHDRM)

| Wheel Style | Wheel Type | Handrim Only | Attaching Points | Attaching Hardware Kit |
|-------------|--|--------------|------------------|--------------------------|
| U2222 | 24" Composite Urethane Tire | 1055272-NLA | 6 | 1042074 See Note(s) A |
| U2222C | 24" Composite Urethane Tire | 1055272-NLA | 6 | 1042074 See Note(s) A |
| U2222BK | 24" Composite Urethane Tire | 1055272-NLA | 6 | 1042074 See Note(s) A |
| U2244BK | 24" Composite Urethane w/Treaded Tire | 1054966 | 7 | 1025153 See Note(s) A |
| 5244BK | 24" Heavy-Duty Composite Pneumatic w/ Flat Free Insert | 1054966 | 7 | 1025153 See Note(s) A |

NOTE: A - Hardware kit contains hardware for (1) handrim. See category titled, "Non-Projection Handrims Attaching Hardware" for more details.

As of 8/11/15 Chrome Handrims were replaced by Alum. Clear Anodized and Alum. Black 34P was replaced by Alum. Black Anodized Handrims.

Non-Projection Handrims and Attaching Hardware

NOTE: If your chair was built with a serial # starting with "03H" or "03I", please contact an Invacare Parts Specialist for replacement parts at 1-800-333-6900 Ext. 3722.

As of 8/11/15 Chrome Handrims were replaced by Alum. Clear Anodized and Steel Black 34P was replaced by Alum. Black Anodized Handrims.

Aluminum - Clear Anodized

| Wheel Style | Wheel Type | Handrim Only | Attaching Points | Attaching Hardware Kit |
|---|--|--------------|------------------|--------------------------|
| U2222 | 24" Composite Urethane Tire | 1183681 | 6 | 1042074 See Note(s) A |
| U2222C | 24" Composite Urethane Tire | 1183681 | 6 | 1042074 See Note(s) A |
| U2222BK | 24" Composite Urethane Tire | 1183681 | 6 | 1042074 See Note(s) A |
| U2244BK | 24" Composite Urethane w/Treaded Tire | 1183680 | 7 | 1025153 See Note(s) A |
| 5244BK | 24" Heavy-Duty Composite Pneumatic w/ Flat Free Insert | 1183680 | 7 | 1025153 See Note(s) A |
| NOTE: A - Hardware kit contains hardware for (1) handrim. See category titled, "Non-Projection Handrims Attaching Hardware" for more details. | | | | |

Steel - Flat Black 34P

| Wheel Type | Handrim Only | Attaching Points | Attaching Hardware Kit |
|--|------------------------------|------------------|--------------------------|
| U2222 24" Composite Urethane Tire | 1120063-NLA See Note(s) B | 6 | 1042074 See Note(s) A |
| U2222C | 1120063-NLA See Note(s) B | 6 | 1042074 See Note(s) A |
| U2244BK 24" Composite Urethane Treaded Tire | 1119821-NLA See Note(s) C | 7 | 1025153 See Note(s) A |
| 5244BK 24" Heavy Duty Composite w/Flat Free Insert | 1119821-NLA See Note(s) C | 7 | 1025153 See Note(s) A |
| NOTE: A - Hardware kit contains enough hardware for (1) handrim. See category titled, "Non-Projection Handrims Attaching Hardware" for more details. B - NLA. See Black Anodized Handrim Chart and order part #1186220. C - NLA. See Black Anodized Handrim Chart and order part #1186219. | | | |
| NOTE: When replacing handrims for chairs built before 12/17/99 order in pairs. Handrim color has changed from Pewter to Flat Black. | | | |
| NOTE: As of 8/11/15 Chrome Handrims were replaced by Alum. Clear Anodized and Alum. Black 34P was replaced by Alum. Black Anodized Handrims. | | | |

Non-Projection Handrims and Attaching Hardware

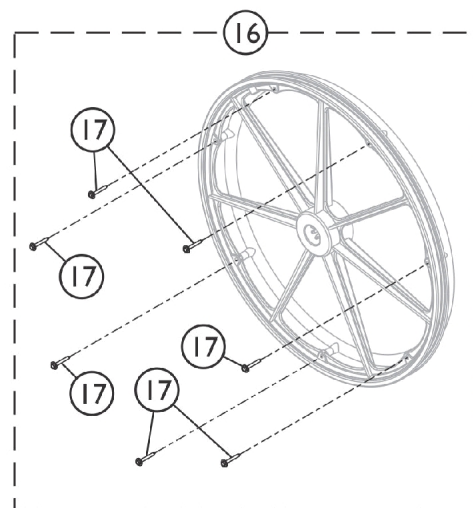
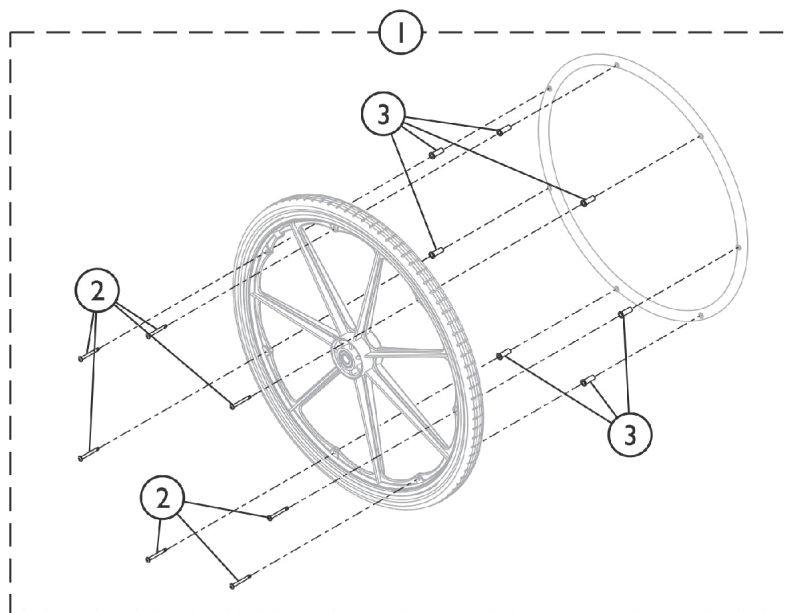
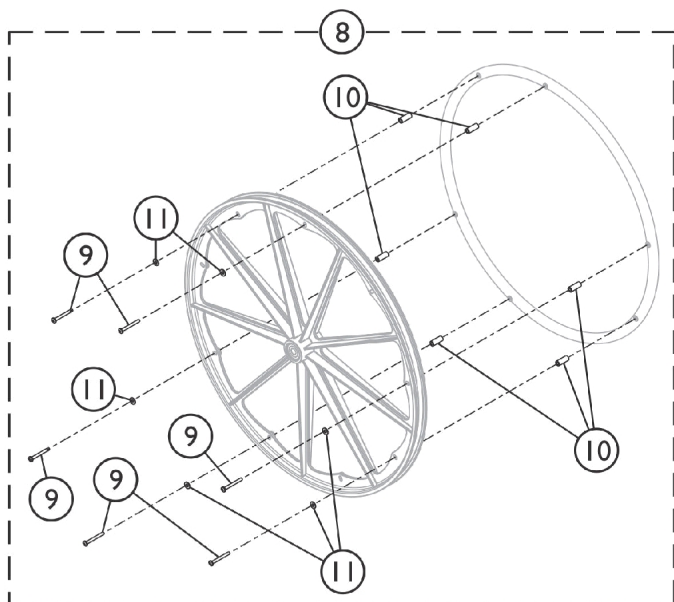
NOTE: If your chair was built with a serial # starting with "03H" or "03I", please contact an Invacare Parts Specialist for replacement parts at 1-800-333-6900 Ext. 3722.

As of 8/11/15 Chrome Handrims were replaced by Alum. Clear Anodized and Steel Black 34P was replaced by Alum. Black Anodized Handrims.

Aluminum - Black Anodized

| Wheel Type | Handrim Only | Attaching Points | Attaching Hardware Kit |
|--|--------------|------------------|--------------------------|
| U2222 24" Composite Urethane Tire | 1186220 | 6 | 1042074 See Note(s) A |
| U2222C | 1186220 | 6 | 1042074 See Note(s) A |
| U2244BK 24" Composite Urethane Treaded Tire | 1186219 | 7 | 1025153 See Note(s) A |
| 5244BK 24" Heavy Duty Composite w/Flat Free Insert | 1186219 | 7 | 1025153 See Note(s) A |
| NOTE: A - Hardware kit contains enough hardware for (1) handrim. See category titled, "Non-Projection Handrims Attaching Hardware" for more details. | | | |

Non-Projection Handrim Attaching Hardware



SSM_034A

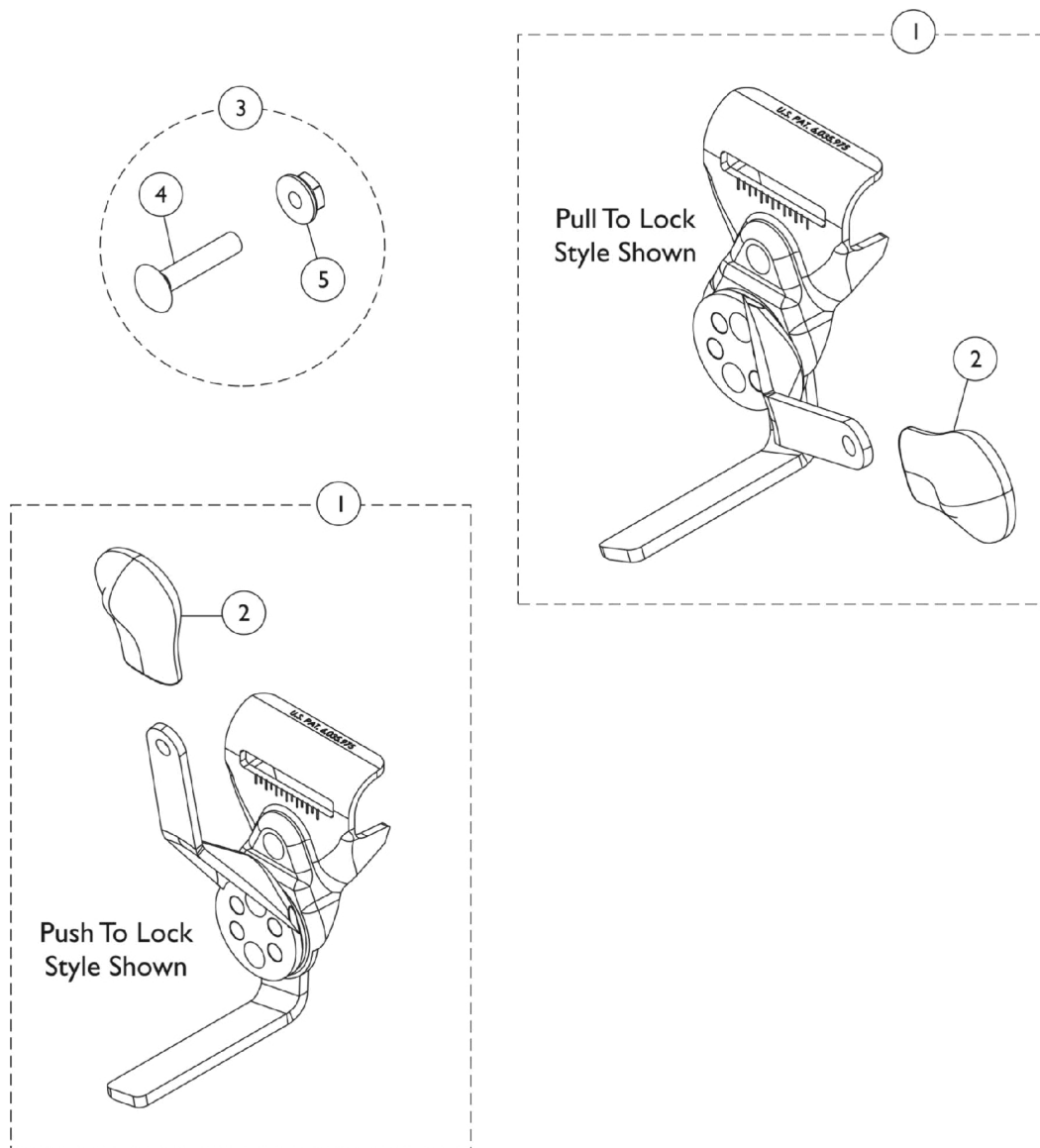
Non-Projection Handrim Attaching Hardware

| Item Number | Note | Part Number | Description | Quantity Per | |
|--|------|-------------|---|--------------|----------|
| | | | | Package | Assembly |
| 1 | A | 1025153 | Hardware, Handrim Attaching - 7 PT | 1 | 1 |
| 2 | | 1007375 | Screw, Phillips Pan Head w/ Patch (#10-32 x 1-3/4") | 1 | 7 |
| 3 | | 1016438 | Spacer (1/4 x 11/32 x 15/16") | 1 | 7 |
| 8 | B | 1042074 | Hardware, Handrim Attaching - 6 PT. | 1 | 1 |
| 9 | | 1007375 | Screw, Phillips Pan Head w/ Patch (#10-32 x 1-3/4") | 1 | 6 |
| 10 | | 1012649 | Spacer (3/16 x 3/8 x 15/16") | 1 | 6 |
| 11 | | 1013218 | Washer (#10 Flat) | 1 | 6 |
| 16 | C | 1065790 | Hardware, Handrim Attaching - 7 PT. | 1 | 1 |
| 17 | | 1098755 | Screw, Hex Head SEMS (#8-10 x 1-1/2") | 1 | 7 |
| NOTE: A - Includes items 2 and 3. B - Includes items 9-11. C - Includes item 17. | | | | | |

Disk Style Wheel Locks

(Before 4/15/07)

NOTE: If your chair was built with a serial # starting with "03H" or "03I", please contact an Invacare Parts Specialist for replacement parts at 1-800-333-6900 Ext. 3722.



Disk Style Wheel Locks

(Before 4/15/07)

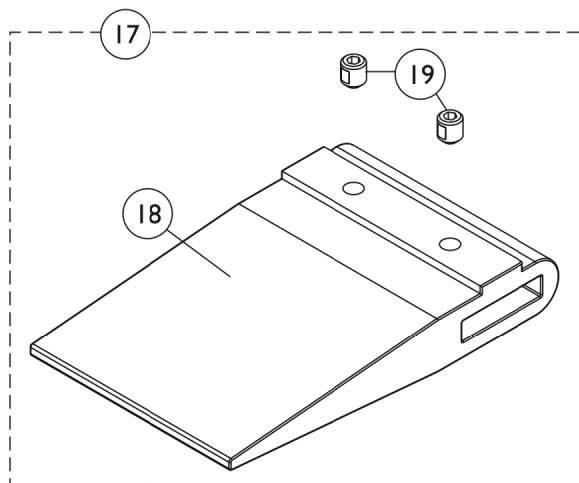
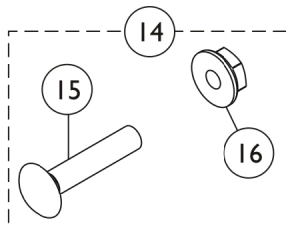
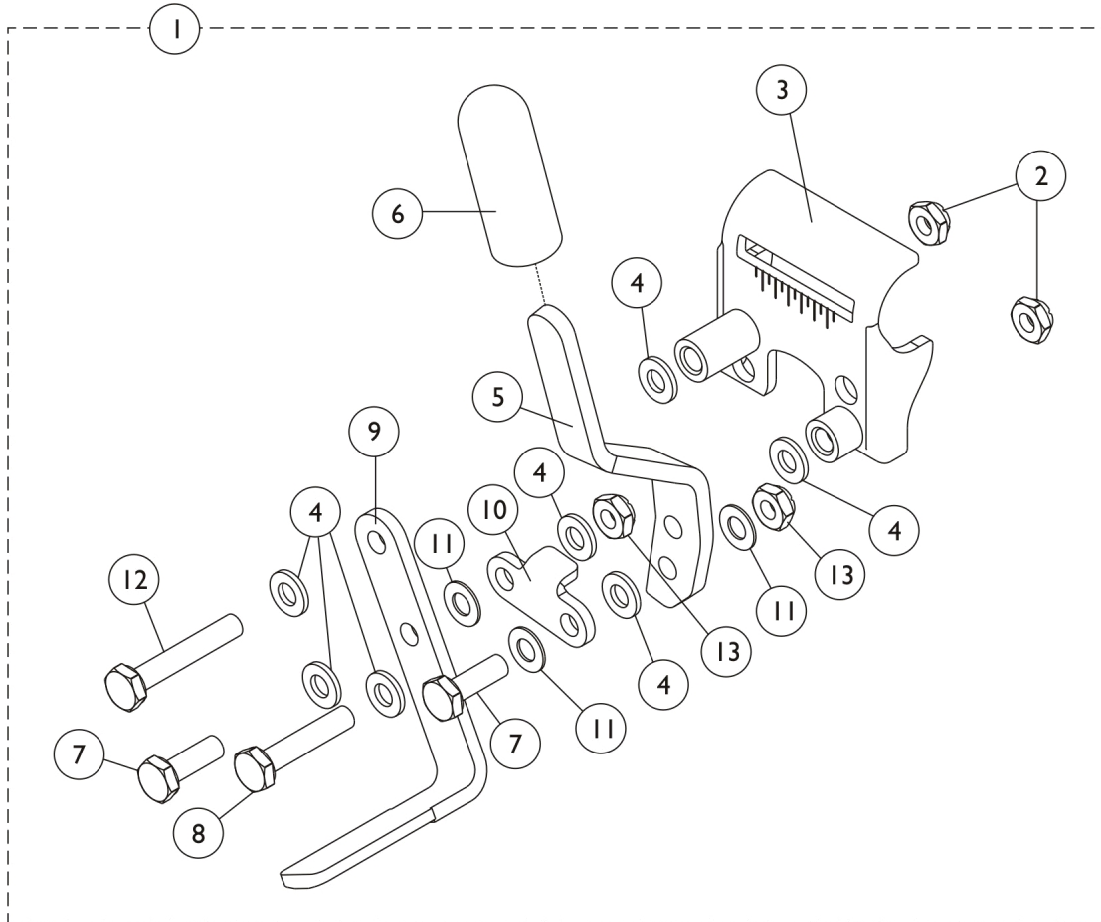
NOTE: If your chair was built with a serial # starting with "03H" or "03I", please contact an Invacare Parts Specialist for replacement parts at 1-800-333-6900 Ext. 3722.

| Item Number | Note | Part Number | Description | Quantity Per | |
|---|--------|-------------|---|--------------|----------|
| | | | | Package | Assembly |
| 1 | C,F,F1 | 1110225-NLA | NLA - Wheel Lock Assembly, Disk Push to Lock, Black - Right | 1 | 1 |
| 1 | C,F,F1 | 1110226-NLA | NLA - Wheel Lock Assembly, Disk Push to Lock, Black - Left | 1 | 1 |
| 1 | D,F,F1 | 1110227-NLA | NLA - Wheel Lock Assembly, Disk Pull to Lock, Black - Right | 1 | 1 |
| 1 | D,F,F1 | 1110228-NLA | NLA - Wheel Lock Assembly, Disk Pull to Lock, Black - Left | 1 | 1 |
| 2 | E | 1110160-NLA | NLA - Tip, Plastic Wheel Lock Handle, Black | 1 | 1 |
| 3 | A | 1017677 | Kit, Hardware, Wheel Lock (Pair) | 1 | 1 |
| 4 | | | Nut, Hex Flang (1/4-20) | 1 | 2 |
| 5 | | | Bolt, Carriage (1/4-20 x 1-1/4") | 1 | 2 |
| | B,E,G | 1058900 | Wheel Lock Extension Handle Assembly, Black (8") | 1 | 1 |
| | B,C,G | 1101452 | Wheel Lock Assembly, Push to Lock, Black - Right | 1 | 1 |
| | B,C,G | 1101453 | Wheel Lock Assembly, Push to Lock, Black - Left | 1 | 1 |
| | B,D,G | 1101454 | Wheel Lock Assembly, Pull to Lock, Black - Right | 1 | 1 |
| | B,D,G | 1101455 | Wheel Lock Assembly, Pull to Lock, Black - Left | 1 | 1 |
| <p>NOTE: A - Includes items 4 and 5 each with a quantity of 2. B - Not shown. C - Standard on Adult Seat to Floor models. D - Standard on Hemi Seat to Floor models. E - Used on Disk-Style Wheel Locks. F - Disk Style Wheel Locks are no longer available as a Service Part. Must convert to Link-Pivot Style Wheel Locks listed. Order Right/Left side to match. Can use existing attaching hardware. F1 - Additional Wheel Lock information can be found under category titled "Wheel Locks - Link-Pivot Style (After 4/14/07)". G - Link-Pivot Style Wheel Locks</p> | | | | | |

Link-Pivot Style Wheel Locks

(After 4/14/07)

NOTE: Due to the possibility of various manufacturing dates for Tracer IV Wheelchairs built with a serial # starting with "03H" or "03I", replacement parts will need to be ordered thru an Invacare Parts Specialist at 1-800-333-6900.



Link-Pivot Style Wheel Locks

(After 4/14/07)

NOTE: Due to the possibility of various manufacturing dates for Tracer IV Wheelchairs built with a serial # starting with "03H" or "03I", replacement parts will need to be ordered thru an Invacare Parts Specialist at 1-800-333-6900.

| Item Number | Note | Part Number | Description | Quantity Per | |
|-------------|------|-------------|--|--------------|----------|
| | | | | Package | Assembly |
| 1 | A,G | 1101452 | Wheel Lock Assembly, Push to Lock, Black - Right | 1 | 1 |
| 1 | A,G | 1101453 | Wheel Lock Assembly, Push to Lock, Black - Left | 1 | 1 |
| 1 | A,H | 1101454 | Wheel Lock Assembly, Pull to Lock, Black - Right | 1 | 1 |
| 1 | A,H | 1101455 | Wheel Lock Assembly, Pull to Lock, Black - Left | 1 | 1 |
| 2 | | 1025195 | Locknut (1/4-20) | 1 | 2 |
| 3 | | 1053284 | Bracket, Mounting, Black - Right | 1 | 1 |
| 3 | | 1053285 | Bracket, Mounting, Black - Left | 1 | 1 |
| 4 | | 1026033 | Washer, Nylon (1/4 x 1/2 x 1/16") | 1 | 7 |
| 5 | | 1031780-NLA | NLA - Handle, Pull/ Lock, Black - Right | 1 | 1 |
| 5 | | 1031781-NLA | NLA - Handle, Pull/ Lock, Black - Left | 1 | 1 |
| 5 | | 1102134 | Handle, Push/ Lock, Black - Right | 1 | 1 |
| 5 | | 1102135 | Handle, Push/ Lock, Black - Left | 1 | 1 |
| 6 | | 47376X024 | Tip, Rubber Wheel Lock Handle, Black | 1 | 1 |
| 7 | | 1028687 | Screw, Hex Head (1/4-28 x 3/4") | 1 | 2 |
| 8 | | 1021406 | Screw, Hex Head (1/4-20 x 1-1/4") | 1 | 1 |
| 9 | | 1102133 | Shoe, Wheel Lock | 1 | 1 |
| 10 | | 1102132-NLA | NLA - Link, Black | 1 | 1 |
| 11 | | 1026103-NLA | NLA - Washer, Nylon (1/4 x 1/2 x 1/32") | 1 | 3 |
| 12 | | 1030949 | Screw, Hex Head (1/4-20 x 1-1/2") | 1 | 1 |
| 13 | | 1025765 | Locknut (1/4-28) | 1 | 2 |
| 14 | E | 1017677 | Kit, Hardware, Wheel Lock (Pair) | 1 | 1 |
| 15 | | | Bolt, Carriage (1/4-20 x 1-1/4") | 1 | 2 |
| 16 | | | Nut, Hex Flang (1/4-20) | 1 | 2 |
| 17 | B,C | 1067279 | Kit, Wheel Lock Shoe Spacer | 1 | 1 |
| 18 | | | Spacer, Wheel Lock Shoe (2-7/16") | 1 | 1 |
| 19 | | | Screw, Set Socket Cup Point (#8-32 x 3/16") | 1 | 2 |
| 17 | C,D | 1048656 | Kit, Wheel Lock Shoe Spacer | 1 | 1 |
| 18 | | | Spacer, Wheel Lock Shoe (1-45/64") | 1 | 1 |
| 19 | | | Screw, Set Socket Cup Point (#8-32 x 3/16") | 1 | 2 |
| | F | 1058900 | Wheel Lock Extension Handle Assembly, Black (8") | 1 | 1 |

NOTE: A - Includes items 2-13.
B - Required for Chairs with 20" Rear Wheels and Amputee Attachments or SX5 Recliners with 24" Rear Wheels.
C - Includes items 15-16.
D - Required for Chairs with 20" Rear Wheels (no Amputee Attachments) or 22" Rear Wheels with Amputee Attachments.
E - Includes items 18 and 19.
F - Not shown. Includes: 1 each Extension Handle and Rubber Tip. Chrome is No Longer Available.
G - Standard on Adult Seat to Floor models
H - Standard on Hemi Seat to Floor models

Calf Pads

NOTE: If your chair was built with a serial # starting with "03H" or "03I", please contact an Invacare Parts Specialist for replacement parts at 1-800-333-6900 Ext. 3722.

| Part Number | Description | Quantity |
|--|--|----------|
| 8881091819 See Note(s) A | Legrest Pad with Hardware | 1 |
| 1091800 See Note(s) A | Legrest Pad (Plastic) with Hardware | 1 |
| 40163X008 | Screw, Phillips Head (#10-32 x 11/16") | 2 |
| NOTE: A - Specify upholstery color when ordering. See Category titled "Upholstery Colors." | | |

Footrest and Legrest Accessories

NOTE: If your chair was built with a serial # starting with "03H" or "03I", please contact an Invacare Parts Specialist for replacement parts at 1-800-333-6900 Ext. 3722.

H-Strap & Calf Strap

| Part Number | Description | Package Quantity |
|-------------|------------------------------|------------------|
| 1032002 | H-Strap - 18" Wide Chairs | 1 |
| 1032001 | H-Strap - 20-22" Wide Chairs | 1 |
| 1068609-NLA | Heel Strap (22 - 24" Wide) | 1 |
| 1121290 | Calf Strap - 18" W | 1 |
| 1102745 | Calf Strap - 20" W | 1 |
| 1102746 | Calf Strap - 22" W | 1 |
| 1102747 | Calf Strap - 24" W | 1 |

Non-Removable Device

| Part Number | Description |
|-------------|----------------------|
| 1143050 | Non-Removable Device |

Footrest and Legrest Accessories

NOTE: If your chair was built with a serial # starting with "03H" or "03I", please contact an Invacare Parts Specialist for replacement parts at 1-800-333-6900 Ext. 3722.

Heel Loops

| Part Number | Description | Package Quantity |
|--------------------------------------|---|------------------|
| 1035917-NLA See Note(s) A | Heel Loops, 16-24" Wide Chairs w/Composite Footplates | 1 pair |
| 1035929 See Note(s) A | Heel Loops w/ Ankle Straps, 16-24" Wide Chairs w/Aluminum Footplates | 1 pair |
| 1035918 See Note(s) A | Heel loops w/Ankle Straps, 16-24" W Chairs | 1 pair |
| 1035926 | Attaching Hardware for Aluminum Footplates | 1 pair |
| 1035927 | Attaching Hardware for Composite Footplates | 1 pair |
| NOTE: A - Does not include hardware. | | |

Front Riggings - Bolt Through and Spring Button Kits

NOTE: If your chair was built with a serial # starting with "03H" or "03I", please contact an Invacare Parts Specialist for replacement parts at 1-800-333-6900 Ext. 3722.

Bolt Through & Spring Button Kits

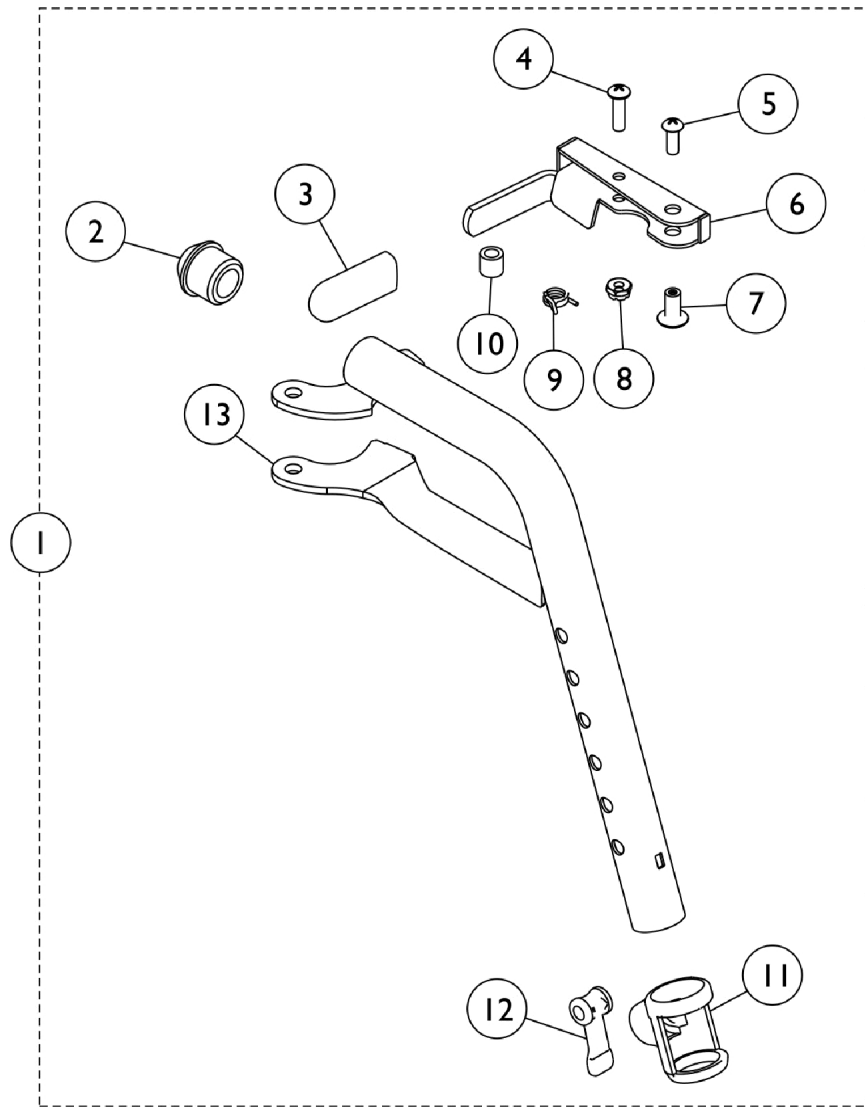
| Style | Part Number | Quantity per Package | Quantity Per Footrest (pair) | Quantity Per Legrest (pair) |
|----------------------------|--------------------------|----------------------|------------------------------|-----------------------------|
| Spring Button Hardware Kit | 1188335 See Note(s) A | 2 | 2 | 4 |
| Bolt Through Hardware Kit | 1101776 See Note(s) A | 2 | 2 | 2 |
| Tool Kit | 1058407 See Note(s) B | 1 | N/A | N/A |

NOTE: A - Kit includes 2 ea. Double Spring Buttons
B - Kit includes (2) Hex Keys and (2) Wrenches. The Bolt Thru Hardware uses the Tool Kit for installation.

Footrest Support Assembly

T93H Series Before 5/16/19

NOTE: If your chair was built with a serial # starting with "03H" or "03I", please contact an Invacare Parts Specialist for replacement parts at 1-800-333-6900 Ext. 3722.



Footrest Support Assembly

T93H Series Before 5/16/19

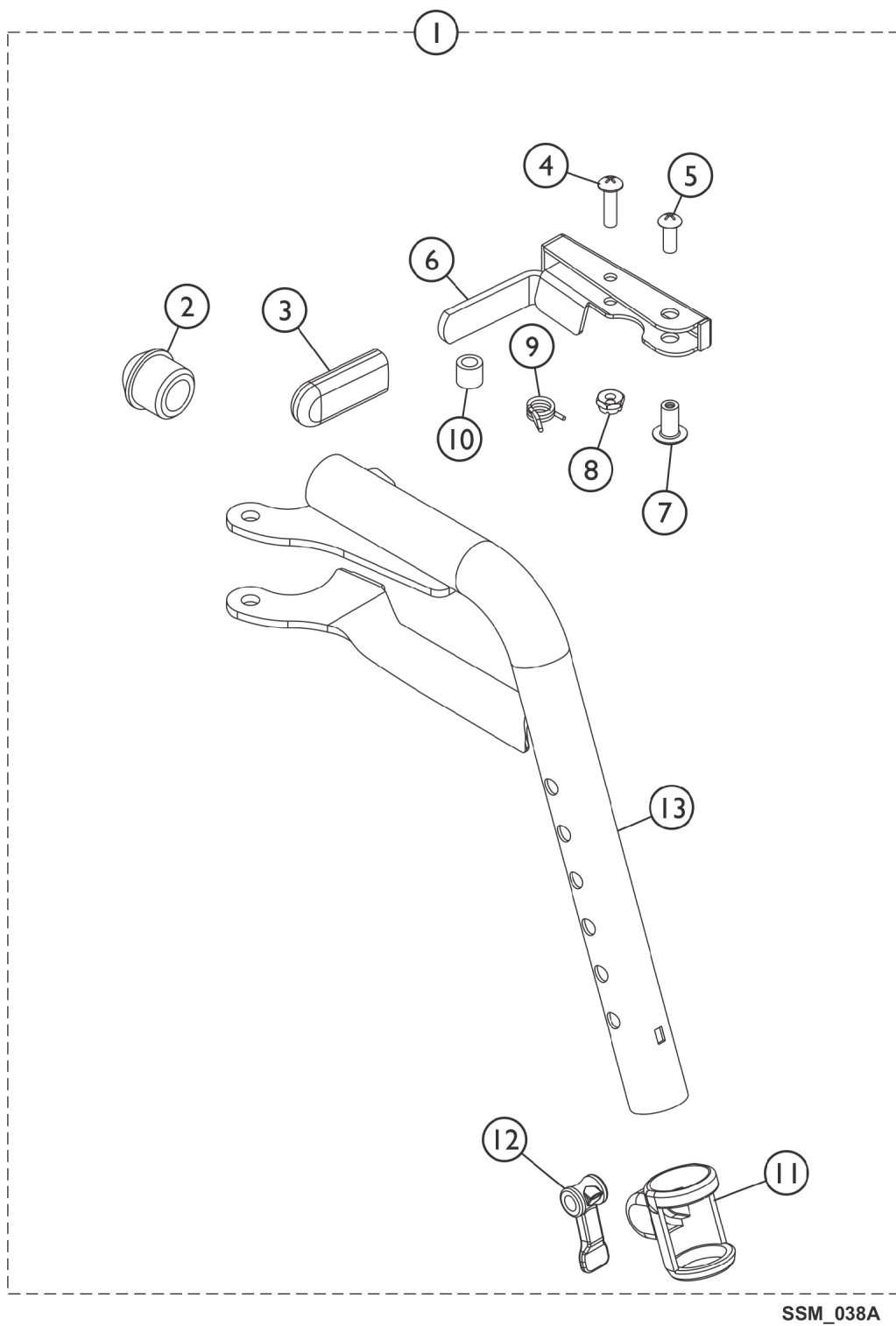
NOTE: If your chair was built with a serial # starting with "03H" or "03I", please contact an Invacare Parts Specialist for replacement parts at 1-800-333-6900 Ext. 3722.

| Item Number | Note | Part Number | Description | Quantity Per | |
|-------------|------|-------------|--|--------------|----------|
| | | | | Package | Assembly |
| 1 | A | 1111274 | Footrest Support Assembly, Hemi, Black - Right | 1 | 1 |
| 1 | A | 1111275 | Footrest Support Assembly, Hemi, Black - Left | 1 | 1 |
| 1 | B | 8881180774 | Footrest Support Assembly, Hemi, Color - Right | 1 | 1 |
| 1 | B | 8881180775 | Footrest Support Assembly, Hemi, Color - Left | 1 | 1 |
| 2 | | 1020719 | Anti-Rattle, Black | 1 | 1 |
| 3 | | 1006490-NLA | NLA - Tip, Plastic, Black | 1 | 1 |
| 4 | | 40163X008 | Screw, Phillips Pan Head (#10-32 x 11/16") | 1 | 1 |
| 5 | | 40163X002 | Screw, Phillips Round Head (#10-32 x 1/2") | 1 | 1 |
| 6 | C,D | 1110176-NLA | NLA - Handle, Release, Chrome - Right | 1 | 1 |
| 6 | C,D | 1110177-NLA | NLA - Handle, Release, Chrome - Left | 1 | 1 |
| 6 | E | 1110178 | Handle, Release, Black - Right | 1 | 1 |
| 6 | E | 1110179 | Handle, Release, Black - Left | 1 | 1 |
| 7 | | 67005X000 | Rivnut (#10-32) | 1 | 1 |
| 8 | | 60279X003 | Locknut (#10-32) | 1 | 1 |
| 9 | | 1008935 | Spring, Release - Right | 1 | 1 |
| 9 | | 1008936 | Spring, Release - Left | 1 | 1 |
| 10 | | 47565X057 | Bushing (7/32 x 3/8 x 11/32") | 1 | 1 |
| 11 | | 1048085 | Housing, Cam | 1 | 1 |
| 12 | | 1048086 | Lever, Cam, Black | 1 | 1 |
| 13 | C,D | 1111270-NLA | NLA - Tube, Footrest Support, Hemi, Chrome - Right | 1 | 1 |
| 13 | C,D | 1111271-NLA | NLA - Tube, Footrest Support, Hemi, Chrome - Left | 1 | 1 |
| 13 | E | 1111268 | Tube, Footrest, Support, Hemi, Black - Right | 1 | 1 |
| 13 | E,F | 1111269 | NLA - Tube, Footrest, Support, Hemi, Black - Left | 1 | 1 |

NOTE: A - Includes Items 2-13. After 10/14/14 color changed from Chrome to Black. It is recommended to order both the right and left side to match.
B - Includes items 2-13. Specify 71P Silver Vein frame finish when ordering.
C - Item #6 and 13 are not available for sale on color frame models. See item #1 as a replacement.
D - Before 10/15/14 color was Chrome.
E - After 10/14/14 color is Black.
F - Item #13 part number 1111269 is no longer available. Order item #1 as a replacement.

Front Riggings - Footrest Support Assembly

T93H Series After 5/15/19



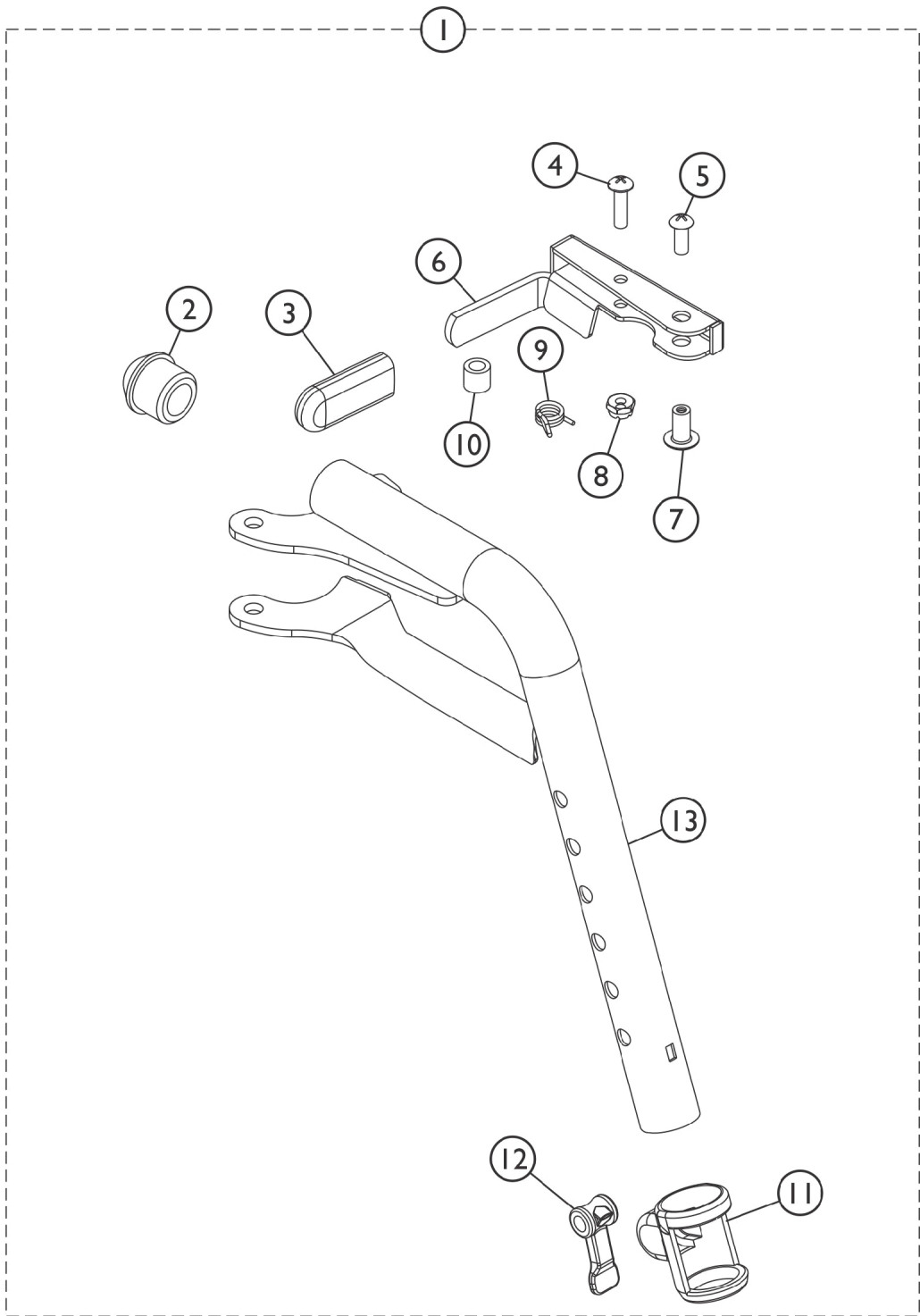
Front Riggings - Footrest Support Assembly

T93H Series After 5/15/19

| Item Number | Note | Part Number | Description | Quantity Per | |
|---|------|-------------|--|--------------|----------|
| | | | | Package | Assembly |
| 1 | A,B | 1192525 | Footrest Support Assembly, Hemi, Black - Right | 1 | 1 |
| 1 | A,B | 1192526 | Footrest Support Assembly, Hemi, Black - Left | 1 | 1 |
| 2 | | 1020719 | Anti-Rattle, Black | 1 | 1 |
| 3 | | 1006490-NLA | NLA - Tip, Plastic, Black | 1 | 1 |
| 4 | | 1025716 | Screw, Phillips Pan Head (#10-32 x 11/16") | 1 | 1 |
| 5 | | 1026114 | Screw, Phillips Pan Head (#10-32 x 1/2") | 1 | 1 |
| 6 | | 1180757 | Handle, Release, Black - Right | 1 | 1 |
| 6 | | 1180758 | Handle, Release, Black - Left | 1 | 1 |
| 7 | | 1028846 | NLA - Rivnut (#10-32) | 1 | 1 |
| 8 | | 1025735 | Locknut (#10-32) | 1 | 1 |
| 10 | | 47565X057 | Bushing (7/32 x 3/8 x 11/32") | 1 | 1 |
| 11 | | 1048085 | Housing, Cam | 1 | 1 |
| 12 | | 1048086 | Lever, Cam, Black | 1 | 1 |
| NOTE: A - Includes Items 2 thru 13. Item #9 is not available. Order item #1 as a replacement. | | | | | |
| B - NOTE: Footrest Support Tube item #13 is not available, order item #1 as a replacement. | | | | | |

Front Riggings - Footrest Support Assembly

GT93H Series



SSM_038A

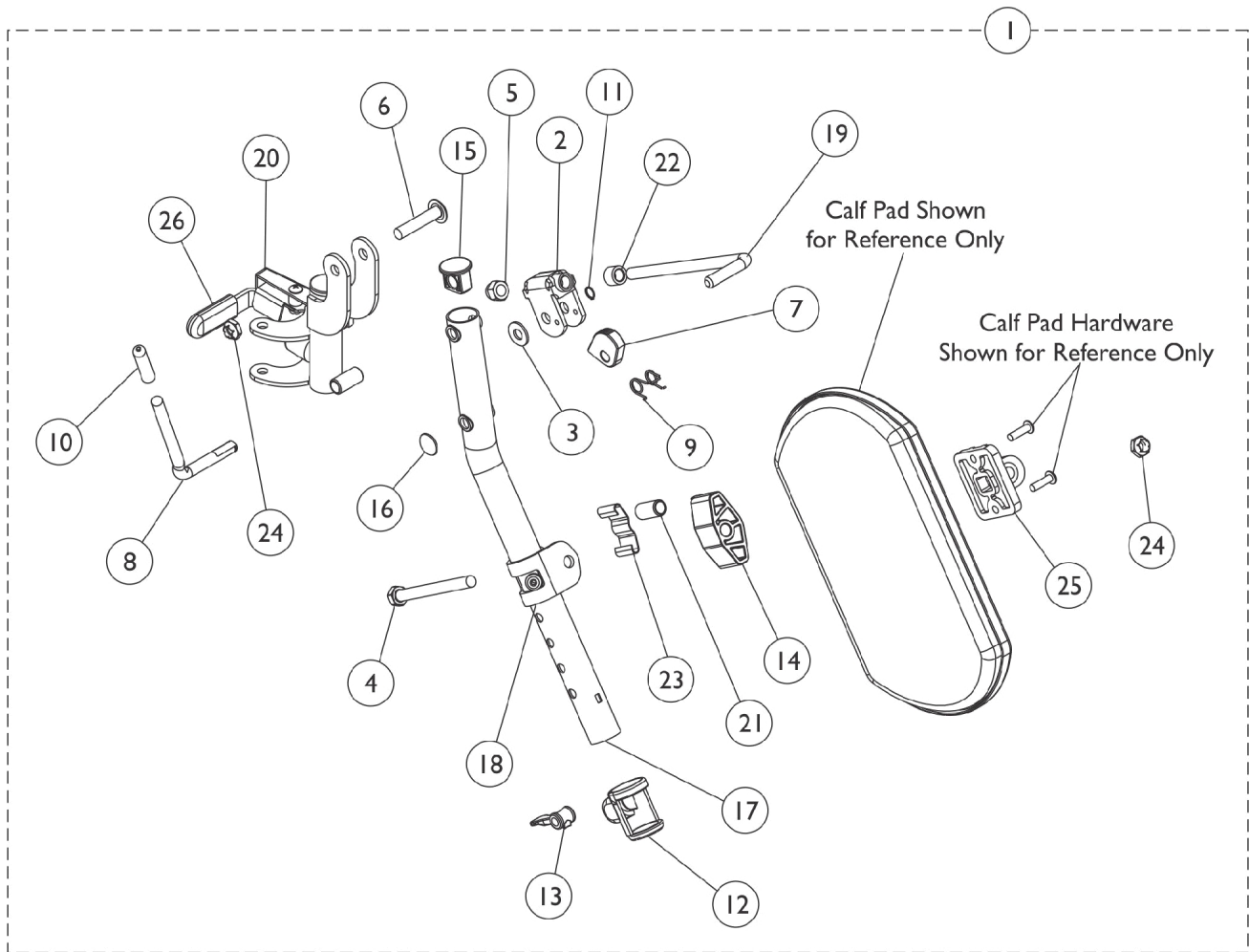
Front Riggings - Footrest Support Assembly GT93H Series

| Item Number | Note | Part Number | Description | Quantity Per | |
|--|-------|-------------|--|--------------|----------|
| | | | | Package | Assembly |
| 1 | A,B,C | 8881194312 | Footrest Support Assembly, Hemi, Color - Right | 1 | 1 |
| 1 | A,B,C | 8881194310 | Footrest Support Assembly, Hemi, Color - Left | 1 | 1 |
| 1 | A,B | 1192525 | Footrest Support Assembly, Hemi, Black - Right | 1 | 1 |
| 1 | A,B | 1192526 | Footrest Support Assembly, Hemi, Black - Left | 1 | 1 |
| 2 | | 1020719 | Anti-Rattle, Black | 1 | 1 |
| 3 | | 1006490-NLA | NLA - Tip, Plastic, Black | 1 | 1 |
| 4 | | 1025716 | Screw, Phillips Pan Head (#10-32 x 11/16") | 1 | 1 |
| 5 | | 1026114 | Screw, Phillips Pan Head (#10-32 x 1/2") | 1 | 1 |
| 6 | | 1110178 | Handle, Release, Black - Right | 1 | 1 |
| 6 | | 1110178 | Handle, Release, Black - Right | 1 | 1 |
| 7 | | 1028846 | NLA - Rivnut (#10-32) | 1 | 1 |
| 8 | | 1025735 | Locknut (#10-32) | 1 | 1 |
| 10 | | 47565X057 | Bushing (7/32 x 3/8 x 11/32") | 1 | 1 |
| 11 | | 1048085 | Housing, Cam | 1 | 1 |
| 12 | | 1048086 | Lever, Cam, Black | 1 | 1 |
| NOTE: A - Includes Items 2 thru 13. Item #9 is not available. Order item #1 as a replacement. B - NOTE: Footrest Support Tube item #13 is not available, order item #1 as a replacement. C - Specify 71P Silver Vein Frame Finish when ordering. | | | | | |

Legrest Support Assembly

T94H Series Before 5/16/19

NOTE: If your chair was built with a serial # starting with "03H" or "03I", please contact an Invacare Parts Specialist for replacement parts at 1-800-333-6900 Ext. 3722.



Legrest Support Assembly

T94H Series Before 5/16/19

NOTE: If your chair was built with a serial # starting with "03H" or "03I", please contact an Invacare Parts Specialist for replacement parts at 1-800-333-6900 Ext. 3722.

| Item Number | Note | Part Number | Description | Quantity Per | |
|-------------|------|-------------|--|--------------|----------|
| | | | | Package | Assembly |
| 1 | F,A | 1110338 | Legrest Support Assembly, Hemi, Black - Right | 1 | 1 |
| 1 | F,A | 1110339 | Legrest Support Assembly, Hemi, Black - Left | 1 | 1 |
| 1 | A | 1110336 | Legrest Support Assembly, Hemi, Black - Right | 1 | 1 |
| 1 | A | 1110337 | Legrest Support Assembly, Hemi, Black - Left | 1 | 1 |
| 1 | D,A | 8881180761 | Legrest Support Assembly, Hemi, Color - Right | 1 | 1 |
| 1 | D,A | 8881180762 | Legrest Support Assembly, Hemi, Color - Left | 1 | 1 |
| 2 | | 04528X002 | Bracket, Release, Black | 1 | 1 |
| 2 | | 1110308 | Bracket, Release, Black | 1 | 1 |
| 3 | | 1013519 | Washer, Nylon (5/16 x 11/16 x 1/16") | 1 | 1 |
| 4 | | 1014807 | Screw, Hex Head (5/16-24 x 3-1/4") | 1 | 1 |
| 5 | | 10261X000 | Nut, Acorn (5/16-24) | 1 | 1 |
| 6 | | 1030948 | Screw, Slotted Truss Head (5/16-24 x 1-1/2") | 1 | 1 |
| 7 | | 1037125 | Cam, Legrest | 1 | 1 |
| 8 | | 1037126 | Handle, Release | 1 | 1 |
| 9 | | 1037485 | Spring, Release | 1 | 1 |
| 10 | | 1040060 | Tip, Plastic, Black | 1 | 1 |
| 11 | | 1040831 | Ring, Snap | 1 | 1 |
| 12 | | 1048085 | Housing, Cam | 1 | 1 |
| 13 | | 1048086 | Lever, Cam, Black | 1 | 1 |
| 14 | | 1091220 | Spacer, Legrest | 1 | 1 |
| 15 | | 1095433 | Plug Button, Black (7/8") | 1 | 1 |
| 16 | B | 1096773 | Nut, Push Dome (5/16") | 1 | 1 |
| 17 | E,B | 1110165-NLA | NLA - Tube, Elevating Support, Chrome - Right | 1 | 1 |
| 17 | E | 1110166-NLA | NLA - Tube, Elevating Support, Chrome - Left | 1 | 1 |
| 17 | B | 1110163 | Tube, Elevating Support, Black - Right | 1 | 1 |
| 17 | | 1110164 | NLA - Tube, Elevating Support, Black - Left | 1 | 1 |
| 18 | E | 1110208-NLA | NLA - Bracket, Calf Pad Mounting, Chrome | 1 | 1 |
| 18 | | 1110207 | Bracket, Calf Pad Mounting, Black | 1 | 1 |
| 19 | | 42326X001 | Bar, Ratchet | 1 | 1 |
| 20 | E,C | 1110334-NLA | NLA - Legrest Support Tube Assembly, Hemi, Black - Right | 1 | 1 |
| 20 | E,C | 1110335 | Legrest Support Tube Assembly, Hemi, Black - Left | 1 | 1 |
| 20 | B | 1110332 | NLA - Legrest Support Tube Assembly, Hemi, Black - Right | 1 | 1 |
| 20 | | 1110333 | Legrest Support Tube Assembly, Hemi, Black - Left | 1 | 1 |
| 21 | | 47328X003 | Bushing, Pivot (5/16 x 7/16 x 7/8") | 1 | 1 |
| 22 | | 47330X003 | Spacer (5/16 x 1/2 x 3/8") | 1 | 1 |
| 23 | | 48823X008 | Spring, Leaf | 1 | 1 |
| 24 | | 1107321 | Nut, Low Cap (5/16"-24) | 1 | 2 |
| 25 | | 04526X019 | Plate, Legrest Pad | 1 | 1 |
| 26 | | 1006490-NLA | NLA - Tip, Plastic, Black | 1 | 1 |
| 26 | | 1127688 | Package, Plastic Tip, Black | 10 | 1 |

Legrest Support Assembly

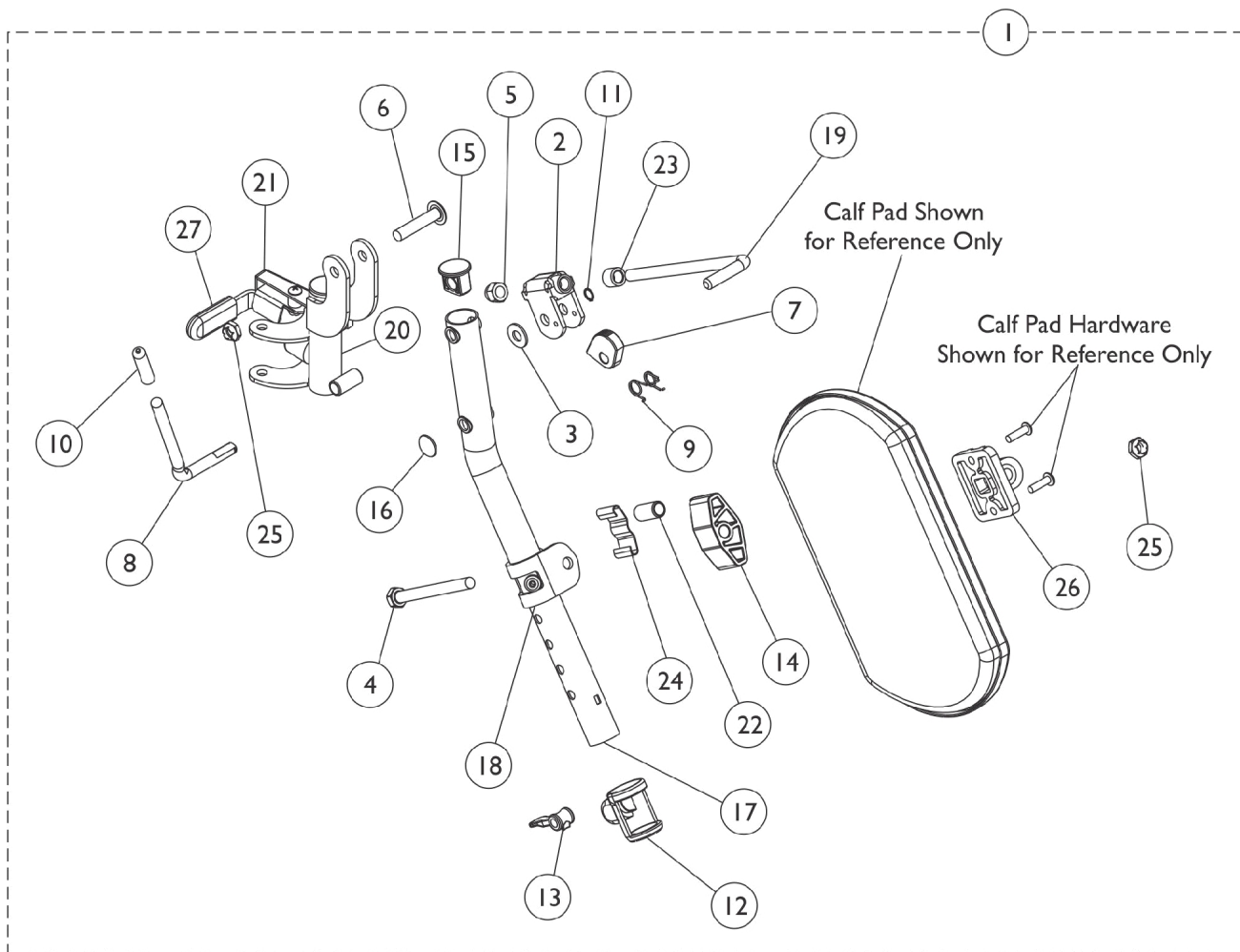
T94H Series Before 5/16/19

NOTE: If your chair was built with a serial # starting with "03H" or "03I", please contact an Invacare Parts Specialist for replacement parts at 1-800-333-6900 Ext. 3722.

| | |
|-------|--|
| NOTE: | A - Includes items 2-26. |
| | B - No longer available as a service part individually. Order item #1 as a replacement. |
| | C - Assembly includes: tip, bumper, screws, plug, spring, nuts, handle release, legrest support and bushing. |
| | D - Specify 71P Silver Vein frame finish when ordering. |
| | E - Item #17, 18 and 20 are not for sale on color frame models. See item #1 as a replacement. |
| | F - After 10/14/14 color changed from Chrome to Black. It is recommended to order both the right and left side to match. |

Legrest Support Assembly

T94H Series After 5/15/19



SSM_046A

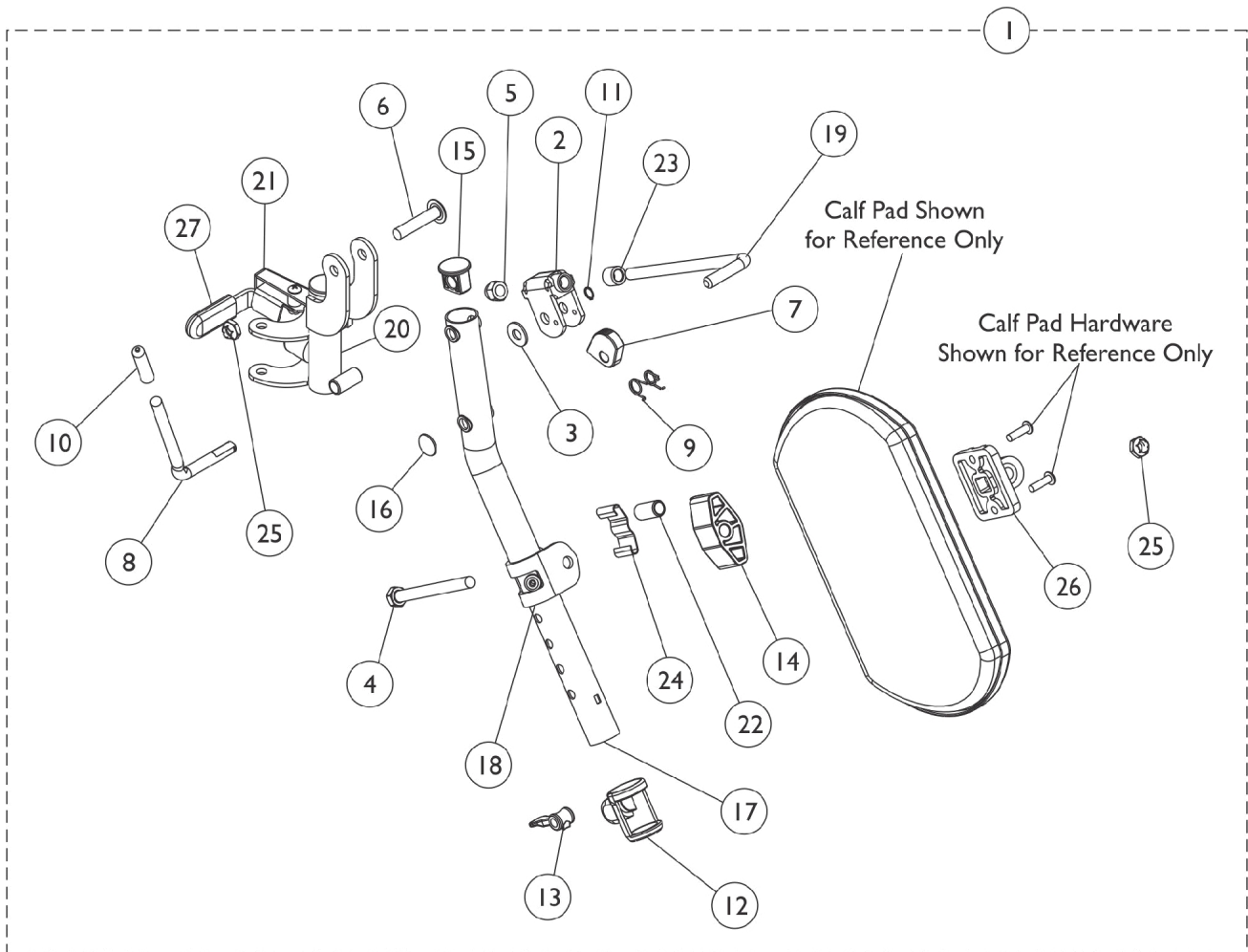
Legrest Support Assembly

T94H Series After 5/15/19

| Item Number | Note | Part Number | Description | Quantity Per | |
|---|------|-------------|---|--------------|----------|
| | | | | Package | Assembly |
| 1 | B,A | 1194381 | Legrest Support Assembly, Hemi, Black - Right | 1 | 1 |
| 1 | B,A | 1194382 | Legrest Support Assembly, Hemi, Black - Left | 1 | 1 |
| 3 | | 1013519 | Washer, Nylon (5/16 x 11/16 x 1/16") | 1 | 1 |
| 4 | | 1014807 | Screw, Hex Head (5/16-24 x 3-1/4") | 1 | 1 |
| 5 | | 10261X000 | Nut, Acorn (5/16-24) | 1 | 1 |
| 6 | | 1030948 | Screw, Slotted Truss Head (5/16-24 x 1-1/2") | 1 | 1 |
| 7 | | 1037125 | Cam, Legrest | 1 | 1 |
| 8 | | 1037126 | Handle, Release | 1 | 1 |
| 9 | | 1037485 | Spring, Release | 1 | 1 |
| 10 | | 1040060 | Tip, Plastic, Black | 1 | 1 |
| 11 | | 1040831 | Ring, Snap | 1 | 1 |
| 12 | | 1048085 | Housing, Cam | 1 | 1 |
| 13 | | 1048086 | Lever, Cam, Black | 1 | 1 |
| 14 | | 1091220 | Spacer, Legrest | 1 | 1 |
| 15 | | 1095433 | Plug Button, Black (7/8") | 1 | 1 |
| 16 | | 1096773 | Nut, Push Dome (5/16") | 1 | 1 |
| 19 | | 42326X001 | Bar, Ratchet | 1 | 1 |
| 21 | | 1180757 | Handle, Release, Black - Right | 1 | 1 |
| 21 | | 1180758 | Handle, Release, Black - Left | 1 | 1 |
| 22 | | 47328X003 | Bushing, Pivot (5/16 x 7/16 x 7/8") | 1 | 1 |
| 23 | | 47330X003 | Spacer (5/16 x 1/2 x 3/8") | 1 | 1 |
| 24 | | 48823X008 | Spring, Leaf | 1 | 1 |
| 25 | | 60264X001 | Locknut (5/16-24) | 1 | 2 |
| 26 | | 04526X019 | Plate, Legrest Pad | 1 | 1 |
| 27 | | 1006490-NLA | NLA - Tip, Plastic, Black | 1 | 1 |
| 27 | C | 1127688 | Package, Plastic Tip, Black | 10 | 1 |
| NOTE: A - Includes items 2-27. Items 2, 17, 18, 20 are not available for sale. Order item #1 for replacement. B - Item #20 includes: Item 27, bumper, screws, plug, springs, nuts, handle release, Legrest Support and bushing. C - Not Shown | | | | | |

Legrest Support Assembly

GT94H Series



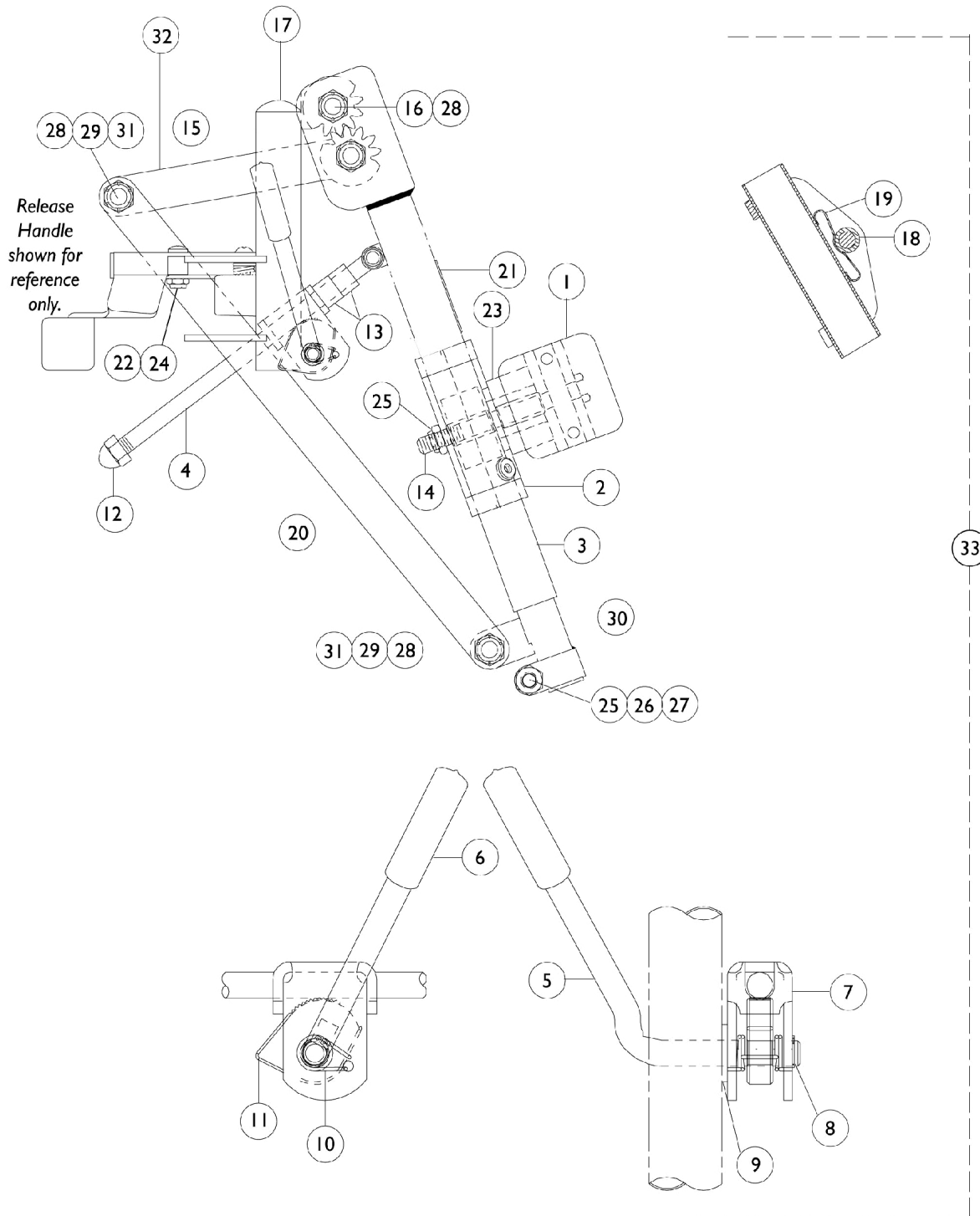
SSM_046A

Legrest Support Assembly GT94H Series

| Item Number | Note | Part Number | Description | Quantity Per | |
|--|------|-------------|---|--------------|----------|
| | | | | Package | Assembly |
| 1 | A,B | 1194381 | Legrest Support Assembly, Hemi, Black - Right | 1 | 1 |
| 1 | A,B | 1194382 | Legrest Support Assembly, Hemi, Black - Left | 1 | 1 |
| 3 | | 1013519 | Washer, Nylon (5/16 x 11/16 x 1/16") | 1 | 1 |
| 4 | | 1014807 | Screw, Hex Head (5/16-24 x 3-1/4") | 1 | 1 |
| 5 | | 10261X000 | Nut, Acorn (5/16-24) | 1 | 1 |
| 6 | | 1030948 | Screw, Slotted Truss Head (5/16-24 x 1-1/2") | 1 | 1 |
| 7 | | 1037125 | Cam, Legrest | 1 | 1 |
| 8 | | 1037126 | Handle, Release | 1 | 1 |
| 9 | | 1037485 | Spring, Release | 1 | 1 |
| 10 | | 1040060 | Tip, Plastic, Black | 1 | 1 |
| 11 | | 1040831 | Ring, Snap | 1 | 1 |
| 12 | | 1048085 | Housing, Cam | 1 | 1 |
| 13 | | 1048086 | Lever, Cam, Black | 1 | 1 |
| 14 | | 1091220 | Spacer, Legrest | 1 | 1 |
| 15 | | 1095433 | Plug Button, Black (7/8") | 1 | 1 |
| 16 | | 1096773 | Nut, Push Dome (5/16") | 1 | 1 |
| 19 | | 42326X001 | Bar, Ratchet | 1 | 1 |
| 22 | | 47328X003 | Bushing, Pivot (5/16 x 7/16 x 7/8") | 1 | 1 |
| 23 | | 47330X003 | Spacer (5/16 x 1/2 x 3/8") | 1 | 1 |
| 24 | | 48823X008 | Spring, Leaf | 1 | 1 |
| 25 | | 60264X001 | Locknut (5/16-24) | 1 | 2 |
| 26 | | 04526X019 | Plate, Legrest Pad | 1 | 1 |
| 27 | | 1006490-NLA | NLA - Tip, Plastic, Black | 1 | 1 |
| 27 | C | 1127688 | Package, Plastic Tip, Black | 10 | 1 |
| NOTE: A - Includes items 2-27. Items 2, 17, 18, 20 21 are not available for sale. Order item #1 for replacement. B - Item #20 includes: Item 27, bumper, screws, plug, springs, nuts, handle release, Legrest Support and bushing. C - Not Shown | | | | | |

Articulating Legrest Support AHL4A / AHL4C

NOTE: If your chair was built with a serial # starting with "03H" or "03I", please contact an Invacare Parts Specialist for replacement parts at 1-800-333-6900 Ext. 3722.



Articulating Legrest Support

AHL4A / AHL4C

NOTE: If your chair was built with a serial # starting with "03H" or "03I", please contact an Invacare Parts Specialist for replacement parts at 1-800-333-6900 Ext. 3722.

| Item Number | Note | Part Number | Description | Quantity Per | |
|-------------|------|-------------|--|--------------|----------|
| | | | | Package | Assembly |
| 1 | | 04526X019 | Plate, Legrest Pad | 1 | 1 |
| 2 | | 1025104 | Bracket, Legrest, Chrome | 1 | 1 |
| 3 | | 1022877-NLA | NLA - Tube, Support and Drive Link, Chrome - Right | 1 | 1 |
| 3 | | 1022878-NLA | NLA - Tube, Support and Drive Link, Chrome - Left | 1 | 1 |
| 4 | | 42326X004 | Bar, Ratchet - Right/Left | 1 | 1 |
| 5 | | 1037126 | Handle, Release | 1 | 1 |
| 6 | | 1040060 | Tip, Plastic, Black | 1 | 1 |
| 7 | | 04528X002 | Bracket, Release, Black | 1 | 1 |
| 8 | | 1040831 | Ring, Snap | 1 | 1 |
| 9 | | 7930310-NLA | NLA - Washer, Nylon (5/16 x 11/16 x 1/16") | 25 | 1 |
| 10 | | 1037485 | Spring, Release | 1 | 2 |
| 11 | | 1037125 | Cam, Legrest | 1 | 1 |
| 12 | | 7930336-NLA | NLA - Nut, Acorn (5/16-24) | 25 | 1 |
| 13 | | 47330X003 | Spacer (5/16 x 1/2 x 3/8") | 1 | 1 |
| 14 | | 1014807 | Screw, Hex Head (5/16-24 x 3-1/4") | 1 | 1 |
| 15 | | 1023092-NLA | NLA - Legrest Support Tube Assembly, Hemi, Chrome - Right | 1 | 1 |
| 15 | | 1023093-NLA | NLA - Legrest Support Tube Assembly, Hemi, Chrome - Left | 1 | 1 |
| 16 | | 1022854-NLA | NLA - Screw, Shoulder Slotted Head (1/2 x 1-1/8", 3/8-16) | 1 | 1 |
| 17 | | 1027097 | Plug Button, Black (3/4") | 1 | 1 |
| 18 | | 47328X003 | Bushing, Pivot (5/16 x 7/16 x 7/8") | 1 | 1 |
| 19 | | 48823X008 | Spring, Leaf | 1 | 1 |
| 20 | | 1022846-NLA | NLA - Bar, Link, Black | 1 | 1 |
| 21 | | 1024911-NLA | NLA - Decal, Smartleg | 1 | 1 |
| 22 | | 1030979 | Screw, Phillips Pan Head Tap (#10-32 x 3/4") | 1 | 1 |
| 23 | | 1091220 | Spacer, Legrest | 1 | 1 |
| 24 | | 1022874 | Bumper | 1 | 1 |
| 25 | | 7930363-NLA | NLA - Package, Locknut (5/16"-24) | 25 | 2 |
| 26 | | 11232X009 | Bolt, Lug (5/16-24 x 1-3/8") | 1 | 1 |
| 27 | | 1027377 | Washer (#20) | 1 | 1 |
| 28 | | 40363X000 | Hex Nut (3/8"-16) | 1 | 3 |
| 29 | | 1022866-NLA | NLA - Screw, Socket Button Head (3/8-16 x 3/4") | 1 | 2 |
| 30 | | 1022848 | Tube, Slide, Articulating, Chrome - Right | 1 | 1 |
| 30 | | 1022849 | Tube, Slide, Articulating, Chrome - Left | 1 | 1 |
| 31 | | 1049527 | Washer, Nylon (3/8 x 3/4 x 1/16") | 1 | 2 |
| 32 | | 1022864 | Drive, Link, Black | 1 | 1 |
| 33 | A | 1041799 | Legrest Support Assembly, Articulating, Hemi, Chrome - Right | 1 | 1 |
| 33 | A | 1041800 | Legrest Support Assembly, Articulating, Hemi, Chrome - Left | 1 | 1 |

Articulating Legrest Support

AHL4A / AHL4C

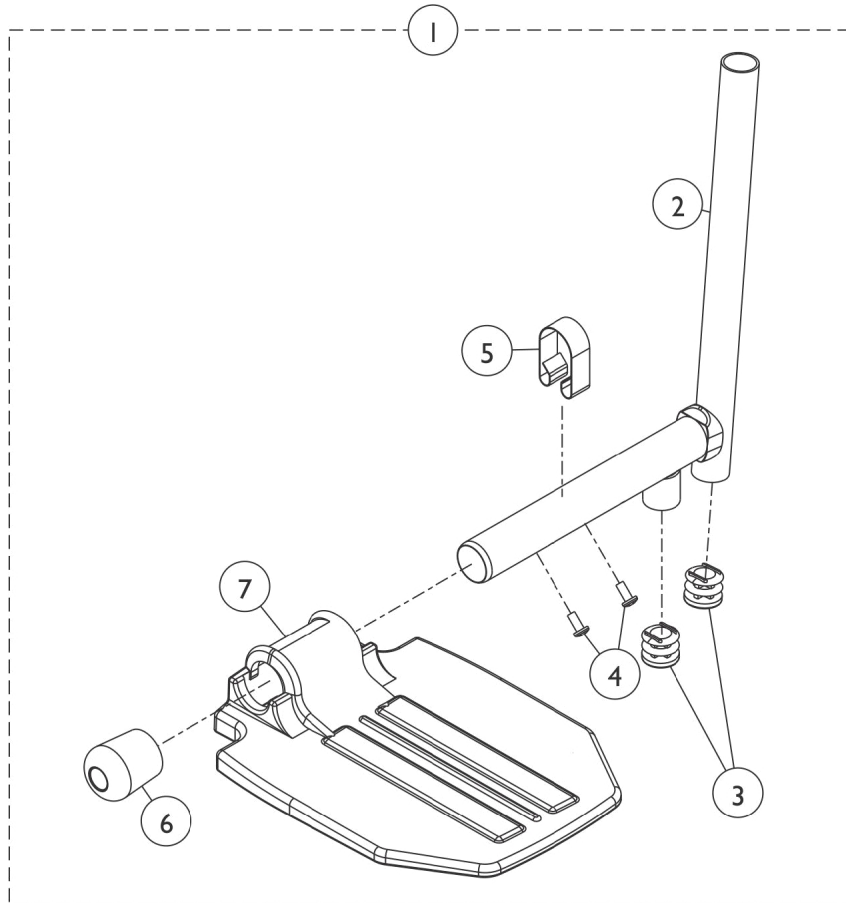
NOTE: If your chair was built with a serial # starting with "03H" or "03I", please contact an Invacare Parts Specialist for replacement parts at 1-800-333-6900 Ext. 3722.

| Item Number | Note | Part Number | Description | Quantity Per | |
|--|------|-------------|--|--------------|----------|
| | | | | Package | Assembly |
| | B,C | 1046329 | Kit, Elevating Legrest Ratchet Hardware (Pair) | 2 | 1 |
| NOTE: A - Includes Items 1-32. B - Includes Items 4-13. C - Not Shown. | | | | | |

Pivot Slide Tube with Footplate

AHL4A/C Legrests

NOTE: If your chair was built with a serial # starting with "03H" or "03I", please contact an Invacare Parts Specialist for replacement parts at 1-800-333-6900 Ext. 3722.



Pivot Slide Tube with Footplate AHL4A/C Legrests

NOTE: If your chair was built with a serial # starting with "03H" or "03I", please contact an Invacare Parts Specialist for replacement parts at 1-800-333-6900 Ext. 3722.

| Item Number | Note | Part Number | Description | Quantity Per | |
|-------------|------|-------------|---|--------------|----------|
| | | | | Package | Assembly |
| 1 | | See Chart | Pivot/Slide Tube Assembly with Footplate - AHL4A/C Legrests | 1 | 1 |
| 2 | | 7500085-NLA | NLA - Pivot/Slide Tube w/ Plug Button Assembly, Chrome | 1 | 1 |
| 2 | | 1041526 | Pivot/Slide Tube w/ Plug Button Assembly, Chrome | 1 | 2 |
| 3 | | 1027097 | Plug Button, Black (3/4") | 1 | 2 |
| 3 | | 1018133 | Plug Button, Black (5/8") | 1 | 1 |
| 4 | | 40120X001 | Screw, Phillips Pan Head (#8-32 x 3/8") | 1 | 1 |
| 5 | | 1006981 | Spring, Tension | 1 | 1 |
| 6 | | 1016346 | Cap, End, Tube, Black (7/8") | 1 | 1 |
| 7 | | 1015178 | Footplate, Composite, Black (6" W x 7-53/64" L) | 1 | 1 |
| 7 | A | 44200X059 | Footplate, Aluminum, Small, Black (6-3/4" W x 6" L) | 1 | 1 |
| 7 | A | 44200X027 | Footplate, Aluminum, Medium, Black (7-3/4" W x 6" L) | 1 | 1 |
| 7 | A | 44200X025 | Footplate, Aluminum, Extra Large, Black - Right (8" W x 8-1/2" L) | 1 | 1 |
| 7 | A | 44200X026 | Footplate, Aluminum, Extra Large, Black - Left (8" W x 8-1/2" L) | 1 | 1 |

NOTE: A - Aluminum footplates on chairs built before 2/96 had a "Ball Burnish" finish. Footplates after 1/96 now have a black finish. When replacing one ball burnish footplate it is suggested that you order two new (black) footplates.

Pivot/Slide Tube Assembly with Footplate - AHL4A/C Legrests

| Front Rigging Model | Chair Width | Footplate Type | Side | Part Number |
|---------------------|-------------|---------------------------------------|------------|-------------|
| AHL4A Chrome | 18 - 24" W | Aluminum | Right | 1023907 |
| AHL4A Chrome | 18 - 24" W | Aluminum | Left | 1023908 |
| AHL4C Chrome | 18 - 24" W | Composite See Note(s) A | Right/Left | 1023909-NLA |
| AHL4C Chrome | 18 - 24" W | Composite See Note(s) A | Right/Left | 1023910-NLA |
| AHL4A | 18 - 24" W | Extra Large Aluminum See Note(s) B | Right | 1035456 |
| AHL4A | 18 - 24" W | Extra Large Aluminum See Note(s) B | Left | 1035457 |

Pivot Slide Tube with Footplate AHL4A/C Legrests

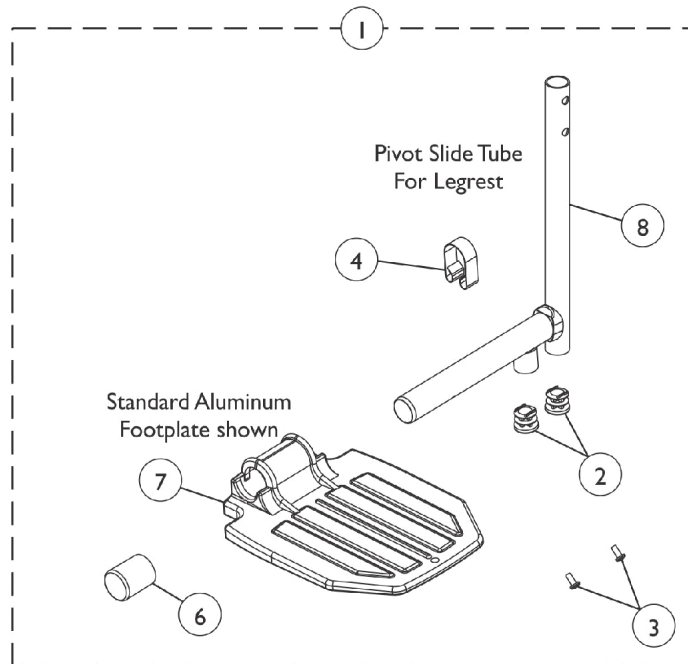
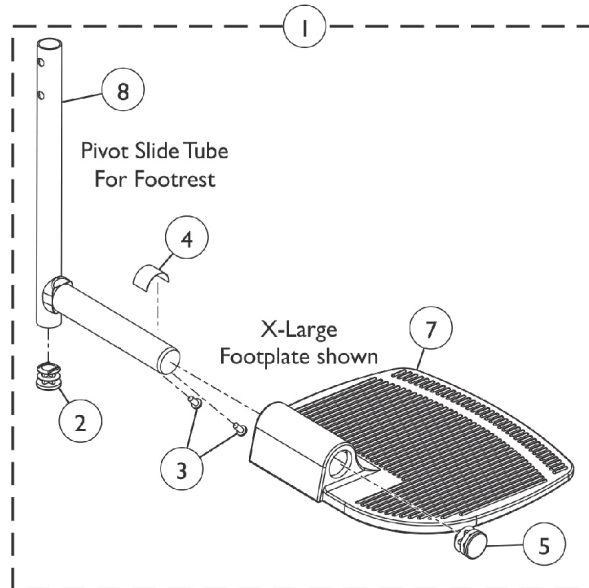
NOTE: If your chair was built with a serial # starting with "03H" or "03I", please contact an Invacare Parts Specialist for replacement parts at 1-800-333-6900 Ext. 3722.

| | |
|-------|---|
| NOTE: | A - Use the same parts number when ordering Front Rigging for either side. B - Order replacements depending on asked for sizing. |
|-------|---|

Pivot Slide Tube with Footplate

T93H Series and T94H Series

NOTE: If your chair was built with a serial # starting with "03H" or "03I", please contact an Invacare Parts Specialist for replacement parts at 1-800-333-6900 Ext. 3722.



Pivot Slide Tube with Footplate

T93H Series and T94H Series

NOTE: If your chair was built with a serial # starting with "03H" or "03I", please contact an Invacare Parts Specialist for replacement parts at 1-800-333-6900 Ext. 3722.

| Item Number | Note | Part Number | Description | Quantity Per | |
|-------------|------|-------------|---|--------------|----------|
| | | | | Package | Assembly |
| 1 | | See Chart | Item #1 Pivot/Slide Tube with Footplate Assembly | 1 | 1 |
| 2 | | 1027097 | Plug Button, Black (3/4") | 1 | 2 |
| 3 | | 40120X001 | Screw, Phillips Pan Head (#8-32 x 3/8") | 1 | 2 |
| 4 | F | 1006981 | Spring, Tension | 1 | 1 |
| 4 | D,E | 1036123 | Spring, Leaf | 1 | 1 |
| 5 | | 1027095 | Plug Button, Black (7/8") | 1 | 1 |
| 6 | | 1016346 | Cap, End, Tube, Black (7/8") | 1 | 1 |
| 7 | | 44200X027 | Footplate, Aluminum, Medium, Black (7-3/4" W x 6" L) | 1 | 1 |
| 7 | | 44200X025 | Footplate, Aluminum, Extra Large, Black - Right (8" W x 8-1/2" L) | 1 | 1 |
| 7 | | 44200X026 | Footplate, Aluminum, Extra Large, Black - Left (8" W x 8-1/2" L) | 1 | 1 |
| 7 | | 1015178 | Footplate, Composite, Black (6" W x 7-53/64" L) | 1 | 1 |
| 8 | | 1110300-NLA | NLA - Pivot/Slide Tube w/ Plug Button, Legrest, Chrome | 1 | 1 |
| 8 | | 1110301 | Pivot/Slide Tube w/ Plug Button, Legrest, Black | 1 | 1 |
| 8 | | 1111278-NLA | NLA - Pivot/Slide Tube w/ Plug Button, Footrest, Chrome | 1 | 1 |
| 8 | | 1111277 | Pivot/Slide Tube w/ Plug Button, Footrest, Black | 1 | 1 |

NOTE: D - Use one or more leaf springs per assembly as required such that footplate may be moved by hand to the up-right position and remain in place.
E - Use with Extra Large Footplates.
F - Use with Standard Footplates.

Item #1 Pivot/Slide Tube with Footplate Assembly

| Front Rigging Model | Chair Width | Footplate Style | Frame Side | Part Number |
|-----------------------|-------------|----------------------|------------|--------------------------|
| T93HA-T93HAB Black | 18 - 24" W | Aluminum | Right | 1111285 See Note(s) A |
| T93HA-T93HAB Black | 18 - 24" W | Aluminum | Left | 1111286 See Note(s) A |
| T93HA-T93HAB Black | 18 - 24" W | Extra Large Aluminum | Right | 1110344 |
| T93HA-T93HAB Black | 18 - 24" W | Extra Large Aluminum | Left | 1110345 |
| T93HC-T93HAC Black | 18 - 24" W | Composite | Right | 1194329 |
| T93HC-T93HAC Black | 18 - 24" W | Composite | Left | 1194330 |
| T94HA-T94HAB Black | 18 - 24" W | Aluminum | Right | 1110315 |

Pivot Slide Tube with Footplate

T93H Series and T94H Series

NOTE: If your chair was built with a serial # starting with "03H" or "03I", please contact an Invacare Parts Specialist for replacement parts at 1-800-333-6900 Ext. 3722.

Item #1 Pivot/Slide Tube with Footplate Assembly

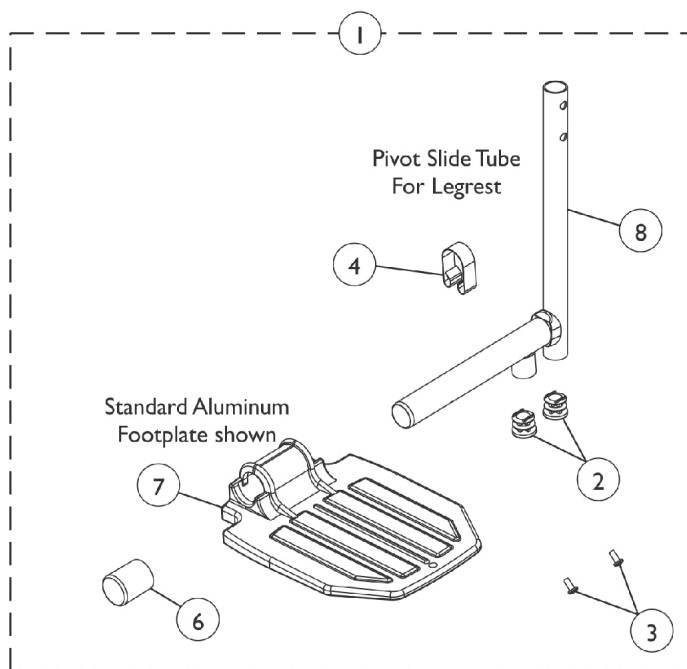
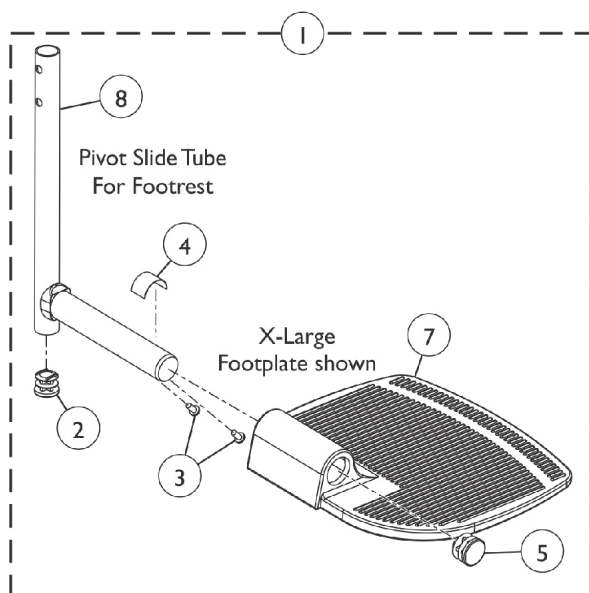
| Front Rigging Model | Chair Width | Footplate Style | Frame Side | Part Number |
|-----------------------|-------------|----------------------|------------|-------------|
| T94HA-T94HAB Black | 18 - 24" W | Aluminum | Left | 1110316 |
| T94HA-T94HAB Black | 18 - 24" W | Extra Large Aluminum | Right | 1110348 |
| T94HA-T94HAB Black | 18 - 24" W | Extra Large Aluminum | Left | 1110349 |
| T94HC-T94HCB Black | 18 - 24" W | Composite | Right | 1110311 |
| T94HC-T94HCB Black | 18 - 24" W | Composite | Left | 1110312 |

NOTE: A - NOTE: Part numbers changed from Chrome Pivot/Slide Tube to Black as of 5/16/19

Pivot Slide Tube (Black) with Footplate

GT93H/T93H Series and GT94H/T94H Series

NOTE: If your chair was built with a serial # starting with "03H" or "03I", please contact an Invacare Parts Specialist for replacement parts at 1-800-333-6900 Ext. 3722.



Pivot Slide Tube (Black) with Footplate

GT93H/T93H Series and GT94H/T94H Series

NOTE: If your chair was built with a serial # starting with "03H" or "03I", please contact an Invacare Parts Specialist for replacement parts at 1-800-333-6900 Ext. 3722.

| Item Number | Note | Part Number | Description | Quantity Per | |
|-------------|------|-------------|---|--------------|----------|
| | | | | Package | Assembly |
| 1 | | See Chart | Item #1 Pivot/Slide Tube (Black) w/ Footplate Assembly | 1 | 1 |
| 2 | | 1027097 | Plug Button, Black (3/4") | 1 | 2 |
| 3 | | 40120X001 | Screw, Phillips Pan Head (#8-32 x 3/8") | 1 | 2 |
| 4 | F | 1006981 | Spring, Tension | 1 | 1 |
| 4 | D,E | 1036123 | Spring, Leaf | 1 | 1 |
| 5 | | 1027095 | Plug Button, Black (7/8") | 1 | 1 |
| 6 | | 1016346 | Cap, End, Tube, Black (7/8") | 1 | 1 |
| 7 | | 44200X027 | Footplate, Aluminum, Medium, Black (7-3/4" W x 6" L) | 1 | 1 |
| 7 | | 44200X025 | Footplate, Aluminum, Extra Large, Black - Right (8" W x 8-1/2" L) | 1 | 1 |
| 7 | | 1015178 | Footplate, Composite, Black (6" W x 7-53/64" L) | 1 | 1 |
| 7 | G | 1192674 | Footplate, Composite, Black (6" W x 7-53/64" L) | 1 | 1 |
| 8 | | 1110301 | Pivot/Slide Tube w/ Plug Button, Legrest, Black | 1 | 1 |
| 8 | | 1111277 | Pivot/Slide Tube w/ Plug Button, Footrest, Black | 1 | 1 |

NOTE: D - Use one or more leaf springs per assembly as required such that footplate may be moved by hand to the up-right position and remain in place.
E - Use with Extra Large Footplates.
F - Use with Standard Footplates.
G - Use with GT93HC and GT94HC/GT94HCB model Front Riggings and (T93HC, T94HC/T94HCB as of 5/16/19).

Item #1 Pivot/Slide Tube (Black) w/ Footplate Assembly

| Front Rigging Model | Chair Width | Footplate Style | Frame Side | Part Number |
|---------------------|-------------|----------------------|------------|-----------------------------|
| T93HA | 18 - 24" W | Aluminum | Right | 8881180777 See Note(s) A |
| T93HA | 18 - 24" W | Aluminum | Left | 8881180778 See Note(s) A |
| GT93HA/T93HAB | 18 - 24" W | Aluminum | Right | 1111285 |
| GT93HA/T93HAB | 18 - 24" W | Aluminum | Left | 1111286 |
| T93HA | 18 - 24" W | Extra Large Aluminum | Right | 8881180783 See Note(s) A |
| T93HA | 18 - 24" W | Extra Large Aluminum | Left | 8881180784 See Note(s) A |
| GT93HA/T93HAB | 18 - 24" W | Extra Large Aluminum | Right | 1110344 |
| GT93HA/T93HAB | 18 - 24" W | Extra Large Aluminum | Left | 1110345 |
| T93HC | 18 - 24" W | Composite | Right | 8881180779 See Note(s) A |

Pivot Slide Tube (Black) with Footplate

GT93H/T93H Series and GT94H/T94H Series

NOTE: If your chair was built with a serial # starting with "03H" or "03I", please contact an Invacare Parts Specialist for replacement parts at 1-800-333-6900 Ext. 3722.

Item #1 Pivot/Slide Tube (Black) w/ Footplate Assembly

| Front Rigging Model | Chair Width | Footplate Style | Frame Side | Part Number |
|--|-------------|----------------------|------------|-----------------------------|
| T93HC | 18 - 24" W | Composite | Left | 8881180780 See Note(s) A |
| GT93HC/T93HC | 18 - 24" W | Composite | Right | 1194329 See Note(s) B |
| GT93HC/T93HC | 18 - 24" W | Composite | Left | 1194330 See Note(s) B |
| T94HA | 18 - 24" W | Aluminum | Right | 8881180764 See Note(s) A |
| T94HA | 18 - 24" W | Aluminum | Left | 8881180765 See Note(s) A |
| GT94HA/T94HAB | 18 - 24" W | Aluminum | Right | 1110315 |
| GT94HA/T94HAB | 18 - 24" W | Aluminum | Left | 1110316 |
| T94HA | 18 - 24" W | Extra Large Aluminum | Right | 8881180770 See Note(s) A |
| T94HA | 18 - 24" W | Extra Large Aluminum | Left | 8881180771 See Note(s) A |
| GT94HA/T94HAB | 18 - 24" W | Extra Large Aluminum | Right | 1110348 |
| GT94HA/T94HAB | 18 - 24" W | Extra Large Aluminum | Left | 1110349 |
| T94HC | 18 - 24" W | Composite | Right | 8881180766 See Note(s) A |
| T94HC | 18 - 24" W | Composite | Left | 8881180767 See Note(s) A |
| GT94HC/T94HCB | 18 - 24" W | Composite | Right | 1110311 |
| GT94HC/T94HCB | 18 - 24" W | Composite | Left | 1110312 |
| NOTE: A - Specify color 34P Black when ordering. B - Used for model GT93HC and (T93HC as of 5/16/19). | | | | |

Seat Accessories

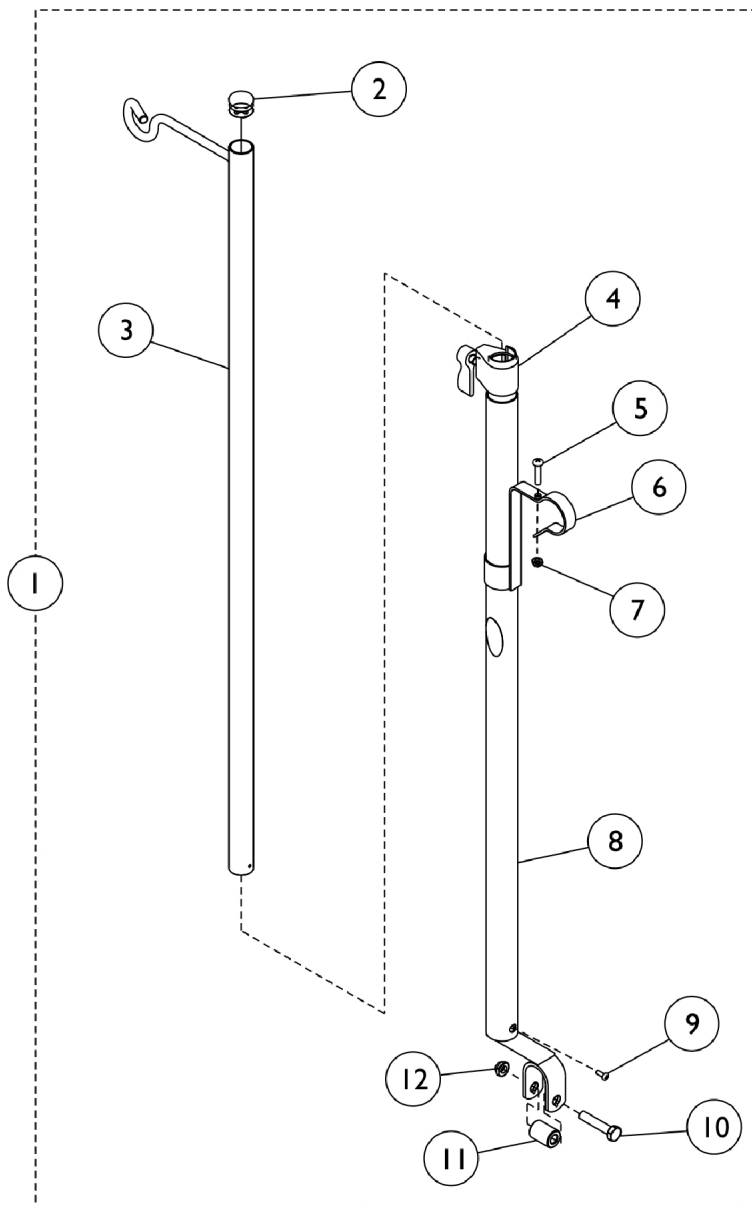
NOTE: If your chair was built with a serial # starting with "03H" or "03I", please contact an Invacare Parts Specialist for replacement parts at 1-800-333-6900 Ext. 3722.

Solid Seat Insert

| Part Number | Chair Width X Depth |
|------------------------------------|---------------------|
| 8881034668 See Note(s) A | 18" W x 18" D |
| 8881034686-NLA See Note(s) A | 18" W x 20" D |
| 8881102882 See Note(s) A | 20" W x 18" D |
| 8881102172 See Note(s) A | 20" W x 20" D |
| 8881102883 See Note(s) A | 22" W x 18" D |
| 8881102173 See Note(s) A | 22" W x 20" D |
| 8881102168 See Note(s) A | 24" W x 18" D |
| 8881102174 See Note(s) A | 24" W x 20" D |
| NOTE: A - Available in black only. | |

I.V. Rod and Bracket (2218)

NOTE: If your chair was built with a serial # starting with "03H" or "03I", please contact an Invacare Parts Specialist for replacement parts at 1-800-333-6900 Ext. 3722.



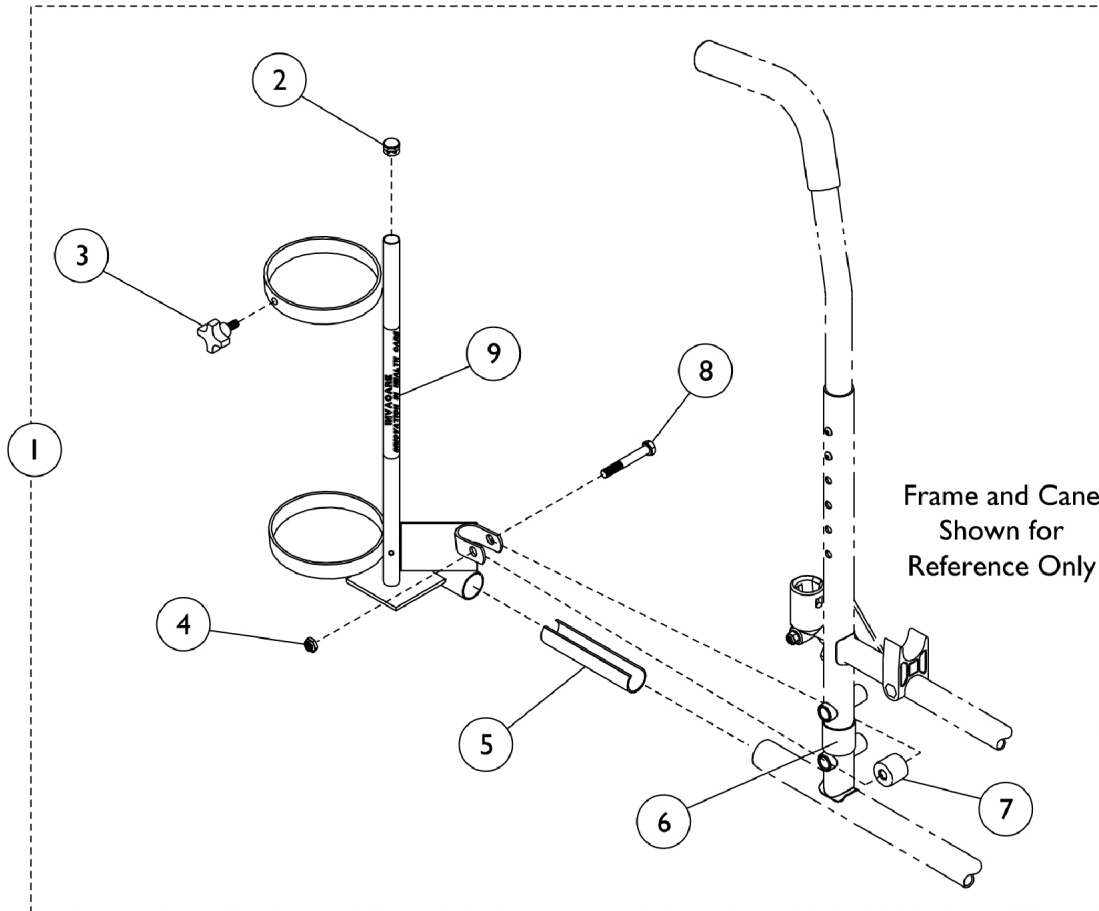
I.V. Rod and Bracket (2218)

NOTE: If your chair was built with a serial # starting with "03H" or "03I", please contact an Invacare Parts Specialist for replacement parts at 1-800-333-6900 Ext. 3722.

| Item Number | Note | Part Number | Description | Quantity Per | |
|----------------------|------|---------------|--|--------------|----------|
| | | | | Package | Assembly |
| 1 | | 1101760-NLA | NLA - Rod, I.V., Telescoping (Model 2218) | 1 | 1 |
| 2 | | 1027095 | Plug Button, Black (7/8") | 1 | 1 |
| 3 | | 04701X028 | Rod, I.V. | 1 | 1 |
| 4 | | 12592X000-NLA | NLA - Adjustment Lock Assembly, Chrome | 1 | 1 |
| 5 | | 16718X000-NLA | NLA - Screw, Phillips Pan Head (#10-32 x 7/8") | 1 | 1 |
| 6 | | 1020082 | Bracket, Mounting, Chrome | 1 | 1 |
| 7 | | 60279X003 | Locknut (#10-32) | 1 | 1 |
| 8 | | 1017623 | Socket, I.V. | 1 | 1 |
| 9 | | 21243X000-NLA | NLA - Screw, Phillips Pan Head (#6-20 x 3/8") | 1 | 1 |
| 10 | | 11239X001 | Screw, Hex Head (5/16-24 x 1-1/2") | 1 | 1 |
| 11 | | 1017843-NLA | NLA - Spacer, Chrome (5/16 x 11/16 x 15/16") | 1 | 1 |
| 12 | | 60264X001 | Locknut (5/16-24) | 1 | 1 |
| | A | 1023618 | Insert, Guide Tube, Black (1" Long) | 1 | 1 |
| | A | 1114827 | Instruction Sheet | 1 | 1 |
| NOTE: A - Not Shown. | | | | | |

Oxygen Holder - 1497

NOTE: If your chair was built with a serial # starting with "03H" or "03I", please contact an Invacare Parts Specialist for replacement parts at 1-800-333-6900 Ext. 3722.



Oxygen Holder - 1497

NOTE: If your chair was built with a serial # starting with "03H" or "03I", please contact an Invacare Parts Specialist for replacement parts at 1-800-333-6900 Ext. 3722.

| Item Number | Note | Part Number | Description | Quantity Per | |
|-------------|------|---------------|--|--------------|----------|
| | | | | Package | Assembly |
| 1 | A | 1070901 | Holder, Oxygen | 1 | 1 |
| 2 | | 1017672 | Plug Button, Grey (1/2") | 1 | 1 |
| 3 | | 1027683 | Knob, Adjustment, Black | 1 | 1 |
| 3 | | 1027684 | Knob, Clamping, Black | 1 | 1 |
| 4 | | 7930363-NLA | NLA - Package, Locknut (5/16"-24) | 25 | 1 |
| 5 | | 1023560 | Insert, Guide Tube, Black (3-3/4" Long) | 1 | 1 |
| 6 | | 1023618 | Insert, Guide Tube, Black (1" Long) | 1 | 1 |
| 7 | | 1102577 | Spacer, Black (5/16 x 11/16 x 15/16") | 1 | 1 |
| 8 | | 11239X000-NLA | NLA - Screw, Hex Head (5/16-24 x 1-3/4") | 1 | 1 |
| 9 | B | 1070900-NLA | NLA - Base, Oxygen Holder | 1 | 1 |
| | | 1095497 | Decal, Invacare Logo (1.6) | 1 | 1 |
| | | 1027930 | Instruction Sheet, Oxygen Holder | 1 | 1 |

NOTE: A - Includes Items 2-9.
B - Not Shown

Miscellaneous Accessories

NOTE: If your chair was built with a serial # starting with "03H" or "03I", please contact an Invacare Parts Specialist for replacement parts at 1-800-333-6900 Ext. 3722.

Carrying Pocket

| 18" Wide Chair | 20" Wide Chair | 22" Wide Chair | 24" Wide Chair |
|---|----------------|----------------|----------------|
| 1041603-NLA | 8881047957 | 8881047960 | 8881121291 |
| See Note(s) A, B | See Note(s) A | See Note(s) A | See Note(s) A |
| NOTE: A - Specify upholstery color when ordering. See category titled, "Upholstery Colors." B - This Carry pocket comes in U92 only. | | | |

Carrying Straps

| Part Number | Description | Quantity |
|----------------|----------------|----------|
| 8881091731-NLA | Carrying Strap | 1 |

Crutch & Cane Carrier

| Part Number | Description | Quantity |
|-------------|-----------------------|----------|
| 1034204 | Crutch & Cane Carrier | 1 |

Non-Folding Device

| Part Number | Description | Quantity |
|-------------|--------------------------------|----------|
| 1143048 | Device, Non-Folding (14-24" W) | 1 |

Miscellaneous Accessories

NOTE: If your chair was built with a serial # starting with "03H" or "03I", please contact an Invacare Parts Specialist for replacement parts at 1-800-333-6900 Ext. 3722.

OverHead and Single Pole Anti-Theft Device

| Part Number | Description | Quantity |
|-------------|---|----------|
| 1037080 | OverHead Anti-Theft Device Available on 16-18" Wide Chairs | 1 |
| 1121288 | Single Pole Anti-Theft Device | 1 |

Seat/Chest Positioning Strap

| Buckle Style | 18" Wide Chair | 20-22" Wide Chair | 24" Wide Chair |
|---------------|----------------|-------------------|------------------------------|
| Auto | 1004310 | 1034625 | 1034622-NLA See Note(s) A |
| Hook and Loop | 1034744 | 1034745 | 1034746 |

NOTE: A - For replacement contact The Aftermarket Group (TAG).

Anti-Tipper

| Part Description | Part Number |
|--|-------------|
| Rear Anti-Tipper, Adjustable for 8" Casters (Pair) | 1058836 |
| Anti-Rattle (1") | 15680X013 |
| Front Anti-Tipper (1326) (Pair) | 1042412 |

Invacare Corporation

www.invacare.com



Yes, you can.

One Invacare Way
Elyria, Oh USA
44036-2125
800-333-6900

Technical Support
800-832-4707
Florida Technical Support
407-321-5630

Customer Service
800-333-6900

© 2022 Invacare Corporation. All rights reserved. Republication, duplication or modification in whole or in part is prohibited without prior written permission from Invacare. Trademarks are identified by ™ and ®. All trademarks are owned by or licensed to Invacare Corporation or its subsidiaries unless otherwise noted.
(Revised 03/22/22)

Form No. 03-030