

INVACARE® TOP END®

Color Collection



Color is the most individual choice on a wheelchair today. Top End's array of fresh colors allows consumers to customize their wheelchairs to a color suiting their individual personalities.

From Grasshopper Green to Electric Red, Top End offers a color for everyone. Whether you're making a fashion statement matching your favorite sports team or simply coordinating with your clothing through a neutral frame choice, there are plenty of options. Which color matches your personality?

Go ahead...express yourself!

Due to the effects of heat, light and application process, slight color variations may occur on certain finishes. Specifications and color selection availability are subject to change without notification.

*Select colors not available on all models.

*Due to the paint application process on some Top End models, these colors may be replaced with a closely matched substitute.

Upholstery Color

Top End has added the camouflage fabric pattern as an option for those who dare to be different. Choose now from camouflage or black.

INVACARE® TOP END®

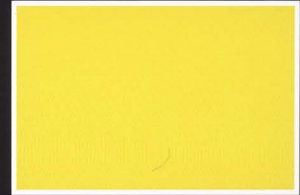
Color Collection



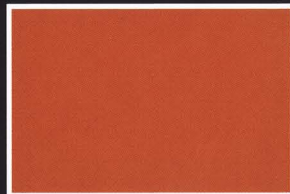
Electric Blue*



Grasshopper Green



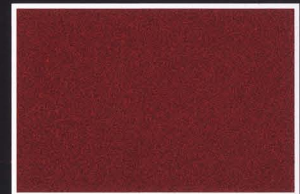
Safety Yellow



Sunkissed Orange



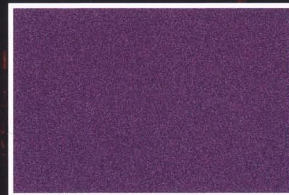
Tangerine Red



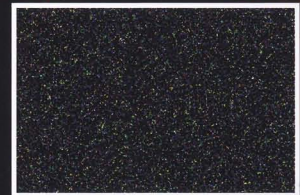
Electric Red*



Bubblegum Pink



Grape Madness



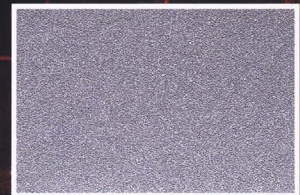
Black Prism



Wet Black

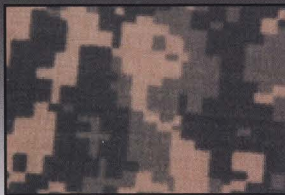


Midnight Blue



Silver Metallic

Digital Camouflage not available on Invacare® TopEnd® Crossfire™ T6, T6A and Titanium models



Digital Camouflage



Camouflage



White

Top End Sports and Recreation Products
4501 63rd Circle North
Pinellas Park, Florida 33781
(727)-522-8677
(800) 532-8677

Invacare Corporation
www.invacare.com

USA
One Invacare Way
Elyria, Ohio
44035-4190
(800) 333-6900

Canada
570 Matheson Blvd. E.
Unit 8
Mississauga, Ontario
L4Z 4G4 Canada
(800) 668-5324

© 2011 Invacare Corporation.

All rights reserved. Trademarks are identified by the symbols™ and®. All trademarks are owned by or licensed to Invacare Corporation unless otherwise noted.

Specifications are subject to change without notification.

Form No. 07-054 Rev. 12/10 100411



Yes, you can.®