

# 9000 XDT TALL FORK/STEM CONVERSION KIT



## Assembly, Installation and Operating Instructions

Kit Nos. 1070843 and 1075042

Yes, you can!

*NOTE: This instruction sheet pertains to the following Kits: 1070843 (chrome), for wheelchairs built before 10/97, and Kit No. 1075042 (chrome), for wheelchairs built after 10/97.*

*NOTE: Check all parts for shipping damage. If damage is found, DO NOT use. Contact Carrier/Invacare for further instructions.*

### SAFETY SUMMARY

The following recommendations are made for the safe and proper installation and use of the 9000 XDT Tall Fork/Stem Conversion Kit:

#### GENERAL WARNING

DO NOT assemble or use this equipment without first reading and understanding this instruction sheet. If you are unable to understand the Warnings, Cautions or Instructions, contact a healthcare professional, dealer or technical personnel if applicable before attempting to install this equipment - otherwise, injury or damage may occur.

#### INSTALLATION WARNING

After ANY adjustments, repair or service and BEFORE use, make sure that all attaching hardware is tightened securely.

#### All Kits Include the Following:

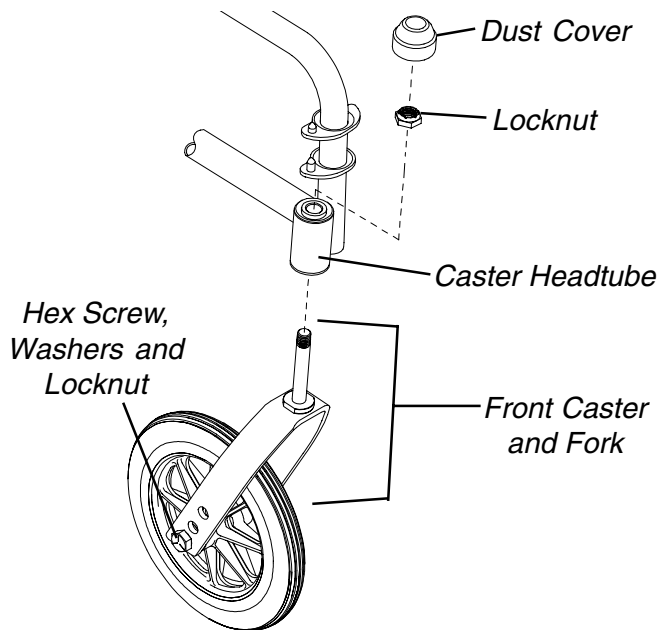
Description	Quantity
Flanged Bearing	2
Dust Cover	2
Locknut	2
Fork Assembly	2
Bottom Sleeve With Bearing	2

### DISASSEMBLING THE EXISTING FORK/STEM ASSEMBLY (FIGURE 1)

1. Remove and discard the dust cover.
2. Remove and discard the locknut that secures the fork to the caster headtube.
3. Drop the front caster and fork out of the caster headtube.
4. Remove the hex screw, washers and locknut that secures the front caster to the fork. Discard the fork.

*NOTE: Front casters will be assembled to NEW fork.*

5. Disassemble the existing caster headtube assembly. Refer to **DISASSEMBLING THE EXISTING CASTER HEADTUBE ASSEMBLY** in this instruction sheet.



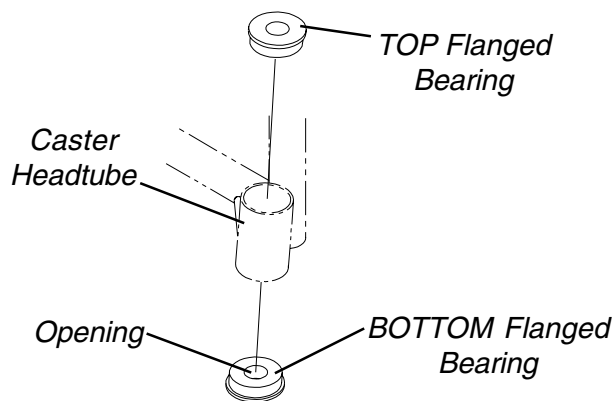
**FIGURE 1 - DISASSEMBLING THE EXISTING FORK/STEM ASSEMBLY**

### DISASSEMBLING THE EXISTING CASTER HEADTUBE ASSEMBLY (FIGURE 2)

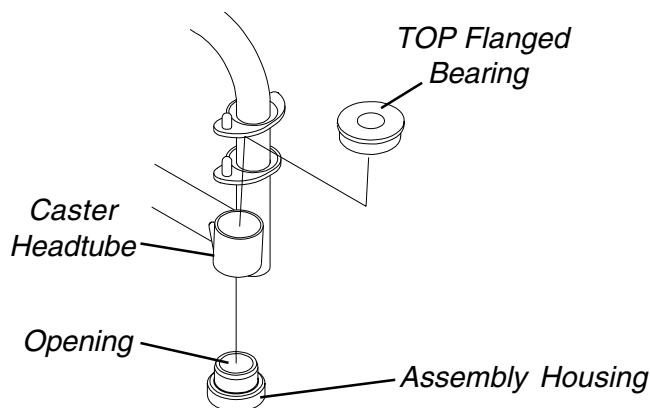
*NOTE: There are two (2) different bottom bearing assemblies. Refer to **FIGURE 2** to determine the proper bearing.*

1. Place a punch through the opening in the BOTTOM flanged bearing or assembly housing of the caster headtube and position it against the side of the TOP flanged bearing.
2. Using a rubber mallet, gently tap the punch while moving it from side-to-side until the TOP flanged bearing is free from the caster headtube. Discard the TOP flanged bearing.
3. Place a punch through the opening in the caster head tube and position it against the side of the BOTTOM flanged bearing or assembly housing.
4. Using a rubber mallet, gently tap the punch while moving it from side-to-side until the BOTTOM flanged bearing or assembly housing is free from the caster headtube.
5. Repeat **STEPS 1 through 4** for the opposite caster headtube bearings.
6. Assemble the tall fork/stem assembly. Refer to **ASSEMBLING THE TALL FORK/STEM ASSEMBLY** in this instruction sheet.

## WHEELCHAIRS BUILT BEFORE 10/97



## WHEELCHAIRS BUILT AFTER 10/97



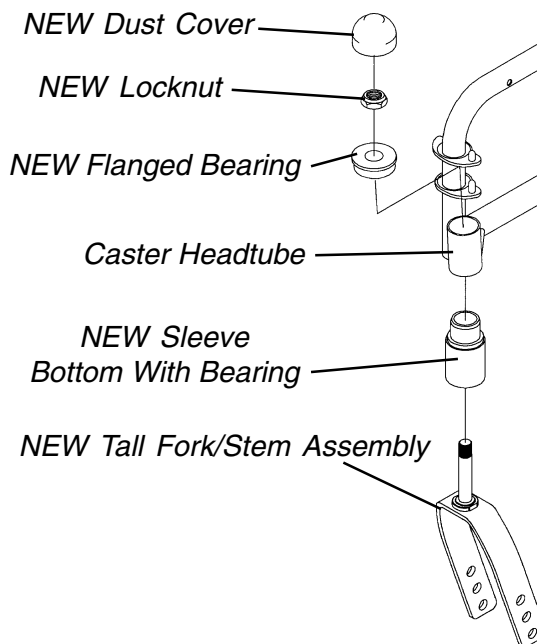
### FIGURE 2 - DISASSEMBLING THE EXISTING CASTER HEADTUBE ASSEMBLY ASSEMBLING THE TALL FORK/ STEM ASSEMBLY (FIGURE 3)

*NOTE: Refer to the **INSTALLATION WARNING** in the **SAFETY SUMMARY** section of this instruction sheet.*

1. Using a rubber mallet, gently tap the NEW flanged bearing into the TOP of the caster headtube.
2. Using a rubber mallet, gently tap the NEW sleeve bottom with bearing into the BOTTOM of caster headtube.
3. Insert the NEW tall fork/stem assembly through the bearings in the caster headtube.
4. Secure with the NEW locknut.
5. Repeat **STEPS 1-4** for the opposite fork/stem assembly.

*NOTE: DO NOT install the NEW dust covers at this time, as adjustments to the locknuts may be required later.*

6. Install the casters onto the NEW tall fork/stem assemblies. Refer to **REINSTALLING FRONT CASTERS** in this instruction sheet.



**FIGURE 3-REASSEMBLING THE TALL FORK/  
STEM ASSEMBLY**

### REINSTALLING FRONT CASTERS (FIGURE 4)

*NOTE: Refer to the **INSTALLATION WARNING** in the **SAFETY SUMMARY** section of this instruction sheet.*

#### WARNINGS

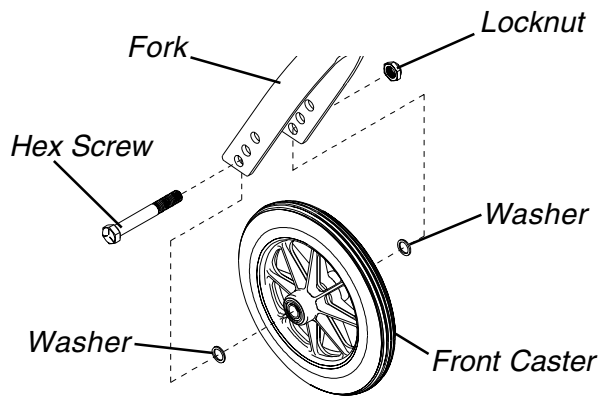
Replacement of front caster tire or tube **MUST** be performed by an authorized Invacare dealer or qualified technician.

Make sure both front casters are positioned in the same mounting hole **BEFORE** using the wheelchair - otherwise, injury or damage may occur.

#### CAUTION

As with any vehicle, the wheels and tires should be checked periodically for cracks and wear, and should be replaced.

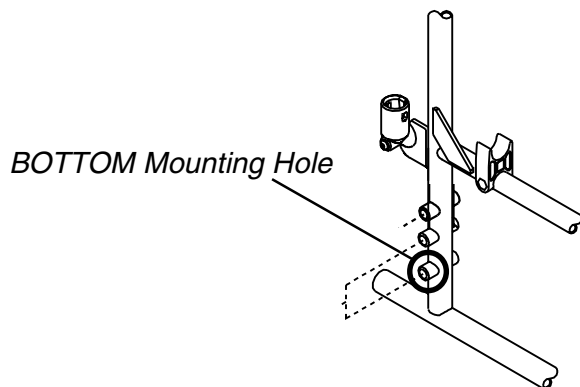
1. Position the front caster on the fork to the determined mounting hole. Refer to **CHANGING SEAT-TO-FLOOR HEIGHT** in 9000 Series Service Manual Part No. 1076155 to determine the proper front caster mounting holes for caster size and seat-to-floor height.
2. Install the existing washers, hex screw and locknut. Tighten securely.
3. Repeat **STEPS 1-2** for the opposite front caster.
4. Reposition the rear wheels. Refer to **REPOSITIONING THE REAR WHEELS** in this instruction sheet.



**FIGURE 4-REINSTALLING FRONT CASTERS**

## REPOSITIONING THE REAR WHEELS (FIGURE 5)

*NOTE: When the 9000 XDT Tall Fork/Stem is installed and a Tall Seat-to-Floor is desired, the rear wheel MUST be repositioned in the BOTTOM Mounting Hole to avoid excessive rear seat dump.*



**FIGURE 5 - REPOSITIONING THE REAR WHEELS**

1. Reposition rear wheels if necessary. Refer to **REAR WHEEL** in 9000 Series Owner's Manual Part No. 1056953 and **CHANGING SEAT-TO-FLOOR HEIGHT** in 9000 Series Service Manual Part No. 1076155.
2. After the rear wheel has been repositioned, perform **WHEELCHAIR MANEUVERABILITY**. Refer to **WHEELCHAIR MANEUVERABILITY** in this instruction sheet.

## WHEELCHAIR MANEUVERABILITY

1. Properly tighten the caster journal system and guard against flutter by performing the following check:
  - A. Tip the back of the wheelchair to the floor.
  - B. Pivot both the forks and casters to the top of their arc simultaneously.

- C. Let the casters drop to the bottom of the arc (the wheels should swing once to one-side, then immediately rest in a straight downward position).
  - D. Adjust the locknuts according to the freedom of the caster swing.
2. Test the wheelchair for maneuverability.
  3. Readjust the locknuts if necessary, and repeat **STEPS 1-2** until correct.
  4. Snap the dust covers over the locknut and stem.
  5. Install the wheel lock shoe extensions if necessary. Refer to **INSTALLING WHEEL LOCK SHOE EXTENSIONS** in this instruction sheet.

## INSTALLING WHEEL LOCK SHOE EXTENSIONS (FIGURE 6)

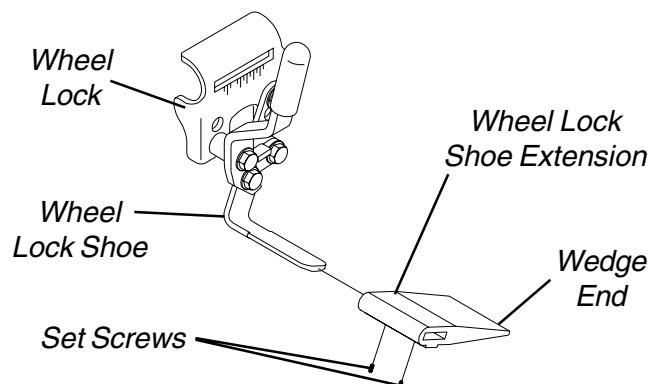
*NOTE: Refer to the **INSTALLATION WARNING** in the **SAFETY SUMMARY** section of this instruction sheet.*

*NOTE: The wheel lock shoe extensions are to ensure that the wheel lock engages properly and holds the wheelchair in place. They are needed for chairs with U2222 rear wheels in the tall configuration. If this chair already has wheel lock shoe extensions installed, do NOT replace. Refer to Parts Book Form No. 95-137 for proper wheel lock shoe extensions part numbers.*

1. Place the wheel lock in the unlocked position.
2. Loosen the two (2) set screws in the wheel lock shoe extension.
3. Position the wheel lock shoe extension over the existing wheel lock shoe.

*NOTE: Ensure the wedge end of the wheel lock shoe extension is facing the rear wheel.*

4. Securely tighten set screws.
5. Repeat **STEPS 1-4** for the opposite wheel lock.
6. Adjust the wheel locks. Refer to **ADJUSTING THE PATIENT OPERATED WHEEL LOCKS** in this instruction sheet.



**FIGURE 6 - INSTALLING WHEEL LOCK SHOE SPACERS**

## ADJUSTING THE PATIENT OPERATED WHEEL LOCK (FIGURE 7)

**NOTE:** Refer to the **INSTALLATION WARNING** in the **SAFETY SUMMARY** section of this instruction sheet.

**NOTE:** If wheels are pneumatic, before adjusting or replacing the wheel lock assemblies, ensure that the tires are inflated to the recommended p.s.i. The recommended tire pressure is located on the side wall of the tire.

1. Loosen the bolt and locknut that secure the wheel lock assembly to the wheelchair frame.
2. Adjust the position of wheel lock until the measurement between the rear wheel and the wheel lock shoe or shoe extension is between 5/32 and 5/16-inches.

**NOTE:** If a measurement between 5/32 and 5/16-inches cannot be achieved, remove the bolt and locknut that secure the wheel lock to the wheelchair and mount the wheel lock in one (1) of two (2) mounting positions.

3. Securely tighten the bolt and locknut.
4. Engage the wheel lock and push it against the wheelchair to determine if the wheel lock engages the wheel lock shoe enough to hold the wheelchair.
5. Repeat **STEPS 1-4** until the wheel lock holds the wheelchair.
6. Repeat **STEPS 1-5** for the opposite wheel lock.

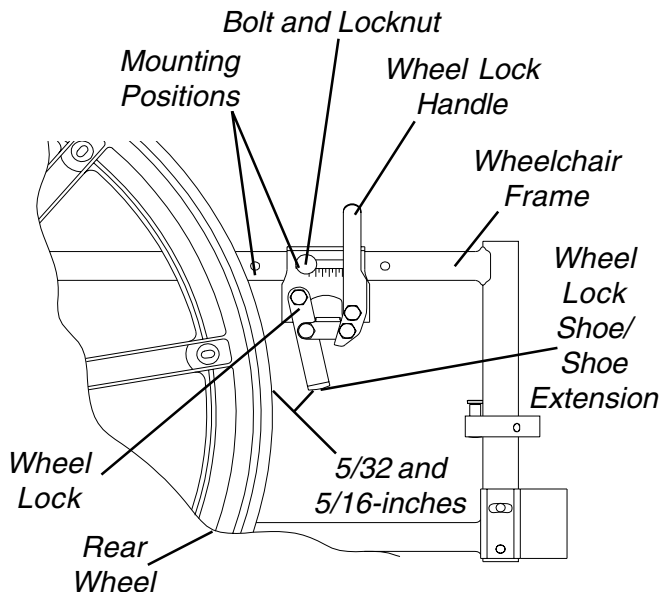


FIGURE 7 - ADJUSTING THE PATIENT OPERATED WHEEL LOCK



Yes, you can.™

Invacare Corporation

[www.invacare.com](http://www.invacare.com)

### USA

One Invacare Way  
Elyria, Ohio USA  
44036-2125  
800-333-6900

### Canada

5970 Chedworth Way  
Mississauga, Ontario  
L5R 3T9, Canada  
905-890-8838

Invacare and "Yes, you can" are trademarks of Invacare Corporation.

© 2000 Invacare Corporation

Form No. 97-196 Part No. 1075041 Rev A (1) 4/00