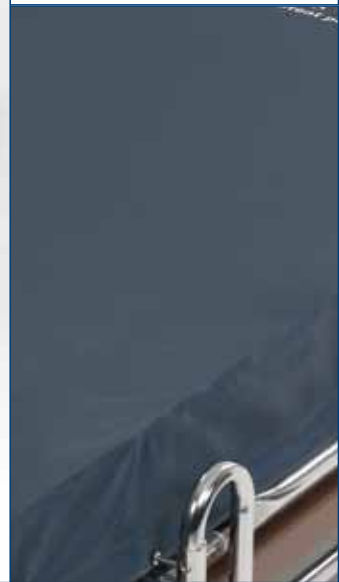
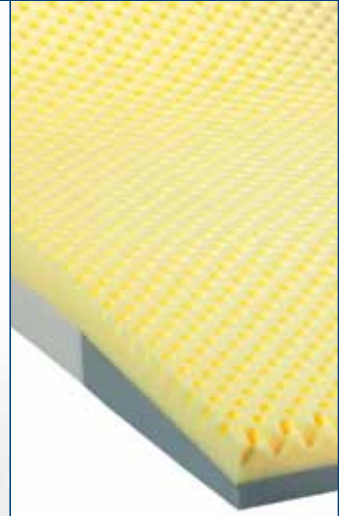


INVACARE®
SOLACE® RESOLUTION
THERAPEUTIC SUPPORT SURFACES



The **Invacare® Solace® Resolution Mattress** is designed for high risk patients for pressure redistribution. This advanced foam mattress is designed for those patients who require the highest degree of pressure relief. The dual layer design incorporates two different types of high density foam to help provide not only a therapeutic pressure relieving surface, but also one that is supportive and comfortable. In addition, the mattress has a heel slope to help alleviate pressure along with built-in side supports.

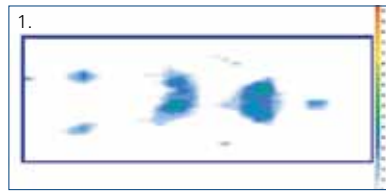
Invacare® Solace® Resolution 1080 Mattress

The Invacare Solace SRS1080 mattress features a heel slope to alleviate pressure off of the sensitive heel area. The mattress features convoluted fortress cut high density foam which offers more surface area for patient support and relief.

Features

- Heel slope
- Built-in side supports
- 70 Denier nylon top cover
- 11 oz. tri-laminate vinyl bottom
- Durable high density foam
- Compliant with federal fire regulations

HCPCS Code: E0184



1. Test shows subject in supine position demonstrating contact measurement between key pressure points using FSA pressure mapping technology. Subject: Female, 5'2", 105 lb.

Invacare Corporation
www.invacare.com

USA
One Invacare Way
Elyria, Ohio
44035-4190
(800) 333-6900

Canada
570 Matheson Blvd. E.,
Unit 8
Mississauga, Ontario
L4Z 4G4 Canada
(800) 668-5324

©2012
Invacare Corporation.
All rights reserved.
Trademarks are identified
by the symbols ™ and
®. All trademarks are
owned by or licensed
to Invacare Corporation
unless otherwise noted.
Specifications are subject
to change without
notification.
Form No. 10-136
Rev. 03/12
111227



Model #	Dimensions	Weight Capacity	Regulation Compliance	Limited Warranty
SRS1080	80" L 36" W 6" H	350 lb.	16 CFR 1632 16 CFR 1633	5 Years (Mattress) 1 Year (Cover)

All references to HCPCS codes: Providers are responsible for determining the appropriate billing codes when submitting claims to the Medicare program, and should consult an attorney or other advisor to discuss specific situations in further detail.

