



Yes, you can.®

# Solace™

## ***Therapeutic Foam Mattress***

For more information, contact your Invacare Territory Business Manager at 1-800-333-6900 or visit our website at [www.invacare.com](http://www.invacare.com)

# **microAIR®**

**BY INVACARE**

## ***Powered Replacement Systems***

For Invacare active mattress solutions in pressure ulcer prevention and treatment, please refer to the microAIR® product catalog. 07-62

**Invacare Corporation**  
[www.invacare.com](http://www.invacare.com)

### **USA**

One Invacare Way  
Elyria, Ohio  
44035-4190  
(800) 333-6900

### **Canada**

570 Matheson Blvd. E.  
Unit 8  
Mississauga, Ontario  
L4Z 4G4 Canada  
(800) 668-5324

©2007 Invacare Corporation. All rights reserved. Trademarks are identified by the symbols ™ and ®. All trademarks are owned by or licensed to Invacare Corporation unless otherwise noted. Egress EZ is a registered trademark licensed to Support Surface Technology. Specifications are subject to change without notification. All products featured are distributed by Invacare Corporation. Made and assembled in the USA.

Form No. 07-063

Rev. 11/07

All references to HCPCS codes:  
Providers are responsible for determining the appropriate billing codes when submitting claims to the Medicare program, and should consult an attorney or other advisor to discuss specific situations in further details.

Home Care  
HOMES  
TSS • Personal Care • Medical

# Therapeutic Support Surfaces



Yes, you can.®

**Therapeutic Foam Mattress**



**Solace™**

Invacare Innovation Focused on Pressure Ulcers

Within 1-2 hours after blood flow is cut off, a pressure ulcer can form. Once symptoms appear, all concerned in the healthcare process are affected. An already ill or immobilized patient is more uncomfortable, and the caregiver is more emotionally drained.

A complex pressure ulcer is costly at an estimated \$70,000 to heal. The cost estimate to treat all pressure ulcers adds up to over \$1.5 billion each year\* in the U.S. From a business standpoint, the reputation of the facility and the caregiver can be at risk. Apart from the financial cost, the emotional cost is high as well. Adding to their time and physical challenges, caregivers must be even more attentive to the patient in checking and treating the ulcer, and turning the patient.

Many factors contribute to the occurrence of nosocomial pressure ulcers (pressure ulcers acquired in the home, hospital or facility). Invacare offers a complete line of static and dynamic therapeutic mattresses designed to help control some of the external factors that result in optimum pressure management.

\*The National Pressure Ulcer Prevalence Survey: A benchmarking approach, 1999.



Invacare has a complete line of easy to understand and use Solace™ and microAIR® therapeutic surfaces. The innovative designs help in prevention and treatment of pressure ulcers.

Invacare® Therapeutic Support Surfaces

Understanding Pressure Ulcers

What are pressure ulcers?

Pressure ulcers, sometimes called bed sores or decubitus (lying in bed) ulcers, are typically located in the areas where the body has less protective covering on weight bearing points. Those areas are typically heels, elbows, shoulders, and the sacral regions in the supine, semi-recumbent, and seated positions. Ankles, knees, hips and ears are additional areas of concern in the lateral position. (See Fig. A) When the blood pressure is stopped or low (above 32mm/Hg) into the dermis, capillaries begin to close. (See Fig. B) Without the nutrients in the blood, and the removal of waste products, the area begins to break down. The first sign is redness and warmth to the touch. In severe stages, extensive tissue destruction can lead to tissue necrosis (death), and damage to supporting muscle and bone.

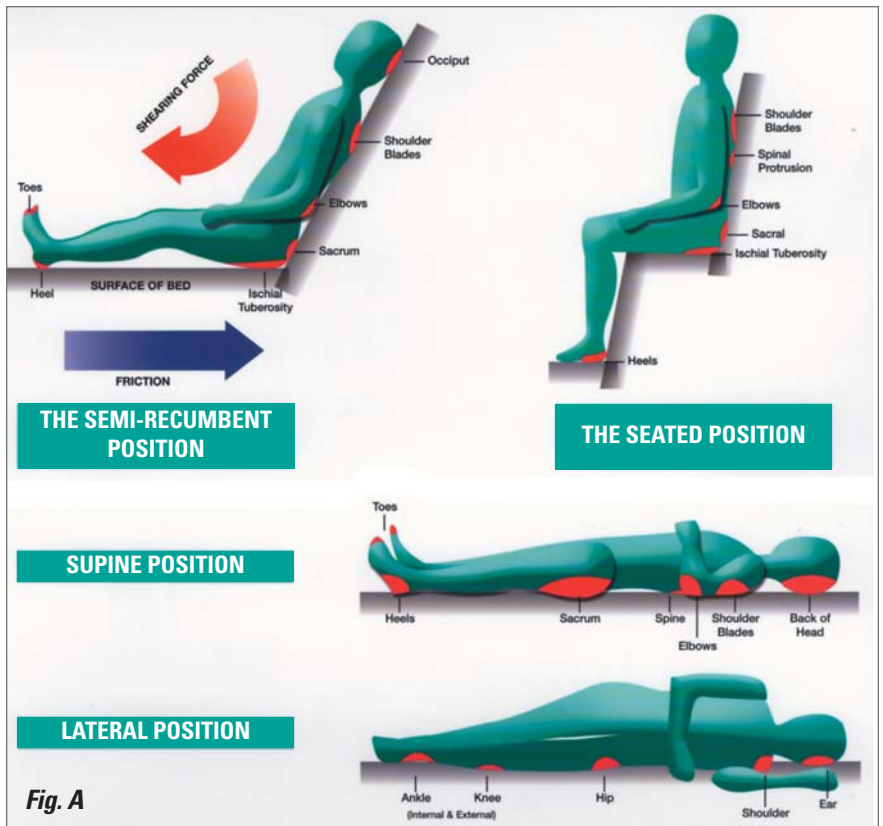


Fig. A

### When is a patient at risk?

Patient risk is assessed on a number of factors standardized in assessments such as the Norton or Braden scales. It is recommended that patients be assessed as soon as possible upon entering into care. *This information is not medical advice. Each individual should always consult with his/her physician to determine proper product selection.*

### What are the risk factors?

- 1. Patient is immobile or inactive.** The lack of movement results in loss of blood flow to the skin.
- 2. Body size and shape.** Very thin or very obese patients are at a higher risk. Very thin people lack cushioning between the skin and bony prominences such as heels and elbows. The overweight have fewer blood vessels to the skin and require body movement to get the blood flow to the susceptible areas.
- 3. Skin condition and hygiene regimens.** Thinning skin which naturally occurs with age, as well as some medications, may make the patient more susceptible.
- 4. Nutrition.** A balanced diet and proper calorie consumption is important in maintaining skin thickness and elasticity.
- 5. Incontinence and infection.** Urine and fecal matter or increases in body temperature and subsequent perspiration can cause maceration (the skin to soften). The skin is therefore more susceptible to tearing.
- 6. Circulation.** Edema or swelling due to poor blood circulation makes the susceptible areas less resistant to pressure.

### How do pressure ulcers form?

Any individual or combination of the above factors combined with environmental skin stress factors can result in a pressure ulcer. If the outer layer of skin (epidermis) is rubbed away the more vulnerable dermis layer is exposed to bacteria and infection.

- 1. Pressure.** When the capillary blood pressure is cut off from the skin by pressure on the area for an extended time.
- 2. Moisture.** Over-hydrated (macerated) skin is at higher risk of tearing or breaking down from moving or friction.
- 3. Shear.** Capillaries stretch and tear reducing the blood flow when the skin remains stationary against the bed linens as the surface moves.
- 4. Friction.** When the skin is pulled across a coarse surface and the outer protective layer (epidermis) is rubbed away.

**MEDICARE CRITERIA\***

Support surfaces may be static (non-powered, reactive) or dynamic (moveable, active). A static surface is recommended if a patient can assume varying positions without bearing weight on a pressure ulcer. Dynamic surfaces are required if the patient cannot change positions without bearing weight on the pressure ulcer OR if the patient fully compresses the static support surface.

**Group I Treatment**

Group I surfaces may be covered if the patient meets the following criteria:

- 1. Completely immobile (patient cannot move around without assistance).**

OR

- 2. Limited mobility (patient cannot make changes in body positions significant enough to alleviate pressure) PLUS Number 4-7.**

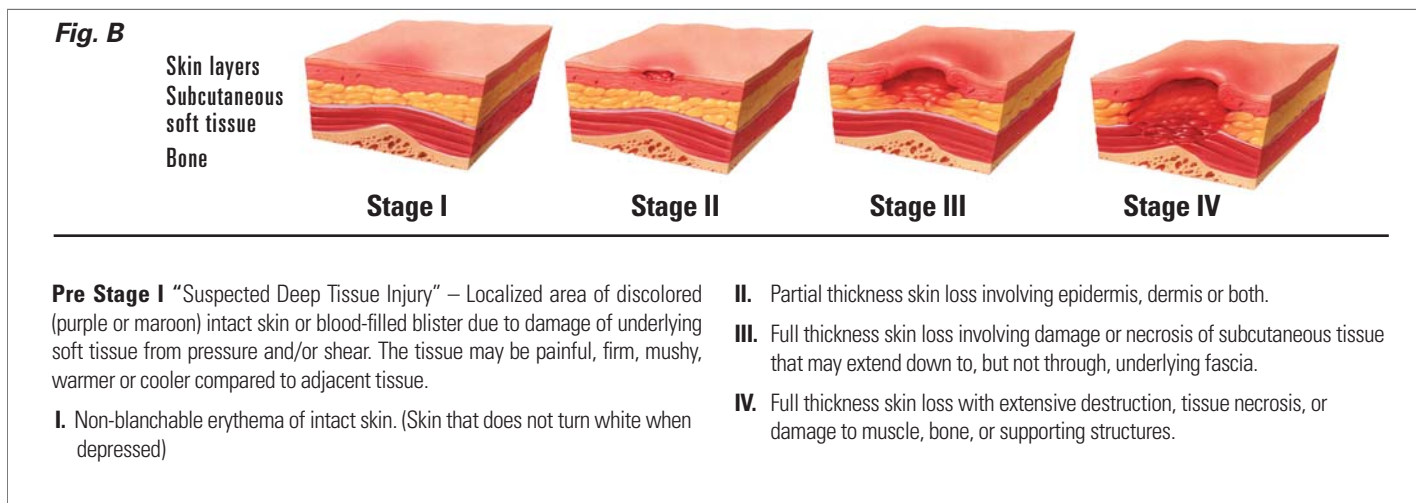
OR

- 3. Any stage pressure ulcer on the trunk or pelvis PLUS Numbers 4-7**

OR

- 4. Impaired nutritional status.**
- 5. Fecal or urinary incontinence.**
- 6. Altered sensory perception.**
- 7. Compromised circulatory status.**

\* Medicare Criteria: This information is not intended to be, nor should it be considered, billing or legal advice. Providers are responsible for determining the appropriate billing codes when submitting claims to the Medicare program, and should consult an attorney or other advisor to discuss specific situations in further detail.



## Solace™

### Therapeutic Foam Mattresses



**Solace** (säl' əs) mattresses are unique dual- and tri-layered foam formulations. They are designed to prevent and relieve pressure ulcers by distributing weight as uniformly as possible, and allowing blood to flow through the capillaries in areas prone to lesion development.\*

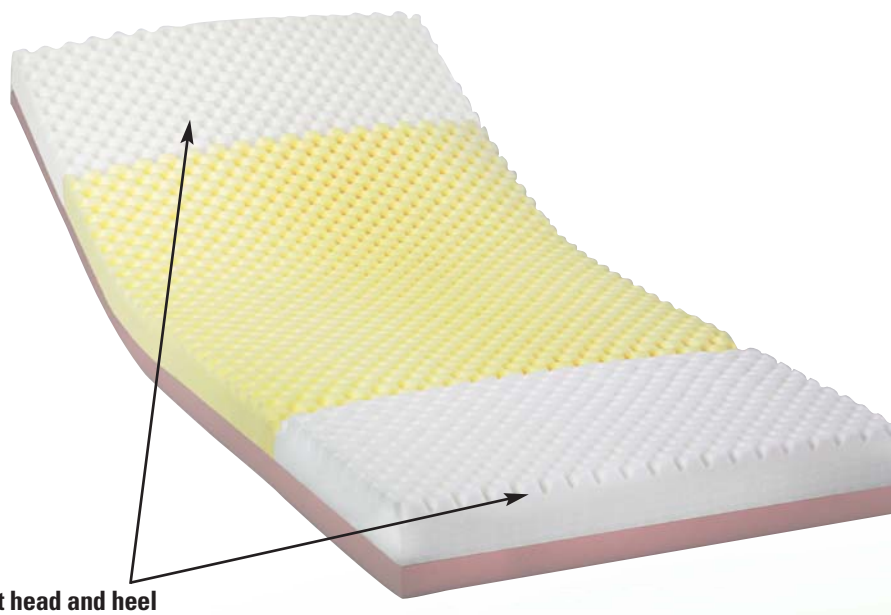
The Prevention™, Therapy™, and Resolution™ mattress systems offer good, better and best solutions in static support surfaces. Within each category, the products also reflect increasing treatment efficacy.

The unique and patented designs combine comfort and technology for patient and caregiver confidence. The mattresses are available in standard 80" lengths with the ability to special order 76" and 84" lengths.

\* Many support surfaces have been shown to improve pressure ulcers, however there is no compelling evidence that one performs better than all others in all circumstances. It is best to consider the therapeutic benefits of the products when determining which to use.

## Solace™ Prevention Series for low risk patients

Cost effective, dual-layer design lowers interface pressure for the low risk patient



### Solace™ Prevention 1000 – the good mattress choice for low risk patients

Model no. SPS1000

Zoned top layer relieves pressure in the important susceptible body zones. The convoluted “fortress” cut design offers more surface area for patient support and relief. Two layers of high quality foam include softer head and heel sections.

### Solace™ Prevention 2000 – the better mattress choice

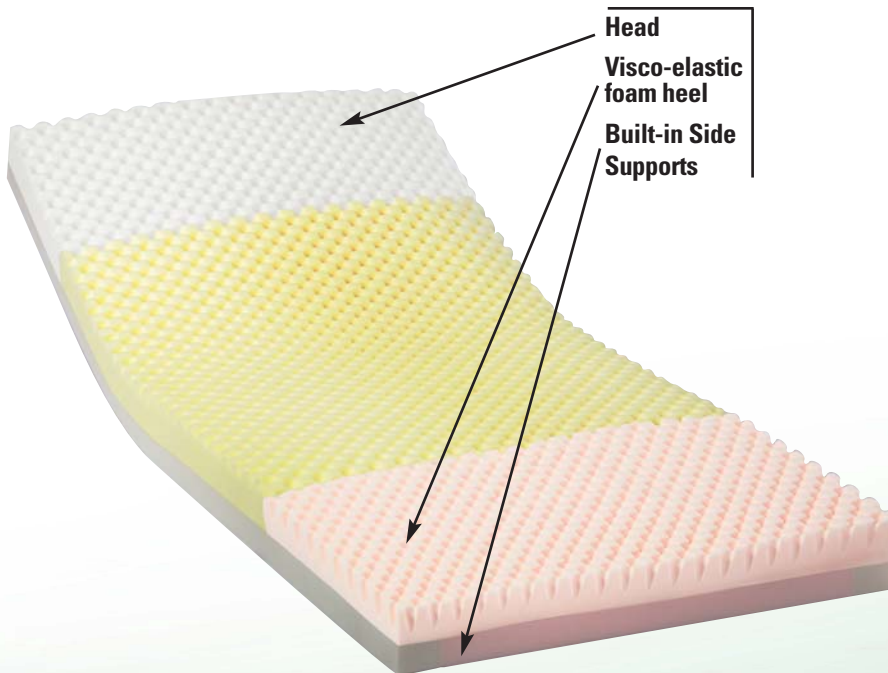
Model no. SPS2000

Added to the design are built-in side supports. The head and heel-soft sections add comfort and protection, while the side-supports provide stability and durability.



**Solace™**  
Prevention Series  
for low risk patients

- SPS1000
- SPS2000
- SPS3000



**Solace™ Prevention 3000 – the best solution for low risk patients**

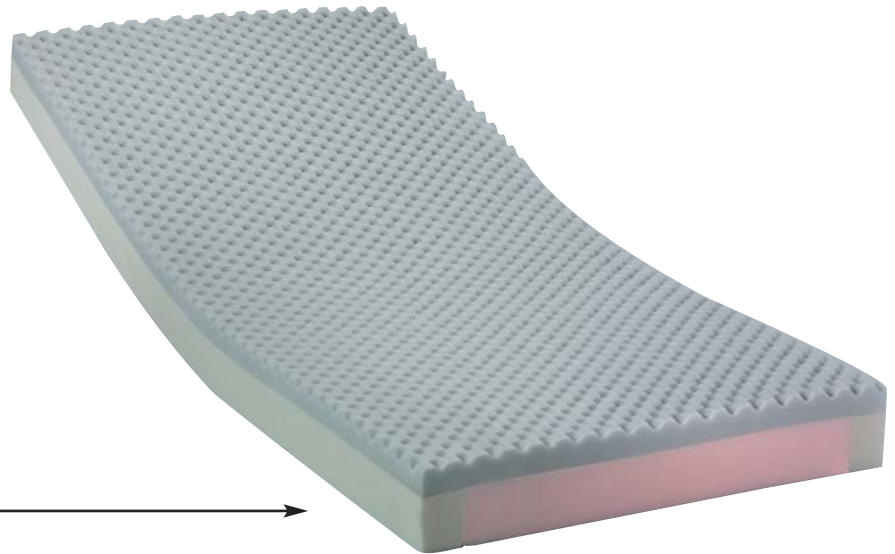
Model no. SPS3000

Added to the basic mattress is a specially designed heel section to cradle the sensitive area with visco foam. This product provides comfort and support with built-in side supports and dual layer, "fortress" cut foam.

**Solace™**  
Therapy Series  
For Medium to High Risk Patients

- STS1000
- STS2000
- STS3000

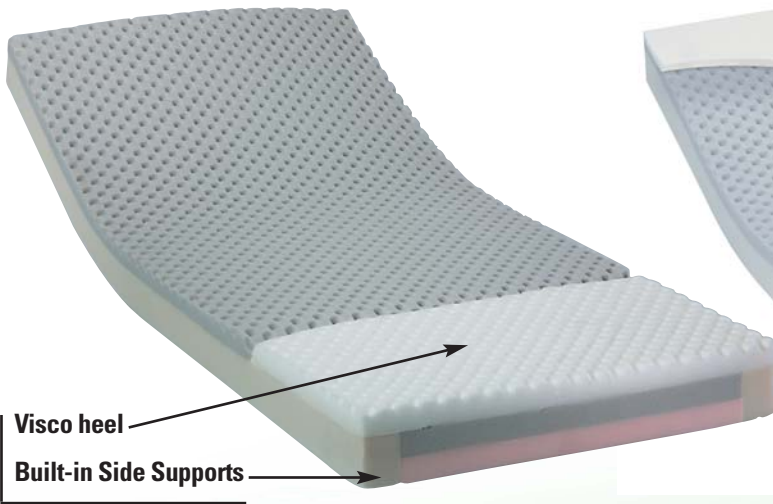
Tri-layer  
Fortress cut  
Built-in Side Supports



**Solace™ Therapy 1000 – the good mattress choice for medium to high risk patient**

Model no. STS1000

Precision three layered, mattress of die-cut foams provides pressure relief around bones, increases air flow to reduce surrounding temperature, and provides uniform weight distribution for increased patient comfort.



**Solace™ Therapy 2000 – the better mattress choice for medium to high risk patients**

Model no. STS2000

Added to the design are built-in side supports and a heel-Visco section to add comfort and protection.

**Solace™ Therapy 3000 – the best mattress solution for medium to high risk patients**

Model no. STS3000

Building more into the therapy mattress is a specially designed visco top to cradle the entire body in foam. This series provides comfort and support and includes the side supports and three layers of "fortress" cut style foam.



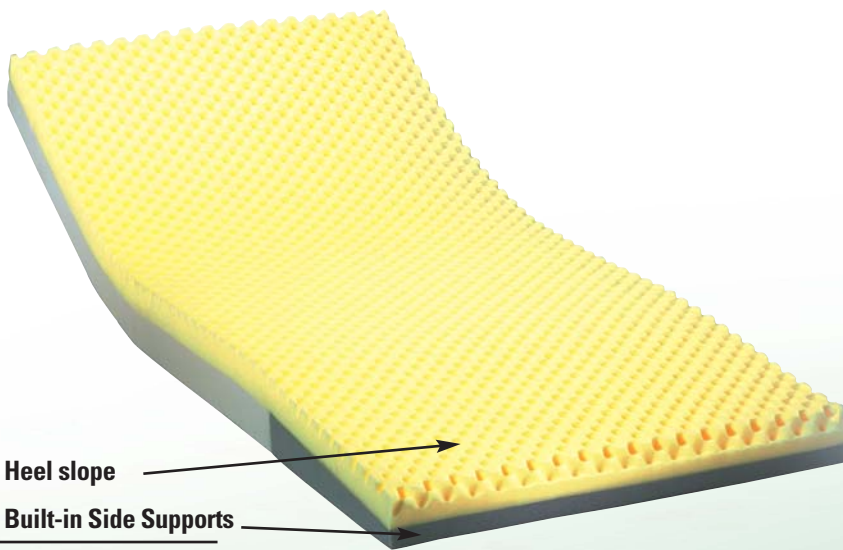
### Solace™ Resolution Series For Pressure Ulcer Treatment

The Resolution series is the best Invacare® foam mattress solution for pressure redistribution.

**SRS1000**

**SRS2000**

**SRS3000**



Heel slope

Built-in Side Supports

#### Solace™ Resolution 1000 Series – the best mattress solution for high risk patients

Model no. SRS1000

Two layers of highest protection foam with a heel slope to alleviate pressure. The convoluted “fortress” cut design offers more surface area for patient support and relief.

### Unique Shear Protection

Resolution 2000 and 3000 both have a unique, patented slip layer that provides shear protection for patients when beds are articulated. The mattress remains stable beneath the patient as the second foam layer easily slides with the bed. Built-in side supports provide added stability.



#### Solace™ Resolution 2000 and 3000 shear protection

Model no. SRS2000, SRS3000

Solace™ and Egress EZ® Specialty Mattresses

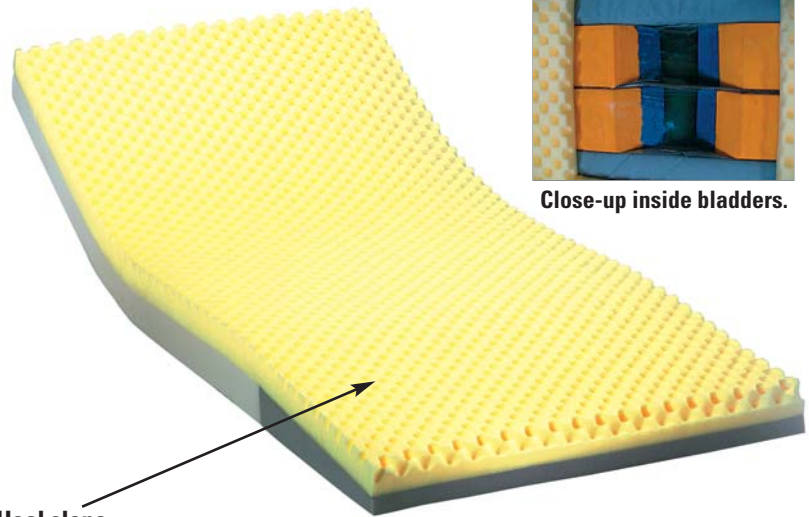


Egress EZ® Mattress

Model no. MATTEZCA, MATTEZLTCA

The Egress EZ mattresses are unique designs that give patients added support and independence when getting in or out of bed. The dual-layer and tri-layer foam have an exclusive built-in frame and 3" raised bolsters with cut-through handles that provide a place for patients to get leverage when standing. The egress area is 20" wide. Egress EZ products include the added relief of a heel soft area. Higher density three layer foam available in the MATTEZLTCA version.

Invacare is dedicated to earning your trust. We know one product won't fit every need, and that's why we continue to create and add new products and technologies. Count on Invacare to be your sole source for all Therapeutic Surfaces.



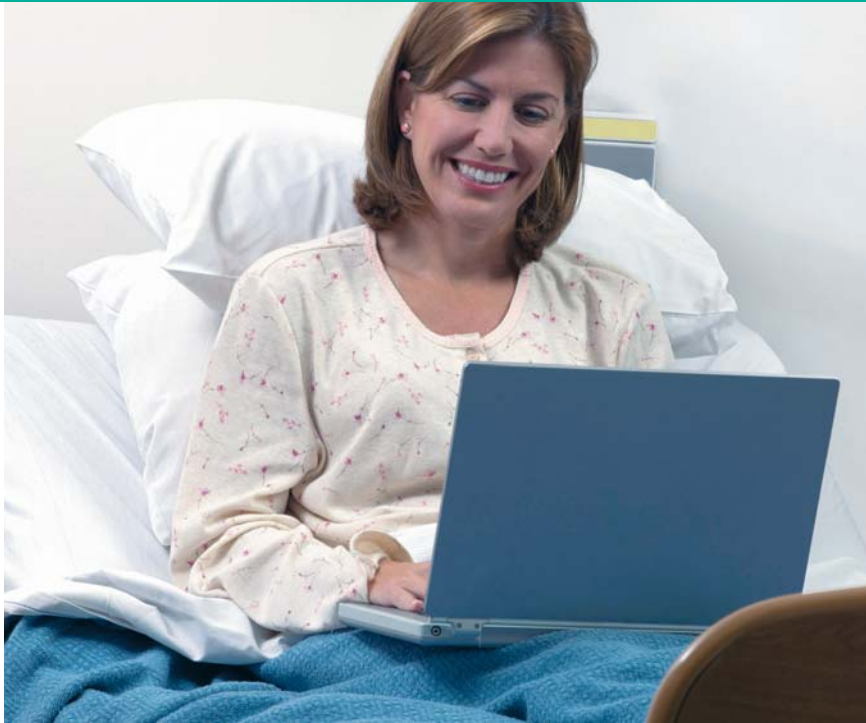
Heel slope

Close-up inside bladders.

Solace™ Crossover Convertible Alternating Pressure Mattress

Model no. EQ1536

A closed system of air in this mattress provides static and alternating pressure with a twist of a switch. With the push of a button, the pressure is adjusted to patient needs for envelopment and comfort. A 10 LPM power unit provides the alternating pressure treatment. In the event of a power failure, the closed manifold system prevents air from being expelled and assures continuing patient comfort. Mattress can be used effectively with or without power.



## Overlays

Simple to use and easy to maintain, these products include an alternative pressure pad system, gel overlay and a foam mattress replacement.



### **Invacare® Gel Overlay Mattress**

Model no. IVCGM02

Standard gel overlays often suffer from the same problem – gel migration, the process of squeezing the gel out from under pressure points thereby reducing the effectiveness of the overlay. Invacare’s new gel overlay addresses this concern through a specially-designed set of bladders that runs across the surface and minimizes the migration of the gel. Each cell works independently to provide support and minimize pressure points. Encased in a highly resilient foam base, the comfort of this gel overlay is unsurpassed.



### **Invacare® CareGuard™ Alternating Pressure Pad System**

Model no. CG9701

Invacare CareGuard APP system has mattress flaps to secure the product. The advanced technology pump inflates and deflates the air cells for patient relief. Variable pressure settings provide patient comfort.

# Group I Therapeutic Support Surfaces

|                                  | Gel Overlay  | Alternating Pressure                       | Non-Powered  |   |   |                               | Non-Powered and Power Self Adjustable Alternating Pressure                   | Alternating Pressure                             |
|----------------------------------|--|--|--|---|---|-------------------------------|--|--|
| Model Name                       | Invacare® Gel Foam Mattress Overlay  | CareGuard™ Alternating Pressure Pad System | Invacare® Egress EZ™ Mattress  | Solace™ Prevention Dual Layer Foam Mattresses | Solace™ Therapy Tri-Layer Foam Mattresses | Solace™ Resolution Mattresses | Solace™ Crossover  | microAIR® 50 - 5" Overlay                        |
| Model Number                     | IVCGFM02   | CG9701                                     | MATTEZCA, MATTEZLTCA   | SPS10XX<br>SPS20XX<br>SPS30XX                 | STS10XX<br>STS20XX<br>STS30XX             | SRS10XX<br>SRS2000<br>SRS3000 | EQ1536<br>(includes power unit)  | MA50   |
| HCPCS Code                       | E0185  | E0181                                      | E0184  | E0184   | E0184                                     | E0184                         | E0277  | E0277  |
| Patient Risk Level               | Low  | Low  | Medium-High  | Low   | Med-High                                  | High-Risk & Therapy           | Therapy  | Therapy  |
| Reimbursement Range*             | \$38.20 - \$44.94  | \$18.47 - \$21.73                          | \$24.57 /mo  | \$\$24.57 /mo                                 | \$24.57 /mo                               | \$24.57 /mo                   | \$645.46 - \$759.39  | \$645.46 - \$759.37                              |
| <b>Type of Therapy</b>           |  |  |  |   |   |                               |  |  |
| General Pressure Reduction       | ■  | ■  | ■  | ■   | ■   | ■                             | ■  |  |
| Alternating Pressure             |  | ■  |  |   |   |                               | Alternating Pressure on Demand   |  |
| Air Loss                         |  |  |  |   |   |                               |  |  |
| Lateral Rotation                 |  |  |  |   |   |                               |  |  |
| <b>Features</b>                  |  |  |  |   |   |                               |  |  |
| Alarm Silence                    |  |  |  |   |   |                               | ■  | ■  |
| Blower                           |  |  |  |   |   |                               |  |  |
| Built-in Side Supports           | ■  |  | 3" Hard side supports with hand holds  | SPS20XX<br>SPS30XX                            | ■   | ■                             | ■  |  |
| Comfort Settings                 |  | ■  |  |   |   |                               |  | ■  |
| State of the Art Compressor      |  |  |  |   |   |                               | 10 LPM   | 10 LPM   |
| Cover                            | 70 Denier nylon top 9 oz. Tri-laminate vinyl bottom water-proof, vapor permeable | Latex free vinyl                           | 70 Denier nylon top 11 oz. tri-laminate vinyl bottom waterproof, vapor permeable |   |   |                               | 70 Denier 4-way stretch top with super non-skid base and sewn in side straps | 70 Denier quilted nylon 1000 Denier nylon bottom |
| Quick CPR Release                | ■  | ■  |  |   |   |                               | ■  | ■  |
| Fortress Cut Convolute Foam      |  |  | ■  | ■   | ■   | ■                             | ■  |  |
| Fowler Indicator                 |  |  |  |   |   |                               |  | ■  |
| Mattress Construction            | Gel  | Pads                                       | Foam   | Foam  | Foam                                      | Foam                          | Foam and air bladders  | 16 - 5" Bladders                                 |
| Mattress Dimensions              | 34" x 77" x 3.5"   | 34" x 118" x 2.5"                          | 36" x 80" x 6"   | 36" x 80" x 6"                                | 36" x 80" x 6"                            | 36" x 80" x 6"                | 36" x 80" x 6"   | 36" x 80" x 5"                                   |
| Power Failure/Low Pressure Alarm |  |  |  |   |   |                               | ■  | ■  |
| Quick Connect Coupler            |  |  |  |   |   |                               |  | ■  |
| Safety Mat 2" Foam               |  |  |  |   |   |                               |  |  |
| Therapy Time Settings (min)      |  | Adjustable                                 |  |   |   |                               | 10   | 5, 10, 15, 20                                    |
| Weight Capacity                  | 250 lb.  | 250 lb.                                    | 350 lb.  | 350 lb.                                       | 350 lb.                                   | 350 lb.                       | 650 lb.  | 350 lb.  |
| Wireless Fowler                  |  |  |  |   |   |                               |  |  |
| Z Cell                           |  |  |  |   |   |                               |  |  |
| <b>CFR Fire Safety Testing</b>   |  |  |  |   |   |                               |  |  |
| 16 CFR 1632, 16 CFR 1633         | ■  | Not required                               | ■  | ■   | ■   | ■                             | ■  | Not required                                     |
| <b>Limited Warranty</b>          |  |  |  |   |   |                               |  |  |
| Mattress                         | 6 months   | 30 days                                    | 5 year<br>7 year   | 5 year  | 5 year                                    | 5 year                        | 5 year   | 2 year   |
| Power Unit                       |  | 1 year                                     |  |   |   |                               | 1 year   | 1 year   |
| Cover                            |  |  | 1 year   | 1 year  | 1 year                                    | 1 year                        | 1 year   | 1 year   |

All references to HCPCS codes: Providers are responsible for determining the appropriate billing codes when submitting claims to the Medicare program and should consult an attorney or other advisor to discuss specific situations in further details.

# Group II Therapeutic Support Surfaces

| Alternating Pressure                                |   | Alternating Pressure<br>Low Air Loss                |   |   | Low Air Loss                           |   | Lateral Rotation with<br>Alternating Pressure and Low Air Loss |  |  |
|---|---|---|---|---|--|---|--|--|--|
| microAIR® 51<br>Mattress                            | microAIR® 60<br>10" AP Mattress                           | microAIR® 55<br>AP/LAL                              | microAIR® 65<br>AP/LAL                                    | microAIR® 85<br>True Low Air Loss<br>AP                   | microAIR® 3500S™                       | microAIR® 80  | microAIR® 90Z<br>Turn/LAL                                      | microAIR® 95Z<br>Turn/LAL                | microAIR®<br>Turn-Q™ Plus                                      |
| MA51  | MA60  | MA55  | MA65  | MA85  | BB9572000                              | MA80  | MA90Z  | MA95Z                                    | BB9612000  |
| E0277   | E0277   | E0277   | E0277   | E0277   | E0277                                  | E0277   | E0277  | E0277                                    | E0277  |
| Therapy   | Therapy   | Therapy   | Therapy   | Therapy   | Therapy                                | Therapy   | Therapy  | Therapy                                  | Therapy  |
| \$645.46 - \$759.39                                 | \$645.46 - \$759.39                                       | \$645.46 - \$759.39                                 | \$645.46 - \$759.39                                       | \$645.46 - \$759.39                                       | \$645.46 - \$759.39                    | \$645.46 - \$759.39                                       | \$645.46 - \$759.39  | \$645.46 - \$759.39                      | \$645.46 - \$759.39  |
| Type of Therapy                                     |   |   |   |   |  |   |  |  |  |
|   |   |   |   |   |  |   |  |  |  |
| ■   | ■   | ■   | ■   | ■   |  |   | ■  | ■  |  |
|   |   | On-demand   | On-demand   | True  | True                                   | True  | On-demand  | ■  | ■  |
|   |   |   |   |   |  |   | 30 degree Z cell   | 45 degree Z cell                         | 40 degree<br>Lateral Rotation                                  |
| Features  |   |   |   |   |  |   |  |  |  |
| ■   | ■   | ■   | ■   | ■   | ■                                      | ■   | ■  | ■  | ■  |
|   |   |   |   | 1275 LPM  | 1000 LPM                               | 1275 LPM  |  | 1275 LPM                                 | 1000 LPM   |
|   |   |   |   |   |  |   | 15" Side bolsters  | 12" Side bolsters                        |  |
| ■   | ■   | ■   | ■   | ■   | ■                                      | ■   | ■  | ■  | ■  |
| 10 LPM  | 50 LPM  | 10 LPM  | 50 LPM  |   |  |   | 50 LPM   |  |  |
| 70 Denier quilted nylon<br>1000 Denier nylon bottom | Dual quilted slip layer cover<br>1000 Denier nylon bottom | 70 Denier quilted nylon<br>1000 Denier nylon bottom | Dual quilted slip layer cover<br>1000 Denier nylon bottom | Dual quilted slip layer cover<br>1000 Denier nylon bottom | 70 Denier nylon, polyester under layer | Dual quilted slip layer cover<br>1000 Denier nylon bottom | Dual quilted slip layer cover<br>1000 Denier nylon bottom      | Urethane 4-way stretch quilted top cover | Breathable while prohibiting moisture and microbe transmission |
| ■   | ■   | ■   | ■   | ■   | ■                                      | ■   | ■  | ■  | ■  |
| ■   | ■   | ■   | ■   | ■   | ■                                      | ■   |  |  | ■  |
| 16 - 6" Bladders                                    | 20 - 8" Bladders  | 16 - 6" Bladders                                    | 20 - 8" Bladders  | 20 - 8" Bladders  | 3 - 9" Bladders                        | 20 - 8" Bladders  | 24 - 8" Bladders   | 24 - 8" Bladders                         | 8 Air tubes  |
| 36" x 80" x 8"                                      | 36" x 80" x 8"  | 36" x 80" x 8"                                      | 36" x 80" x 8"  | 36" x 80" x 10"   | 37" x 84" x 8.5"                       | 36" x 80" x 10"   | 36" x 80" x 15"  | 36" x 80" x 15"                          | 37" x 84" x 8"   |
| ■   | ■   | ■   | ■   | ■   | ■                                      | ■   | ■  | ■  | ■  |
| ■   | ■   | ■   | ■   | ■   | ■                                      | ■   | ■  | ■  | ■  |
| ■   | ■   | ■   | ■   | ■   | ■                                      | ■   | ■  | ■  | ■  |
| 5, 10, 15, 20                                       | 5, 10, 15, 20   | 5, 10, 15, 20                                       | 5, 10, 15, 20   |   |  |   | 10, 20, 30, 60   | Custom                                   |  |
| 250 lb.   | 1000 lb.  | 250 lb.   | 1000 lb.  | 1000 lb.  | 600 lb.                                | 1000 lb.  | 1000 lb.   | 1000 lb.                                 | 600 lb.  |
|   | ■   |   | ■   | ■   |  | ■   | ■  | ■  |  |
|   |   |   |   |   |  |   | ■  | ■  |  |
| CFR Fire Safety Testing                             |   |   |   |   |  |   |  |  |  |
| ■   | ■   | ■   | ■   | ■   | ■                                      | ■   | ■  | ■  | Not required   |
| Limited Warranty                                    |   |   |   |   |  |   |  |  |  |
| 1 year  | 1 year  | 1 year  | 1 year  | 1 year  | 1 year                                 | 1 year  | 1 year   | 1 year                                   | 6 months   |
| 2 year  | 2 year  | 2 year  | 2 year  | 2 year  | 2 year                                 | 2 year  | 2 year   | 2 year                                   | 2 year   |
| 1 year  | 1 year  | 1 year  | 1 year  | 1 year  | 1 year                                 | 1 year  | 1 year   | 1 year                                   | 1 year   |