

INVACARE®
UNI-RECLINERS
COMFORT SOLUTIONS



Invacare's line of **Uni-Recliners** delivers outstanding value, durability and comfort in health care chairs and recliners. The Deluxe Invacare Mobile Recumbent Chairs (MRC) provide essential ergonomic support and comfort in a recliner. The Invacare Mobile Treatment Chair (MTC) is especially suited for clinical needs. Regardless of your need, Invacare's extensive line of recliners are ideal for a range of long-term care and clinical seating applications. They're rugged, easy to clean and perform a variety of functions safely and effectively, making them an outstanding choice for you and your patients.

Traditional Three-Position Recliner

Model # IH6074A

The IH6074A three-position recliner offers exceptional comfort and durability for day room or patient room environments. The full recline, leg-ottoman elevated and full upright positions provide maximum flexibility for patients. A convenient push bar on the chair back and four rolling casters allow for easy movement. The two rear steering casters may be locked to secure the chair in place.

Features

Footrests fold completely under chair, allowing the patient to rise to a standing position more easily
Blow-molded side panels remove quickly, with press pins, for easy cleaning
Convenient overlap tray included. Tabs allow tray to move freely
Articulating headrest joins patient to social field of vision
Flame retardant upholstery – meets California Technical Bulletin 117 standard



1. Full recline position



Clinical Recliner

Model # IH6077A

The IH6077A clinical recliners are an ideal choice for use in dialysis, blood collection, same-day surgery, EKG, oncology, chemotherapy and respiratory care areas. The non-locking reclining mechanism and soft padding allow the patient to sit comfortably for prolonged periods of time in a full upright, leg-elevated or full recline position. The gas spring cylinders allow for Trendelenberg position. The high-strength vinyl upholstery is easy to clean and impervious to fluids. Maneuverability is achieved through four swivel casters, and the rear casters lock in place to secure the chair.

Features

Two convenient side tables for holding prep materials
Footrests fold completely under chair, allowing the patient to rise to a standing position more easily
Blow-molded side panels remove quickly, with press pins, for easy cleaning
Gas cylinder for instant Trendelenberg positioning for shock patients
Articulating headrest joins patient to social field of vision
Flame retardant upholstery – meets California Technical Bulletin 117 standard



1. Full recline position



Deluxe Three-Position Recliner

Model # IH6065 (A, WD)

The IH6065 series deluxe three-position recliners are loaded with features and designed with patient ergonomics in mind. Special padding technology provides a long life of comfort and support for the seating surface. The back of the recliner features lumbar support for maximum comfort. Patients will appreciate the articulating headrest that comfortably supports the neck and head. The full-recline, leg-ottoman elevated and full upright positions provide

maximum comfort for patients. A convenient push bar on the chair back and four rolling casters allow for easy movement. Available in two sizes (adult, wide), providing a variety to fit every patient. The rear locking casters and front swivel casters make this recliner easy to move and position. The two rear steering casters may be locked to secure chair in place. An overlap tray stores on the side and folds out of the way (adult model only).

Features

Footrests fold completely under chair, allowing the patient to rise to a standing position more easily

Blow-molded side panels remove quickly, with press pins, for easy cleaning

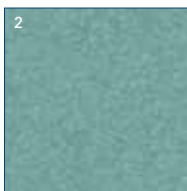
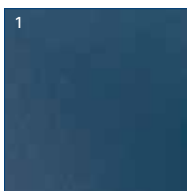
Convenient overlap tray included (adult model only). Tabs allow tray to travel freely or lock in position

Articulating headrest joins patient to social field of vision

Flame retardant upholstery – meets California Technical Bulletin 117 standard



1. Articulating headrest
2. Full recline position



1. #61 Blueridge
 2. #68 Jade
 3. #60 Rosewood
-

Invacare Corporation

www.invacare.com

USA

One Invacare Way
Elyria, Ohio
44035-4190
(800) 333-6900

Canada

570 Matheson Blvd. E.,
Unit 8
Mississauga, Ontario
L4Z 4G4 Canada
(800) 668-5324

©2012

Invacare Corporation.
All rights reserved.
Trademarks are identified
by the symbols ™ and
©. All trademarks are
owned by or licensed
to Invacare Corporation
unless otherwise noted.
Specifications are subject
to change without
notification.
Form No. 04-038
Rev. 03/12
111288



Model #	Dimensions HxWxD	Seat Dimensions WxD	Seat-to-Floor Height	Seat-to-Back Height	Tray Dimensions WxL	Weight	Weight Capacity
IH6074A	47"x24.25"x40"	19"x19.5"	21.5"	32"	25.5"x15"	250 lb.	73 lb.
IH6065A	46"x27.5"x41"	18.75"x19.75"	21"	32"	25.5"x15"	250 lb.	86 lb.
IH6065WD	46"x27.5"x41"	22.75"x19.75"	21"	32"	N/A	400 lb.	86 lb.
IH6077A	49"x30.75"x38"	31"x19.5"	22"	32"	10"x19"	250 lb.	89 lb.



	Shipping Weight	Carton Dimensions LxWxH	Limited Warranty
IH6075A	86 lb.	40"x32"x29"	3 Years Chair 1 Year Upholstery
IH6065A	105 lb.	37"x29"x29"	3 Years Chair 1 Year Upholstery
IH6065WD	105 lb.	37"x29"x29"	3 Years Chair 1 Year Upholstery
IH6077A	105 lb.	40"x32"x29"	3 Years Chair 1 Year Upholstery 1 Year Gas Cylinder